

BRITISH RAILWAYS FERRY VEHICLES. DIAGRAM BOOK.

© COPYRIGHT NOTICE

This PDF file has been created from the original book with permission of BRB Residuary Ltd who, retain copyright in the original document.

The original book was provided courtesy of Clive Mortimore.

This PDF version by David Faulkner, 2010.

Individuals may: use, retain and print out this PDF version for their private information or for that of their non-commercial enthusiast society or railway club.

This document and any copies produced from it in any form may not be sold or lent for any payment in any form other than to cover copying or transmission costs. No reproduction permitted in any other form or circumstance without prior permission from the original copyright holder

C. DIAGRAMS.

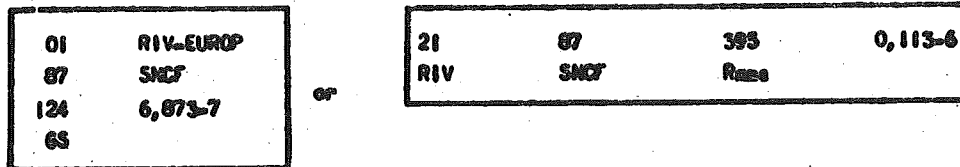
NOs - 5000 to 5999.

Between 1st October, 1964 and 1st October, 1968 all vehicles conforming to R.I.V. and U.I.C. for international traffic will be re-numbered according to U.I.C. Leaflet 438.

The number will comprise 12 digits as follows:

- 2 for the conditions which govern the exchange of the wagon
- 2 for the owning or registering administration
- 7 for indicating the operating characteristics of the wagon and its serial number
- 1 for self checking

The number may be inscribed in either of the following ways (according to the body shape)



All 12 digits must be quoted in all correspondence etc.

Verification (by calculation) of the correctness of a given Registration Number

1. The figures in the odd positions (counting from the right) are taken at their actual value
2. The figures in the even positions (counting from the right) are multiplied by 2.
3. The sum is then obtained of the figures from 1, and all the digits from 2.
4. A check is then made to ensure that the unit digit of the sum thus obtained is zero.

example:

Wagon number is	0	1	8	7	1	2	4	6	8	7	3	7
multiplied by	2	1	2	1	2	1	2	1	2	1	2	1
	0	1	16	7	2	2	8	6	16	7	6	7

Add together all digits $0 + 1 + 1 + 6 + 7 + 2 + 2 + 8 + 6 + 1 + 6 + 7 + 6 + 7 = 60$
 Check unit digit is zero 60
 Therefore given registration is correct.

New Index Pages Note Check Numbers are not quoted in the Index.

Wagons are listed numerically in sections according to their countries forth digits of the wagons number.

i.e. the country number is the third and

The Code Numbers and Identification Letters for the Countries are as follows:

Finnish State Railways	VR	10	British Railways	BR	70
U S S R Railways	SZD	20	Spanish National Railway Company	RENFE	71
Railways of the Albanian Peoples Republic	ALB	21	Jugoslavian Railways	JZ	72
Railways of the Korean Democratic Peoples Republic	KRZ	30	Hellenic State Railways	CEH	73
Railways of the Mongolian Peoples Republic	MTZ	31	Swedish State Railways	SJ	74
Railways of the Democratic Republic of Viet-Nam	DSVN	32	Turkish State Railways and Ports	TCDD	75
Railways of the Chinese Peoples Republic	KZD	33	Norwegian State Railways	NSB	76
Raab-Odenburg-Ebenfurt (Gyor-Sopron-Ebenfurt) Railways	GYSEV	43	German Federal Railways	DB	80
Budapest Local Railway	BHEV	44	Austrian Federal Railways	ÖBB	81
German State Railway	DR	50	Luxemburg National Railway Company	CFL	82
Polish State Railways	PKP	51	Italian State Railways	FS	83
Bulgarian State Railways	BOZ	52	Netherlands Railways Ltd.	NS	84
Roumanian Railways	GER.	53	Swiss Federal Railways	CFT	85
Czechoslovakian State Railways	CSD	54	Danish State Railways	DSB	86
Hungarian State Railways	MAV	55	French National Railway Company.	SNCF	87
Anzin Railways	ANZ	61	Belgian National Railway Company	SNCB	88
Swiss Private Railways	SP	62	Portuguese Railway Company	CCFP	94
Berne Lotschberg Simplon Bernese Alps Railway	BLS	63	Iran Railways	ISR	96
North Milan Railways	FM	64	Syrian Railways	SFS	97
Rjukan Railways	RJK	65	Lebanese Railways	CEL	98
International Sleeping Car Company	CIML	66	Iraqi Railways	IRR	99

The diagrams are being amended to show the loading capacities of each vehicle in the same way that it is painted on the wagon side, (English tons are shown on the Diagrams).

examples

A	B	C
10t	14t	18t

Fig. 1

Fig. 2

	A	B	C
	20t	24t	28t
S	20t	24t	
SS	15t		

The maximum loads a wagon can carry are shown under the letters A, B and C, these letters indicate the main continental line classification due to weight. 'A' lines carry a maximum of 16 tonnes per axle, 'B' lines 18 tonnes and 'C' lines 20 tonnes metric weight (English equivalents are 15.7 t, 17.7 t and 19.7 tons).

Continental ferry vehicles are normally accepted in this country with a maximum load corresponding to class B lines. Vehicles with a load up to class C lines can be accepted with prior consent, (see pages 2 - 12 for route availability, due to weight, S.F.V. book).

The S and/or SS in fig. 2 indicates vehicles suitable for travelling in continental traffic at speeds up to 62 and 74 miles per hour respectively.

'C' BOOK

	diagram		diagram	Rev
Refrigerator Van 21 54 805 6702 to 54 805 6712	C 5089			
Covered Wagon 21 54 204 1502 to 21 54 204 1647	C 5118			

'C' BOOK

	diagram		diagram	Rev.
<p>Fruit Wagons 21 55 165 0000 to 21 55 165 0009</p>	<p>C 5044</p>			
<p>Refrigerator Van 174142 to 174161 (Old Nos)</p>	<p>C 5045</p>			

PRIVATE OWNERS' WAGONS.

diagram

diagram Rev.

Open Carflat

21 70 049 6000 to 21 70 049 6049

C 5196

Bogie Tank Wagon

21 70 079 6000 to 21 70 079 6002

C 5203

Two Tier Car Truck

21 70 049 8000 to 21 70 049 8012

C 5179

21 70 049 8013 to 21 70 049 8024

C 5186

C' BOOK

BRITISH RAILWAYS. B.R.	Exchange Condition 21 & 31	Country 70	Page No. 26	
	diagram		diagram	Rev.
Machinery Wagon 21 70 909 6 037 to 21 70 909 6 044 21 70 909 6 045 to 21 70 909 6 057	C 5181 C 5181	Rectank 21 70 929 9 001	C 5212	
Scenery Van 21 70 239 7 000 to 21 70 239 7 003	C 5187	Flatrol Ell (Atomic Flask) 31 70 929 6006 to 31 70 929 6008	C 5217	
Weltrol E.J.C. 31 70 929 6 000 to 21 70 929 6 005	C 5205			
Two Tier Covered Car Transporter E 96286 to E 96299 (Old Nos)	C 5200			

C' BOOK

	diagram		diagram	Rev.
Refrigerator Van (Transfresa Co.)				
520001 - 520006)				
520026 - 520081) Old Nos.	C 5126			
520301 - 520400)				
520102 - 520106) Old Nos.	C 5199			
Covered Wagon				
5000126 - 500130)				
5000211 - 500280) Old Nos.	C 5136			

C' BOOK

	diagram		diagram	Rev.
Covered Van 21 73 204 4000 to 21 73 204 4231	C 5118			
Refrigerator Van 21 73 804 3000 to 21 73 204 3024	C 5125			

C' BOOK

ITALIAN STATE RAILWAYS F.S.	Exchange Condition 21	Country 83	Page No. 35	
	diagram		diagram	Rev.
Fruit & Vegetable Wagon 21 83 804 9000	C 5054			

C' BOOK

	diagram		diagram	Rev.
Open Wagon 21 87 414 5000 to 21 87 414 5099	C 5077	Open Wagon With Tank Containers 590448 to 590451 (Old Nos)	C 5185	
Bogie Covered Wagon 21 87 229 8001 to 21 87 229 8010	C 5085	Luggage Brake Van 29944 to 29949 (Old Nos)	C 5076	
		Luggage Van 29981 to 29999 (Old Nos)	C 5066	
		Sleeping Car 3788 to 3805 & 3983, 3989	C 5075	
Bogie Flat Wagon 31 87 424 6000 to 21 87 424 6024	C 5099	Bogie Tank Wagons. No 1114 Van	C 5214 C 5215	
Bogie Well Wagons 21 87 929 9000 to 21 87 929 9004	C 5103	Bogie Hopper Wagon No 1114 Van	C 5216	
21 87 939 7 995 to 21 87 939 7 999	C 5213			

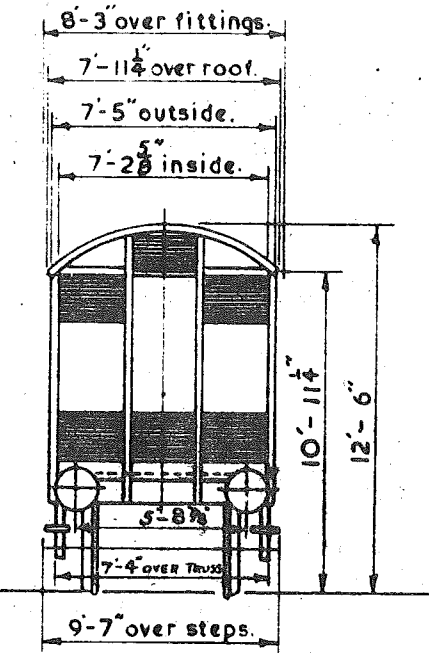
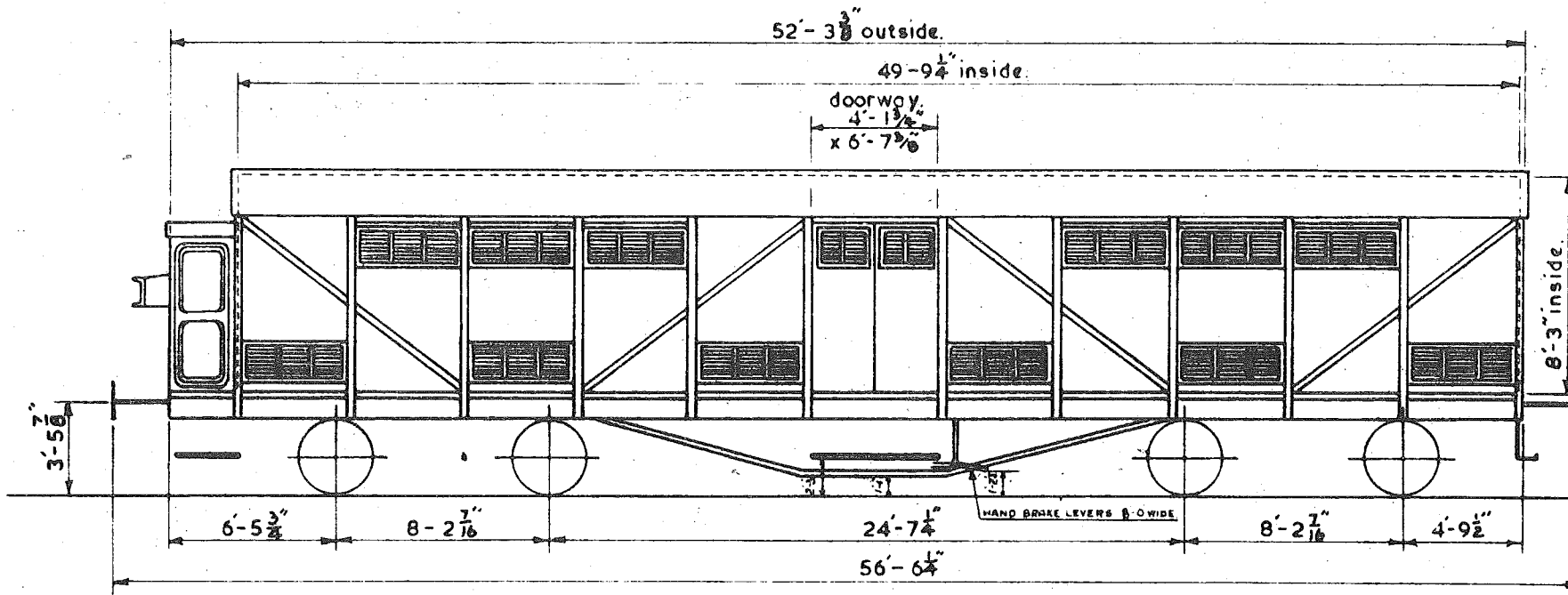
'C' BOOK

	diagram		diagram	Rev.
<p>Tank Wagon 21 88 078 5000 510045 (Old No)</p>	<p>C 5091 C 5146</p>			

RESTRICTIONS: - Western Region. NOT to run over the Burry Port & Gwendraeth Valley Rly. & branches or Plasmadoc & Pontcysyllte branches.
 Not to be despatched to the docks at Cardiff & Swansea without prior permission from the Continental Traffic Manager.
 L.T.E. Not to run between Baker St. & Finchley Rd. on the Metropolitan Line.

C.5044.
 Rev. ~~2~~ 3

FLOOR. - WOOD



WESTINGHOUSE, VAC. & HANDBRAKE.
 BUFFER DIA. 1'-5 3/4"

T. C.
 AVERAGE TARE 23 - 4.
 LOAD

A	B	C
20T13c	20T13c	

QTY 10.

FRUIT WAGON - HUNGARIAN.

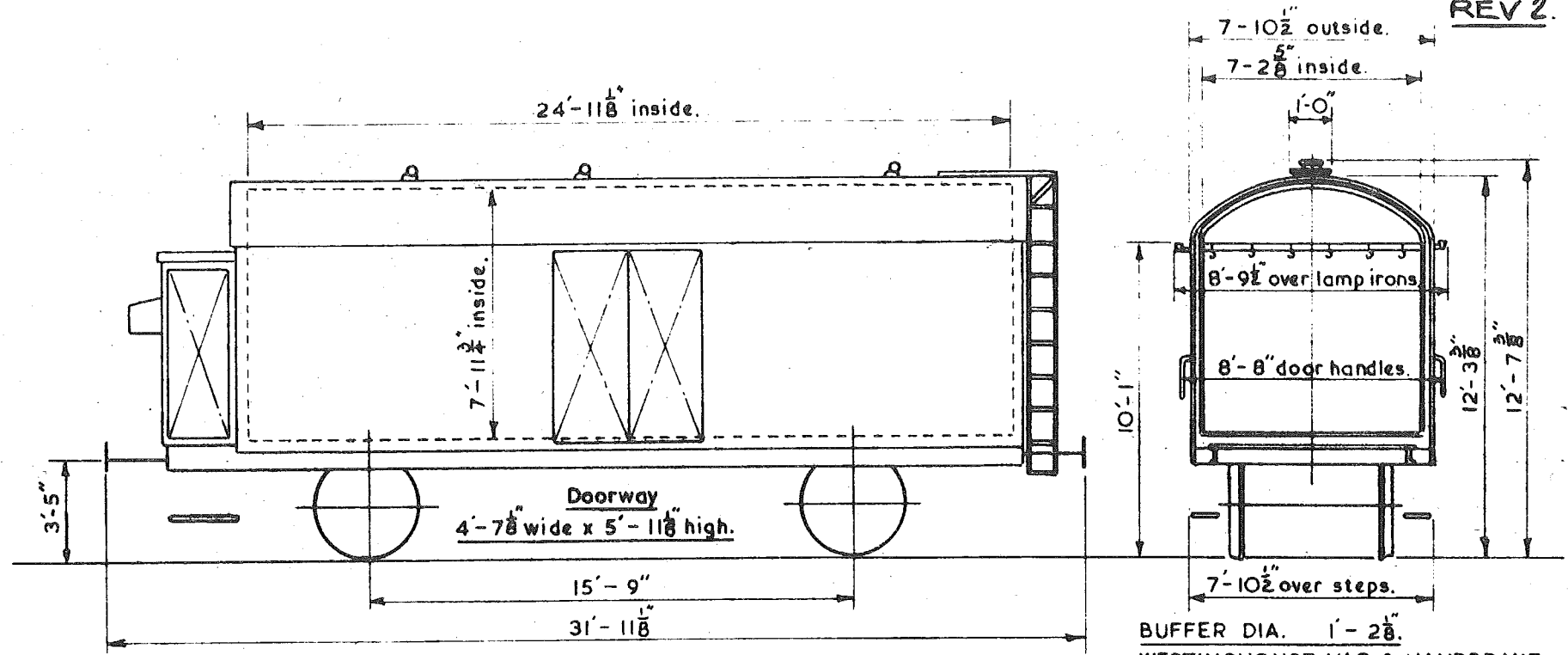
WAGON Nos. 113450 to 113465.
NEW NOS. 21 55 244 4000- 4009

RESTRICTIONS:- Western Region. Not to run between Swindon & Highworth or over the Burry Port & Gwendraeth Valley Rly. & branches or Plasmadoc & Pontcysyllte branches.
 Not to be dispatched to the docks at Cardiff & Swansea without prior permission from the Continental Traffic Manager
 L.T.E. Not to run between Baker St. & Finchley Rd. on the Metropolitan Line or over the Metro District Line.
 Southern Region. Not to run between Tonbridge & West St. Leonards.

C.5045.
 Rev. 23rd July 1953.

REV 2.

Dimensions "A" & "B" are unnecessary owing to narrow width over steps.



REFRIGERATOR VAN - HUNGARIAN. G1tk.

WAGON Nos. 174142 to 174161.

BUFFER DIA. 1'-2 1/8".
 WESTINGHOUSE, VAC. & HANDBRAKE.
 REQUIRES VACUUM ADAPTOR.

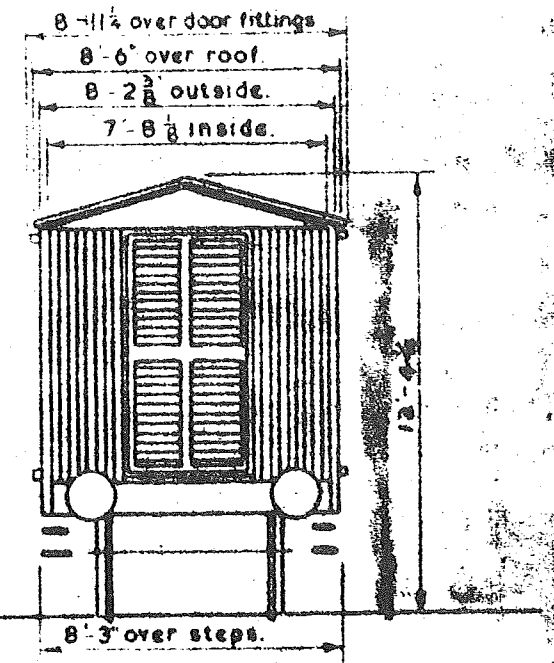
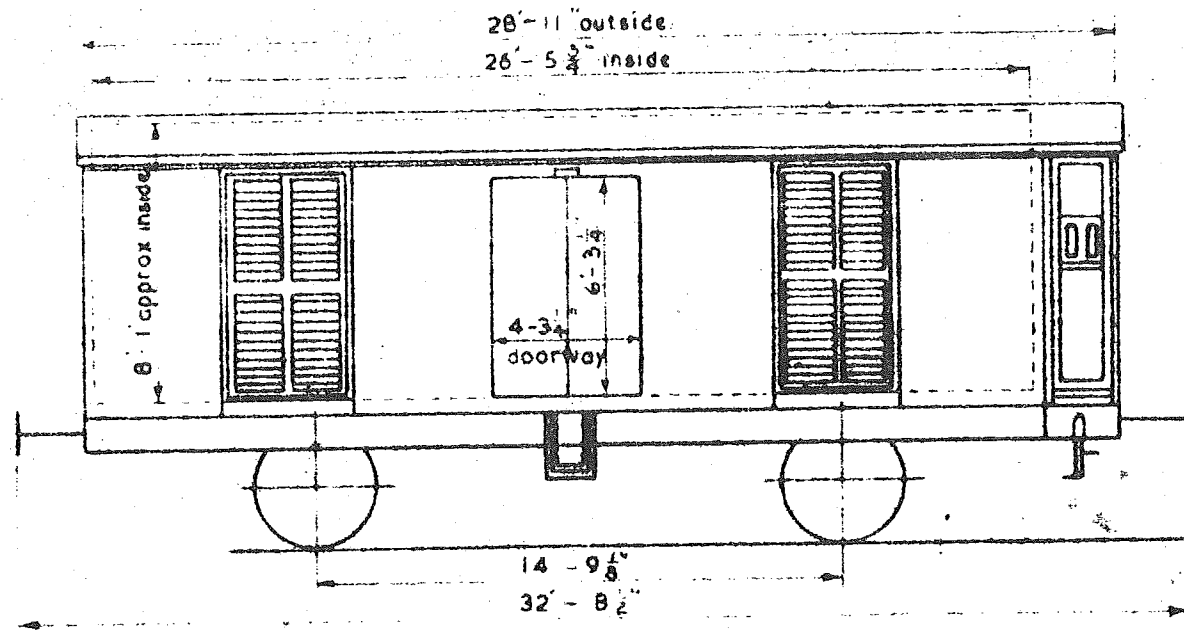
	T.	C.	Q.
AVERAGE TARE.	14	8	3.
LOAD.	12	6	0.

QUANTITY:- 20.

*

RESTRICTIONS - Southern Region - Not to run between Tonbridge & West St Leonards, Gipsy Hill & Crystal Palace, Charlton & Plumstead or Dartford & Strood.
 Western Region - Divisional Superintendent Newport, to be advised by telegram when wagons are dispatched to stations via Machen, Aberbeeg or Crumlin (ML).
 Not to run over the Burry Port & Gwendraeth Valley Rly. & branches, Plasmadoc & Pontcysyllte branches, or be dispatched to the docks at Newport, Cardiff & Swansea, without permission having been obtained from the Continental Traffic Manager.
 LTE - Not to run over the Metropolitan District Rly.

C.5054.
 REV-43



FRUIT & VEGETABLE WAGON - ITALIAN.

OLD WAGON No 344210

NEW WAGON No 11100 21 83 8049000

BUFFER DIA. 1-5 3/8"
 WESTINGHOUSE, VACUUM & HANDBRAKE.

AVERAGE TARE T. C. Q.
 12 - 0 - 0

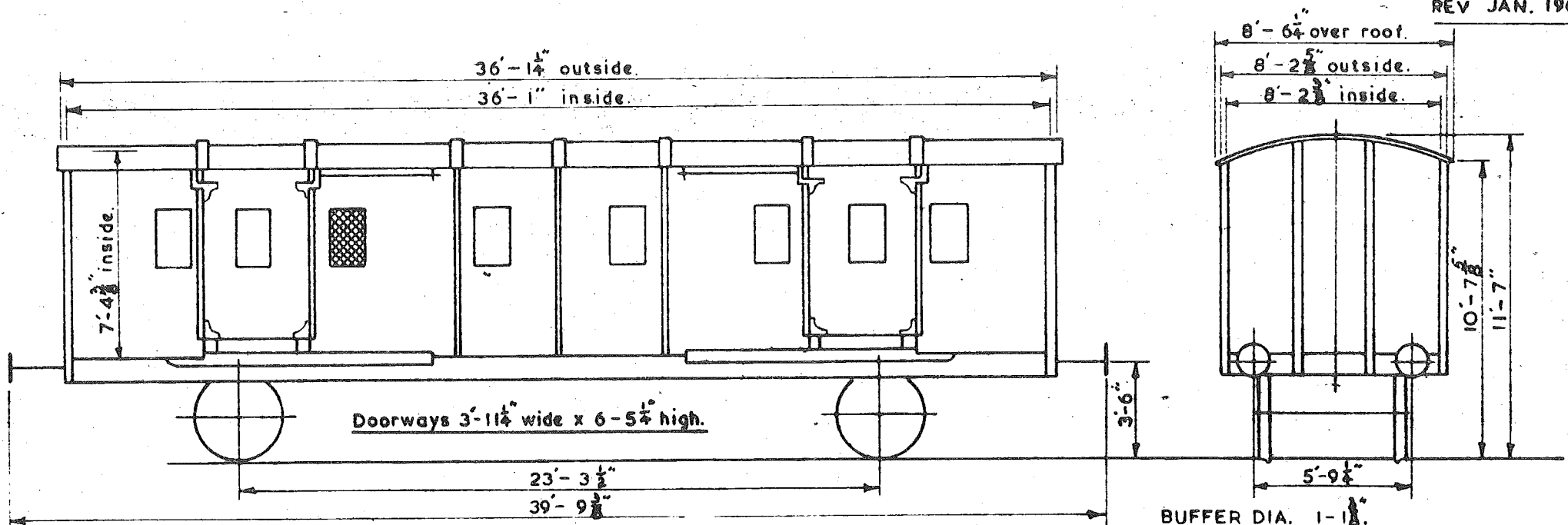
LOAD.

A	B	C
16T	16T	

Qty 1.

RESTRICTIONS:- Not to run between ~~Canterbury & Whitstable Harbours.~~
~~Nor~~ Tonbridge & West St.Leonards.

C.5066.
 REV. NOV. 1949.
 REV. JUNE 1965.
 REV. JAN. 1966



LUGGAGE VAN - FRENCH. (Nord). DZd2mq.

BUFFER DIA. 1-11 1/8"
WESTINGHOUSE VACUUM BRAKES
FITTED WITH STEAM PIPE.

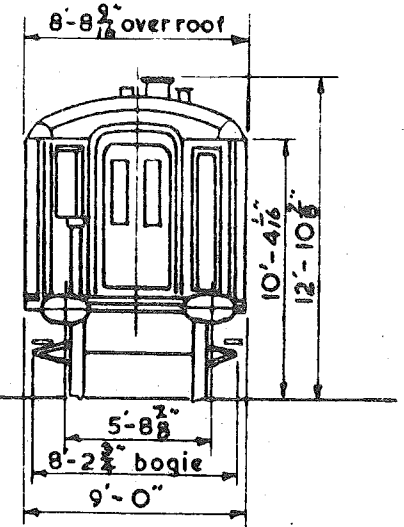
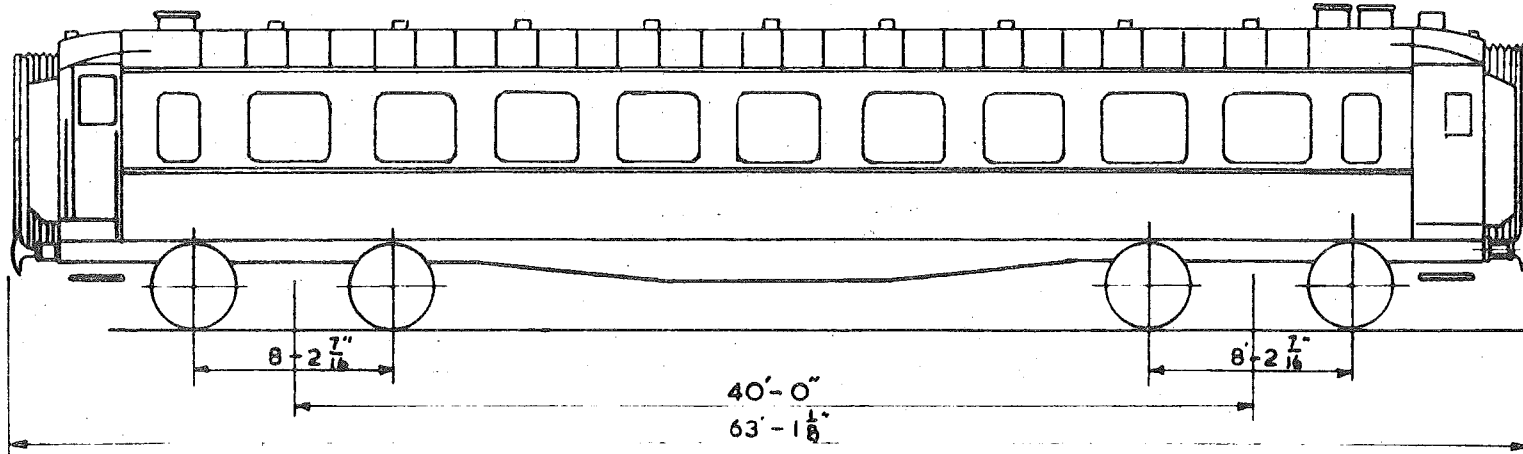
	T.	C.	Q.
AVERAGE TARE.	17	4	0.
LOAD.	6	18	0.

WAGON Nos. 29981 to 29999.

QUANTITY:- 19.

C.5075.

REV 1



SLEEPING CAR — FRENCH. (NORD.)

WAGON Nos. 3788 to 3799 & 3800 to 3805. & 3983, 3989.

BUFFER FACE 1'-10" X 1'-2"
WESTINGHOUSE, VAC, & HAND BRAKE.

T. C. Q.
AVERAGE TARE. 54 - 12 - 0.

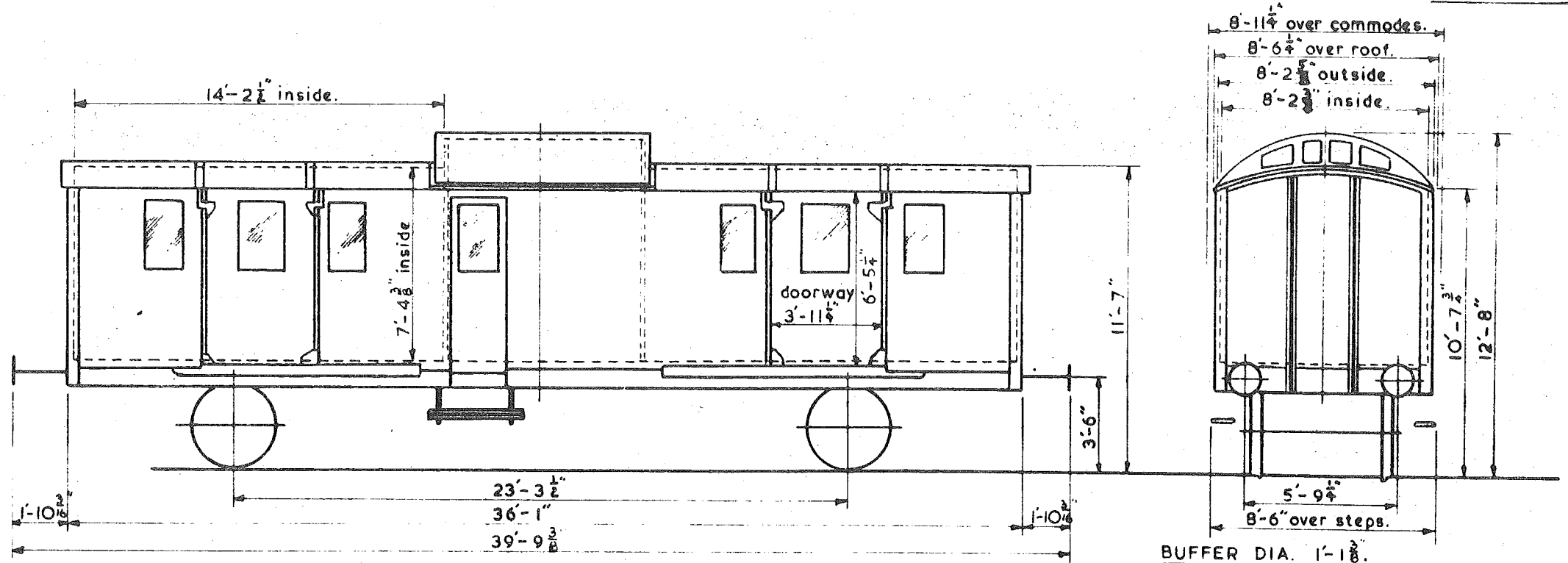
CAPACITY. 18 BERTHS.

FITTED WITH STEAM HEATING.

QUANTITY ~ 18.

RESTRICTIONS:- Not to run between ~~Canterbury & Whitstable Harbour.~~
Not Tonbridge & West St. Leonards.

C.5076.
 REV. NOV. 1949.



LUGGAGE BRAKE VAN - FRENCH, NORD. S.N.C.F.2. - Dqd2mg.

WAGON Nos. 29944 to 29949.

BUFFER DIA. 1'-1 3/8.
WESTINGHOUSE, VACUUM & HAND BRAKE.
FITTED WITH STEAM PIPE.

	T.	C.	Q.
AVERAGE TARE.	19	4	0.
LOAD.	6	18	0.

QUANTITY:- 6.

26558 & 26559 added 12-2-48. Rev. Nov. 49. T.C. 7/69.

RESTRICTIONS: - Not to run between Canterbury & Whitstable Harbour.

C.5077.

REV 7th Sept 1951

REV SEPT 1959

REV SEPT 1961

REV JAN 1966

REV MAR 1966

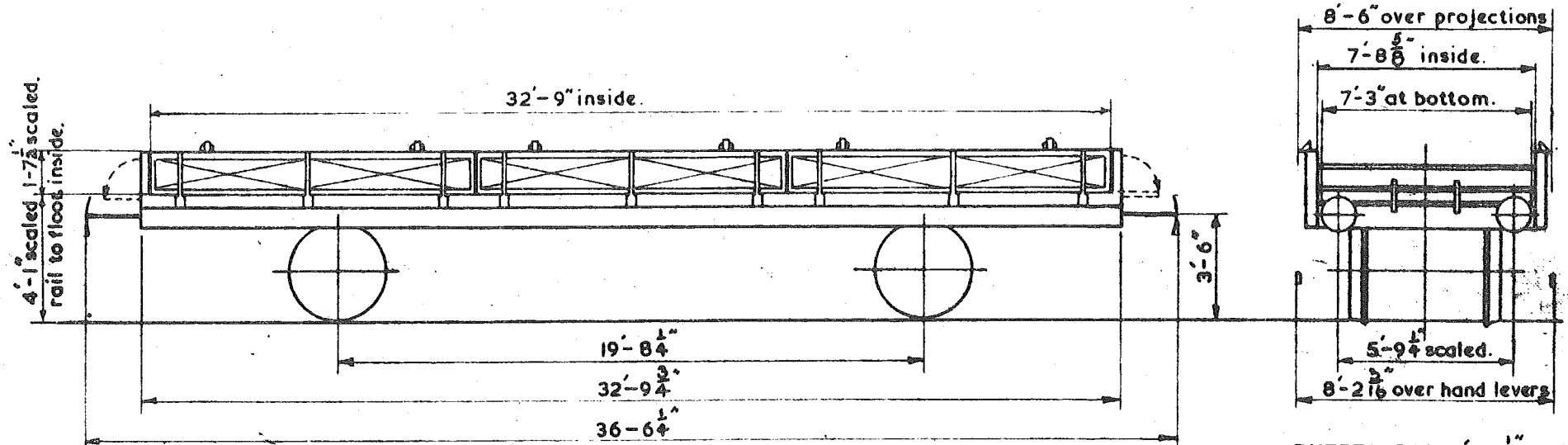
REV APRIL 1966

Distance between Solebars: - $6' - 1\frac{1}{2}''$

Dimension "A": $1' - 2\frac{1}{2}''$

Dimension "B": $1' - 3\frac{1}{4}''$

Measured from inside of Solebar.



OPEN WAGON - IPA - FRENCH - NORD.

BUFFER DIA. $1' - 3\frac{1}{2}''$ scaled.

	T.	C.	Q.
AVERAGE TARE	12	0	0
LOAD. FAST	11	15	0
" SLOW	19	15	0

- 17 WAGONS BETWEEN 96920 & 96939 FITTED VACUUM, WESTINGHOUSE & HAND BRAKE.
- 30 WAGONS BETWEEN 96960 & 96989 VAC. THRO PIPE, WESTINGHOUSE & HAND BRAKE.
- 53 WAGONS 96847 to 96899 VAC THRO PIPE, WESTINGHOUSE & HAND BRAKE. (to one wheel only)

TOTAL QUANTITY. 100.

G.A. Drg.
No. 13231

C.W. 9/23.

RESTRICTIONS:- Not to run between ~~Canterbury & Whitstable Harbour.~~

~~Nor~~ Tonbridge & West St. Leonards.

Nor Baker St. & Finchley Rd. on the Metropolitan Rly.

Nor round curves of less than $3\frac{1}{2}$ chains radius.

Prior advice to be given by the Traffic Dept. of Consignments to private sidings on the L.M.S.

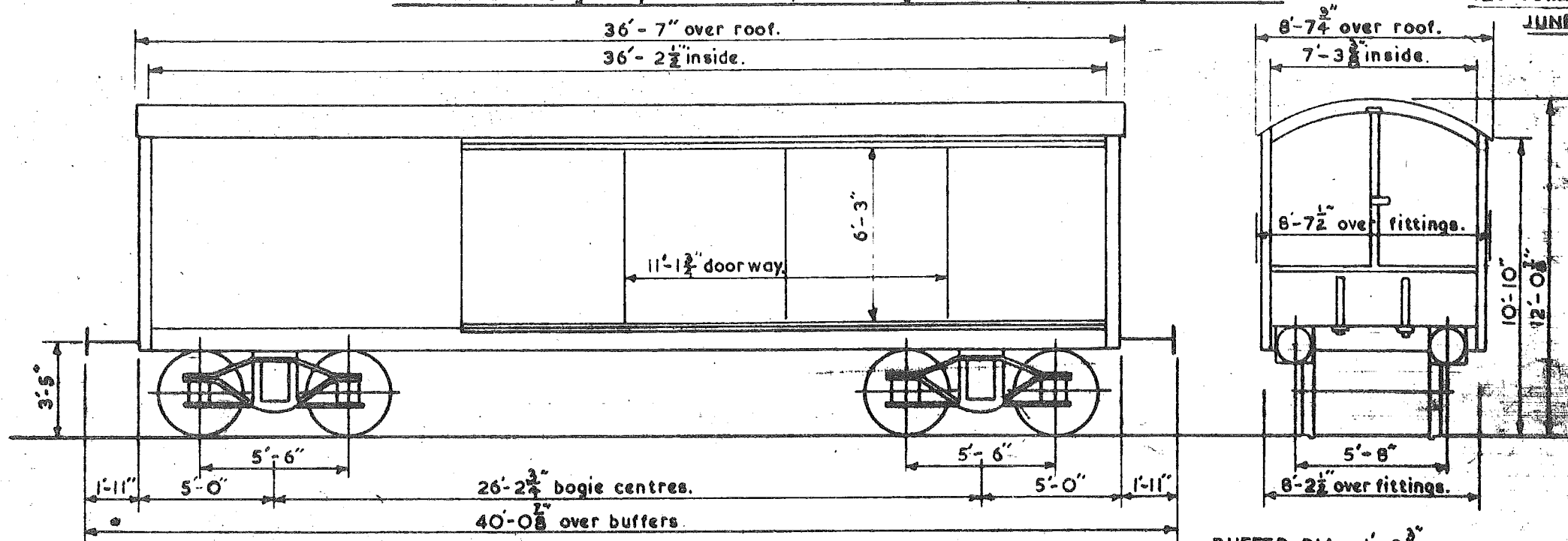
C. 5085

REV. SEPT. 1953

REV. DEC. 1957

REV. MAR. 1962

JUNE '66



COVERED WAGON - HJAY - FRENCH. NORD.

BUFFER DIA. 1'-3 1/2".
WESTINGHOUSE, VAC. & HANDBRAKE.

	T.	C.	Q.
AVERAGE TARE.	18	4	0.
LOAD.	14	15	0.

QUANTITY - 10

(OLD) WAGON Nos. 87950 to 87959.

(NEW) WAGON Nos Mac f k 21 87 229 B 091 to 21 87 229 B 010

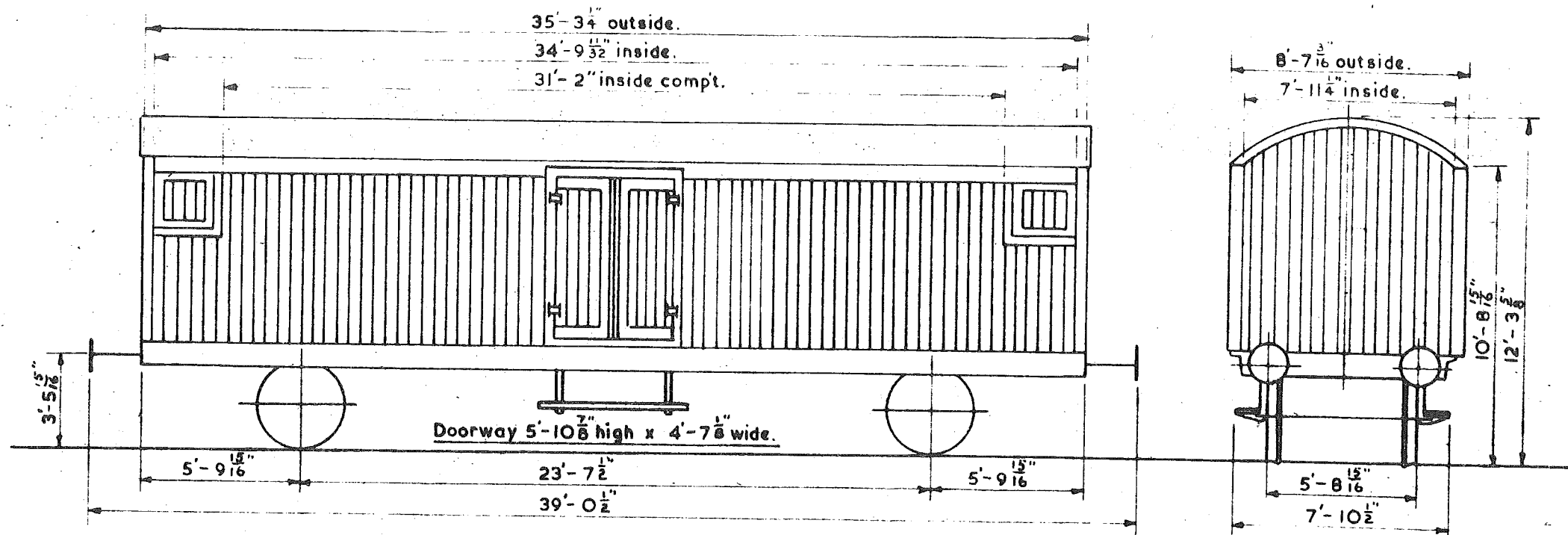
Load modified T.C. 2769 27/1/50

H.O. 6665/37.

RESTRICTIONS:- Not to run between ~~Canterbury & Whitstable Harbour.~~
 Nor Tonbridge & West St. Leonards.
 Nor Baker St. & Finchley Rd. on the Metropolitan Rly.
 Permission to be obtained prior to running on the L.M. Rly

C. 5089.

Rev. OCT '66



REFRIGERATOR VAN — CZECHOSLOVAKIAN.

BUFFER DIA. 1'-3 3/4"
WESTINGHOUSE VACUUM & HANDBRAKE.

OLD WAGON Nos. 2-16600 to 2-16609.
NEW WAGON Nos. 21 54 8056702 to 8056712

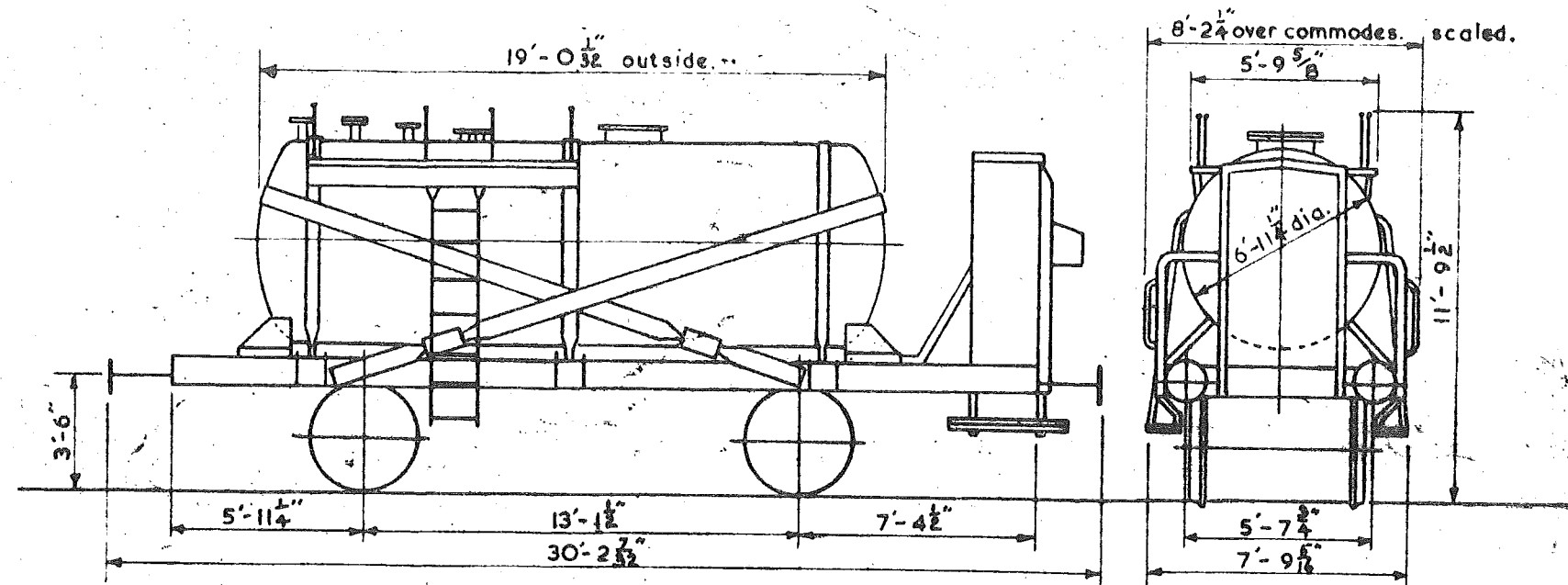
	T. C. Q.	
AVERAGE TARE.	16 - 14 - 2.	
LOAD.	A	B
	12t 18c	12t 16c
QUANTITY: ~ 9.		

H.O. 8112/26.

RESTRICTIONS:- ~~Not to run between Canterbury & Whitstable Harbour.~~

C.5091.

REV. 3.



TANK WAGON - BELGIAN.

WAGON Nos

500002 CIE AUXIL INTERNATIONAL

New Nos

21 88 078 5000

BUFFER DIA. 1'-2" scaled.

WESTINGHOUSE & HANDBRAKE.

AVERAGE TARE. T. C. Q.
10 - 17 - 0.

LOAD.

A	B	C
18T	18T	

QTY 1

H.O. 8112/26.

Accepted by the Southern Rly. Co. for use in England by prior arrangement only. For procedure see Index.

S.R. Restriction:-

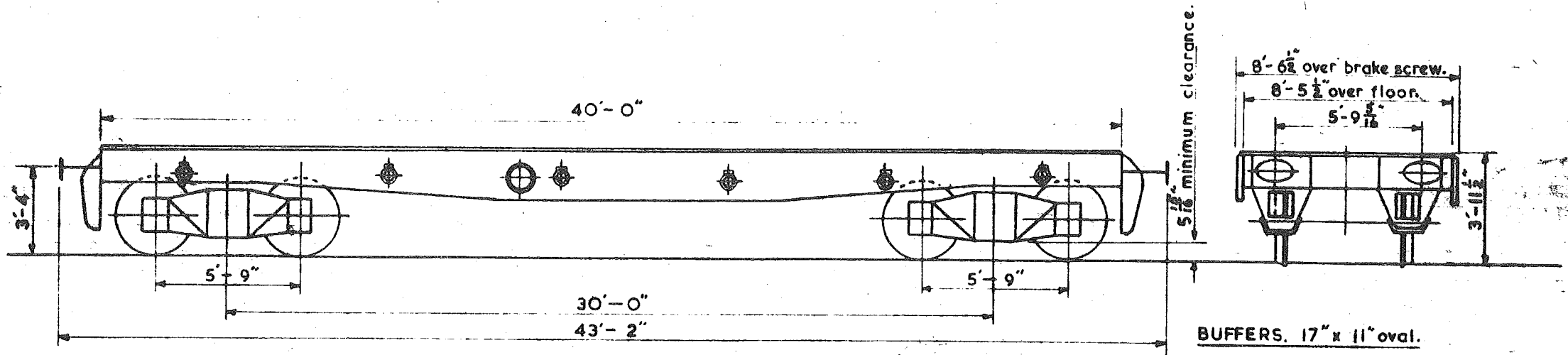
Speed restriction if underclearance is less than 6 inches.

C. 5099.

REVISED MAY 1955

REVISED AUGUST '64

REVISED OCTOBER '64



SPY. MACHINERY WAGON - FRENCH. NORD.

WAGON NOS. 96722 TO 96746

BUFFERS. 17" x 11" oval.

COMPRESSED AIR & VACUUM THRO' PIPES.

SIDE WHEEL HAND BRAKE

AVERAGE TARE. 17T. - 14C. - 1Q.

CONCENTRATED LOAD. 30T. - 0C. - 0Q.

DISTRIBUTED LOAD. 45T. - 0C. - 0Q.

QUANTITY:- 25

FOR RESTRICTIONS SEE SEPARATE SHEET.

C.5103.

REV. March 1962

Rev. 11th July 1952.

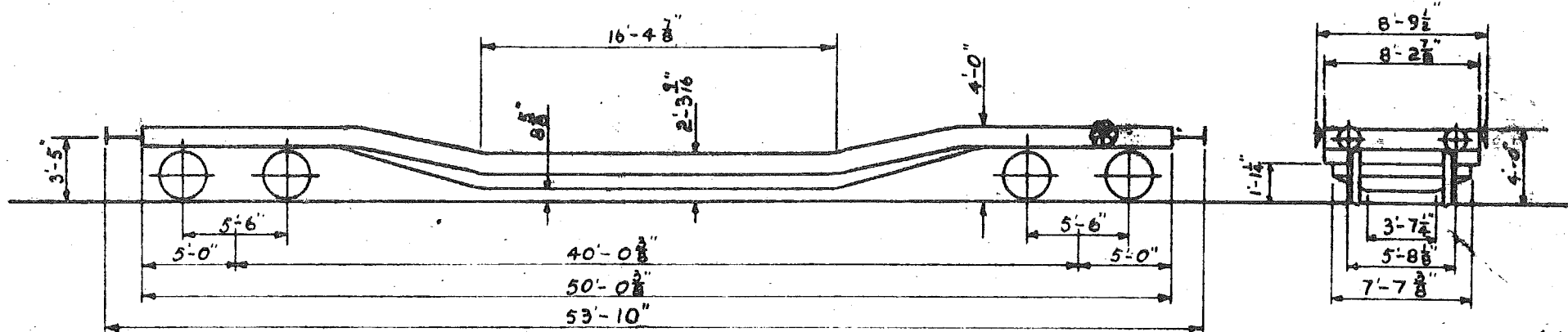
Rev. 16th Oct. 1952.

Rev. 27th Apr. 1953.

Load 25 tons distributed over full length of wagon.

* or 25 " " " " " " well portion.
or 20 " " " 9'-10" at centre of well.

WAGON WILL NEGOTIATE A CURVE OF $3\frac{3}{4}$ CHAINS RADIUS.



WELL WAGON - FRENCH. SSA y.

SCREW HAND BRAKE & WH'SE THRO' PIPE.

WAGON Nos. (70)98589 & (70)98590: 98581 98582 & 98585

	T.	C.	Q.
AVERAGE TARE.	22	13	0.
LOAD.	25	0	0.

QUANTITY: ~ 5

CW.4/116.

RESTRICTIONS:- As per R.C.H. Pink Pamphlet & Appendices to Working Time Tables etc. and the following additional Regional Restrictions.

C. 5103.

SOUTHERN.	LONDON MIDLAND.	WESTERN.	EASTERN.	NORTH EASTERN.	SCOTTISH.	L.T.E.
<p>Prohibited on I.O.W. Railways. K & E. Sussex line (Headcorn-Rolvenden.) Lyme Regis branch. And on the following sections at Bricklayers Arms:- F. Section. Not to be worked into any Shed Road, or No. 9. road, nor cattle dock road No. 10. J. Section. Not to be worked into No. 8 road.</p>	<p>Entirely prohibited except by prior arrangement, when they will be treated as out-of-gauge loads on each occasion they are required to travel.</p>	<p>Prohibited on:- Didcot - Provender Stores sidings. Garden or back road & connection to New Rd. Filleigh - Loading bank alongside goods shed line. Goonbarrow branch - Old Bean siding. Wenford branch. Cattewater branch beyond tunnel. Dowlais I.C.I. Works. Caerphilly tar distillation plant at Wernddu. Clee Hill branch. (Bitterley to Clee Hill top). Criggion branch. Portmadoc - Cattle pen siding. Brecon - Coal wharf siding And on certain sidings at the following docks:- Newport. Cardiff. Barry. Swansea. In addition, these vehicles are subject to the siding prohibitions applicable to wagons classified C.I. as set out in the Commercial Superintendent's schedule headed "Continental Train Ferry Wagons" issued in December 1948. Screw couplings to be slackened when negotiating curves.</p>	<p>As for London Midland.</p>	<p>Acceptance into private sidings etc. will be a matter for local consideration on basis of comparison with similar B.R. vehicles already using them.</p>	<p>Prohibited on Auchmuty branch. Gartverrie branch and North Leith Goods Shed connection. By prior arrangement only if required to work to any factories, mills or docks where curves of less than 3$\frac{3}{4}$ chains radius are involved.</p>	<p>Prohibited on all lines other than surface lines.</p>

RESTRICTIONS: NOT TO RUN ON THE FOLLOWING LINES: TONBRIDGE, ISLE OF WIGHT LINES, EAST KENT LINES, KENT & EAST SUSSEX LINE, NEW HAVEN SWING BRIDGE, HAYLING ISLAND BRANCH, WENFORD BRIDGE LINE, & AXMINSTER TO LYME REGIS.

C.5118.

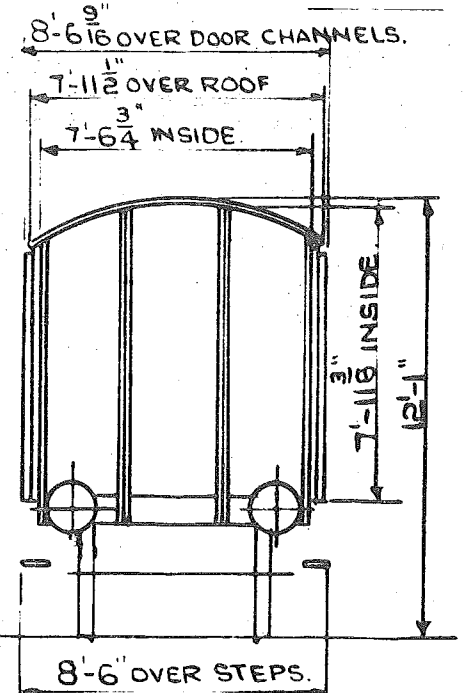
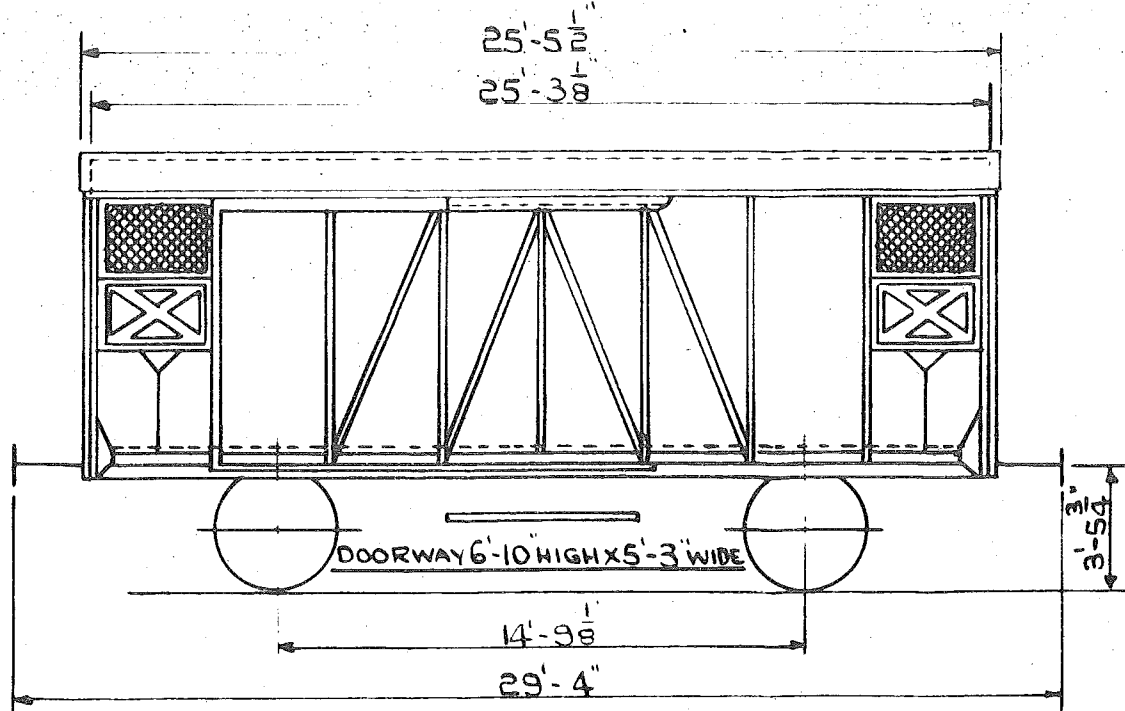
REV FEB 1958

Nov '66 OCT 1965

JUNE '66

JULY '66

NEW WAGON Nos Hfg. 21 73 204 4 000 to 21 73 204 4 231 GREEK SERIES
21 54 204 1502 to 21 54 204 1647 CZECHOSLOVAKIAN SERIES



WAGON NOS 28501-28752 HAVE THROUGH VACUUM PIPE.

WESTINGHOUSE & HAND BRAKE.

TARE 10T. IBC. O.G.

LOAD	A	B	C
	20T		20T

QUANTITY, 117 CZECH, 21 GREEK

(OLD)
WAGON NOS

01-1013 TO 01-2870 SERIES. CZECHOSLOVAKIAN.
28501 TO 28732 SERIES GREEK

COVERED WAGON.
CZECHOSLOVAKIAN, & GREEK
EX. UNRRA.

RESTRICTIONS:- As per R.C.H. Pink Pamphlet & Appendices to Working Time Tables etc. and the following additional Regional Restrictions:-

C.5125.

SOUTHERN.	LONDON MIDLAND.	WESTERN.	EASTERN.	NORTH EASTERN.	SCOTTISH.	L. T. E.
<p>Prohibited on the following branches:- Rye Harbour. Lyme Regis. Hayling Island. And on the following lines:- East Kent. K. & E. Sussex. Weymouth Quay. I. O. Wight. And on:- Newhaven swing bridge. And between Tonbridge & Bottle via Robertsbridge.</p>	<p>Prohibited on the following lines:- Derwent Junc. to Keswick. Buckley Junc. to Connaught Quay Docks. Ffrwd Junc. to Brynmally Colliery. And on the following branches:- Springs, L.N.W. Wigan area. Horrocksford. Liverpool. N. Docks, Gulf Colonnade & Regent Rd. Newfields Colliery, Tunstall. <u>lift bridge.</u> Brompton, Chestertield. West Bridge, Leicester. Beggartee, Longley Mill. Cinderhill. And on the following sidings:- Henlow goods line back of station. Luton Corporation Highways depot. Certain sidings at Burton-on-Trent. Helsby, W. Cheshire Junc. Bridge 195. Birkenhead, Bridge 2. Abbey St. coal yard & portion Bridge 59 Monk's Ferry. Liverpool, St. Howard St. timber incline. Burton-on-Trent, Bridge 2. Mansfield Woodhouse, portion bridges 41 & 42. Denby, portion bridges 15 & 15A. Rockingham Colliery, E.W. Conn. with L.N.E. Redford to Bulwell, all siding bridges between stns. Leicester, Humberstone Rd. portion bridge 13. St. Pancras Goods, Bridge 10. Poplar Docks Swing bridge 276. Bow, portion bridge 249. Longton, portion bridges 12 & 13. Birkenhead between Brook St. & Canning St. N. Not to travel over coal drops & tips.</p>	<p>Prohibited on the following lines:- Ashton Junc. to Conons Marsh. Wapping Wharf to Ashton Swingbridge Junc. Clifton Bridge to Portishead. Evercreech to Burnham. Glastonbury to Wells. Bridgewater Docks West End. Dunball Wharf. Pyle Junc. to Waterhall Junc. Llyncllys Junc. to Llangynog. Abermule to Kerry. Cemmes Rd. to Dinas Mowddwy. Lampeter to Aberayron. And on the following branches:- Lamborne Valley. Wallingford. Abingdon. Fairford. Watlington. Uxbridge, Vine St. Brentford. Faringdon. Highworth. Malmesbury. Camerton. Blagdon Colne. Coolpit Heath. Clandown. Culm Valley. Ashburton. Goonbarrow. Corbeon. Wenford. Callington. Torrington St. Dennis- Slip siding. Burngullow- Parkyns siding Falmouth-Docks sidings. Cymffwrdd. Hayle Wharves- Penpol siding & beyond weighbridge Golynos. <u>Harveys siding</u> Nettlefolds. Llantrisant Common. Burry Port & Gwendraeth Valley Rly. & branches. Criggion. Clee Hill. Pontcysyllte. Stirchley. Porthywaen. Nantmawr. Brecon - Coal Wharf siding And on certain sidings at the following docks:- Newport. Cardiff. Barry. Swansea.</p>	<p>Prohibited on lines classified R.A. 1.2. & 3.</p>	<p>Prohibited on inclines on Charlow and Sacriston Rly, Pontop branch, & Tanfield branch. Crowley Tunnel - Washerley branch. Ashes branch. Rogerley Quarry siding, Frosterley. Swine Lodge incline Seaham. Lines classified as R.A. 1. & 2. with the following exception. Scarborough, Gallows Close to Whitby, Prospect Hill Junc. & lines other than main goods & passenger lines in the Leeds & Bradford district. ex L.M.R.</p>	<p>Prohibited on Souterhouse, Auchmuty, Gartverrie & Mayfield Colliery branches Regent St depot. Greenock & North Leith Station sidings. Lauder. Gifford. St. Combs. Carmyllie. Dornoch. Maidens & Dunure branch lines.</p>	<p>Prohibited on Baker St. to Finchley Rd. & lines other than surface lines.</p>
<p>Z. 11/131.</p>	<p>When coupled to fast trains, not to exceed 10 m.p.h. thro' the following Kilsby down. Sough down <u>tunnels.</u> Beechwood down. Macclesfield up. Blea Moor down. Kirkdale No.1. fast down. Hampstead Heath both. Helm down. Kings Cross, St. Pauls Rd. Junc. & Met. Millwood down. Stalybridge down & bridges 32 & 28 up. Lydgate both.</p>	<p>In addition these vehicles are subject to the siding prohibitions applicable to wagons classified D.I. as set out in the Commercial Superintendent's Schedule headed "Continental Train Ferry Wagons" issued in December 1948.</p>	<p>OCW. 380/1/12/47.</p>			
	<p>P/OG/330IR.</p>	<p>Screw couplings to be slackened when negotiating curves in the Dock areas.</p>				<p>K2/53, 348.</p>

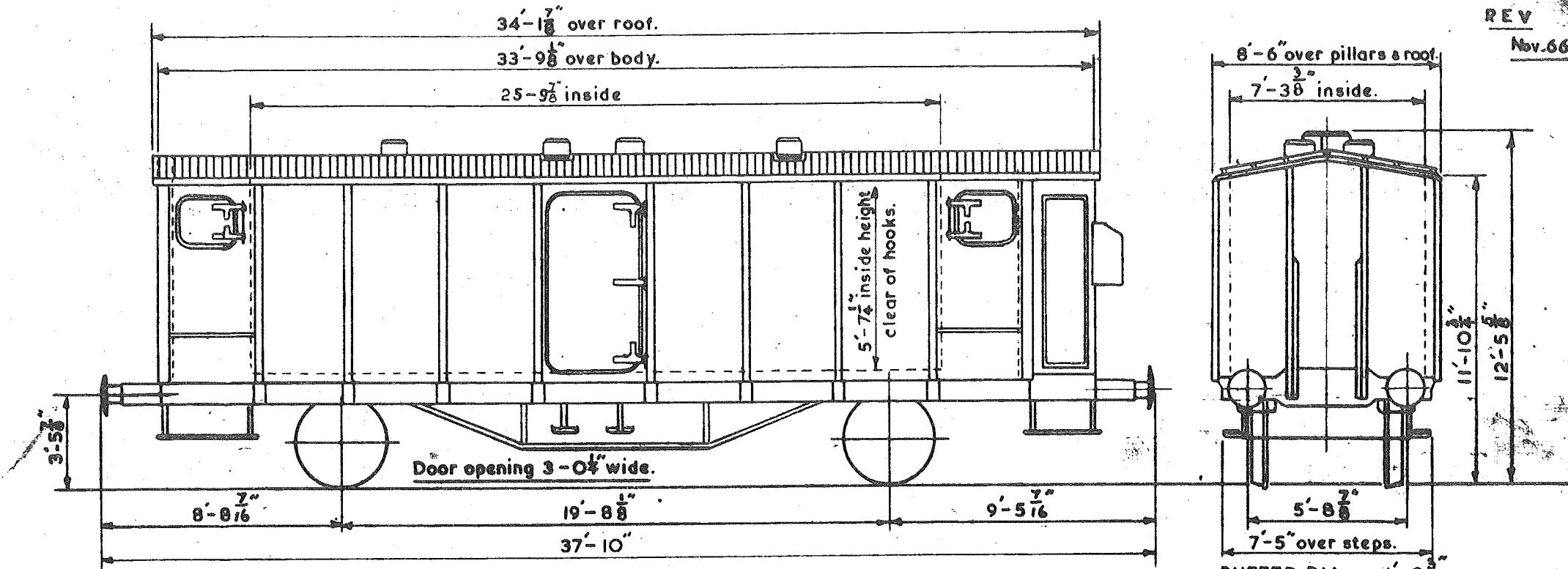
FOR RESTRICTIONS SEE SEPERATE SHEET.

WAGON WILL NEGOTIATE A CURVE OF $4\frac{1}{2}$ CHAINS RADIUS.

C.5125.

REV

Nov.66



REFRIGERATOR WAGON - GREEK. (FITTED WITH HOOKS IN ROOF.)

(OLD) WAGON Nos. 18651 to 18675.

(NEW) WAGON Nos. 1 c f m f s v 21.73.804.3.000 to 21.73.804.3.024

BUFFER DIA.	1'- $\frac{3}{4}$ "
WESTINGHOUSE BKE.VAC.THR'PIPE & H.B.	
R.H.LEVER BRAKE, BOTH SIDES.	
TARE.	18 - 10 - 0.
LOAD.	14 - 0 - 0.

QUANTITY. 25.

C.W.41/11.

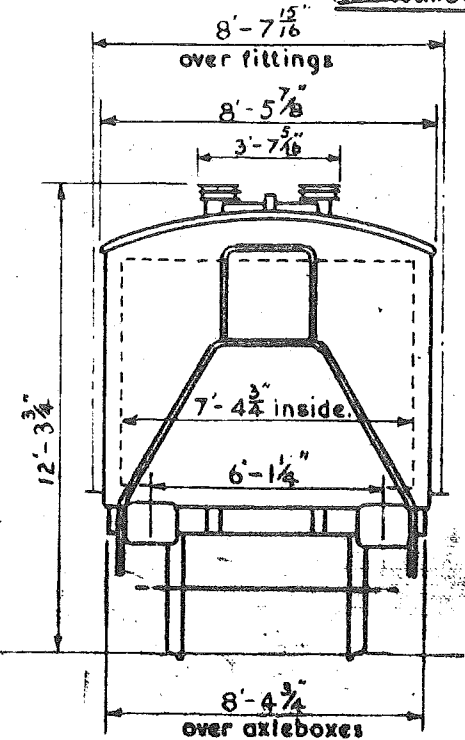
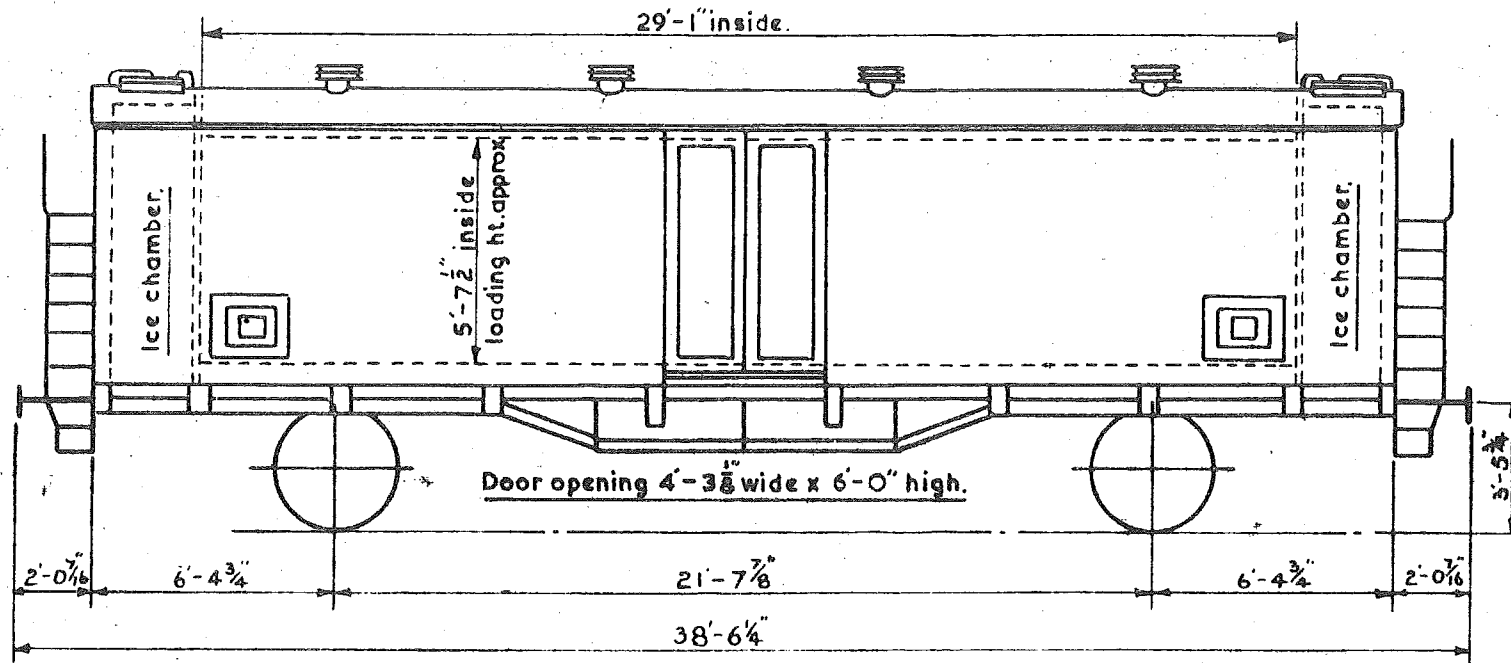
FOR RESTRICTIONS SEE SEPERATE SHEET.

Rev. 23rd. Feb. 1953.

C.5126.

REV 10th Jan. 1953.

WAGON WILL NEGOTIATE A CURVE OF $3\frac{3}{4}$ CHAINS RADIUS.



REFRIGERATION WAGON. — SPANISH.

TRANSFESA Co.

WAGON Nos. PNfv. { 520001 to 520006.
520026 " 520081.
520301 " 520400.

BUFFERS 18" x 14 $\frac{1}{2}$ " approx.
COMPRESSED AIR, VACUUM AND
HANDBRAKES.

	T.	C.	Q.
TARE —	17	0	0.
LOAD —	14	14	2

QUANTITY. 162.

CW.9/5.

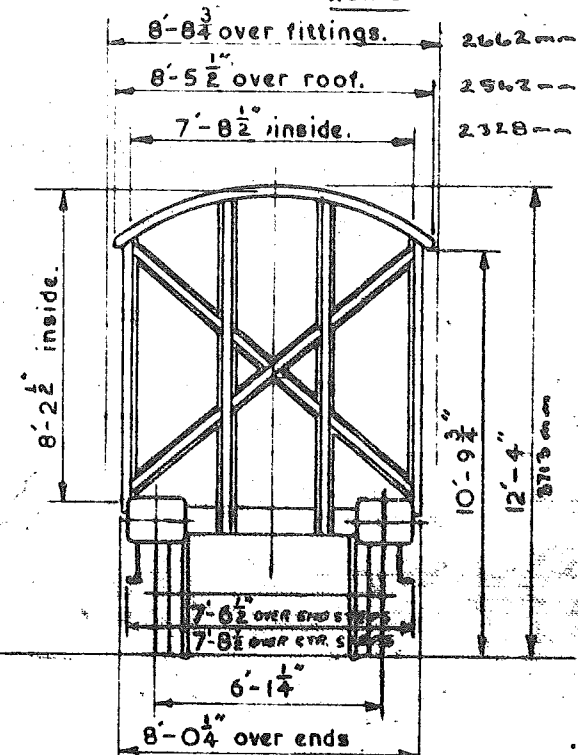
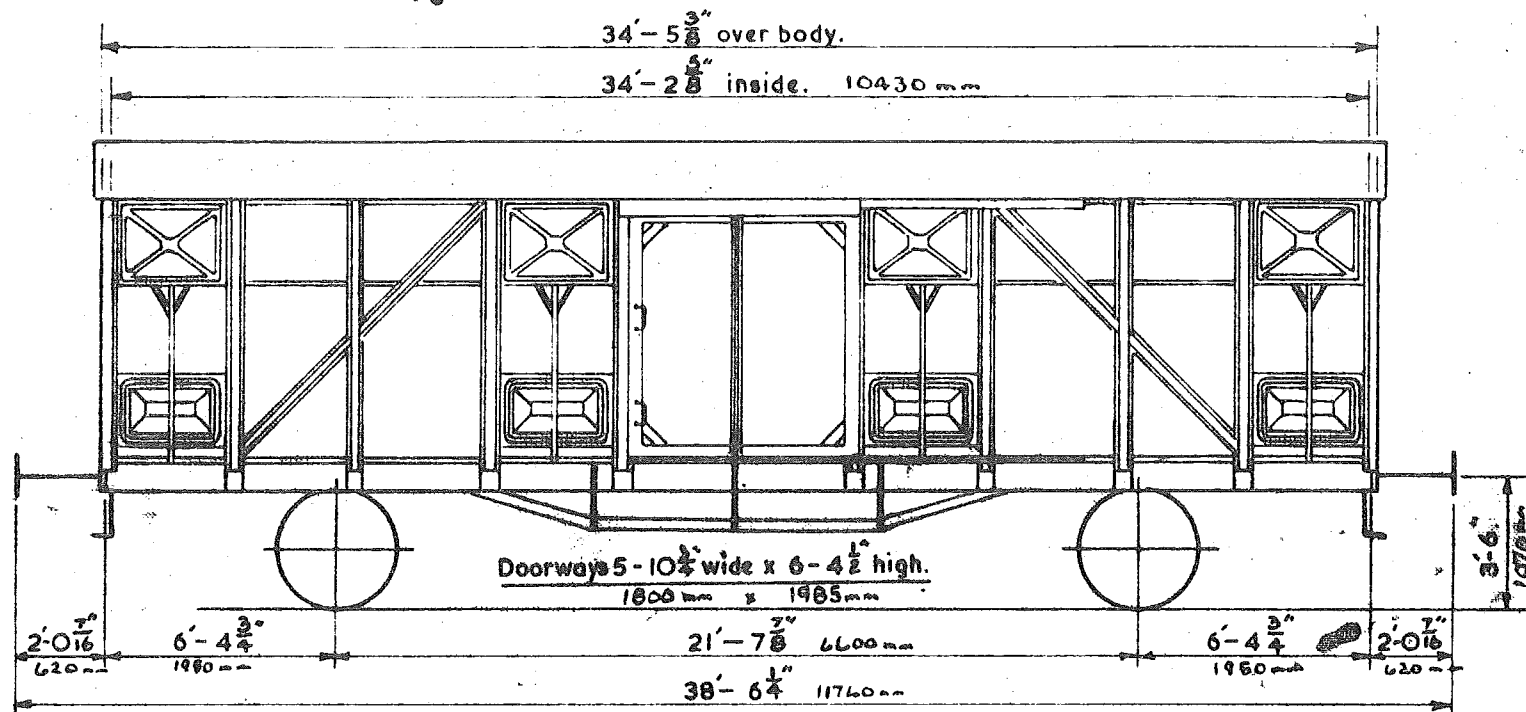
FOR RESTRICTIONS SEE SEPARATE SHEET.

FLOOR - WOOD - AREA 29.3 sq yd.
 SHelves - WOOD - AREA 23.9 sq yd.

WAGON WILL NEGOTIATE A CURVE OF $3\frac{3}{4}$ CHAINS RADIUS.

C.5136.

Rev. 5.



COVERED WAGON - SPANISH. TRANSFESA Co.

WAGON Nos. PJIV 500126-500130. & PJIV 500211-500280.

Tare - 16T 15c

Load: -

BUFFERS 10" x 14" approx.
COMPRESSED AIR, VACUUM AND HANDBRAKES.

	A	B	C
	16T 15c	20T 13c	24T 11c
S	16T 15c	20T 13c	

QTY 75

RESTRICTIONS:- As per R.C.H. Pink Pamphlet & Appendices to Working Time Tables etc. and the following additional Regional Restrictions.

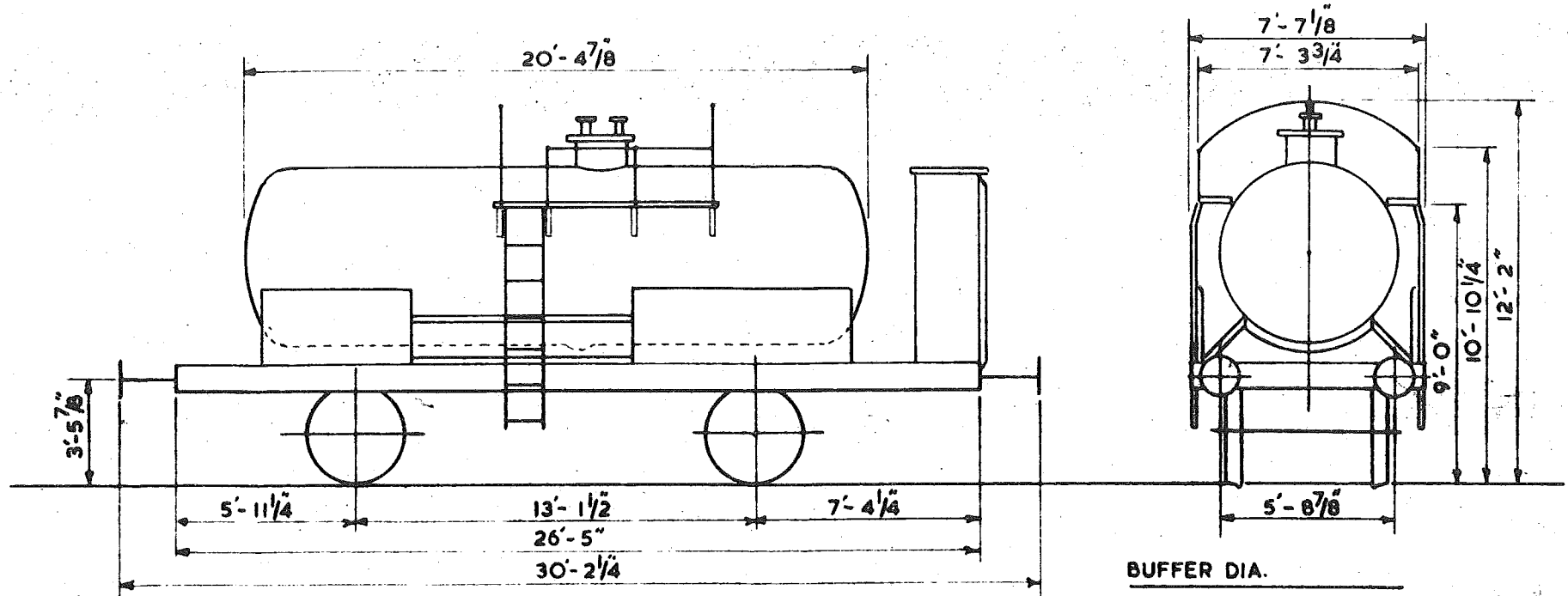
C.5126.

SOUTHERN.	LONDON MIDLAND.	WESTERN.	EASTERN.	NORTH EASTERN.	SCOTTISH.	L.T.E.
<p>Prohibited on:- Tonbridge to Battle via Robertsbridge. Tovil goods line. Faversham Wharf. Rye Harbour Br. Sandling Junc. & Hythe. K & East Sussex. Bently & Borden. Sheppey Light Rly. Kemp Town branch. East Kent line. Newhaven Swing Bridge. I.O.W. Railways. Axminster & Lyme Regis Light Railway. Amesbury & Bulford Light Rly. Hayling Island Branch.</p>	<p>Prohibited on:- Derwent Junc. to Keswick. Horrocksford branch. Helsby, W. Cheshire Junc. Siding bridge 195. Birkenhead, bridge 2, Abbey St. coal yard. " sidings portion bridge 59. Monks Ferry. Liverpool, Gt. Howard St. timber incline. " N. Docks branch. Gulf Colonnade & Regent Rd. lift bridge. Newfields Colliery branch, Tunstall. Burton-on-Trent, bridge 2. Marstons Brewery. Mansfield Woodhouse, sidings portion bridges 41 & 42. Denby, sidings portion bridges 15 & 15A. Brampton branch, Chesterfield. Rockingham Colliery empty wagon con. with L.N.E. Leicester, W. Bridge branch. Beggarslee branch, Langley Mill. Radford to Bulwell all siding bridges between stns. Cinderlee branch. Leicester, Humberstone Rd. siding portion bridge 13. St. Pancras goods depot siding bridge 10. Poplar Docks Swing bridge 276. Bow, sidings portion bridge 249. Gas Works. Longton, sidings portion bridges 12 & 13. Buckley Junc. to Connah's Quay Docks. Ffrwd Junc., Brynmally Colliery. Connah's Quay S. Junc. to Connah's Quay W. Junc. And on the electrified portion of the Manchester & Bury line & on the Tottington Branch. If attached to fast passenger trains must not exceed 10 m.p.h. through the following tunnels etc.</p>	<p>Prohibited on the following branches:- Lambourn Valley. Wallingford. Abingdon. Watlington. Fairford. Brentford. Uxbridge, Vine St. Faringdon. Highworth. Malmesbury. Camerton. Calne. Blagdon. Thornbury. Culm Valley. Cwmffrwd. Golynos. Nettlefolds Llantrisant Common. Mountain. Burry Port & Cwmawr. Trimsaran Mineral. Kidwelly. Criggion. Clee Hill. Pontcysyllte. Stirchley. Porthywaen. Nantmawr. And on the following lines:- Ashton Junc. to Canons Marsh. Wapping Wharf to Ashton Swingbridge Junc. Clifton Bridge to Portishead. Llynclys Junc. to Llangynog. Llanymynech to Llanfyllin. Abermule to Kerry. Moat Lane to Talyllia Junc. Cemmes Rd. to Dinas Mawddwy. Dovey Junc. to Barmouth Junc. Barmouth to Afon Wen. Trawsfynydd to Blaenau Festiniog. Lampeter to Aberayron. And on certain curves & sidings at the following docks. Millbay. Newport. Cardiff. Barry. Swansea. In addition, these vehicles are subject to the siding prohibitions applicable to wagons classified B.I. as set out in the Commercial Superintendent's Schedule headed "Continental Train Ferry Wagons" issued in December 1948. Screw couplings to be slackened when negotiating curves in the dock areas.</p>	<p>Prohibited on:- lines classified as R.A. I.</p>			<p>Prohibited on:- Baker St. to Finchley Rd. & lines other than surface lines.</p>
<p>Kilsby down line. Sough down line. Hampstead Heath both lines. Stalybridge down & bridges 32 & 28 on up line. Millwood down line.</p>	<p>Beechwood down line. Kirkdale down fast. Macclesfield up line. Kings Cross. Blea Moor down. Helm down line. Lydgate both lines.</p>					

SOUTHERN.	LONDON MIDLAND.	WESTERN.	EASTERN.	NORTHEASTERN.	SCOTTISH	L.T.E.
<p>Prohibited on the following lines:- Tonbridge to Battle via Robertsbridge. I.O.W. Rlys. K.&E. Sussex. East Kent. Newhaven Swing bridge. And on the following branches:- Lyme Regis. Hayling Island.</p>	<p>Prohibited on Henlow Goods Line back of station. Springs Branch L.N.W. Wigan area. Luton Corporation Highways Depot sidings Certain sidings at Burton-on-Trent. Derwent Junc. to Keswick. Horrocksford branch. Helsby W. Cheshire Junc. bridge 195. Newfields Colliery, Tunstall bridge 1. Denby, portion bridges 15 & 15A. bridge Liverpool, N. Docks Gulf Colonnade & Regent St. lift Rodford to Bulwell all siding bridges between stations. St. Pancras Goods Depot bridge 10. Longton, portion bridges 12 & 13. Camden Coal Yard 17 timber openings. Mansfield Woodhouse, portion bridges 41 & 42. Broad St. Station, bridges 1, 2 & 3. high level. Connahs Quay Docks to Buckley Junc. Poplar High St. Bridge to Poplar Docks. Blaenau Festiniog, bridge 68. Haydon Sq. Depot Parsley Hay to Whatstandwell Junc. Cromford. Not to travel over coal drops & tips. If attached to passenger trains, not to exceed 10m.p.h. thro' the following tunnels etc. Kilsby down, Walton to Rugby. Beechwood down, Tile Hill to Berkswell Junc. Kirkdale No. 1. fast down, Manchester to Liverpool Exp. Sough down, Bolton to Blackburn. Macclesfield up, Prestbury to Hibel Rd. Hampstead Heath both lines, to Finchley Rd. Kings X, St. Pauls Rd. Junc. to Kings X, Met. Blea Moor down, to Dent Head. Helm down, Crosby Garratt to Ormside. Stalybridge down & bridges 32 & 28 up, Stalybridge Junc to Ashton Charlestown. Millwood down, Hallroyd Junc. to Eastwood S. B's. Lydgate both lines, Greenfield Junc. to Grotton.</p>	<p>Prohibited on the following branches:- Abingdon, Wallingford. Culm Valley. Brixham. Chard. Mortonhamstead to Bovey. Ashburton. Goonbarrow. Carbean. Wenford. Callington. Torrington. Hayle Wharves Junc. to Penpol siding and beyond weighbridge, Harvey's siding. St. Denis-slip siding. Cattewater to beyond tunnel. Abersychan & Talywain. Golynos. Clee Hill. Stirchley. Pontcysyllte Acrefair to Rhos. Criggion. And on Didcot Provender Stores Sidings- Garden or Back Rd. & connection to New Rd. Bridgewater Docks. Dunball Wharf. Burngullow, Parkyn & Peters siding. Falmouth Docks sidings. Dowlais I.C.I. Works, Outside reception sidings. Caerphilly Tar Dist. plant at Wernddu, Outside rec.sds. Burry Port & Gwendraeth Valley Rly. & branches. Inwards Shed, Hockley. Portmadoc, Cattle Pen siding. Brecon, Coal Wharf siding. In addition, these vehicles are subject to the siding prohibitions applicable to wagons classified C.I. as set out in the W.R. Commercial Superintendent's Schedule headed "Continental Train Ferry Wagons" issued in December 1948. Screw couplings to be slackened when negotiating curves.</p>	<p>Prohibited on lines other than R. A. 2. & over & on ex L.M.R. lines Brampton Chesterfield. Lincoln Goods Yard bridges 76 77 78 & 79. and on ex N.E.R. lines Hoxey Junc. to Crowle, Axholme. Epworth to Hatfield Moor.</p>	<p>Prohibited on lines R. A. 1 & 2. with the exception of:- Manors North to Argyle St. Scarborough, Gallows Close to Whitby, Prospect Hill Junc.</p>	<p>Prohibited on the following branches:- Auchmuty. Souterhouse. Gartverrie. Mayfield Colliery. Lauder. Dornock. Gifford. St. Combs. Carmyllie. and on Greenock Regent St. & Arthur St Depots.</p>	<p>Prohibited on lines other than surface lines, with the exception of Central line extension East of Leytonstone & Northern line extension North of E. Finchley.</p>

These wagons operate between Zeebrugge & Whitehaven. L.M.R.

C.5146.



TANK WAGON - P.O.
AZOTE RENORY - OUGREE.

WAGON No. 510045.

BUFFER DIA.
WESTINGHOUSE & SIDE LEVER H' BRAKE.

T. C. Q.

TARE.
LOAD.

QUANTITY:- 1.

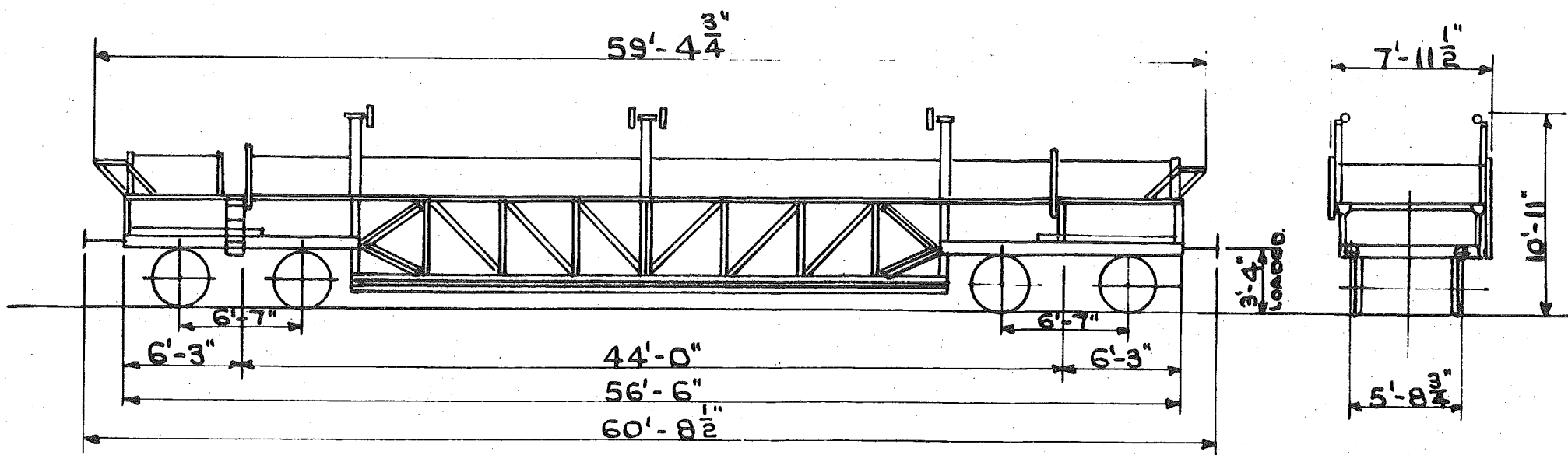
CAN OPERATE FROM - MORRIS COWLEY, LONGBRIDGE & DAGENHAM DOCK STATIONS
 TO THE DOCK AREAS AT THE FOLLOWING POINTS:-
 CARDIFF, DOVER, GRIMSBY, GOOLE, GRANGEMOUTH, GLASGOW, HARWICH,
 HARTLEPOOLS, HULL (KING GEORGE, ALEXANDRA & ALBERT), IMMINGHAM,
 LONDON, LIVERPOOL (INCLUDING BIRKENHEAD) MANCHESTER, MIDDLESBOROUGH,
 NEWPORT, SOUTHAMPTON AND SWANSEA.

C. 5179.

REVISED JUNE 1958.

REVISED JUNE 1959.

FOR RESTRICTIONS SEE SEPARATE SHEET.



TWO TIER TRUCK FOR MOTOR CARS.
BRITISH. M.A.T. TRANSPORT LTD.

HAND BRAKE - SIDE LEVER
 TARE 25 T. 10 C.
 LOAD 12 T. 10 C.

WAGON No. 501100 COMPRESSED AIR BRAKE & VACUUM THRO' PIPE. WAGON No 501101 TO 501112 COMPRESSED AIR BRAKE & VACUUM BRAKE

QUANTITY: 13.

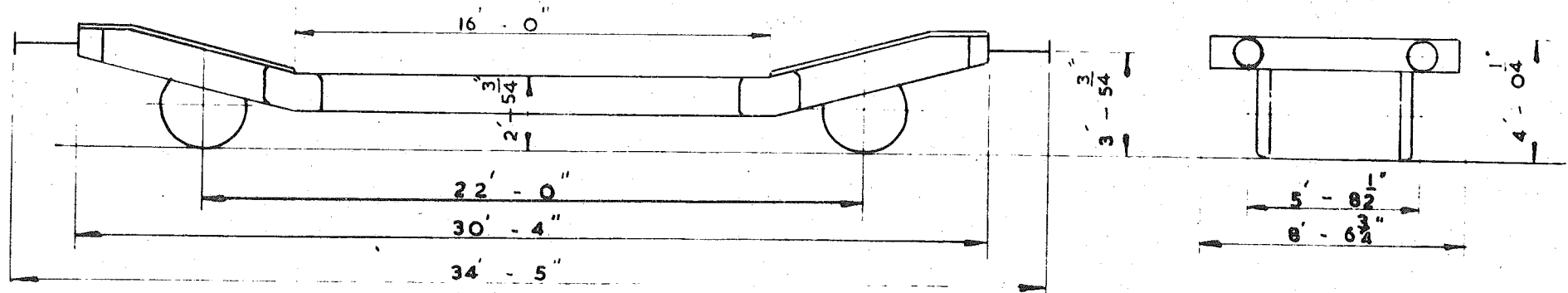
RESTRICTIONS:- AS PER R.C.H. PINK PAMPHLET & APPENDICES TO WORKING TIME TABLES ETC. & THE FOLLOWING ADDITIONAL REGIONAL RESTRICTIONS.

C.5179.

SOUTHERN	LONDON MIDLAND.	WESTERN.	EASTERN.	NORTH EASTERN	SCOTTISH	L.T.E.
<p>PROHIBITED ON THE FOLLOWING ISLE OF WIGHT LINES. NEOVIJ JUNC.^N UP BAY PLATFORM. CHARD JUNC.^N BRANCH PLATFORM CROWHURST. UP BAY PLATFORM</p>		<p>PROHIBITED ON THE FOLLOWING:- PLYMOUTH, MILLBAY DOCKS (SUBJECT TO TEST ROUND SHARP CURVES)</p>			<p>PROHIBITED ON THE FOLLOWING AUCHMUTY BRANCH. SOUTHER HOUSE BRANCH. GARTYKERRIE BRANCH MONTROSE HARBOUR BRANCH GREENOCK, REGENT STREET, BETWEEN DEPOT. REDELLINGBURN POWER STATION. GREENOCK, ARTHUR STREET, BETWEEN CARTDYKE JN & VICTORIA HARBOUR.</p>	<p>PROHIBITED WITH THE EXCEPTION OF THE FOLLOWING:- METRO. LINES WIDENED LINES PRAED ST. JUNC.^N TO FARRINGTON (CIRCLE LINES) EAST LONDON LINE, HAMMERSMITH CITY LINES. CENTRAL LINE, OPEN SECTIONS EAST OF LENTON. NORTHERN LINE NORTH OF PARK JUNCTION</p>

C. 5181

REV 3



MACHINERY WAGON - BRITISH

G.A. Drg. No SW/DN 20138

G.A. Drg. No SW/DN 20606

- (OLD) WAGON Nos. G.B. 904534 to G.B. 904541 Vacuum (& Compressed air thro pipe.)
- (NEW) WAGON Nos. Uti. 21 70 909 6037 to 6044
- (OLD) WAGON Nos. G.B. 904662 to G.B. 904674 Compressed air thro pipe.
- (NEW) WAGON Nos. Uti. 21 70 909 6045 to 6057

HAND BRAKE:- Side lever,

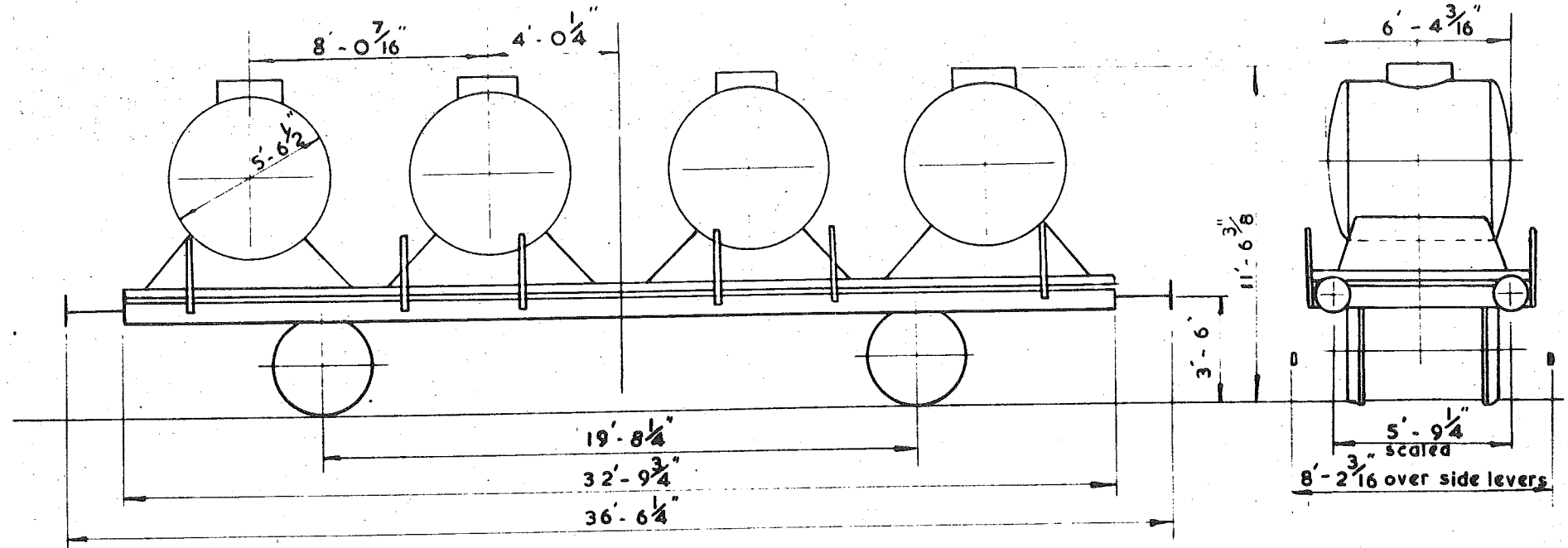
TARE:- 13 t - 12c - 3q.

LOAD:-

A	B	C
17 t. 12 c.	21 t 18 c.	25 t.

QUANTITY 21.

C. 5185



TANK CONTAINERS ON OPEN WAGON
FRENCH

WAGON No. 590448 Compressed air & Vacuum brakes
WAGON Nos. 590449 to 590451 Compressed air (Vacuum thro' pipe)

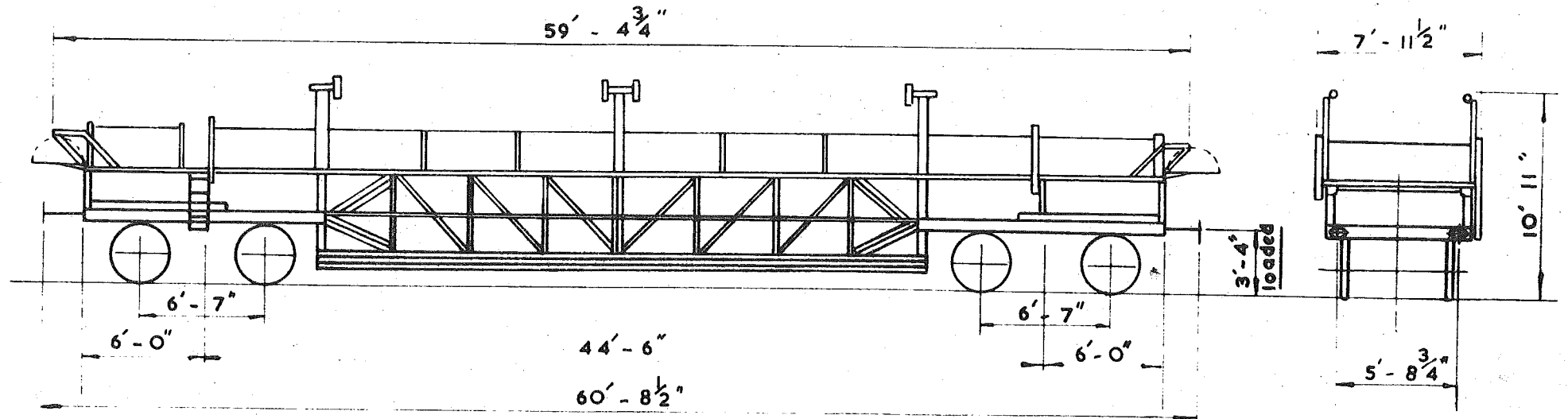
HAND BRAKE:- Screw & Side lever
TARE:- 15 t. Oc.
LOAD:- 12 t. Oc.

QUANTITY 4

G. A. Drg. Nos. 13231 & 952

C. 5186

REV FEB. '65



TWO TIER TRUCK FOR MOTOR CARS - BRITISH
MAT. TRANSPORT LTD.

VEHICLE Nos. 501113 to 501124

POWER BRAKE:- Compressed air & Vacuum
HAND BRAKE:- Side lever
TARE:- 25 t. - 10 cwt.
LOAD:- 13 t. - 0 cwt.

QUANTITY 12

GA Drg. No. T 7569/1

RESTRICTIONS:- AS PER R.C.H. PINK PAMPHLET & APPENDICES TO WORKING TIME TABLES, ETC. & ADDITIONAL REGIONAL RESTRICTIONS

C. 5186

SOUTHERN	LONDON MIDLAND	WESTERN	EASTERN	NORTH EASTERN	SCOTTISH	L. T. E.
<p>Prohibited on the following:- Isle of Wight lines; Yeovil Junction, up bay platform; Chard Junction, branch platform; Crowhurst, up bay platform; Torrington, up platform road; Wenford Bridge line; Stonehouse Pool line; Barnstable Junction to Ilfracombe.</p>		<p>Prohibited on the following:- Plymouth, Millbay Docks (subject to test round sharp curves).</p>			<p>Prohibited on the following:- Auchmuty branch; Souterhouse branch; Gartverrie branch; Montrose Harbour branch; Greenock Regent Street between depot & Dellingburn Power Station; Greenock, Arthur Street between Cartsdye Junction & Victoria Harbour.</p>	<p>Prohibited with the exception of the following:- Metro lines; widened lines; Praed Street Junction to Farringdon circle lines, Central line, open sections east of Leyton; Northern line North of Park Junction. East London Line Hammersmith & City Line</p>

LOAD

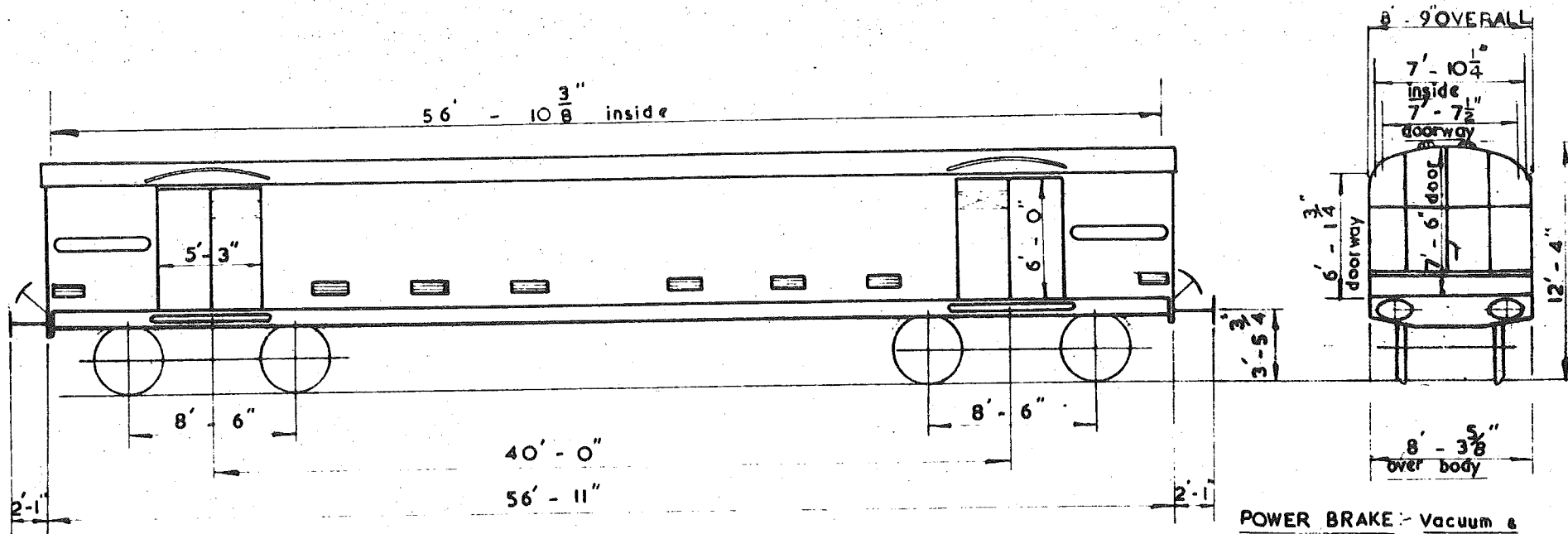
	A	B	C
	14 t	14 t	
S	14 t		
SS	14 t		

C.5187

REV. FEB 55

JULY 66

Double doors
both ends



SCENERY VAN - BRITISH

- POWER BRAKE: Vacuum & Compressed air.
- HAND BRAKE: Screw.
- TARE: 29 t.
- LOAD: see table.

QUANTITY 4

(OLD) VEHICLE Nos. B.889200 to B.889203

(NEW) VEHICLE Nos. Huccfkqrs 21 70 239 7000 to 7003

G.A. Drg. No. 5C/ES. 2144. BR. Dia 292

RESTRICTIONS: As per R.C.H. Pink Pamphlet & Appendices to Working Time Tables etc. & the following additional Regional Restrictions

C 5187

L.T.E.

SOUTHERN

Tonbridge to
Battle.
Isle of Wight
lines.

LONDON MIDLAND

WESTERN

Prohibited on the following:-
Culm Valley Branch. Filleigh Goods Shed Line.
Wadebridge Quay Sidings. Wenford Branch.
Cattewater Branch beyond tunnel. Millbay Docks
-curve behind behind Blacksmiths Shop.
-curve around Graving Dock. -connection to
Trinity Pier sidings at Fowey, No 4 Jetty to
Carne Point. Ystrad Mynach Loading Dock.
Bargoed Loading Dock. Pontllynn Loading Dock.
Whitchurch Loading Dock. Whitchurch Cattle
Pens Siding. Whitchurch Siding at back of Up
Platform. Penarth Town Loading Dock. Dowlais
Central Loading Dock. Llantwit Major Cattle
Pens Siding. Llancaiach Cattle Pens Siding.
Pontypridd Cattle Pens Siding. Llanelly & Mynydd
Mawr Branch. Burry Port & Gwendraeth Valley
Line & Branches. Llanelly - Llanelly Dock Jet.
to North Side & Repair Siding. Tenby - Viaduct
Siding. Swansea Victoria - Siding at back of
Up Platform. Tetbury Branch. Blakeney Branch.
Severn & Wye - Sharpness to Miery Stock. -
Tufts Jct. to Princess Royal Colliery. - Tufts
Jct. to Pillowell. Lidney Docks Line. Coleford
Branch. Clee Hill Branch. Criggion Branch.
Pontcysyllte Branch.

EASTERN

NORTH EASTERN

Prohibited on the
following:-
Swine Lodge Incline
Charlaw & Sacriston Rly.
Seaham - Swine Lodge
Incline.
When fully loaded,
prohibited from working
over the following:-
Selby (West) to Cawood.
North Dock Branch -
Sunderland.
Dunston Staiths
South Blythe Staiths
Tweedmouth Dock Branch
North Blythe Staiths

SCOTTISH

Totally prohibited on
the following:-
Auchmuty Branch
Souterhouse Branch
Gartverrie Branch
Greenock - Arthur Street.
Greenock - Regent Street.

Prohibited on tubes

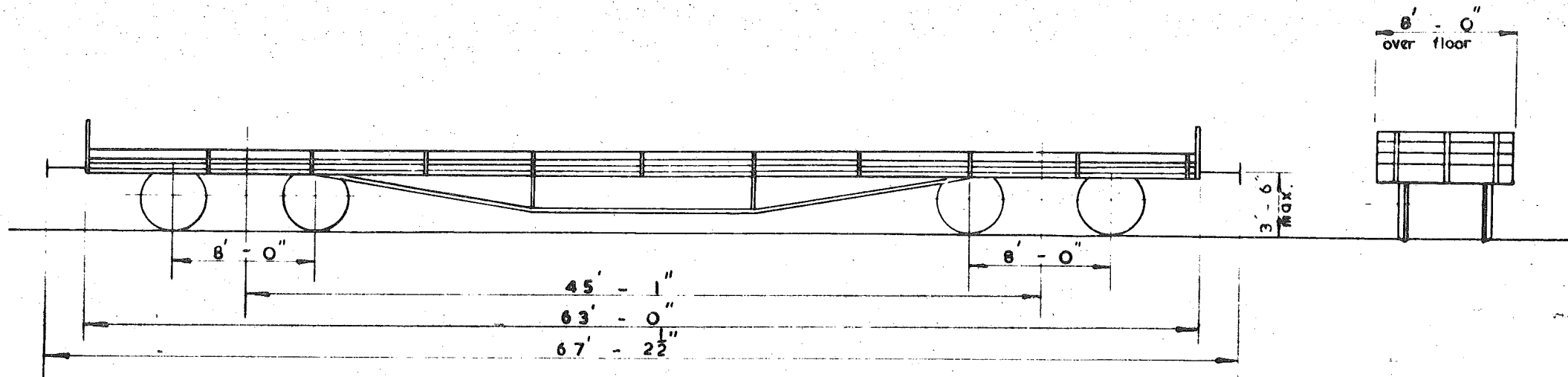
RESTRICTIONS. As per R.C.H. Pink Pamphlet & Appendices to Working Time Tables etc. and the following additional Regional Restrictions

C.5196

EASTERN	SCOTTISH	LONDON MIDLAND	SOUTHERN	WESTERN	NORTH EASTERN	L.T.E
		<p>Subject to axle loadings being regulated to accord with the published schedules of permitted weights</p>	<p>Prohibited on the following: Tonbridge to Battle Isle of Wight line, apart from sidings</p>	<p>Prohibited on the following: Plymouth Millbay Docks:- Curve behind Blacksmith's shop Curve around Graving Dock Connection to Trinity Pier Gloucester Llanthony Docks:- to work on running lines only, not to proceed beyond 1 mile past. Gloucester High Orchard Docks:- to work on running lines only, not to proceed over road level crossing at Canal end of High Orchard Yard. Severn & Wye Joint Lines:- to work between Berkeley Road & Park End only.</p>	<p>Prior notice of routes to be submitted.</p>	

In addition there are 140 more vehicles Nos. 501125 to 501199 & 501500 to 501564 to this Diagram but which, because of the tyre width are not acceptable on the Continent without prior acceptance having been obtained.

C. 5196
REV 4



OPEN WAGON - CARFLAT

BRITISH MAT. TRANSPORT LTD.

VEHICLE Nos. 501585 to 501624

New Nos. 21 70 049 6 000 - 6059.

Type SFR

POWER BRAKE Vacuum (Compressed air thro' pipe)

HAND BRAKE:- Side lever

TARE:- 20 tons 16 cwt

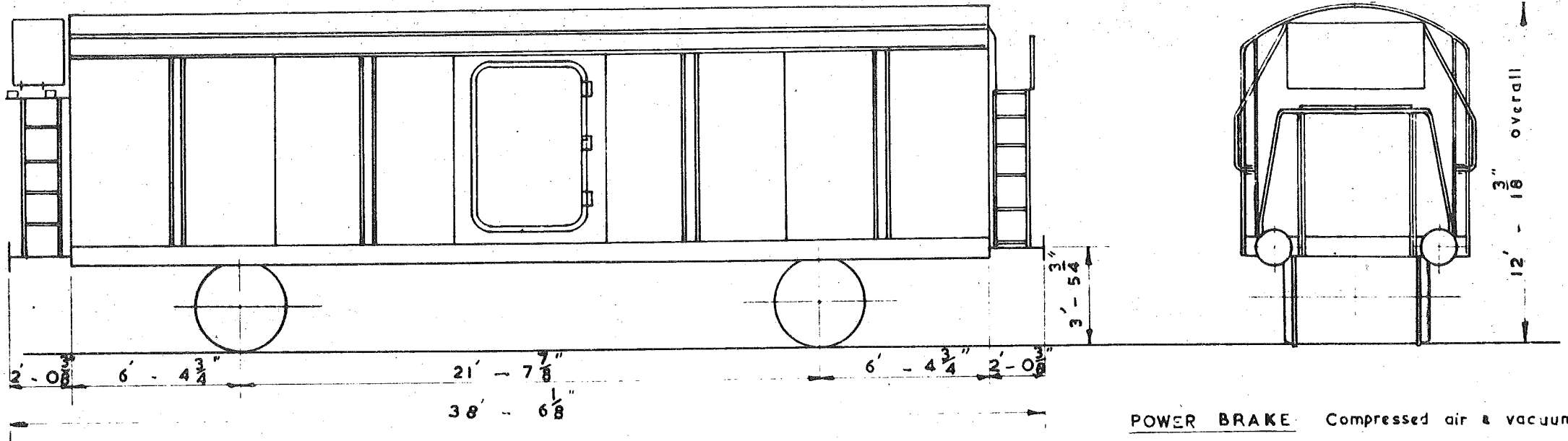
LOAD:-

R	B	C
10T 14c		12T

QUANTITY 60

G.A. Drg. No 501126/1a 2 & 3

C. 5199



REFRIGERATOR WAGON - SPANISH
(TRANSFESA)

FITTED WITH MECHANICAL REFRIGERATOR

G.A. DRAWING No. 01

VEHICLE Nos 520102 to 520106

POWER BRAKE: Compressed air & vacuum.

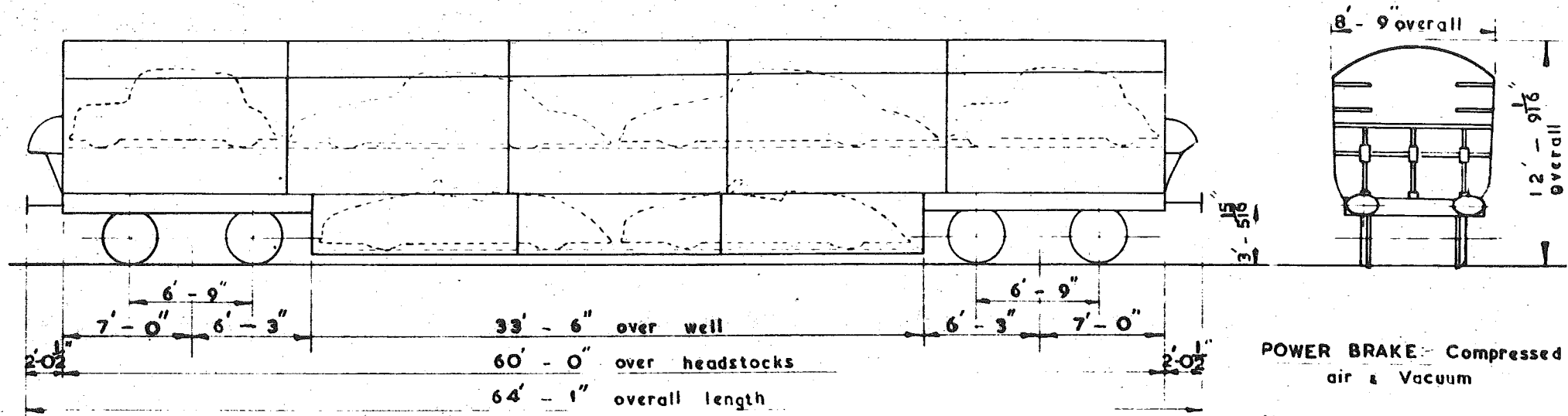
HAND BRAKE: Side lever

TARE: 16 ton. 12 cwt.

LOAD: 18 ton. 18 cwt.

QUANTITY 5

C.5200



POWER BRAKE: Compressed air & Vacuum

HAND BRAKE:

TARE: 32 tons

LOAD: 12 tons 10cwt.

TWO-TIER COVERED CAR TRANSPORTER.

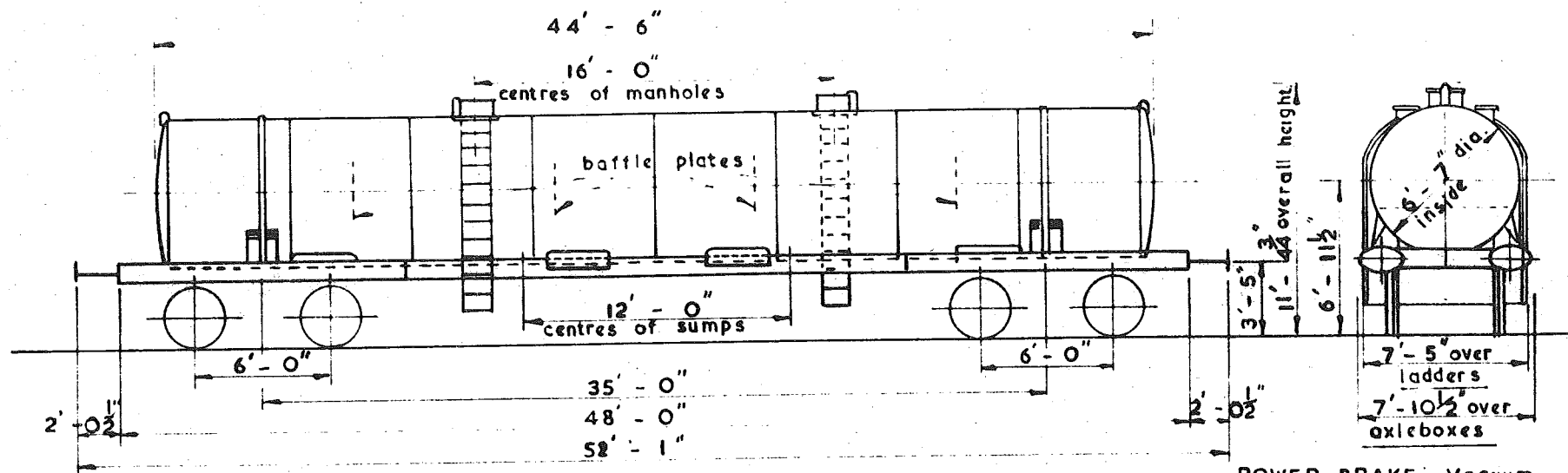
BRITISH

VEHICLE Nos. E 96286 to E 96299

G.A. Drawing No. DN 30539

QUANTITY 14

CAPACITY 9625 Gallons



TANK WAGON

BRITISH (H. DIAPER & CO.)

POWER BRAKE: Vacuum & (Compressed air pipe)

HAND BRAKE: Screw

TARE: 23 ton. 10 cwt.

LOAD: 40 ton. 0 cwt.

QUANTITY 3

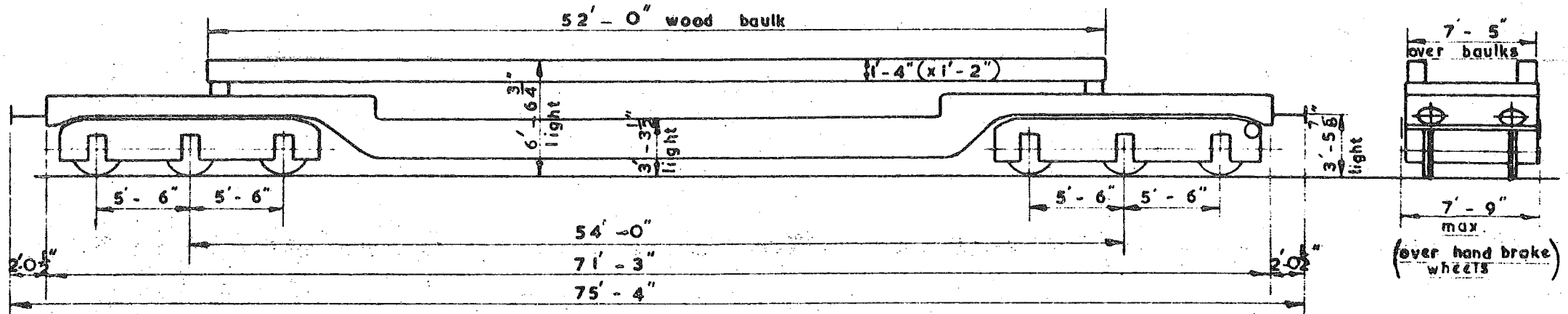
VEHICLE Nos. 502100 to 502102

BR Dia. No 300

G.A. Drg. No DE 58731

To be worked subject to the conditions laid down in
booklet 3 BR. 20246 instructions for exceptional loads

C. 5205



OPEN WAGON - BRITISH

WELTROL E.J.C.

VEHICLE Nos. ~~GB 901200 to GB 901205~~

SI 70 229 6 000 to 005

POWER BRAKE: Vacuum (a Compressed air through pipe)

HAND BRAKE: Screw.

TARE: with baulks 47 t. - Oc (est.)
without baulks 44 t. - Oc

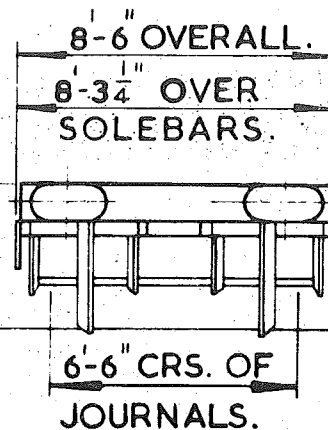
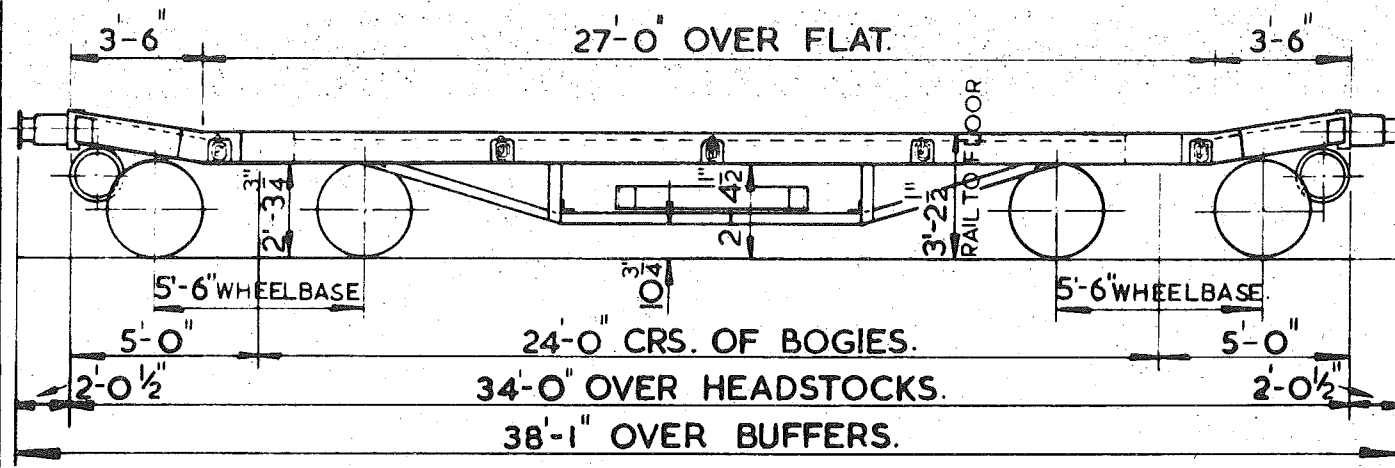
LOAD: 55t. - Oc. over full length
40t. - Oc. over 12'-0" central space.

G.A. Drg. No. E.S. 11272.

QUANTITY 6.

C. 5212

REV.



FLOOR AREA. 223 SQ. FT.

FLOOR. WOOD.

POWER BRAKE.
VACUUM THROUGH PIPE.
AIR THROUGH PIPE.

HANDBRAKE.
HANDWHEEL.

TARE. 15T. 3C.

LOAD.

A	B	C
38T0C	38T0C	38T0C

	H	M	L	E
TONS	54	39	24	16
V.B.	0	0	0	0
AB.	0	0	0	0
RA.	1	1	1	1
MAX SPEED	50	50	50	50
EXCESS LENGTH	9			

TYPE:- BRITISH B.R.

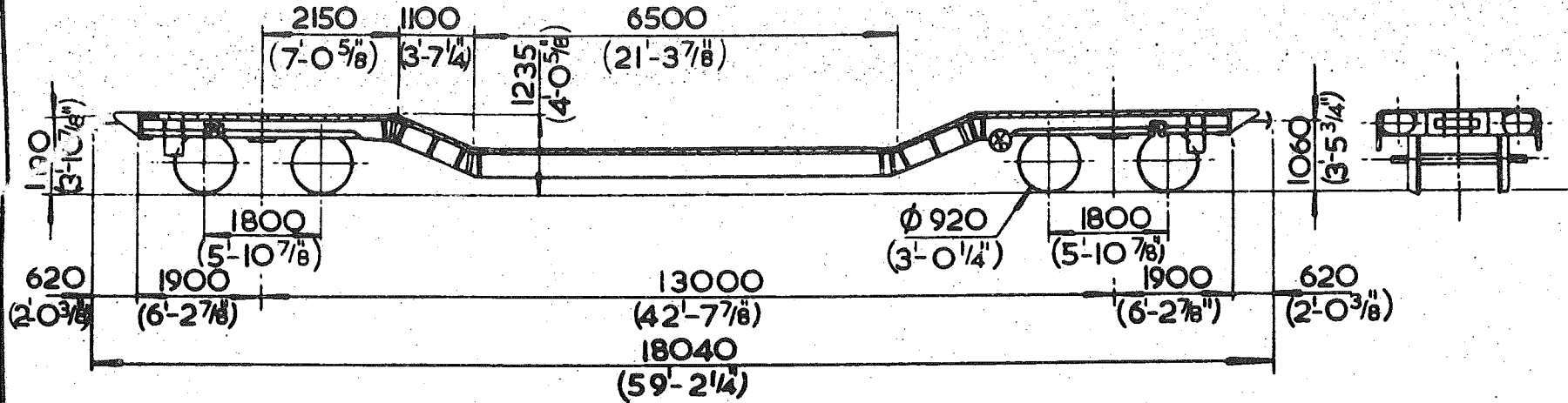
VEHICLE No:- 21 70 9299001

QTY. 1

RESTRICTIONS :- AS FOR S.F.V. VEHICLES.

C. 5213

REV. 1



FLOOR AREA. 36.45m²
392.2ft.²

FLOOR AREA IN WELL 14.98m²
161.3ft.²

FLOOR. WOOD

POWER BRAKE.

COMPRESSED AIR
VACUUM THRO' PIPE

HANDBRAKE.

HANDWHEEL

TARE. 26 T-IIC

LOAD.

	A	B	C
	33	33	33
S	33	33	

WELL WAGON:- FRENCH (S.N.C.F)

TYPE:-Ueriks

VEHICLE No:- 21 87 939 7 995 to 999

	H	M	L	E
TONS	55	47	35	27
V.B.	0	0	0	0
A.B.	10	10	5	5
R.A.	1	1	1	1
MAX SPEED	62	62	62	62
EXCESS LENGTH	8			

QTY. 5

3