

DISTRICT CIVIL ENGINEER. GLOUCESTER.



22 MAR 1972

BRITISH RAILWAYS WESTERN REGION

RAIL TRAVELLING CRANE DIAGRAMS

© COPYRIGHT NOTICE

This PDF file has been created from the original book with permission of BRB (Residuary) Ltd, who retains copyright in the original document.

The scanned images of this book were provided by Simon Harding. This PDF copy by David Faulkner, 2012

Individuals may: use, retain and print out this PDF version for their private information or for that of their non-commercial enthusiast society or railway club.

This document and any copies produced from it in any form may not be sold or lent for any payment in any form other than to cover copying or transmission costs. No reproduction permitted in any other form or circumstance without prior permission from the original copyright holder

PLANT ENGINEERS OFFICE

C.M.&E.E.'S DEPT.

SWINDON

FEB. 1972

RAIL TRAVELLING CRANES.

AXLE WEIGHTS ARE SHOWN FOR CRANE IN FULL WORKING ORDER.

1 WEIGHT ON AXLE WITH JIB SUSPENDED.

2 WEIGHT ON AXLE WITH JIB RESTING AND CRANE IN TRAIN ORDER.

FACING PAGE GIVES A COPY OF THE LOAD PLATE AND/OR CAUTION PLATE AS ATTACHED TO THE CRANE.

CAUTION

TO BE SHOWN WITH CARE. MINIMUM RADIUS TO BE NEGOTIATED : 5 CHAINS.

BEFORE LIFTING JIB FROM MATCH TRUCK, SPRING STOPS MUST BE SCREWED DOWN HAND TIGHT ON TO SPRINGS AND NOT MOVED FROM THIS POSITION UNDER ANY CIRCUMSTANCES. THE JIB CAN THEN BE RAISED FROM THE MATCH TRUCK AND TAIL LOCKING SCREWS RELEASED.

IF CRANE IS STANDING ON CURVE, TAIL LOCKS MUST BE RELEASED FIRST, SUPERSTRUCTURE SLEWED INTO LINE WITH JIB, AND JIB RAISED FROM MATCH TRUCK. TRAVEL CLUTCH IN CRANE CAB MUST BE ENGAGED AND BOTH HANDWHEELS ON CRANE CARRIAGE ROTATED TO THE "IN" POSITION.

BEFORE TRAVELLING IN TRAIL, RELIEVING BOGIES MUST BE ATTACHED TO CRANE, JIB LOWERED ONTO MATCH TRUCK AND TAIL LOCKING SCREWS ENGAGED, SLEWING SUPERSTRUCTURE IF NECESSARY, SPRING STOPS MUST BE SCREWED UP CLEAR OF SPRINGS AND TRAVEL GEAR DISENGAGED.

WHEN WORKING ON BLOCKED DUTIES OUTRIGGERS MUST BE PULLED OUT TO MAXIMUM POSITION AND JACKS TIGHTENED. CORNER JACKS MUST ALSO BE TIGHTENED, BUT CARE MUST BE TAKEN NOT TO PULL ANY JACKS DOWN EXCESSIVELY. ANY ADJUSTMENT MADE AFTER LIFTING SHOULD ONLY BE TO TAKE UP ANY CONSOLIDATION OF THE GROUND.

TO ENSURE COMPLETE CONTROL OF LOAD BEING LIFTED, MAIN HOIST - AUXILIARY HOIST CLUTCH MUST NOT BE DISENGAGED WHILE LOAD IS SUSPENDED FROM THE RESPECTIVE HOOK.

TAKE WEIGHT OF LIFTING BEAM IS 2 TONS 4 CWT AND CAN ONLY BE HANDLED BY CRANE AT A RADIUS IN EXCESS OF 35'-0" (MAIN HOOK) IF JIB IS DIRECTLY DOWN TRACK.

RADIUS	MAIN HOIST	
	HT. OF LIFT	OVERALL CRANE HT.
40' 0"	32' 0"	45' 0"
35' 0"	36' 9"	49' 10"
30' 0"	39' 6"	53' 3"
25' 0"	41' 9"	56' 0"
20' 0"	43' 6"	58' 0"
18' 0"	43' 9"	58' 9"
AUXILIARY HOOK		
43' 6"	34' 0"	45' 5"
20' 8"	49' 7"	58' 9"

MAXIMUM SPEED 60 M.F.H.

LOAD PLATE

THIS CRANE IS REGISTERED TO LIFT AND SLEW WITH EXTENSION GIRDERS FULLY OUT AND CARRIAGE CORNER JACKS DOWN.

MAIN HOIST

RADIUS	LEVEL TRACK	2" SUPERELEVATION
18' 0"	75 TONS	NOT TO BE USED
20' 0"	65 TONS	64.25 TONS
25' 0"	40 TONS	39.75 TONS
30' 0"	30 TONS	29.50 TONS
35' 0"	20 TONS	19.75 TONS
40' 0"	15 TONS	14.75 TONS

AUXILIARY HOIST

43' 6"	12 TONS	11.75 TONS
--------	---------	------------

FOR MOVING SLOWLY THIS CRANE IS REGISTERED TO LIFT AND SLEW

AUXILIARY HOIST

20' 8"	12.00 TONS	NOT TO BE USED
22' 9"	10.00 TONS	9.50 TONS
27' 10"	6.50 TONS	6.00 TONS
33' 0"	4.00 TONS	3.75 TONS
38' 3"	2.25 TONS	2.00 TONS
43' 6"	1.00 TONS	0.75 TONS

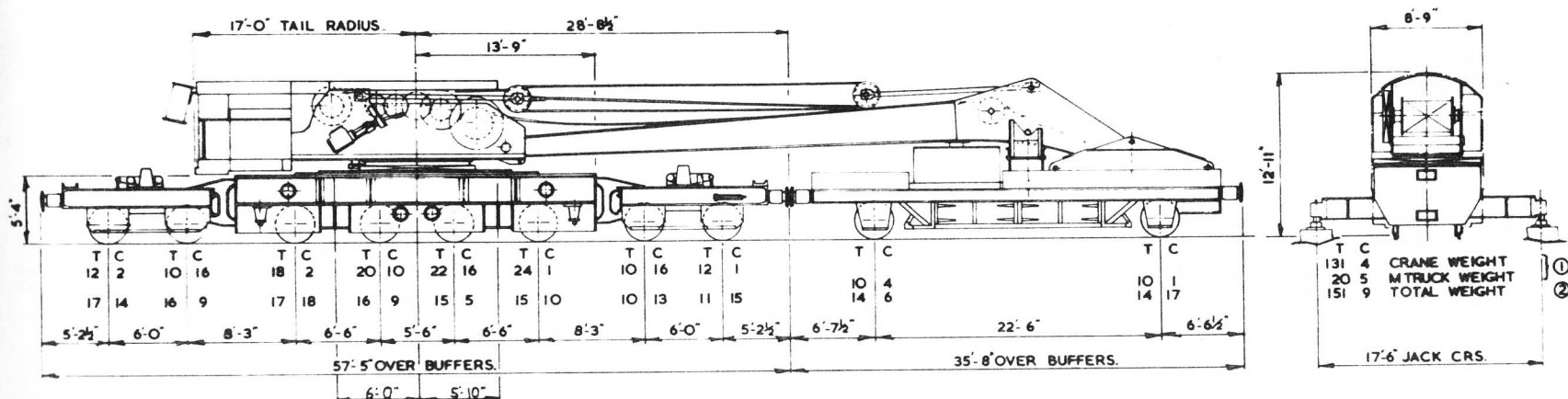
MAIN HOIST

18' 0"	14 TONS	NOT TO BE USED
--------	---------	----------------

WHEN STANDING ON A SUPERELEVATED TRACK, THE CRANE MUST NOT WORK LADEN OR UNLADEN AT LESS THAN THE FOLLOWING RADII:-

2" SUPERELEVATION	MAIN HOIST	NOT LESS THAN	20'-0" RADIUS
2" SUPERELEVATION	AUX HOIST	NOT LESS THAN	22'-9" RADIUS

THE RADIUS FOR ALL SUPERELEVATION DUTIES IS MEASURED WITH THE JIB AT RIGHT ANGLES TO THE CARRIAGE AND POINTING TOWARDS THE LOW SIDE OF THE TRACK.



MAXIMUM SPEED IN TRAIN 60 M.P.H.

CRANE No. 141.142.

COWANS SHELTON

75 TON STEAM TRAVELLING CRANE

CAUTION

TO BE SHUNTED WITH CARE.

SPRING RELIEVING SCREWS TO BE SET BEFORE JIB IS LIFTED OFF MATCH WAGON AND RELIEVING BOGIES RELEASED WHEN STATIONARY WITH EXTENSION GLIDERS FULLY OUT AND CLIPS SECURED TO RAILS THIS CRANE IS REGISTERED TO LIFT AND SLEW:-

45 TONS at 20 ft. RADIUS
 25 " " 30 ft. "
 16 " " 40 ft. "

FOR MOVING SLOWLY WITH LOADS THIS CRANE IS REGISTERED TO LIFT AND SLEW:-

15 TONS at 20 ft. RADIUS
 8 " " 30 ft. "
 4.5 " " 40 ft. "

TAIL JACKS TO BE ADJUSTED BEFORE JIB IS LOWERED ON MATCH WAGON.
 SPRING RELIEVING SCREWS MUST NOT BE SCREWED FREE UNLESS JIB IS ON MATCH WAGON AND RELIEVING BOGIES ADJUSTED.
 THESE INSTRUCTIONS ARE FOR WORKING ON 'A' LEVEL ROAD.

MINIMUM CURVE - 5 CHAINS.

RADIUS	HT. OF LIFT	OVERALL CRANE HT.
40' 0"	22' 0"	35' 0"
30' 0"	32' 6"	44' 3"
20' 0"	38' 0"	48' 6"

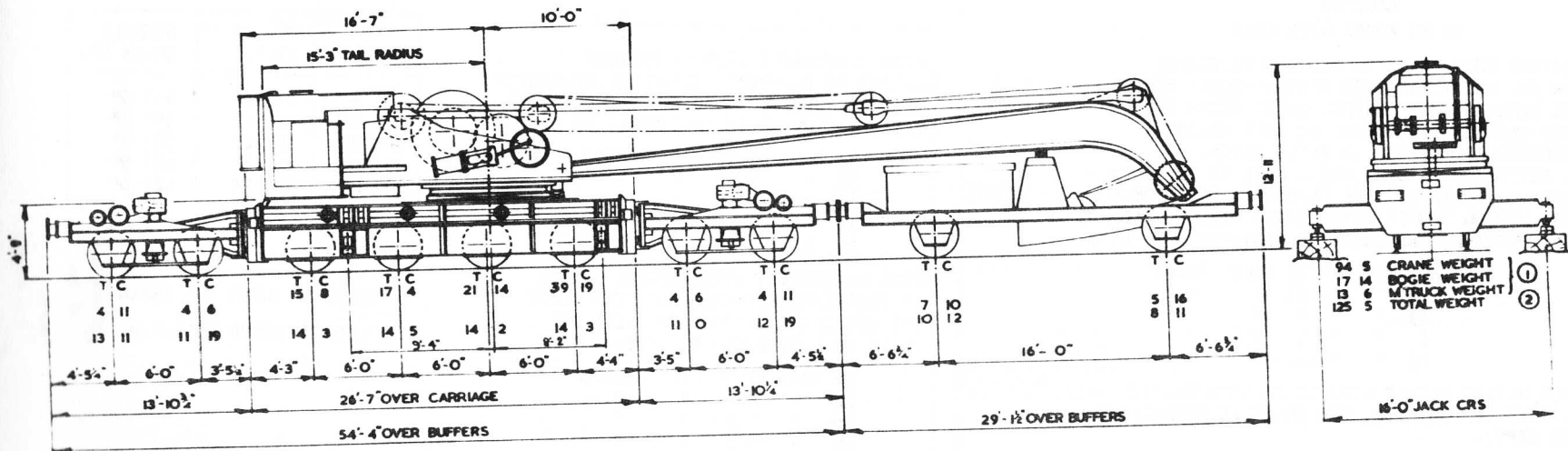
FOR WORKING ON SUPERELEVATED TRACK THIS CRANE IS REGISTERED TO LIFT AND SLEW UNDER FREE ON RAIL CONDITIONS:-

SUPERELEVATION	RADIUS				
	22' 0"	24' 0"	26' 0"	30' 0"	40' 0"
1 IN.	12.75 T	11.4 T	10.1 T	7.7 T	4.45 T
2 "	12.4 T	11.0 T	9.7 T	7.35 T	4.4 T
3 "		10.6 T	9.45 T	7.1 T	4.3 T
4 "			9.2 T	6.85 T	4.2 T

FOR WORKING ON SUPERELEVATED TRACK UNDER BLOCKED CONDITIONS THIS CRANE IS REGISTERED TO LIFT AND SLEW:-

SUPERELEVATION	RADIUS				
	22' 0"	24' 0"	26' 0"	30' 0"	40' 0"
1 IN.	39.0 T	35.0 T	31.0 T	24.5 T	15.6 T
2 "	38.0 T	34.5 T	30.0 T	24.0 T	15.25 T
3 "		34.0 T	29.5 T	23.75 T	15.1 T
4 "			29.0 T	23.5 T	15.0 T

THE RADIUS FOR ALL SUPERELEVATED DUTIES IS MEASURED WITH JIB ON LOW SIDE OF TRACK. DUE TO BEING TAIL HEAVY THE CRANE MUST NOT WORK LADEN OR UNLADEN WITH THE JIB AT LESS THAN THE MINIMUM RADIUS SHOWN.



MAXIMUM SPEED IN TRAIN 45 M.P.H.

CRANE No. 16, 18, 19, 151

RANSOMES & RAPIER.

45 TON STEAM TRAVELLING CRANE.

33 TON STEAM CRANE**CAUTION****TO BE MOVED WITH CARE**

BEFORE THIS CRANE IS ALLOWED TO TRAVEL ON THE MAIN LINE, THE SPRING BLOCKS MUST BE REMOVED, JIB LOWERED ON TO MATCH TRUCK AND SECURED BY CHAINS, BALANCE WEIGHT REMOVED AND PLACED IN MATCH TRUCK.

4 EXTENSION GIRDERS MAY REMAIN IN POSITION. SPRING BLOCKS MUST BE PLACED IN POSITION BEFORE LIFTING. FOR MOVING SLOWLY WITH LOADS, WITHOUT BALANCE WEIGHT IN POSITION, THE CRANE IS REGISTERED TO LIFT:-

10½ TONS AT 20 FEET RADIUS

7½	"	"	25	"	"
5½	"	"	30	"	"
4	"	"	35	"	"
2½	"	"	40	"	"

FOR MOVING SLOWLY WITH LOADS WITH BALANCE WEIGHT IN POSITION, THE CRANE IS REGISTERED TO LIFT:-

14	"	"	20	"	"
10	"	"	25	"	"
7½	"	"	30	"	"
6	"	"	35	"	"
4½	"	"	40	"	"

WHEN STATIONARY WITHOUT BALANCE WEIGHT IN POSITION, BUT WITH EXTENSION GIRDERS FULLY OUT AND CLIPS SECURED TO RAILS THE CRANE IS REGISTERED TO LIFT:-

33 TONS AT 20 FEET RADIUS

25	"	"	25	"	"
19½	"	"	30	"	"
15	"	"	35	"	"
12	"	"	40	"	"

WHEN STATIONARY WITH BALANCE WEIGHT IN POSITION, EXTENSION GIRDERS FULLY OUT AND CLIPS SECURED TO RAILS THE CRANE IS REGISTERED TO LIFT:-

36 TONS AT 20 FEET RADIUS

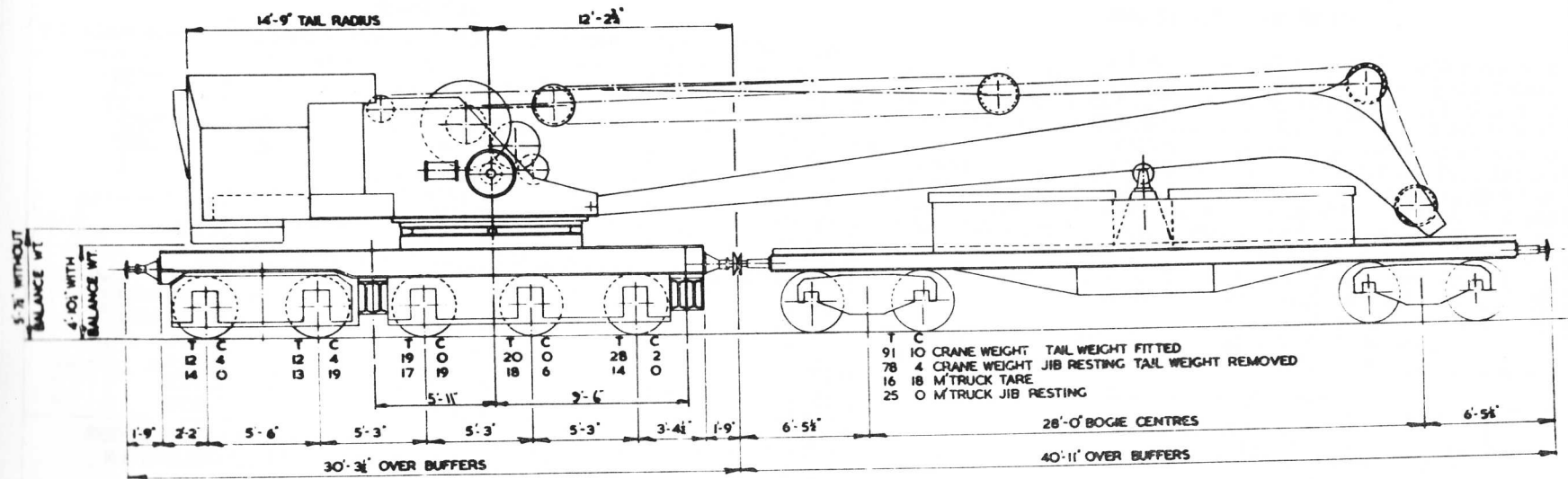
32	"	"	25	"	"
25	"	"	30	"	"
20	"	"	35	"	"
16	"	"	40	"	"

THESE INSTRUCTIONS ARE FOR LIFTING ON A LEVEL ROAD.

RADIUS	HT. OF LIFT.	OVERALL CRANE HT.
40' 0"	22' 6"	34' 0"
35' 0"	28' 9"	39' 3"
30' 0"	33' 0"	42' 9"
25' 0"	36' 3"	44' 9"
20' 0"	38' 3"	46' 6"

MINIMUM CURVE - 4 CHAIN

MAXIMUM SPEED 45 M.P.H.



MAXIMUM SPEED IN TRAIN 45 M.P.H.

JACK CENTRES 1'-6"

CRANE No. 2

RANSOMES & RAPIER.

36 TON STEAM TRAVELLING CRANE

30 TON STEAM CRANE**CAUTION****TO BE SHUNTED WITH CARE**

MINIMUM RADIUS TO BE NEGOTIATED - 5 CHAINS
 BEFORE TRAVELLING IN TRAIN JIB TO BE LOWERED ON TO MATCHTRUCK,
 THEN TAIL LOCKING SCREWS TO BE ENGAGED, THE SUPER BEING SLEWED
 IF NECESSARY. TRAVEL GEAR TO BE DISENGAGED AND SPRING JACKING
 SCREWS TO BE RIGHT UP CLEAR OF THE SPRINGS.
 BEFORE LIFTING THE SPRING JACKING SCREWS TO BE SCREWED DOWN ON
 TO CRANE SPRINGS, THE JIB TO BE RAISED FROM MATCHTRUCK AND TAIL
 LOCKS RELEASED. IF CRANE IS STANDING ON A CURVE TAIL LOCKS TO
 BE RELEASED FIRST, AND SUPER. SLEWED UNTIL IT IS IN LINE WITH
 JIB BEFORE THE JIB IS RAISED.
 TO ENGAGED TRAVEL GEAR. TRAVEL CLUTCH IN CRANE CAB TO BE
 ENGAGED AND THEN BOTH HAND WHEELS ON CRANE CARRIAGE TO BE
 ROTATED TO THE IN POSITION.
 LOADS EXCEEDING 10 TONS ARE NOT TO BE HOISTED IN FAST GEAR AND
 ARE NOT TO BE LIFTED BY THE SHACKLE THROUGH THE RAMSHORN HOOK.

S.W.L. OF HAULING WINCH 6 TONS

RADIUS	HT. OF LIFT.	OVERALL CRANE HT.
40' 0"	24' 6"	36' 9"
35' 0"	29' 0"	42' 0"
30' 0"	33' 6"	45' 9"
25' 0"	36' 3"	48' 6"
20' 0"	38' 3"	50' 9"
16' 0"	39' 6"	52' 0"

MAXIMUM SPEED 60 M.P.H.**LOAD PLATE**

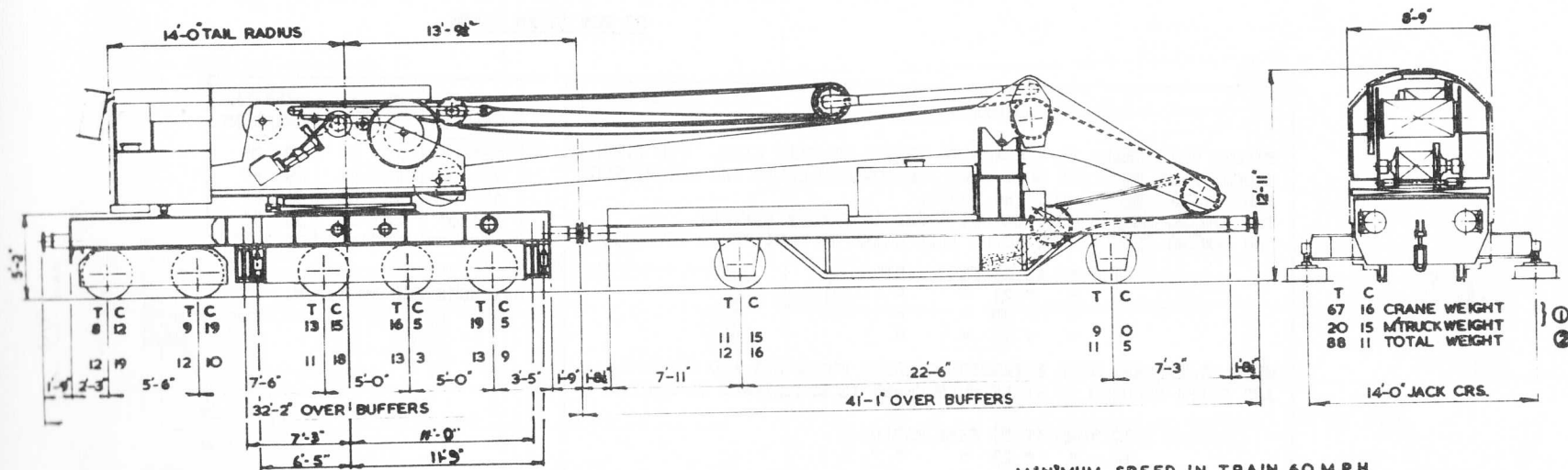
THIS CRANE IS REGISTERED TO LIFT AND SLEW WITH EXTENSION GIRDERS FULLY OUT

RADIUS	LEVEL TRACK	2" SUPERELEVATION	4" SUPERELEVATION
16' 0"	30 T.	NOT TO BE USED	NOT TO BE USED
20' 0"	25 T.	24 T.	NOT TO BE USED
25' 0"	17.5 T.	17 T.	16 T.
30' 0"	13 T.	12.75T.	12 T.
35' 0"	10 T.	9.75T.	9.5 T.
40' 0"	8 T.	8 T.	7.5 T.

FOR MOVING SLOWLY THIS CRANE IS REGISTERED TO LIFT AND SLEW

RADIUS	LEVEL TRACK	2" SUPERELEVATION	4" SUPERELEVATION
16' 0"	10 T.	NOT TO BE USED	NOT TO BE USED
30' 0"	7 T.	6.5 T.	NOT TO BE USED
25' 0"	5 T.	4.75T.	4.25T.
30' 0"	3.25T.	3 T.	2.75T.
35' 0"	2.25T.	2 T.	1.75T.
40' 0"	1.5 T.	1.5 T.	1.25T.

WHEN STANDING ON A SUPERELEVATED TRACK THE CRANE MUST NOT WORK EITHER
 LADEN OR UNLADEN AT A RADIUS LESS THAN 20' 0" FOR 2" SUPERELEVATION
 AND 25' 0" FOR 4" SUPERELEVATION.
 THE RADIUS FOR ALL SUPERELEVATION DUTIES IS MEASURED WITH THE JIB
 ON THE LOW SIDE OF THE TRACK.



CRANE No 139

COWANS SHELTON

30 TON STEAM TRAVELLING CRANE

25 TON STEAM CRANE**CAUTION**

BEFORE THIS CRANE IS ALLOWED TO TRAVEL ON MAIN LINE. THE SPRING BLOCKS MUST BE TAKEN OUT. THE JIB LOWERED ON TO THE MATCH TRUCK AND SECURED BY THE LOCKING SHAFT.
 THE SPRING BLOCKS MUST BE PUT RIGHT IN BEFORE LIFTING.
 FOR MOVING SLOWLY WITH LOADS THIS CRANE IS REGISTERED TO LIFT:-

5 TONS AT 26 FEET RADIUS

6	"	"	23	"	"
7	"	"	20	"	"
8	"	"	15	"	"

WHEN STATIONARY WITH EXTENSION GIRDERS FULLY OUT AND BLOCKED AND CLIPS SECURED TO RAILS THIS CRANE IS REGISTERED TO LIFT:-

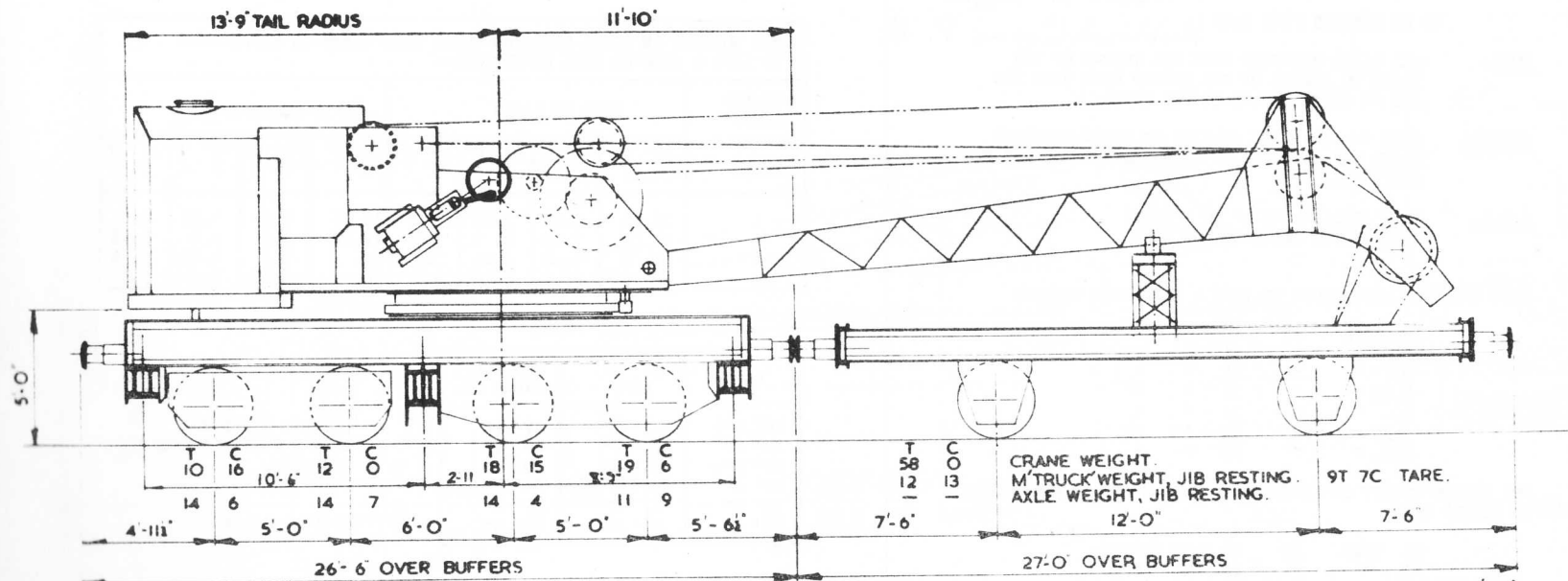
12 TONS AT 26 FEET RADIUS

16	"	"	23	"	"
20	"	"	20	"	"
25	"	"	15	"	"

THESE INSTRUCTIONS ARE FOR WORKING ON A LEVEL ROAD.

RADIUS	HT. OF LIFT	OVERALL CRANE HT.
26' 0"	20' 0"	28' 0"
23' 0"	22' 6"	29' 9"
20' 0"	24' 6"	31' 9"
15' 0"	26' 6"	34' 3"

MAXIMUM SPEED 30 M.P.H.



CRANE No 14
COWANS & SHELDON

25 TON STEAM TRAVELLING CRANE.

MAXIMUM SPEED IN TRAIN 30 M.P.H.

15 TON DIESEL CRANE

CAUTION

* Refers to Taylor
Hubbard Crane P. 18

TO BE SHUNTED WITH CARE

NOTE:

ALL RADII MEASURED FROM THE CENTRE OF THE
TRACK TO CENTRE OF THE LOADED HOOK WITH THE
JIB AT RIGHT ANGLES TO THE TRACK.

WARNING

WHEN THE CRANE IS WORKING ON SUPER-ELEVATED
TRACK THE CAPACITY OF EACH RADIUS MUST NOT BE
EXCEEDED.

S.W.L.

WITH SINGLE ROPE UP TO 5 TONS
WITH SNATCH BLOCK OVER 5 TONS

THIS CRANE IS REGISTERED TO LIFT & SLEW WHEN BLOCKED

15 TONS	AT	18 FEET RADIUS
10.6 "	"	21 " "
9.1 "	"	24 " "
7.85 "	"	27 " "
6.6 "	"	30 " "
5.35 "	"	33 " "
4.5 "	"	35 " "

FOR MOVING SLOWLY ON LEVEL TRACK THIS CRANE IS REGISTERED
TO LIFT & SLEW

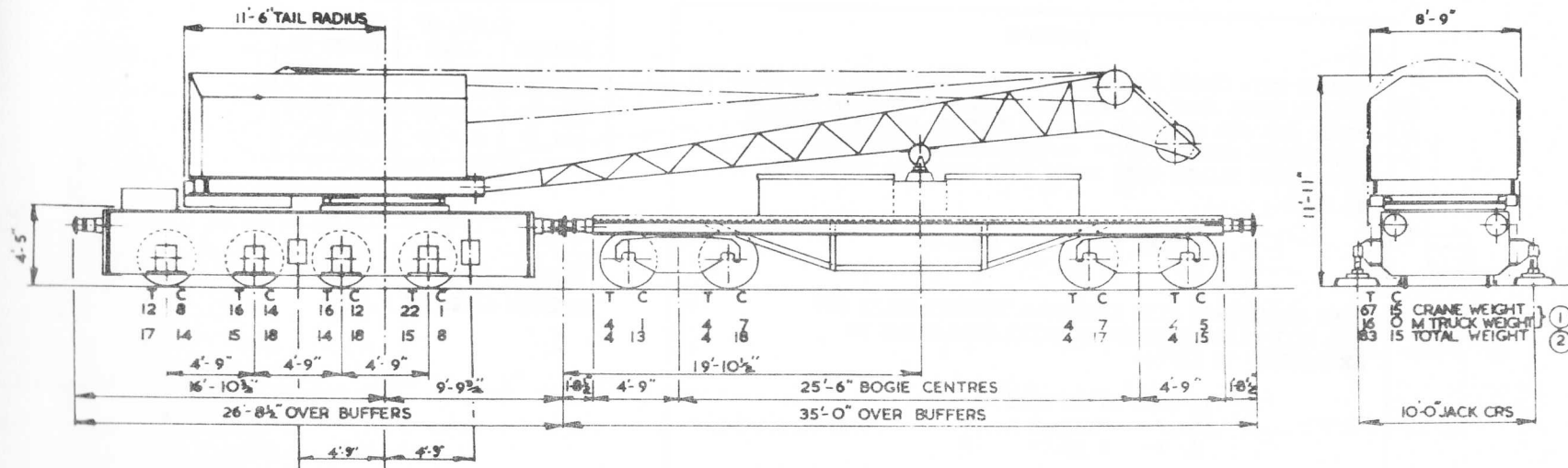
15 TONS	AT	16 FEET RADIUS
12 "	"	18 " "
9.6 "	"	21 " "
7.95 "	"	24 " "
6.4 "	"	27 " "
5.0 "	"	30 " "
3.65 "	"	33 " "
3.0 "	"	35 " "
2.35 "	"	39 " "
2.0 "	"	42 " "

FOR WORKING ON SUPER-ELEVATED TRACK THIS CRANE IS REGISTERED
TO LIFT & SLEW ON RAIL CONDITIONS:-

FORWARD SUPER- ELEVATED INCHES	FREE ON RAILS				BLOCKED			
	16' 0"	22' 0"	28' 0"	35' 0"	18' 0"	22' 0"	28' 0"	35' 0"
	T C	T C	T C	T C	T C	T C	T C	T C
1	13.15	8.10	5.15	3.0	13.15	9.0	6.15	4.0
2	12.10	7.15	5.5	3.0	12.10	8.5	6.0	3.15
3	11.5	7.2	4.16	3.0	11.5	7.5	5.10	3.5
4	10.0	6.0	4.10	3.0	10.0	6.10	5.0	3.0

RADIUS	HT. OF LIFT	OVERALL CRANE HT.
16' 0"	35' 9"	47' 2"
18' 0"	35' 7"	46' 8"
22' 0"	34' 6"	45' 0"
28' 0"	30' 2"	41' 7"
35' 0"	25' 0"	37' 0"
42' 0"	15' 5"	29' 4"

HEIGHTS GIVEN ARE
WHEN 3 PARTS OF ROPE
ARE USED.



CRANE No 352/3/4/5/6

MAXIMUM SPEED IN TRAIN 45 M.P.H.

BOOTH.

15 TON DIESEL HYDRAULIC CRANE

15 TON STEAM CRANE

CAUTION

BEFORE THIS CRANE IS ALLOWED TO TRAVEL ON THE MAIN LINE THE
 SPRING STOPS MUST BE UNBLOCKED, THE JIB LOWERED ON MATCH
 TRUCK AND JIB AND TAIL SECURED BY NOSE AND TAIL CHAINS.
 THE SPRING STOPS MUST BE BLOCKED BEFORE LIFTING.
 FOR MOVING SLOWLY WITH LOADS THIS CRANE IS REGISTERED
 TO LIFT:-

5½ TONS AT 20 FEET RADIUS
 3 " " 30 " "

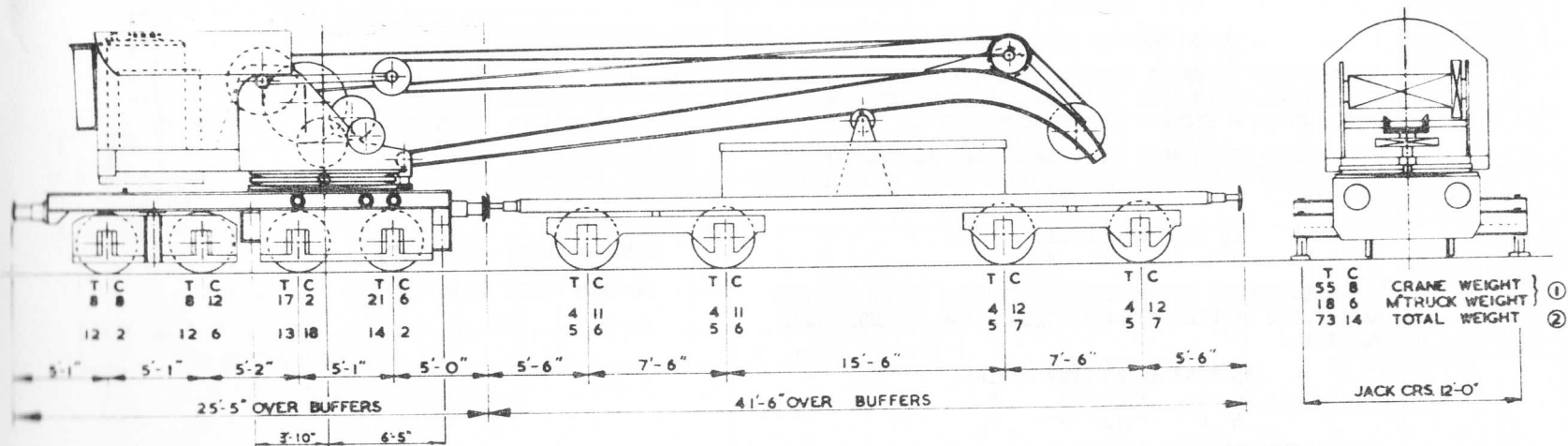
WHEN STATIONARY WITH EXTENSION GIRDERS FULLY OUT
 AND RAIL CLIPS SECURED TO RAILS THIS CRANE IS
 REGISTERED TO LIFT:-

15 TONS AT 20 FEET RADIUS
 10 " " 25 " "
 6 " " 30 " "

THESE INSTRUCTIONS ARE FOR LIFTING ON A LEVEL ROAD.

RADIUS	HT. OF LIFT	OVERALL CRANE HT.
30' 0"	25' 4"	34' 3"
25' 0"	28' 6"	38' 0"
20' 0"	31' 9"	40' 4"

MINIMUM CURVE - 4 CHAIN
 MAXIMUM SPEED 25 M.P.H.



MAXIMUM SPEED IN TRAIN 25.M.P.H.

CRANE No 15

SMITH, RODLEY

15 TON STEAM TRAVELLING CRANE

CAUTION

- TO BE SHUNTED WITH CARE -

BEFORE THIS CRANE IS ALLOWED TO TRAVEL ON THE MAIN LINE THE SPRING STOPS MUST BE SCREWED UP, THE JIB LOWERED ON MATCH TRUCK & SECURED BY THE NOSE CHAINS.

THE SPRING STOPS MUST BE SCREWED DOWN BEFORE LIFTING. FOR MOVING SLOWLY WITH LOADS, THIS CRANE IS REGISTERED TO LIFT:-

5½ TONS AT 20 FEET RADIUS
3 " " 30 " "

WHEN STATIONARY WITH EXTENSION GIRDERS FULLY OUT AND RAIL CLIPS SECURED TO RAILS THIS CRANE IS REGISTERED TO LIFT:-

15 TONS AT 20 FEET RADIUS
10 " " 25 " "
6 " " 30 " "

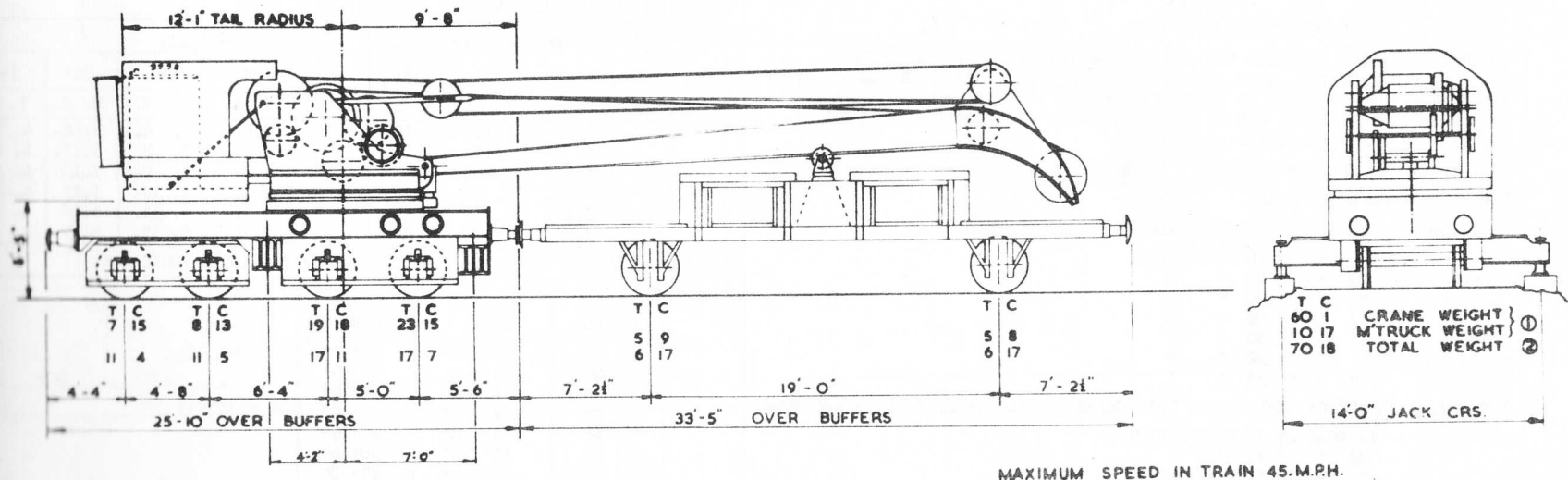
THESE INSTRUCTIONS ARE FOR LIFTING ON A LEVEL ROAD

15 TON STEAM CRANE

RADIUS	HT. OF LIFT	OVERALL CRANE HT.
30' 0"	24' 0"	33' 0"
25' 0"	28' 0"	37' 0"
20' 0"	30' 6"	40' 0"

MINIMUM CURVE - 4 CHAIN

MAXIMUM SPEED 45 M.P.H.



CRANE No 75

BOOTH

15 TON STEAM TRAVELLING CRANE.

15 TON DIESEL CRANE

CAUTION * REFERS TO BOOTH CRANE

TO BE SHUNTED WITH CARE ON P 12

BEFORE TRAVELLING IN TRAIN THE JIB MUST BE LOWERED ON TO MATCH TRUCK, JIB FOOT PINS REMOVED, MOSE CHAINS SECURED AND TAIL LOCKS SCREWED UP TIGHT TO ENSURE SUPERSTRUCTURE IS BEARING ON ROLLER PATH AT FRONT OF CRANE. WHEN STANDING ON CURVE, CAB TO BE SLEWED AFTER JIB FOOT PINS REMOVED SO THAT THE TAIL MAY BE LOCKED AS ABOVE.

MINIMUM RADIUS TO BE NEGOTIATED : 3 CHAINS

FOR WORKING ON LEVEL TRACK

THIS CRANE IS REGISTERED TO LIFT AND SLEW WHEN BLOCKED.

15 TONS AT 18 FEET RADIUS

12½	"	"	20	"	"
10	"	"	24	"	"
8½	"	"	28	"	"
7½	"	"	30	"	"
6	"	"	32	"	"
4½	"	"	35	"	"

FOR MOVING SLOWLY ON LEVEL TRACK THIS CRANE IS REGISTERED TO LIFT AND SLEW.

15 TONS AT 15 FEET RADIUS

9½	"	"	20	"	"
7	"	"	24	6"	INS. "
5	"	"	30	FEET	RADIUS
3	"	"	35	"	"

WHEN WORKING WITH SINGLE PART ROPE MAXIMUM LOAD NOT TO EXCEED 3 TONS.

WITH JIB REMOVED, CRANE MUST NOT BE SLEWED AT RIGHT ANGLES TO TRACK, UNLESS GIRDERS ARE OUT AND PROPPED.

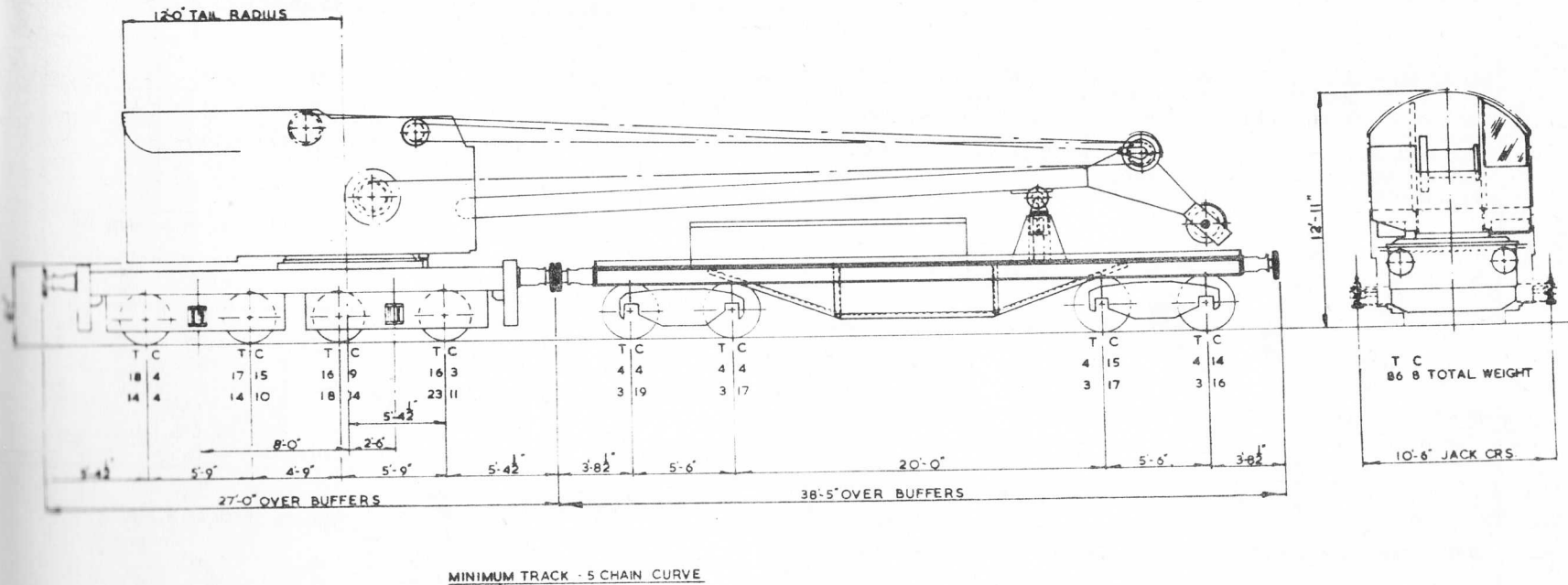
FOR WORKING ON SUPERELEVATED TRACK THIS CRANE IS REGISTERED TO LIFT AND SLEW ON RAIL CONDITIONS:-

FORWARD SUPER- ELEVATION INCHES	FREE ON RAIL			BLOCKED				
	24'-6"	30'	35'	24'	28'	30'	32'	35'
	T. C.	T. C.	T. C.	T. C.	T. C.	T. C.	T. C.	T. C.
1	6.13.	4.15.	2.18.	9.13.	8.4.	7. 4.	5.16.	4. 7.
2	6. 9.	4.13.	2.16.	9. 9.	8. 1.	7. 2.	5.15.	4. 6.
3	6. 6.	4.10.	2.15.	9. 6.	7.19.	7. 0.	5.13.	4. 5.
4	6. 3.	4. 8.	2.13.	9. 2.	7.15.	6. 17.	5.11.	4. 4.
5	5.19.	4. 5.	2.12.	9. 0.	7.14.	6. 16.	5.10.	4. 3.
6	5.15.	4. 2.	2.10.	8.15.	7.10.	6. 13.	5. 7.	4. 0.

RADII GIVEN ARE THOSE SHOWN BY CRANE GRAVITY RADIUS INDICATOR.

RADIUS	HT. OF LIFT.	OVERALL CRANE HT.
15' 0"	35' 11"	44' 9"
18' 0"	35' 2"	43' 9"
20' 0"	34' 4"	43' 0"
24' 0"	32' 5"	41' 0"
24' 6"	32' 2"	40' 9"
28' 0"	30' 1"	38' 6"
30' 0"	28' 7"	37' 0"
32' 0"	27' 2"	35' 3"
35' 0"	23' 10"	31' 9"

MAXIMUM SPEED 45 M.P.H.



CRANE No 352
TAYLOR & HUBBARD

15 TON DIESEL ELECTRIC CRANE

CAUTION

TO BE SHUNTED WITH CARE

BEFORE TRAVELLING IN TRAIN THE JIB MUST BE LOWERED ONTO MATCH TRUCK, JIB FOOT PINS REMOVED, MOSE CHAINS SECURED AND TAIL LOCKS SCREWED UP TIGHT TO ENSURE SUPERSTRUCTURE IS BEARING ON ROLLER PATH AT FRONT OF CRANE.

WHEN STANDING ON CURVE, CAB TO BE SLEWED AFTER JIB FOOT PINS REMOVED, SO THAT THE TAIL MAY BE LOCKED AS ABOVE.

MINIMUM RADIUS TO BE NEGOTIATED : 3 CHAINS

FOR WORKING ON LEVEL TRACK:

THIS CRANE IS REGISTERED TO LIFT AND SLEW WHEN BLOCKED:

10 TONS AT 20 FEET RADIUS

8½	"	"	28	"	"
7	"	"	30	"	"
5½	"	"	32	"	"
3½	"	"	35	"	"

WHEN MOVING SLOWLY THIS CRANE IS REGISTERED TO LIFT AND SLEW:

10	"	"	17	"	"
7½	"	"	20	"	"
5	"	"	25	"	"
3½	"	"	30	"	"
2½	"	"	35	"	"

WHEN WORKING WITH SINGLE ROPE MAXIMUM LOAD NOT TO EXCEED 2½ TONS

MAGNET WORKING

WHEN WORKING WITH A SINGLE MAGNET ON HOOK, MAXIMUM LOAD TO BE LIFTED BY MAGNET NOT TO EXCEED 1 TON

WHEN WORKING WITH A MAGNET ON EACH END OF SPREADER BEAM, MAXIMUM LOAD TO BE LIFTED BY MAGNETS NOT TO EXCEED 2 TONS DISTRIBUTED.

WHEN WORKING WITH SPREADER BEAM RADI1 MUST NOT EXCEED

1. 20 FT. WHEN WORKING FREE ON RAIL

2. 30 FT. WHEN WORKING BLOCKED

FOR WORKING ON SUPERELEVATED TRACK THIS CRANE IS REGISTERED TO LIFT AND SLEW UNDER FREE ON RAIL CONDITIONS.

FORWARD SUPERELEVATION	17'	20'	25'	30'	35'	
1"	9.5 T.	7.25 T.	4.75 T.	3.25 T.	2.25 T.	
2"	9.25 T.	7.0 T.	4.5 T.	3.25 T.	2.25 T.	
3"	9.0 T.	6.75 T.	4.5 T.	3.0 T.	2.25 T.	
4"	8.75 T.	6.5 T.	4.25 T.	3.0 T.	2.25 T.	
5"	8.5 T.	6.5 T.	4.25 T.	3.0 T.	2.0 T.	
6"	8.0 T.	6.25 T.	4.0 T.	2.75 T.	2.0 T.	

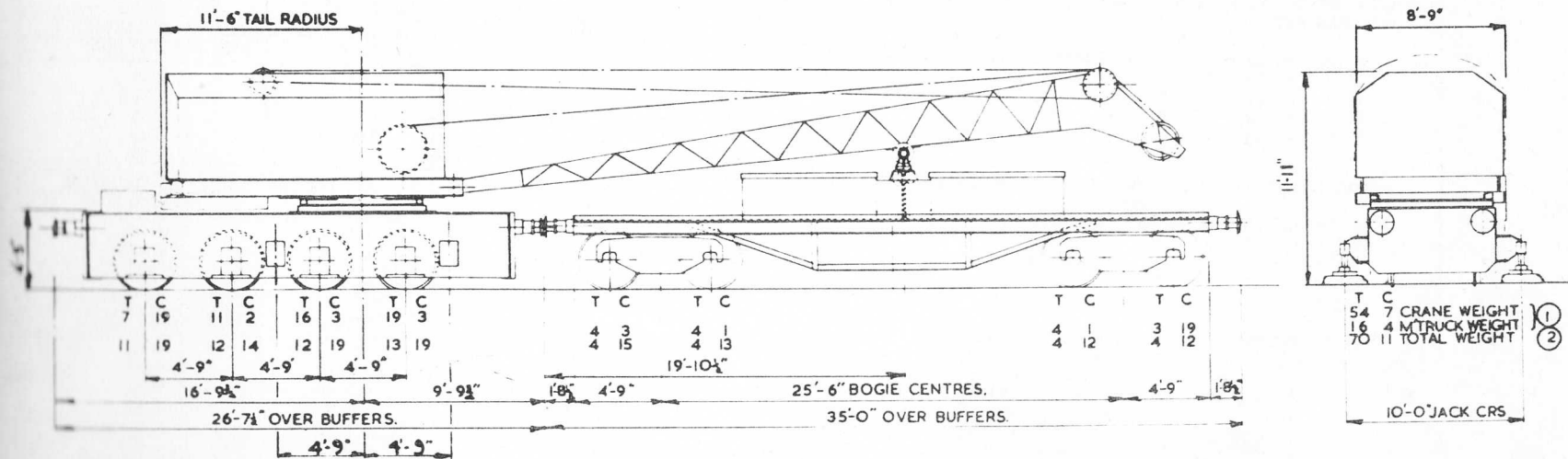
FOR WORKING ON SUPERELEVATED TRACK UNDER BLOCKED CONDITIONS THIS CRANE IS REGISTERED TO LIFT AND SLEW.

FORWARD SUPERELEVATION	20'	28'	30'	32'	35'	
1"	9.75 T.	8.25 T.	6.75 T.	5.25 T.	3.25 T.	
2"	9.5 T.	8.0 T.	6.75 T.	5.25 T.	3.25 T.	
3"	9.5 TT.	8.0 T.	6.5 T.	5.0 T.	3.25 T.	
4"	9.25 T.	7.75 T.	6.5 T.	5.0 T.	3.25 T.	
5"	9.0 T.	7.75 T.	6.25 T.	5.0 T.	3.0 T.	
6"	8.75 T.	7.5 T.	6.25 T.	4.75 T.	3.0 T.	

RADII GIVEN ARE RADII SHOWN BY CRANE GRAVITY RADIUS INDICATOR.

RADIUS	HT. OF LIFT.	OVERALL CRANE HT.
35' 0"	24' 0"	31' 3"
32' 0"	27' 4"	34' 6"
30' 0"	29' 6"	36' 3"
28' 0"	31' 0"	37' 9"
25' 0"	32' 6"	39' 9"
20' 0"	35' 0"	42' 6"
17' 0"	36' 0"	43' 6"

MAXIMUM SPEED 45 M.P.H.



MAXIMUM SPEED IN TRAIN 45 M.P.H.

CRANE No. 347/8/9 350/1

BOOTH

10 TON DIESEL HYDRAULIC CRANE.

CAUTION

TO BE SHUNTED WITH CARE. BEFORE THIS CRANE IS ALLOWED TO TRAVEL ON MAIN LINE, SPRING STOPS MUST BE SCREWED UP, JIB LOWERED ON MATCH TRUCK AND TAIL LOCK PUT IN. SPRING STOPS MUST BE SCREWED DOWN BEFORE LIFTING. WHEN STATIONARY WITH EXTENSION GIRDERS FULLY OUT THIS CRANE IS REGISTERED TO LIFT AND SLEW WITH :-

10 TONS at 18 FEET RADIUS ON DOUBLE FALL OF ROPE									
7 "	"	22 "	"	"	"	"	"	"	"
5 "	"	27 "	"	"	"	SINGLE	"	"	"
4 "	"	32 "	"	"	"	"	"	"	"
3.5 "	"	35 "	"	"	"	"	"	"	"

MOVING SLOWLY WITH LOADS THIS CRANE IS REGISTERED TO LIFT AND SLEW WITH:-

10 TONS at 18 FEET RADIUS ON DOUBLE FALL OF ROPE									
7.5 "	"	22 "	"	"	"	"	"	"	"
5 "	"	24 "	"	"	"	SINGLE	"	"	"
3.5 "	"	30 "	"	"	"	"	"	"	"
2.5 "	"	35 "	"	"	"	"	"	"	"

THESE INSTRUCTIONS ARE FOR WORKING ON LEVEL ROAD.

RADIUS	HT. OF LIFT.	OVERALL CRANE HT.
35' 0"	23' 3"	30' 0"
32' 0"	26' 9"	33' 6"
30' 0"	28' 6"	35' 6"
24' 0"	33' 0"	39' 6"
22' 0"	32' 6"	40' 3"
18' 0"	34' 0"	42' 1"
15' 0"	35' 9"	43' 6"

DUTIES FREE ON RAIL AT 2" ELEVATION	
RADIUS	SAFE WORKING LOAD
18' 0"	7.1 TONS
24' 0"	4.7 TONS
30' 0"	3.3 TONS
35' 0"	2.2 TONS

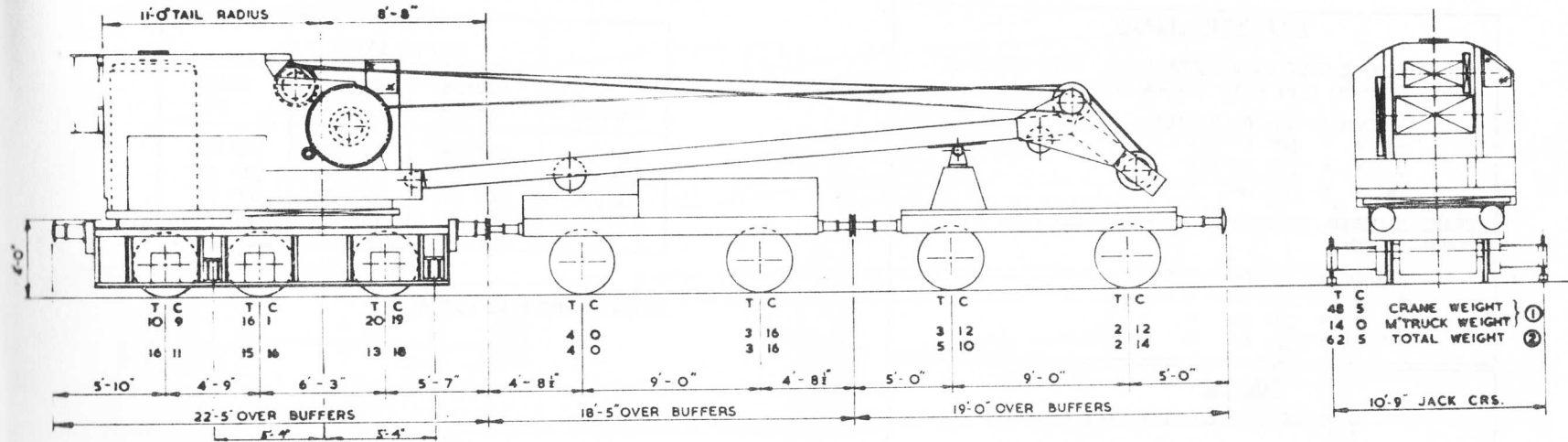
DUTIES CRANE SECURED AT 2" ELEVATION	
RADIUS	SAFE WORKING LOAD
18' 0"	9.5 TONS
22' 0"	7.0 TONS
27' 0"	5.0 TONS
32' 0"	3.6 TONS
35' 0"	2.85 TONS

DUTIES FREE ON RAIL AT 3" ELEVATION	
RADIUS	SAFE WORKING LOAD
24' 0"	4.4 TONS
30' 0"	3.0 TONS
35' 0"	2.0 TONS

DUTIES CRANE SECURED AT 3" ELEVATION	
RADIUS	SAFE WORKING LOAD
22' 0"	6.6 TONS
27' 0"	4.7 TONS
32' 0"	3.3 TONS
35' 0"	2.55 TONS

DUTIES FREE ON RAIL AT 4" ELEVATION	
RADIUS	SAFE WORKING LOAD
24' 0"	4.05 TONS
30' 0"	2.7 TONS
35' 0"	1.75 TONS

DUTIES CRANE SECURED AT 4" ELEVATION	
RADIUS	SAFE WORKING LOAD
27' 0"	4.35 TONS
32' 0"	3.05 TONS
35' 0"	2.3 TONS



TAYLOR HUBBARD.

10 TON STEAM TRAVELLING CRANE.

INSTRUCTION PLATE

FOR MOVING SLOWLY ON A LEVEL ROAD, THIS CRANE IS REGISTERED TO LIFT WITH SINGLE ROPE:-

3 TONS AT 15' 0" RADIUS

2½ " " 20' 0" "

2 " " 25' 0" "

1½ " " 30' 0" "

CRANE SECURED, EXTENSION GIRDERS FULLY OUT, AND DOUBLE ROPE:-

6 TONS AT 15' 0" RADIUS

5 " " 20' 0" "

4 " " 25' 0" "

3 " " 30' 0" "

CAUTION

- TO BE SHUNTED WITH CARE -

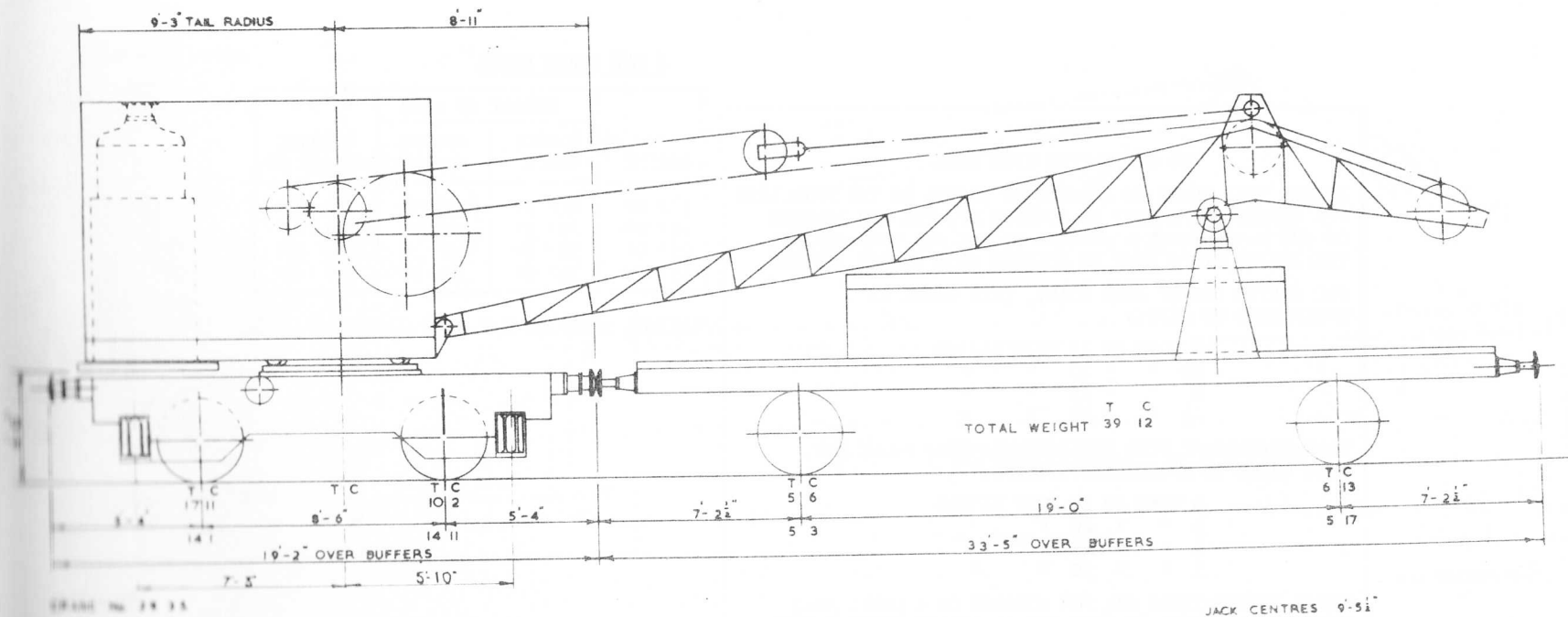
BEFORE THIS CRANE IS ALLOWED TO TRAVEL ON THE MAIN LINE, THE SPRING STOPS MUST BE SCREWED UP AND THE JIB LOWERED ON THE MATCHTRUCK AND SECURED BY THE JIB HEAD CHAINS.

THE SPRING STOPS MUST BE SCREWED DOWN BEFORE LIFTING.

6 TON STEAM CRANE

RADIUS	HT. OF LIFT		OVERALL CRANE HT.
	DOUBLE CHAIN	SINGLE CHAIN	
30' 0"	22' 4"	26' 4"	32' 0"
25' 0"	27' 0"	30' 5"	36' 2"
20' 0"	30' 0"	33' 9"	39' 2"
15' 0"	32' 3"	35' 6"	40' 9"

MAXIMUM SPEED 40 M.P.H.



JACK CENTRES 9'-5 1/2"

6 TON STEAM TRAVELLING CRANE

CAUTION

TO BE SHUNTED WITH CARE

BEFORE THIS CRANE IS ALLOWED TO TRAVEL ON THE MAIN LINE,
THE SPRING STOPS MUST BE SCREWED UP, THE JIB LOWERED
ON THE MATCH TRUCK & SECURED BY THE JIB HEAD CHAINS.
THE SPRING STOPS MUST BE SCREWED DOWN BEFORE LIFTING.

FOR MOVING SLOWLY WITH LOADS, THIS CRANE IS
REGISTERED TO LIFT:-

3 TONS AT 15 FEET RADIUS
2½ " " 20 " "
2 " " 25 " "
1½ " " 30 " "

WHEN STATIONARY WITH EXTENSION GIRDERS FULLY OUT,
THIS CRANE IS REGISTERED TO LIFT:-

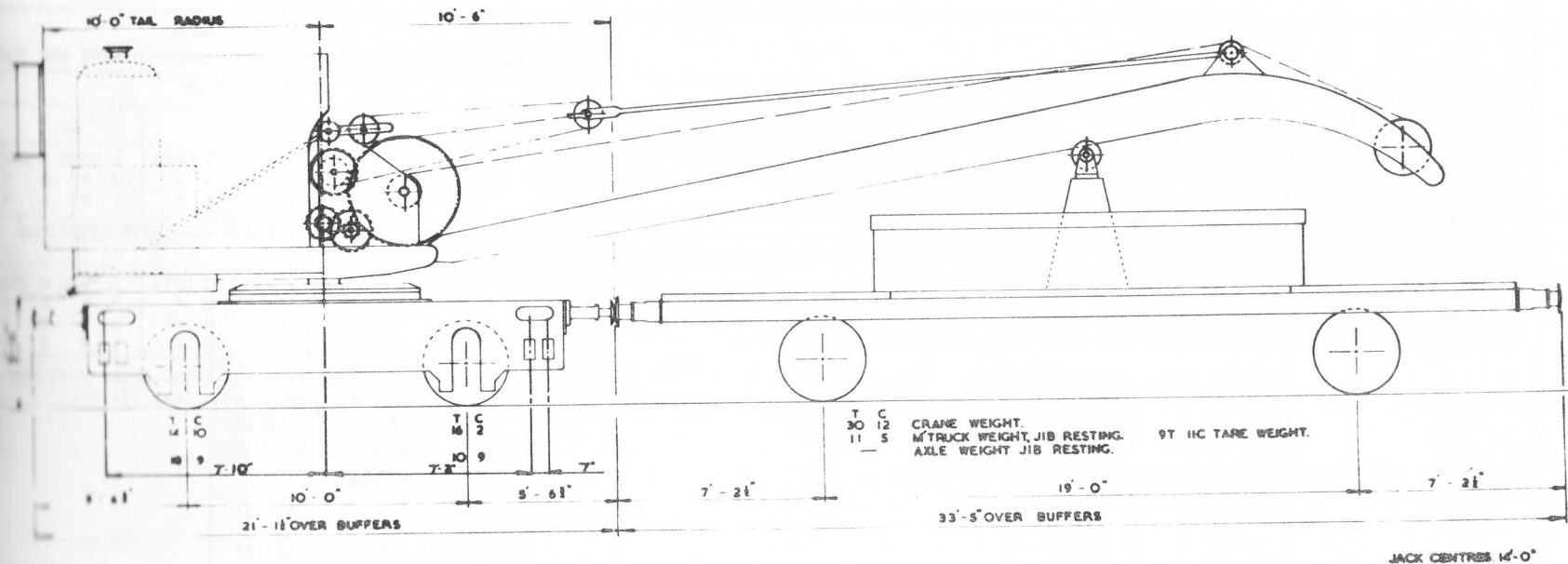
6 TONS AT 15 FEET RADIUS
5 " " 20 " "
4 " " 25 " "
3 " " 30 " "

THESE INSTRUCTIONS ARE FOR WORKING ON A LEVEL ROAD
DOUBLE CHAIN MUST BE USED FOR ALL LOADS ABOVE 3 TONS.

6 TON STEAM CRANE

RADIUS	HEIGHT OF LIFT		OVERALL CRANE HT.
	DOUBLE CHAIN	SINGLE CHAIN	
30' 0"	24' 9"	27' 3"	29' 10"
25' 0"	29' 3"	31' 9"	34' 6"
20' 0"	32' 9"	35' 3"	37' 8"
15' 0"	34' 9"	37' 3"	40' 0"

MAXIMUM SPEED 40 M.P.H.



Drawn No. 40

S. W. R.

6 TON STEAM TRAVELLING CRANE

5 TON DIESEL CRANE**CAUTION**

TO BE SHUNTED WITH CARE

MINIMUM RADIUS CURVE TO BE NEGOTIATED - 3 CHAINS
BEFORE TRAVELLING IN TRAIN THE SPRING STOPS ARE TO BE FREED, THE JIB LOWERED ON TO THE
 MATCH TRUCK NOSE CHAINS SECURED, JIB FOOT LOCKING PINS REMOVED AND TAIL LOCKS SCREWED
 TIGHT AND LOCKED. WHEREVER POSSIBLE TAIL LOCKS TO BE SCREWED UP TIGHT BEFORE JIB
 IS FINALLY LOWERED ON TO MATCH TRUCK, SO AS TO ENSURE SUPERSTRUCTURE IS BEARING
 ON ROLLER PATH AT FRONT OF CRANE AFTER JIB IS LOWERED.
 THE TRAVELLING GEAR IS TO BE DISENGAGED BY ROTATING BOTH HANDWHEELS TO THE "OUT"
 POSITION AND LOCKED AND THE SLEW FOOT BRAKE APPLIED AND LOCKED ON.
TO ENGAGE TRAVELLING GEAR BOTH HANDWHEELS TO BE ROTATED TO THE "IN" POSITION AND LOCKED.
 THE ONE AT MATCH TRUCK END OF CRANE TO BE ENGAGED FIRST.
BEFORE LIFTING, THE SPRING STOPS ARE TO BE SCREWED DOWN AND THE JIB FOOT LOCKING PINS
INSERTED FOR WORKING ON LEVEL TRACK.
 THIS CRANE IS REGISTERED TO LIFT AND SLEW WITH EXTENSION GIRDERS FULLY OUT:-

5 TONS 0 CWTs. AT 20' 0" RADIUS
 3 " 0 " " 27' 6" "
 2 " 0 " " 35' 0" "
 1 " 5 " " 40' 0" "

FOR MOVING SLOWLY THIS CRANE IS REGISTERED TO LIFT AND SLEW:-

5 TONS 0 CWTs. AT 17' 0" RADIUS
 3 " 0 " " 23' 0" "
 2 " 10 " " 26' 0" "
 1 " 5 " " 35' 0" "

WHEN WORKING WITH SINGLE PART ROPE THE MAXIMUM LOAD MUST NOT EXCEED 2 TON 10 CWTs.

MAXIMUM SPEED 40 M.P.H.

FOR MOVING SLOWLY THIS CRANE IS REGISTERED TO LIFT AND SLEW.

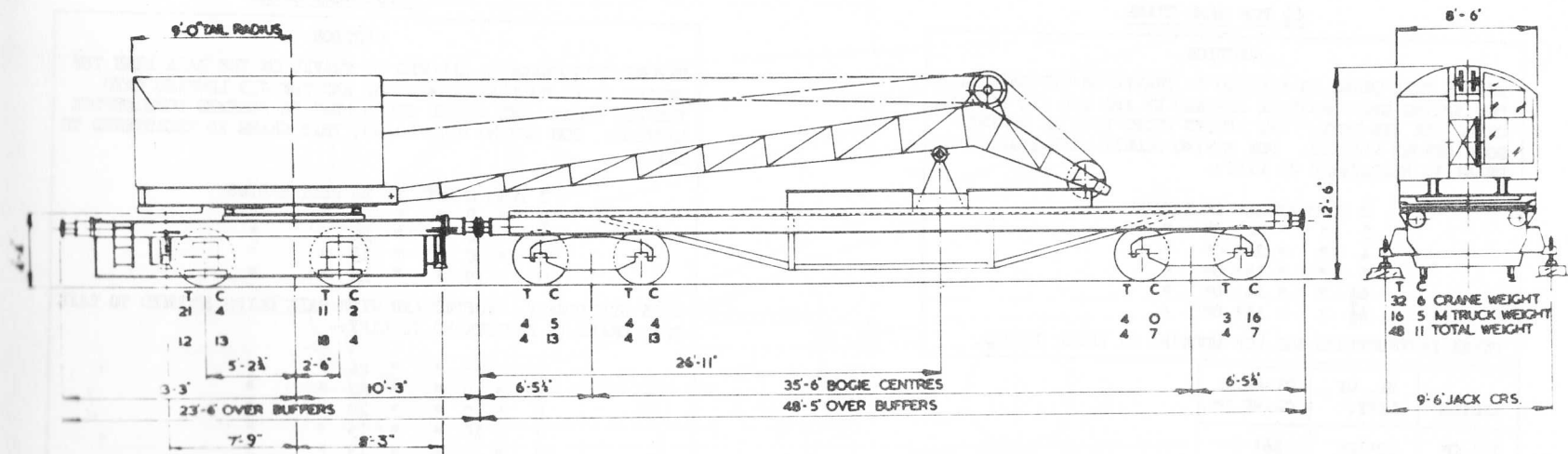
RADIUS ON LOW SIDE	SUPERELEVATION		
	2"	4"	6"
23' 0"	2 TONS 15 CWTs	2 TONS 10 CWTs	2 TONS 5 CWTs
26' 0"	2 " 7 "	2 " 5 "	2 " 0 "
35' 0"	1 " 5 "	1 " 5 "	1 " 4 "

THIS CRANE IS REGISTERED TO LIFT AND SLEW WITH EXTENSION GIRDERS FULLY OUT.

23' 0"	4 TONS 0 CWTs	4 TONS 0 CWTs	4 TONS 0 CWTs
27' 6"	3 " 0 "	3 " 0 "	3 " 0 "
35' 0"	2 " 0 "	2 " 0 "	2 " 0 "
40' 0"	1 " 5 "	1 " 5 "	1 " 5 "

WHEN STANDING ON A SUPERELEVATED TRACK THE CRANE MUST NOT WORK LADEN OR UNLADEN AT A RADIUS LESS THAN 23' 0".

RADIUS	HT. OF LIFT.	OVERALL CRANE HT.
ROPE USED DOUBLE		
17' 0"	35' 2"	45' 3"
20' 0"	34' 5"	44' 3"
23' 0"	33' 3"	42' 9"
27' 6"	31' 1"	40' 3"
ROPE USED SINGLE		
26' 0"	29' 7"	41' 3"
35' 0"	23' 11"	34' 3"
40' 0"	18' 4"	29' 3"



CRANE No. 357/1/9

SMITH

5 TON DIESEL ELECTRIC CRANE

6½ TON HAND CRANE**CAUTION**

BEFORE THIS CRANE IS ALLOWED TO TRAVEL ON THE MAIN LINE THE SPRING STOPS MUST BE SCREWED UP AND THE JIB LOWERED ON TO THE JIB REST. THE SPRING STOPS MUST BE SCREWED DOWN BEFORE LIFTING. FOR MOVING SLOWLY WITH LOADS THIS CRANE IS REGISTERED TO LIFT:-

2 TONS AT 24' 0" RADIUS			
2	"	"	22' 0"
3	"	"	20' 0"
4	"	"	15' 0"
6	"	"	14' 0"
6½	"	"	11' 0"

THESE INSTRUCTIONS ARE FOR WORKING ON LEVEL GROUND.

RADIUS	HT. OF LIFT.	OVERALL CRANE HT.
24' 0"	10' 10"	16' 6"
22' 0"	14' 3"	19' 6"
20' 0"	16' 10"	20' 6"
15' 0"	20' 9"	24' 6"
14' 0"	21' 6"	25' 3"
11' 0"	22' 7"	26' 6"

10 TON HAND CRANE**CAUTION**

BEFORE THIS CRANE IS ALLOWED TO TRAVEL ON THE MAIN LINE THE SPRING STOPS MUST BE SCREWED UP AND THE JIB LOWERED ON TO THE JIB REST. THE SPRING STOPS MUST BE SCREWED DOWN BEFORE LIFTING. FOR MOVING WITH LOADS, THIS CRANE IS REGISTERED TO LIFT:-

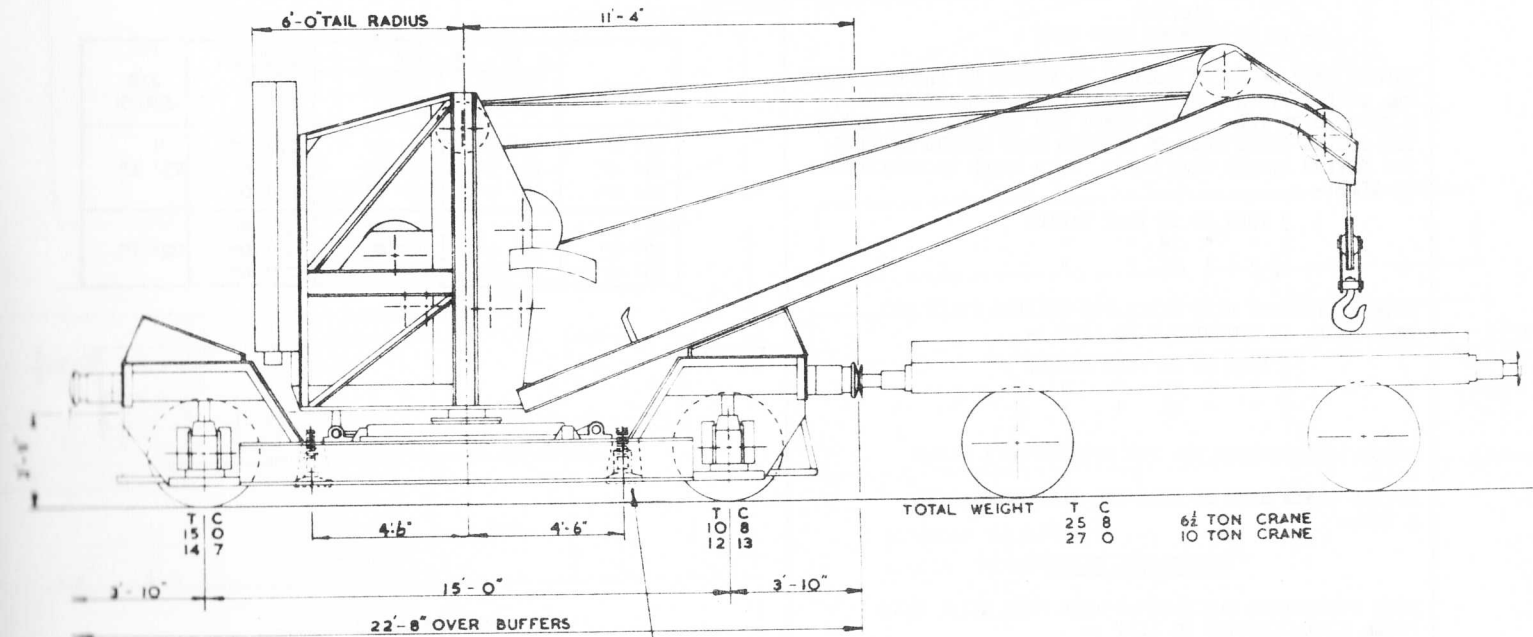
2 TONS 0 CWT. AT 24 FEET RADIUS			
3	"	0	"
3	"	10	"
5	"	0	"
6	"	10	"

WHEN STATIONARY, PROPPED AND WITH RAIL CLIPS SECURED TO RAIL THIS CRANE IS REGISTERED TO LIFT:-

3	"	5	"
4	"	0	"
5	"	0	"
7	"	10	"
10	"	0	"

THESE INSTRUCTIONS ARE FOR WORKING ON LEVEL GROUND.

RADIUS	HT. OF LIFT	OVERALL CRANE HT.
24' 0"	9' 10"	16' 9"
22' 0"	13' 10"	19' 3"
20' 0"	16' 2"	21' 3"
15' 0"	20' 4"	25' 0"
13' 0"	21' 6"	26' 3"



CRANE No 68 TON 221/4/5/6 272 266.
10 TON 223.361.

JACKS ONLY ON 10 TON CRANE.

COWANS SHELTON

6 1/2 & 10 TON TRAVELLING HAND CRANES

CAUTION
- TO BE SHUNTED WITH CARE -

BEFORE THIS CRANE IS ALLOWED TO TRAVEL ON THE MAIN LINE, THE SPRING STOPS MUST BE SCREWED UP, THE JIB LOWERED & SECURED BY THE LOCKING SHAFT AND TIE ROD PINS PUT IN. THE SPRING STOPS MUST BE SCREWED DOWN BEFORE LIFTING. FOR MOVING SLOWLY WITH LOADS, THIS CRANE IS REGISTERED TO LIFT:-

3 TONS AT 16 FEET RADIUS
2 " " 19 " "
1½ " " 21 " "

WHEN STATIONARY WITH EXTENSION GIRDERS FULLY OUT, THIS CRANE IS REGISTERED TO LIFT :-

6 TONS AT 16 FEET RADIUS
4 " " 19 " "
3 " " 21 " "

THESE INSTRUCTIONS ARE FOR WORKING ON A LEVEL ROAD.

DOUBLE CHAIN MUST BE USED FOR ALL LOADS ABOVE 3 TONS.

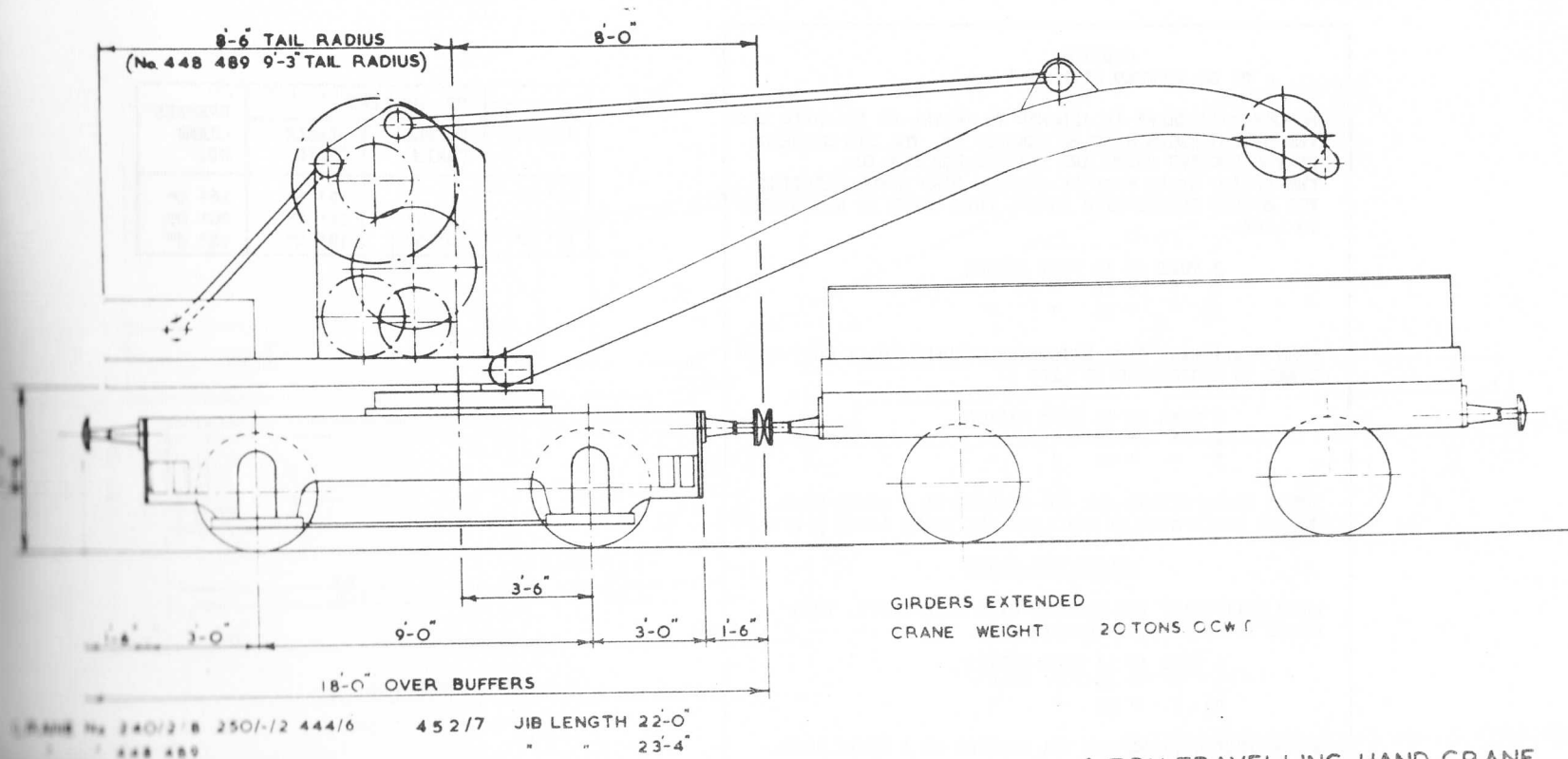
ADDITIONAL PLATE

WHEN STATIONARY AND SECURED WITH RAIL CLIPS THIS CRANE IS REGISTERED TO LIFT :-

4 TONS AT 16 FEET RADIUS
3 " " 19 " "
2½ " " 21 " "

THESE INSTRUCTIONS ARE FOR WORKING ON A LEVEL ROAD.

RADIUS	HT. OF LIFT		OVERALL CRANE HT.	JIB LENGTH
	DOUBLE CHAIN	SINGLE CHAIN		
21' 0"	18' 2"	18' 6"	20' 3"	23' 4"
19' 0"	18' 3"	21' 0"	22' 6"	
16' 0"	20' 5"	23' 0"	25' 0"	
21' 0"		11' 6"	15' 9"	22' 0"
19' 0"	13' 6"	16' 0"	19' 0"	
16' 0"	16' 6"	19' 0"	22' 6"	



6 TON TRAVELLING HAND CRANE

CAUTION**- TO BE SHUNTED WITH CARE -**

BEFORE THIS CRANE IS ALLOWED TO TRAVEL ON THE MAIN LINE THE SPRING STOPS MUST BE SCREWED UP, THE JIB SECURED BY THE LOCKING SHAFT AND THE TIE ROD PUT IN. THE SPRING STOPS MUST BE SCREWED DOWN BEFORE LIFTING. FOR MOVING SLOWLY WITH LOADS, THIS CRANE IS REGISTERED TO LIFT:-

3 TONS AT 15 FEET RADIUS
 2 " " 18 " "
 1½ " " 21 " "

WHEN STATIONARY WITH EXTENSION GIRDERS FULLY OUT, THIS CRANE IS REGISTERED TO LIFT :-

6 TONS AT 15 FEET RADIUS
 4 " " 18 " "
 3 " " 21 " "

THESE INSTRUCTIONS ARE FOR WORKING ON A LEVEL ROAD. DOUBLE CHAIN MUST BE USED FOR ALL LOADS ABOVE 3 TONS.

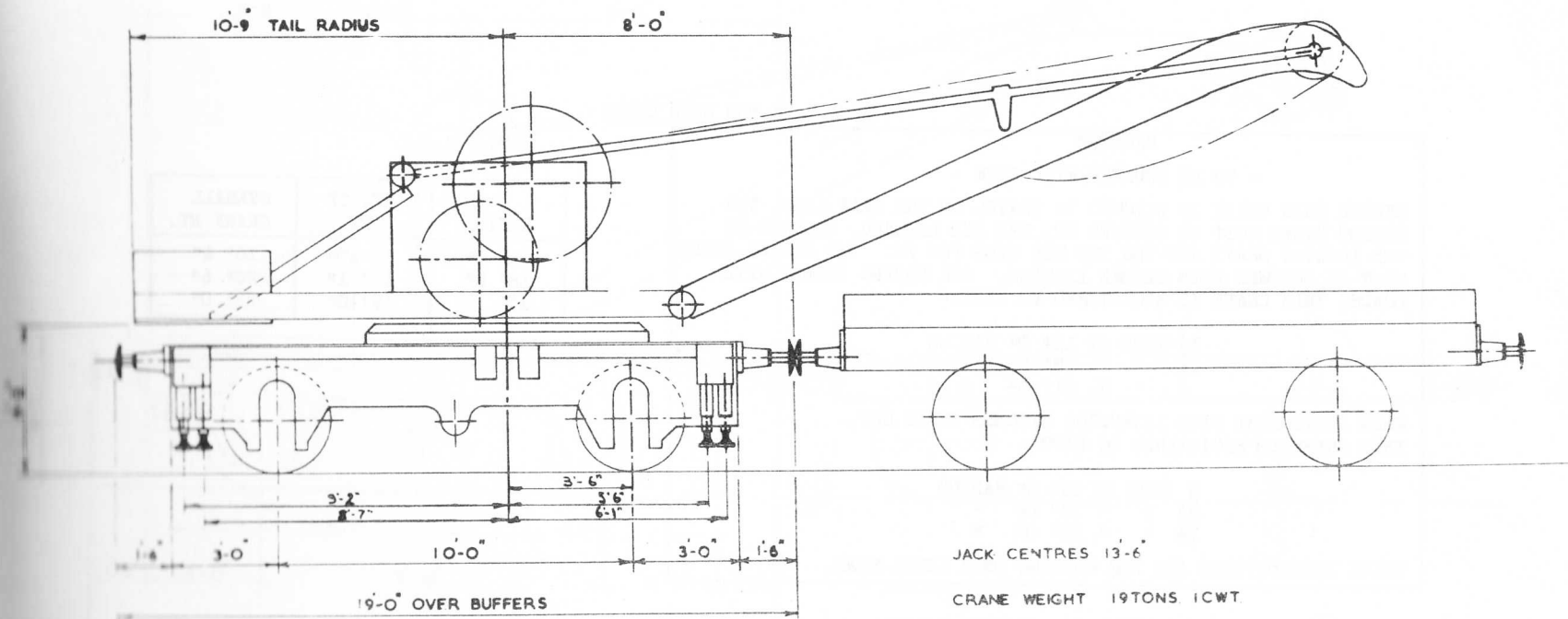
ADDITIONAL PLATE

WHEN STATIONARY AND SECURED WITH RAIL CLIPS, THIS CRANE IS REGISTERED TO LIFT:-

4 TONS AT 15 FEET RADIUS
 3 " " 18 " "
 2½ " " 21 " "

THESE INSTRUCTIONS ARE FOR WORKING ON A LEVEL ROAD.

RADIUS	HT. OF LIFT		OVERALL CRANE HT.
	DOUBLE CHAIN	SINGLE CHAIN	
21' 0"	-	12' 6"	16' 0"
18' 0"	13' 9"	16' 6"	20' 0"
15' 0"	16' 6"	19' 0"	22' 8"



CRANE No 236/7/8 438 440
G.W.R.

6 TON TRAVELLING HAND CRANE

3 TON HAND CRANE

CAUTION

- TO BE SHUNTED WITH CARE -

BEFORE THIS CRANE IS ALLOWED TO TRAVEL ON THE MAIN LINE, THE SPRING STOPS MUST BE SCREWED UP, THE JIB LOWERED, SECURED BY THE LOCKING SHAFT AND THE TIE ROD PINS PUT IN. THE SPRING STOPS MUST BE SCREWED DOWN BEFORE LIFTING. FOR MOVING SLOWLY WITH LOADS, THIS CRANE IS REGISTERED TO LIFT:-

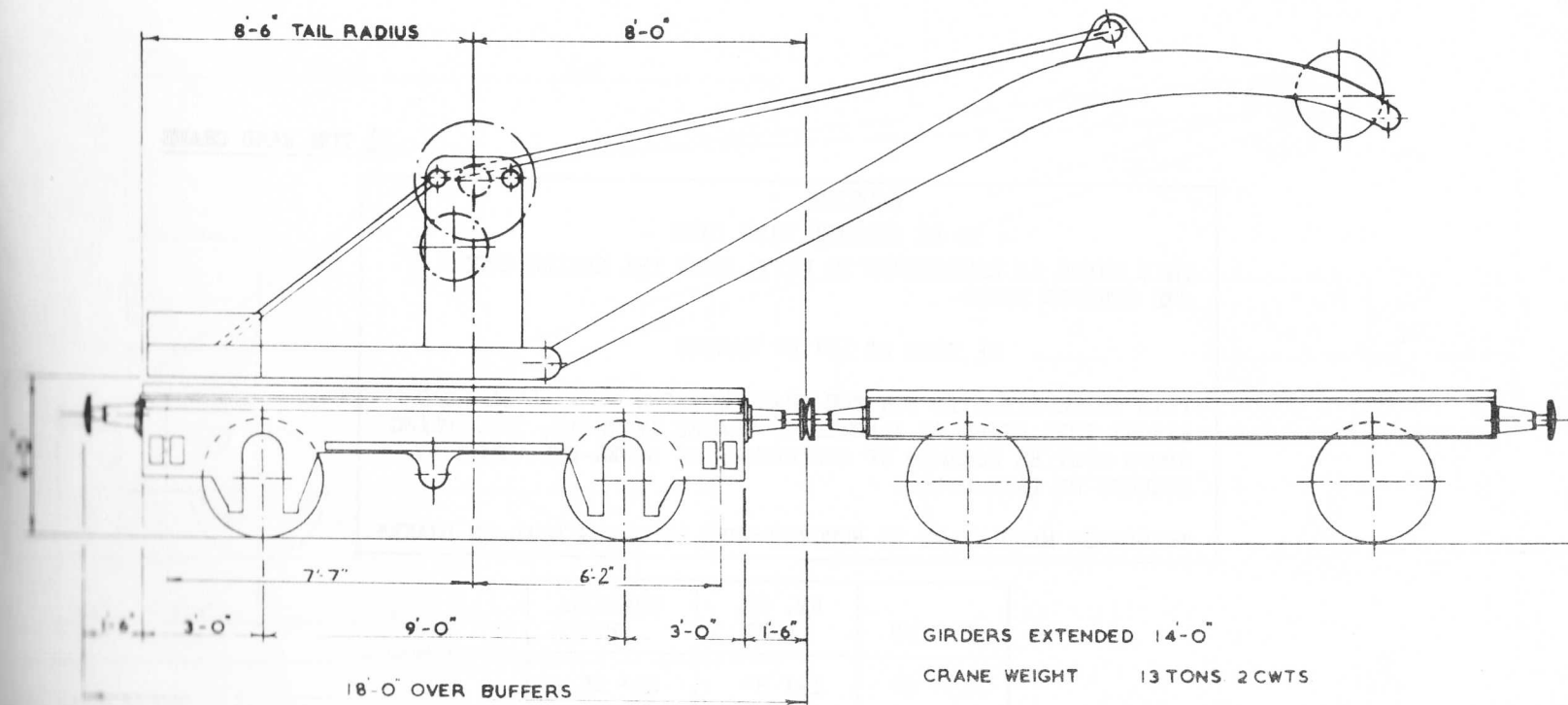
$1\frac{1}{2}$ TONS AT 15' 0" RADIUS
 $1\frac{1}{2}$ " " 18' 0" "
 $\frac{1}{2}$ " " 21' 0" "

WHEN STATIONARY WITH EXTENSION GIRDERS FULLY OUT,
 THIS CRANE IS REGISTERED TO LIFT:-

3 TONS AT 15' 0" RADIUS
 $2\frac{1}{2}$ " " 18' 0" "
 $1\frac{1}{2}$ " " 21' 0" "

THESE INSTRUCTIONS ARE FOR WORKING ON A LEVEL ROAD.

RADIUS	HT. OF LIFT	OVERALL CRANE HT.
21' 0"	12' 10"	16' 4"
18' 0"	17' 1"	20' 6"
15'	19' 10"	23' 0"



CRANE No 264 525 537/- 541 288.

GWR

Original © BRB Residuary Ltd.

3 TON TRAVELLING HAND CRANE

The scanned images of this book were provided by Simon Harding. This PDF copy by David Faulkner, 2012

2½ TON HAND CRANE**CAUTION**

- TO BE SHUNTED WITH CARE -

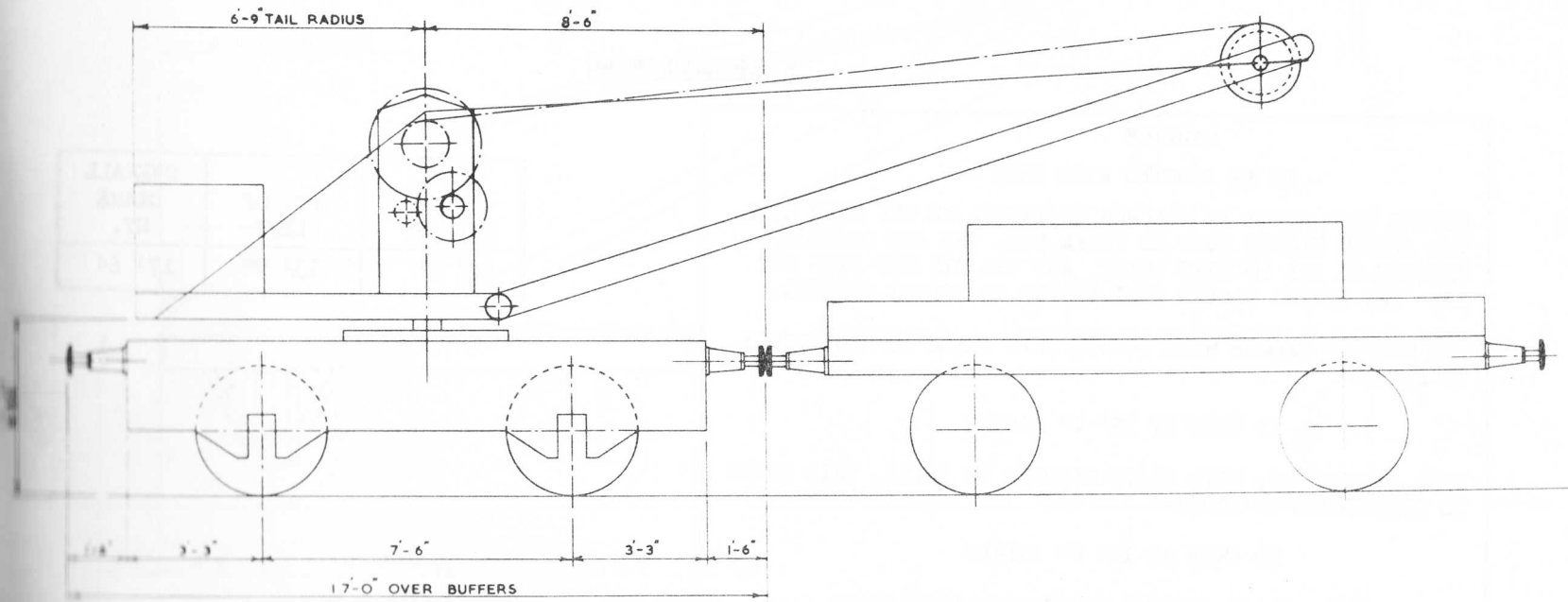
THIS CRANE IS REGISTERED TO LIFT, WHEN THE SPRING STOPS ARE SCREWED DOWN:-

2½ TONS AT 15' 0" RADIUS

THIS INSTRUCTION IS FOR THE CRANE WORKING ON A LEVEL ROAD BEFORE THIS CRANE IS ALLOWED TO TRAVEL IN TRAIN, THE SPRING STOPS MUST BE SCREWED UP AND REVOLVING SUPER-STRUCTURE SECURED BY TAIL LOCKS.

"WINDING" HANDLES TO BE REMOVED WHEN LOWERING LOAD ON BRAKE".

RADIUS	HT. OF LIFT	OVERALL HT.
15' 0"	19' 3"	23' 0"



CRANE No. 550

COWANS & SHELDON.

2 1/4 TON TRAVELLING HAND CRANE

1½ TON HAND CRANE

CAUTION

- TO BE SHUNTED WITH CARE -

BEFORE THIS CRANE IS ALLOWED TO TRAVEL ON THE MAIN LINE, THE SPRING BLOCKS MUST BE TAKEN OUT, THE JIB LOWERED, SECURED BY THE LOCKING SHAFT, AND THE TIE ROD PINS PUT IN. THE SPRING BLOCKS MUST BE PUT IN BEFORE LIFTING.

FOR MOVING SLOWLY WITH LOADS, THIS CRANE IS REGISTERED TO LIFT:-

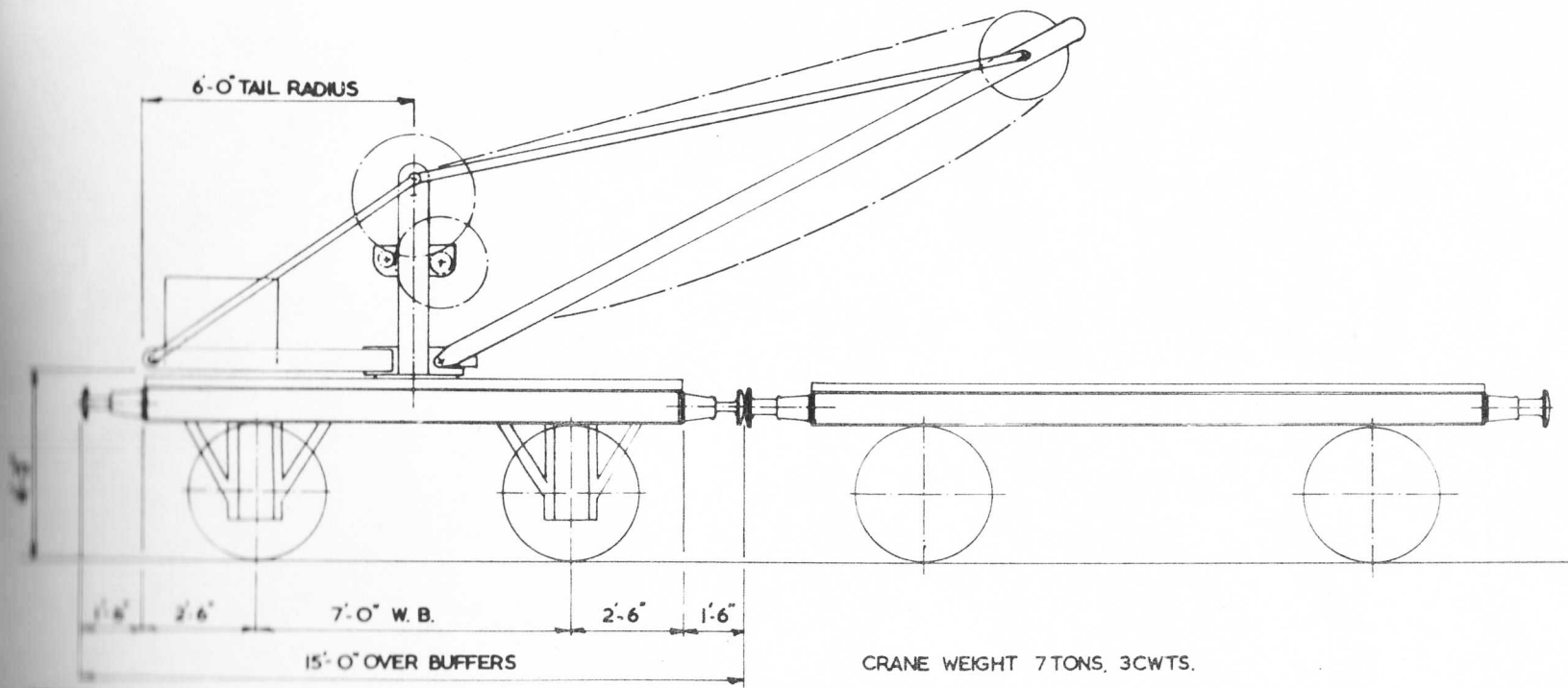
15 CWTs AT 12' 0" RADIUS

WHEN STATIONARY, WITH CLIPS SECURED TO RAILS, THIS CRANE IS REGISTERED TO LIFT:-

30 CWTs AT 12' 0" RADIUS

THESE INSTRUCTIONS ARE FOR WORKING ON LEVEL ROAD.

RADIUS	HT. OF LIFT	OVERALL CRANE HT.
12' 0"	13' 9"	17' 6"



CRANE 144 340 602/3/-/B/11.
G.W.R.

1½ TON TRAVELLING HAND CRANE