

B.R. CONTAINER STOCK DIAGRAM BOOK

© COPYRIGHT NOTICE

This PDF file has been created from the original book with permission of BRB Residuary Ltd who, retain copyright in the original document.

This PDF version by David Faulkner, 2014.

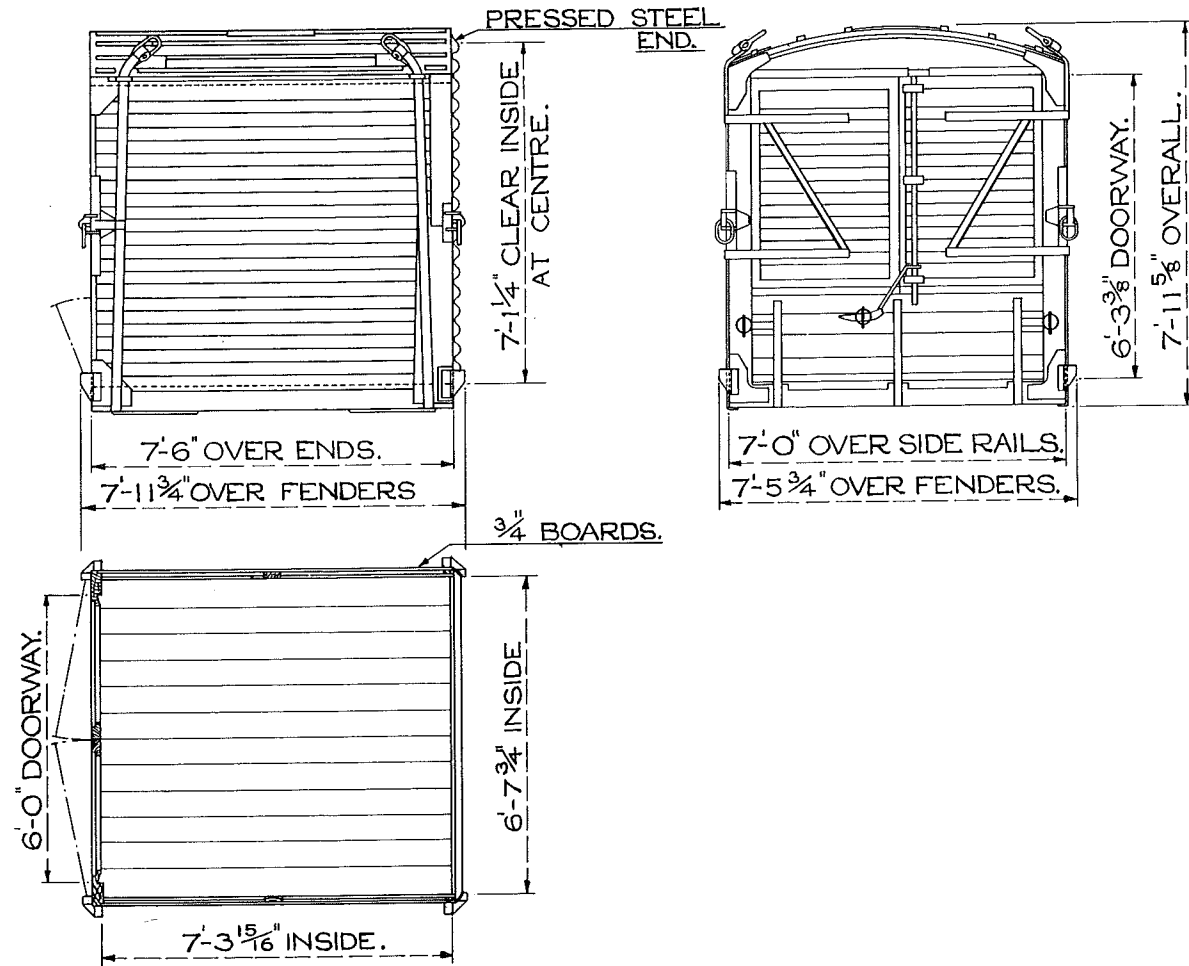
Individuals may: use, retain and print out this PDF version for their private information or for that of their non-commercial enthusiast society or railway club.

This document and any copies produced from it in any form may not be sold or lent for any payment in any form other than to cover copying or transmission costs. No reproduction permitted in any other form or circumstance without prior permission from the original copyright holder

INDEX			INDEX		
DIAG.No.	TYPE	LOT Nos.	DIAG. No.	TYPE	LOT Nos.
1	A	2116 2141 2244 2436 2555 2658 2829 2963 2964 2981 2995	202	FM	2263
		3078	203	FM	2359 PART 2435 2578 2681
2	A	2056 2124	204	FM	2558 2660
3	A	2335 2374 2958	205	FM	2672 2831 2892 2997
47	B	3174	210	CA	3475
49	B	2888 2965	230	FA	3468
50	BD	2017 2143 2246 PT.2333 2373 PT.2437 2556 2659 2785 2786	231	FA	3469
		2966 2929 2970 3079 3080 3131 3132 3161 3169	250	AF	2159 2260 2273
51	BD	2057 2100 2101	252	AF	2648 2890 3068 3136
52	BD	2213 PART 2333 PART 2437	253	AFU	2565 2673 2766 2890
53	BD	2330	256	AFP	3249
54	BD	3274	260	AFC	PART 3357
55	BD	3382	261	AFC	PART 3357
56	BD	3471 3493 3496 3549	275	AX	2142 2245 2506 2610 2665
75	BA	3436	300	AFX	2443
76	BA	3461	375	F	2067
100	BC & B	2262 2577 2680	400	LD	2307 2332 2563
101	BC & B	2444	450	L	2392 2433 2552 2762
125	BK	2059 2060	607	H	3545 3556 3580
126	BK	2334 2438 2557	625	J	3489 3507
127	BK	2830 2996 3105	626	J	3524
150	BM	2071 2114 2234	627	J	3546 3557 MODIFIED TO CARRY STRIP COIL SEE DIAG. 628
151	BM	2311 2564 2505	628	J	3546 3557
152	BM	2261	701	TOTE BIN	3594 3295
153	BM	2889 2982 2997	703	TOTE BIN	3294 3328 3385
181	C	3448	704	TOTE BIN	3477 3481 3482
200	FM	2115 2147			
201	FM	2336			

CONTAINER TYPE A.

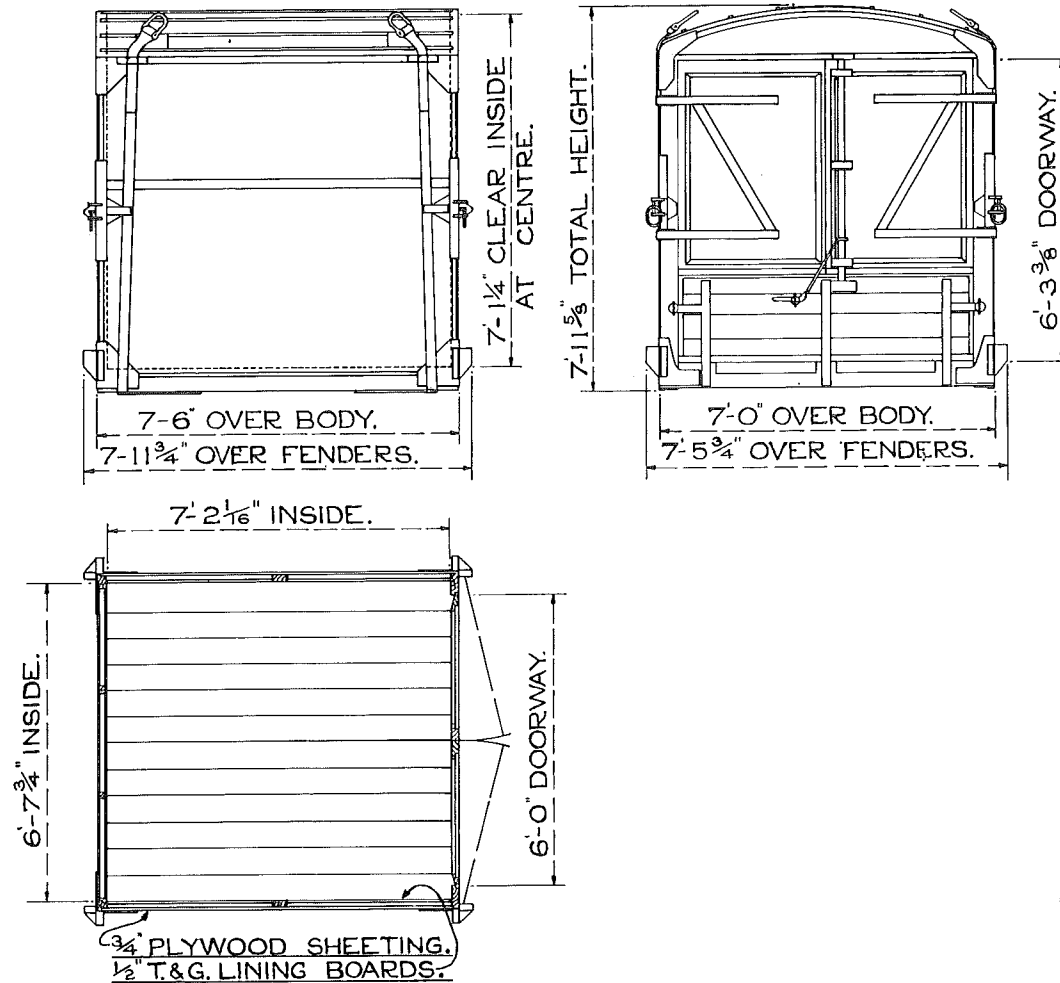
BR.3/I.



DRG. NO. - RCH. 2408.
CU. CAP. - 329 CU. FT.
CARR. CAP. - 4 TONS.
APPROX. TARE - 1T. - 2C. - 2Q.

CONTAINER. TYPE A.

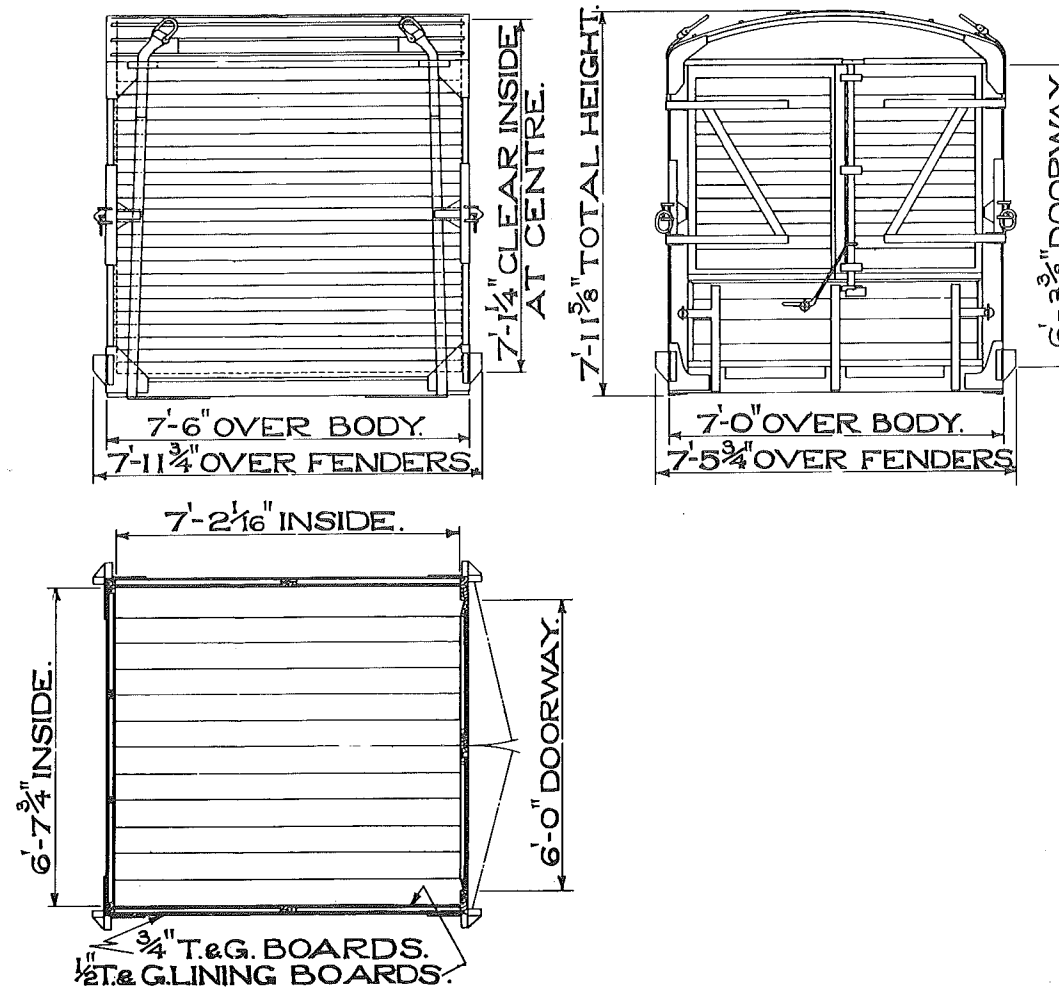
BR. 3/2



DRG. NO. - RCH. 2063.
 CU. CAP. - 322 CU. FT.
 CARR. CAP. - 4 TONS.
 APPROX. TARE. - 1T. - 2C. - 1Q.

CONTAINER TYPE "A".

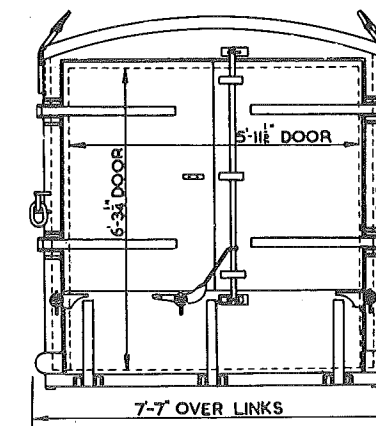
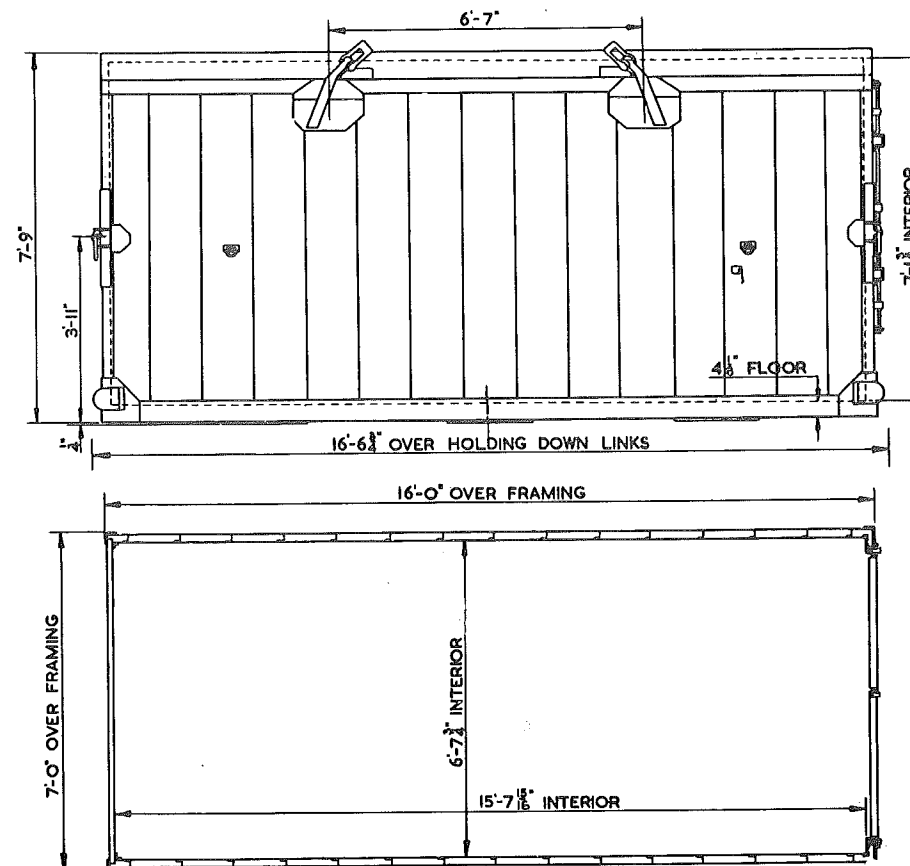
B.R.3/3.



DRG. NO.-RCH. 2055.
 CU. CAP. - 322 CU. FT.
 CARR. CAP.- 4 TONS.
 APPROX. TARE. - IT - IC. - OQ.

B TYPE CONTAINER

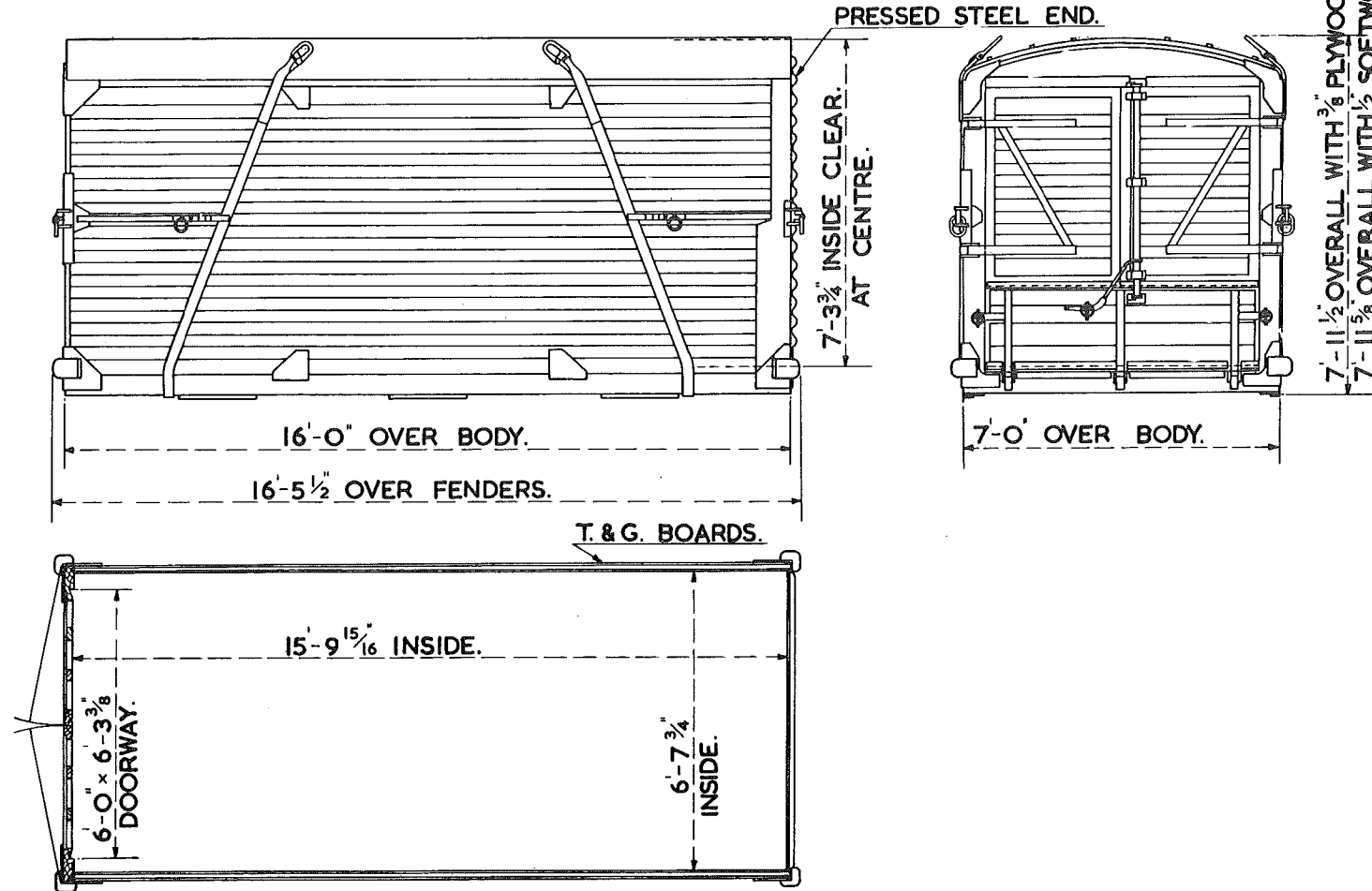
BR.3/47



DRG. NO. SW/DE/35232
 CU. CAP. 696 CU. FT.
 CARR CAP. 5 TONS.
 APPROX. TARE. 1T.-1C.-2Q.

CONTAINER TYPE B.

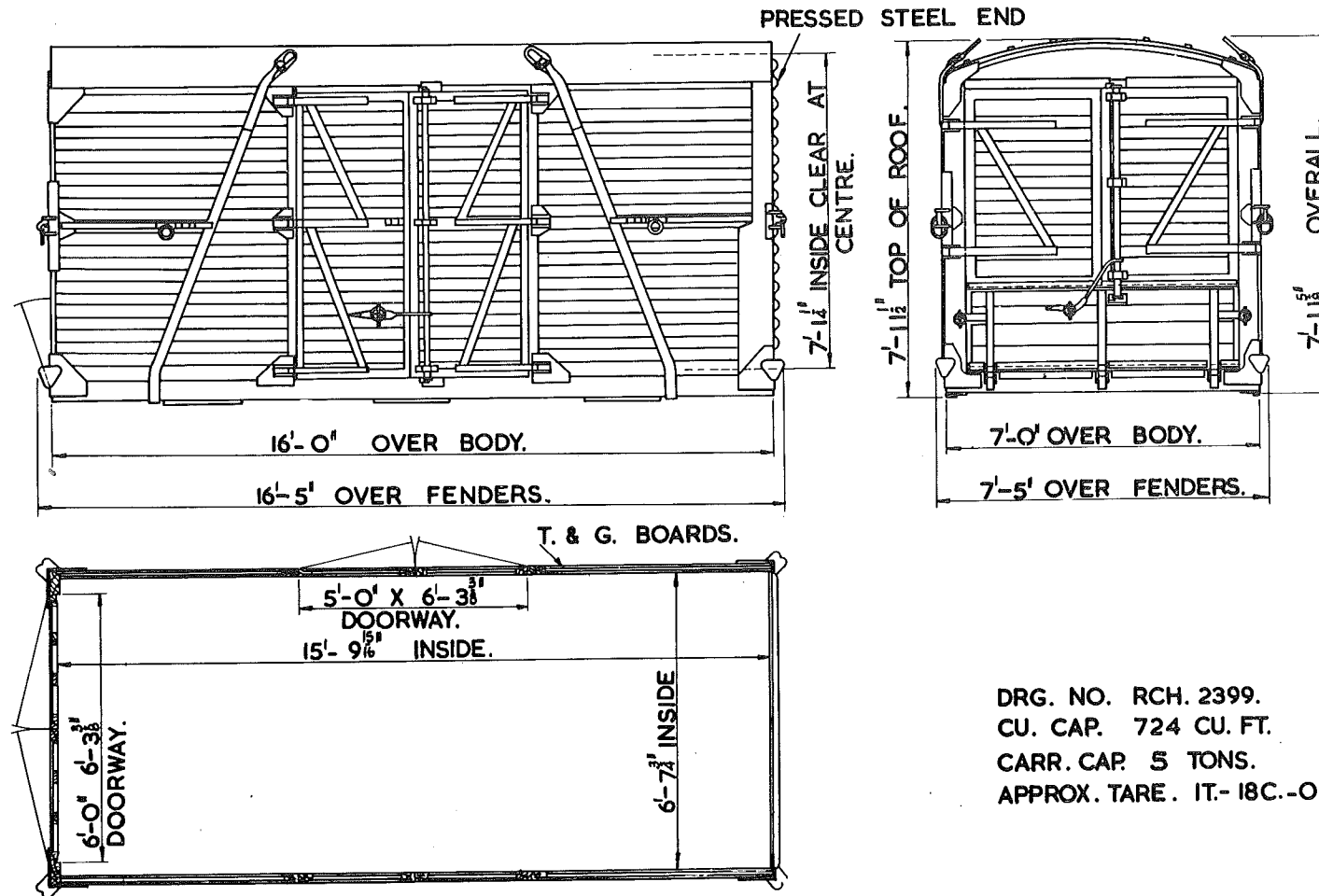
B R.3/49.



DRG. NO. RCH. 3009
 CU. CAP. 724CU. FT.
 CARR. CAP. 5 TONS.
 APPROX. TARE. 1T.-14C.- OQ.

CONTAINER TYPE BD

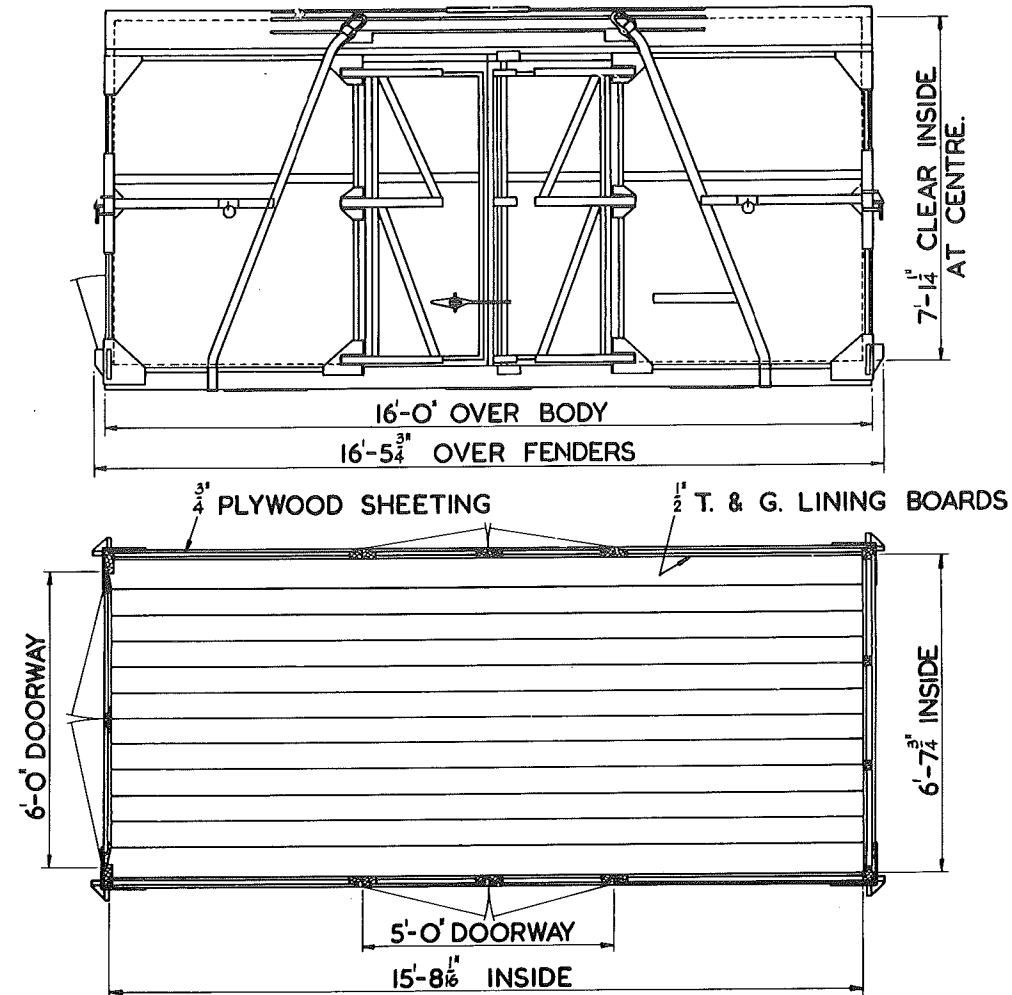
BR.3/50



DRG. NO. RCH. 2399.
CU. CAP. 724 CU. FT.
CARR. CAP. 5 TONS.
APPROX. TARE. 1T.-18C.-0Q.

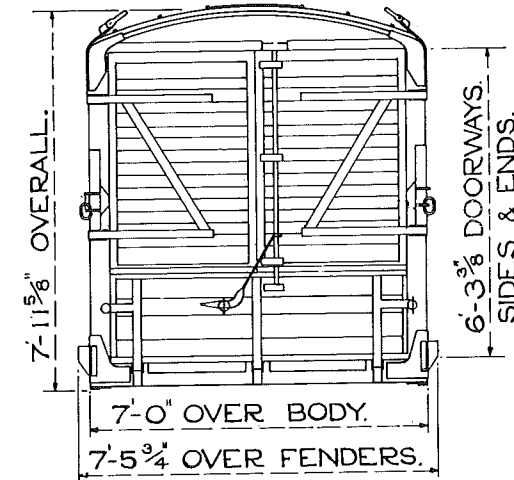
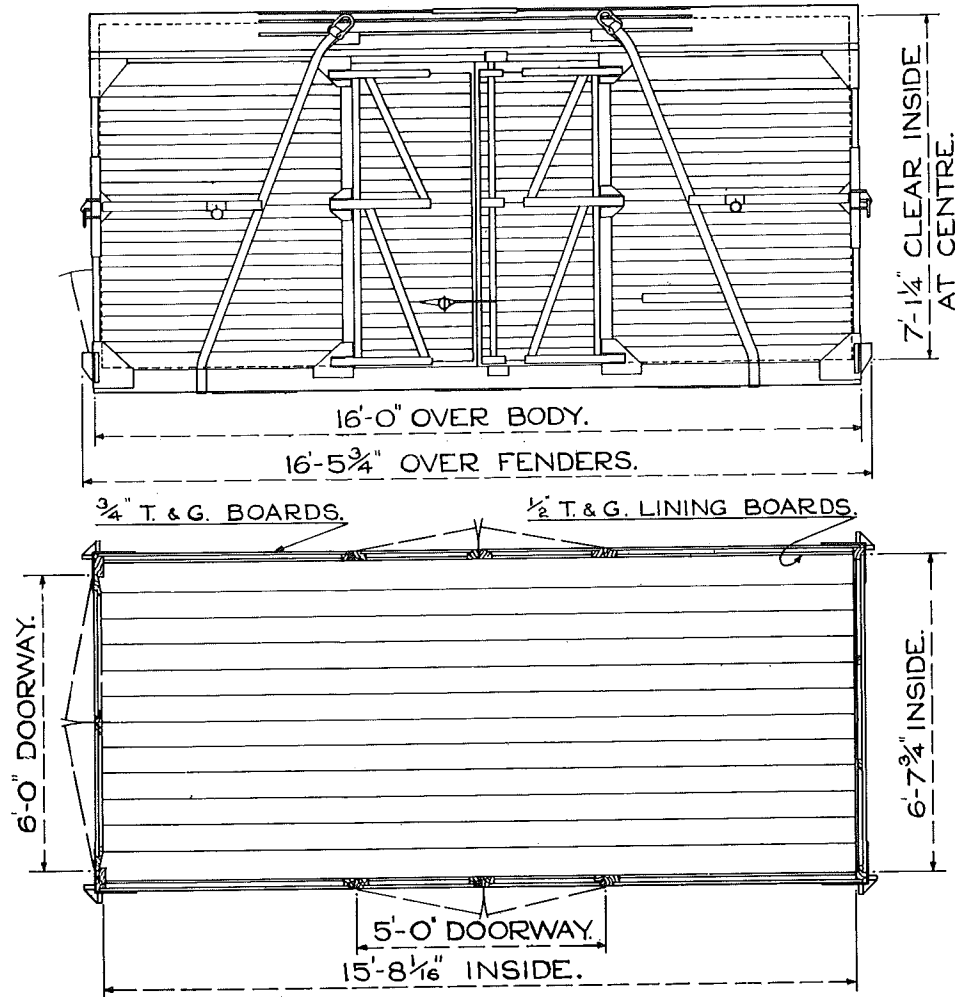
CONTAINER TYPE BD.

B.R.3/51



DRG. No. 17738N & RCH 2074.
 CUB. CAP. 717 CU. FT.
 CARR. CAP. 5 TONS.
 APPROX. TARE 2 TONS.

CONTAINER TYPE BD.

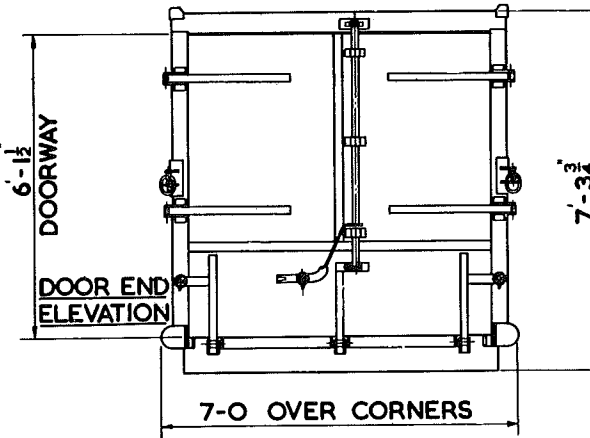
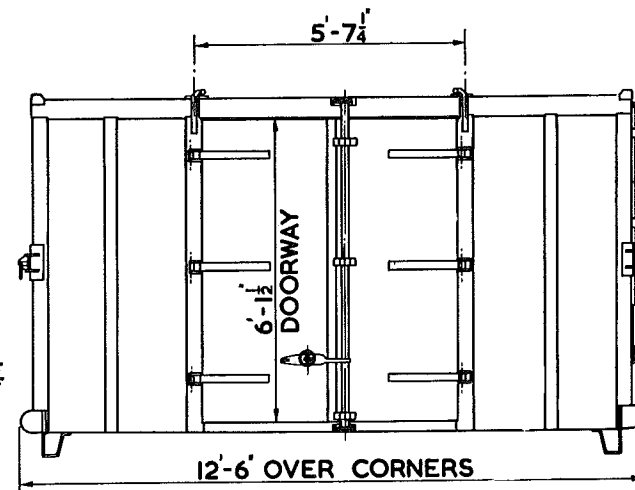


DRG. NO. RCH. 2069.
CU. CAP. 717 CU. FT.
CARR. CAP. 5 TONS.
APPROX. TARE IT.-16C.-3Q.

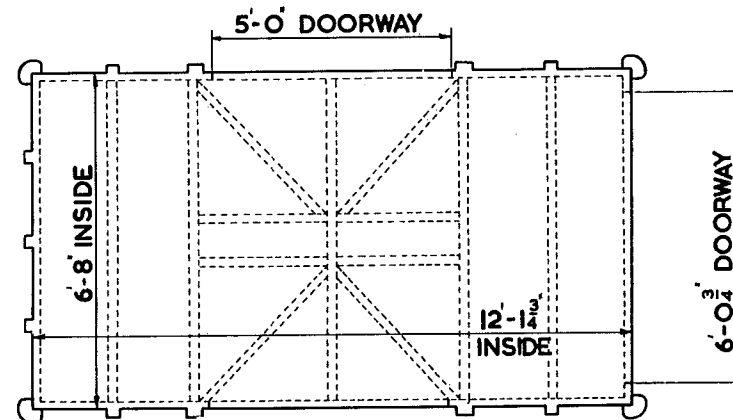
CONTAINER TYPE B.D.

B.R. 3/53

LEFT HAND SIDE
ELEVATION



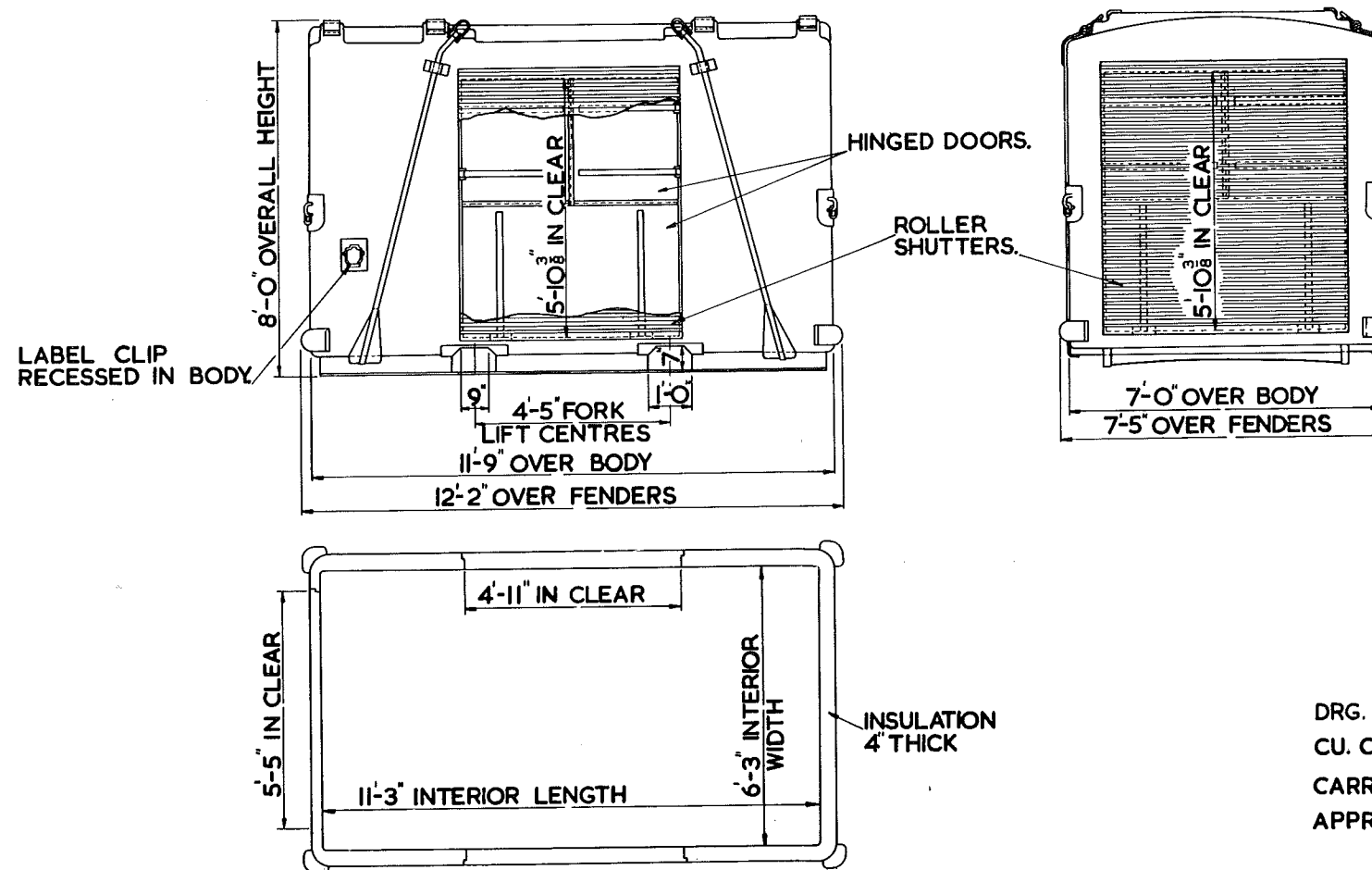
FLOOR PLAN



DRG. NO DL/3650
CU. CAP. 500 CU. FT.
CARR. CAP. 5 TONS.
APPROX. TARE 1T.-0C.-0Q.

CONTAINER TYPE BD (FIBREGLASS CONSTRUCTION)

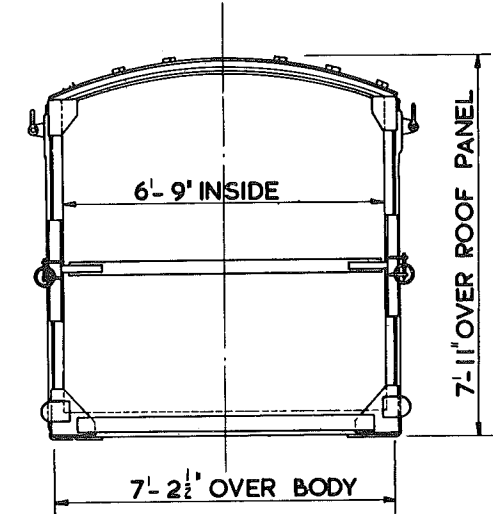
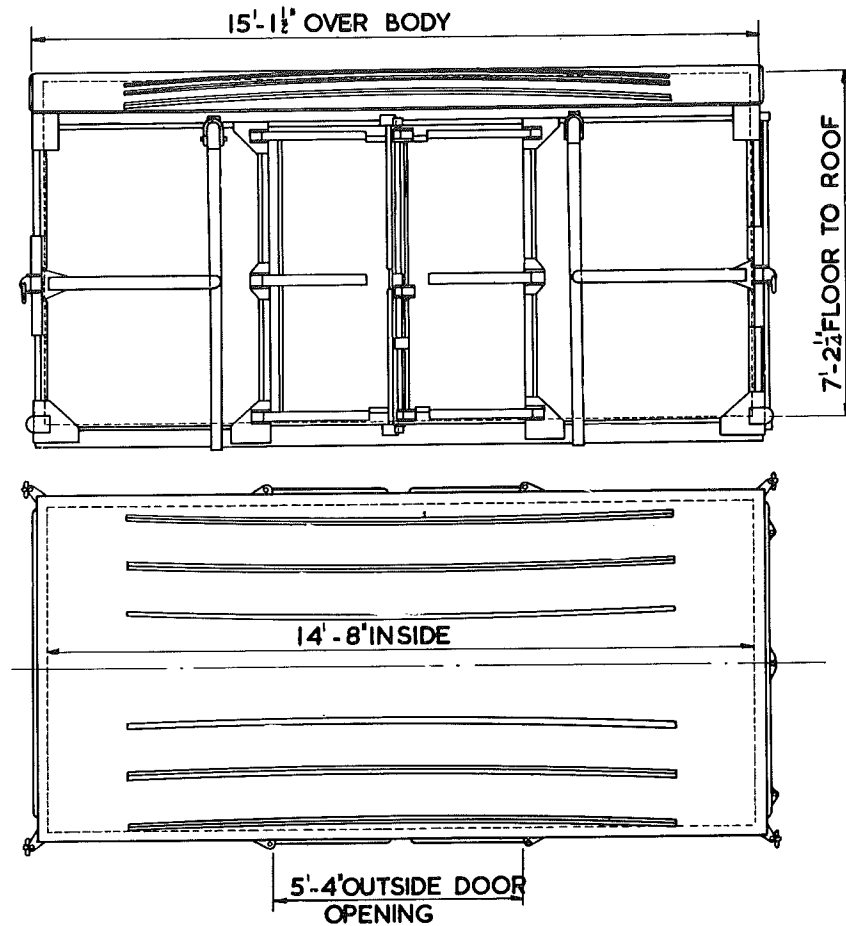
B.R. 3/54



DRG. NO.- SW/SW/882
CU. CAP - 440 CU. FT.
CARR. CU.- 5 TONS.
APPROX. TARE.- 1T.-17C.-0Q.

'BD' TYPE COVERED PALLET CONTAINER (INSULATED)

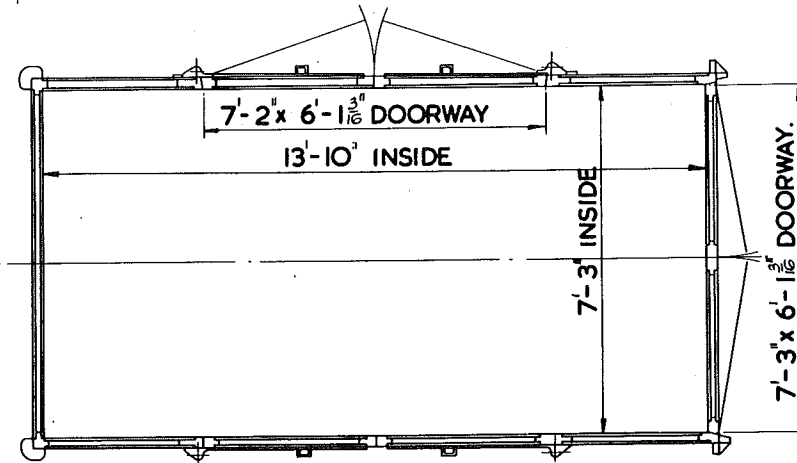
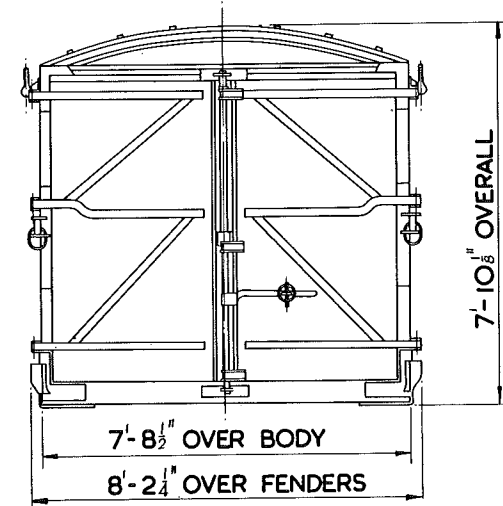
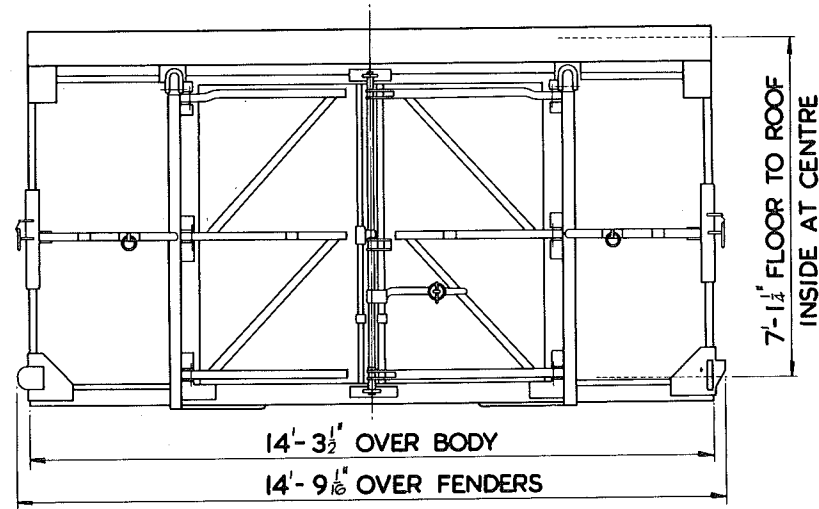
B.R. 3/55.



DRG. NO. DE/36153
CU. CAP. 640 CU. FT.
CARR. CAP. 4 1/2 TONS.
APPROX. TARE. 2T.-13C.-2Q.

BD TYPE CONTAINER INSULATED

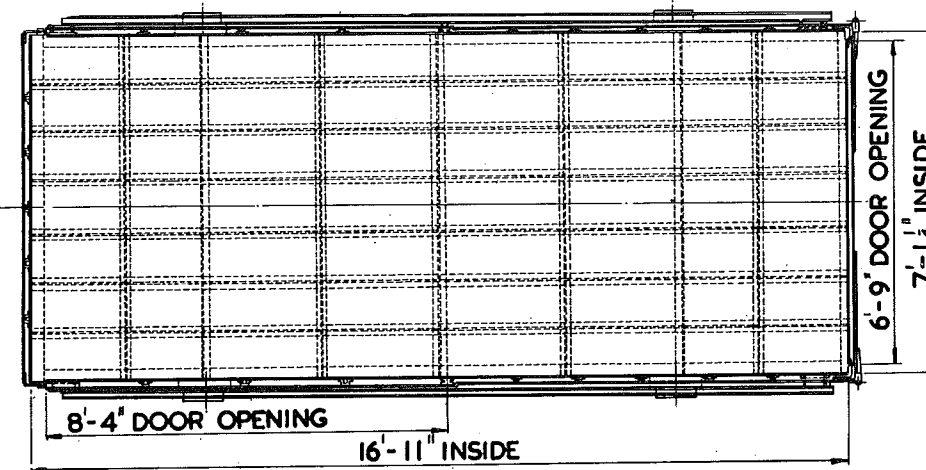
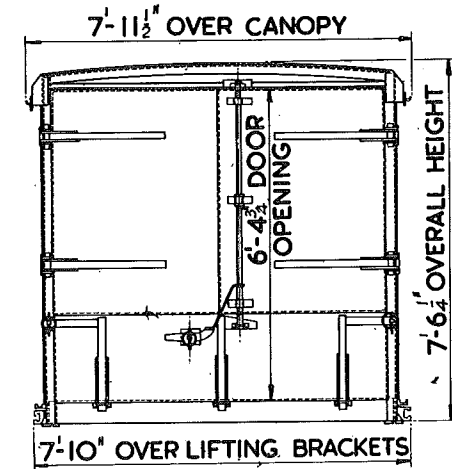
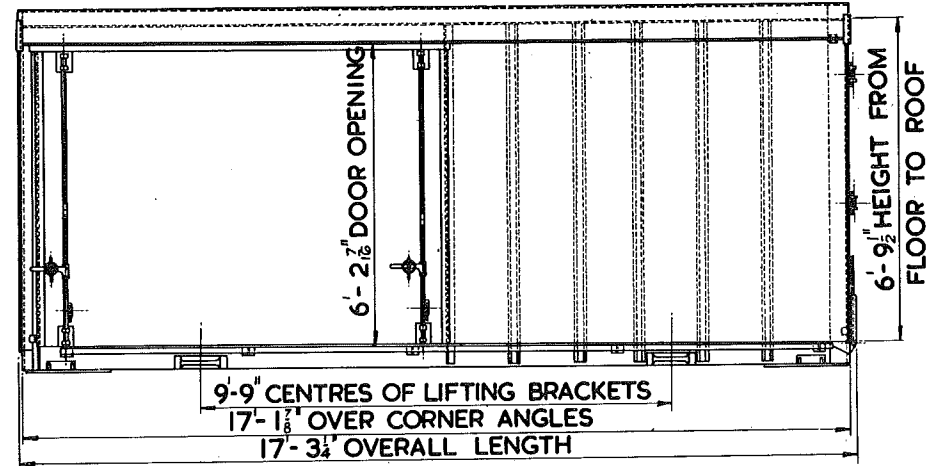
BR.3/56



DRG. NO. SW/DE/36824
CU. CAP. 668 CU. FT.
CARR CAP. 7 TONS.
APPROX. TARE 2T.-18C.-3Q

BA. TYPE CONTAINER (LIGHT ALLOY)

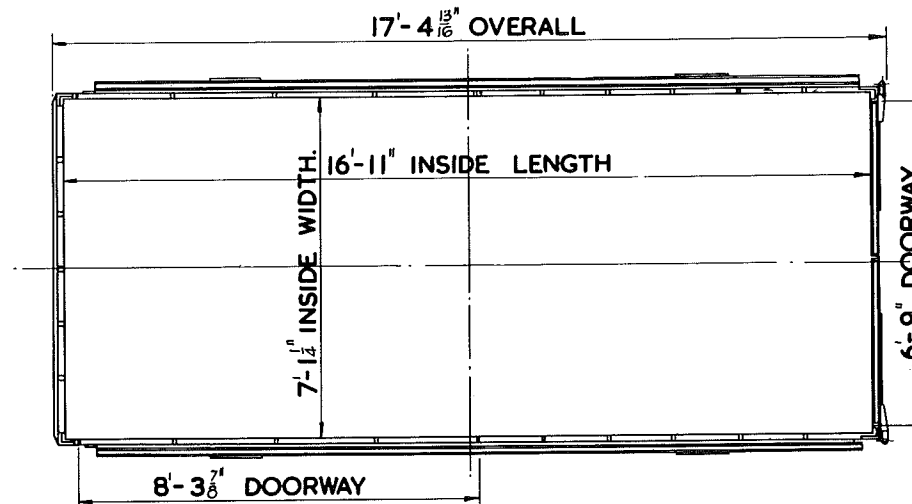
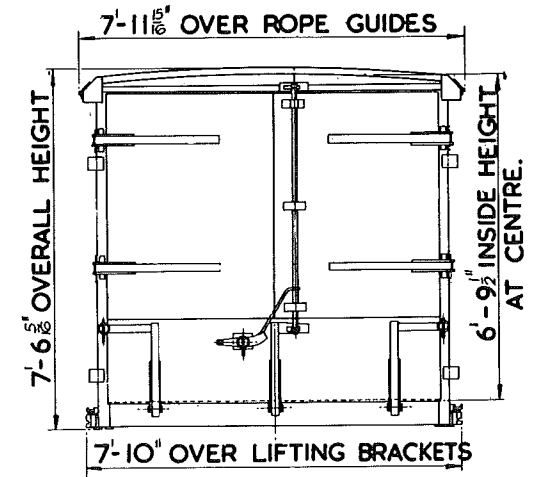
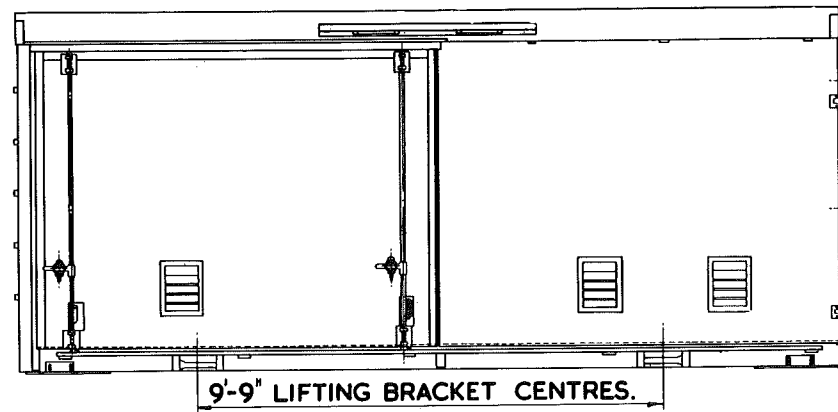
B.R.3/75



DRG. NO. DE/11508.
CU. CAP. 810 CU. FT.
CARR CAP. 10 TONS.
APPROX. TARE. 17-17C.OQ.

"BA" TYPE CONTAINER (LIGHT ALLOY)

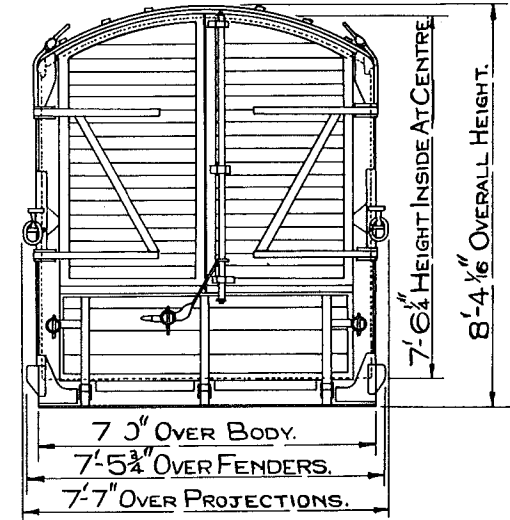
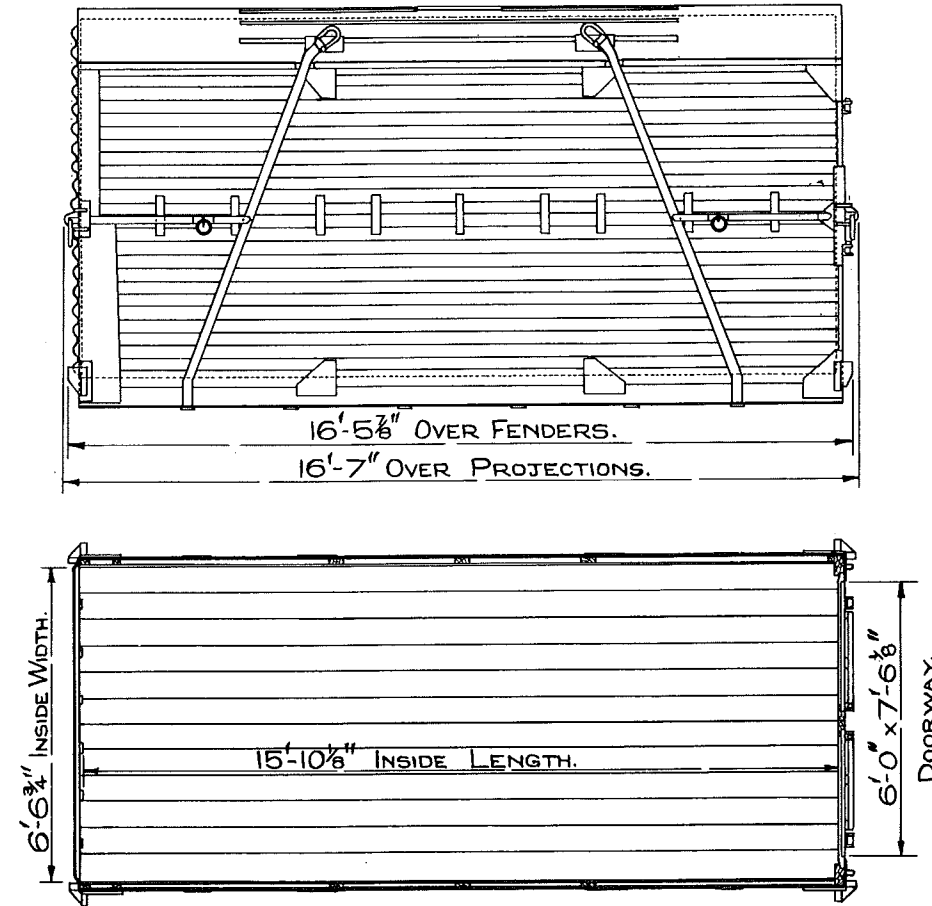
BR.3/76.



DRG. NO. DE/11680.
CU. CAP. 807 CU. FT.
CARR. CAP. 10 TONS.
APPROX. TARE 1T-18C-1Q

CONTAINER TYPE "B" & "BC"

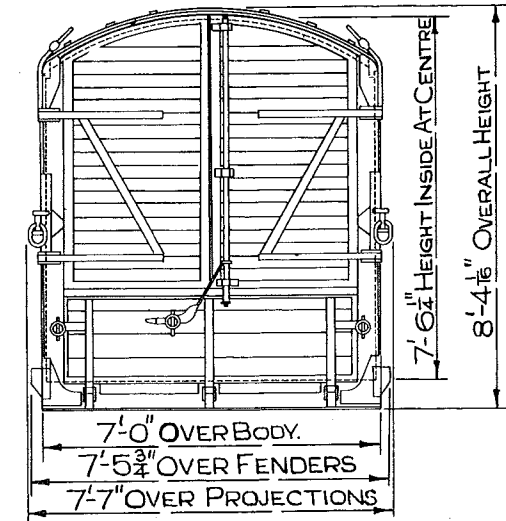
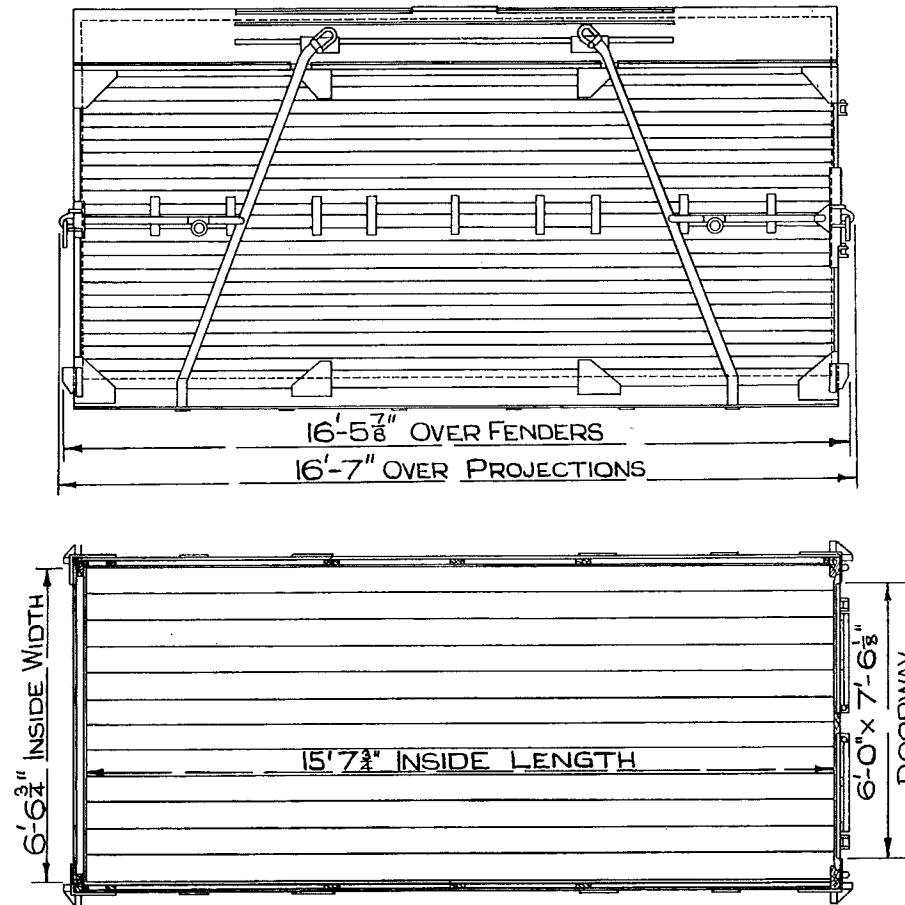
B.R. 3/100.



DRG. NO. RCH. 2507.
 CARR. CAP. (TYPE 'B'-5 TONS) (TYPE 'BC'-
 4 TONS OR 76 CYCLES)
 CU. CAP. 747 CU. FT.
 APPROX. TARE. 2T.-5C.-2Q.

CONTAINER TYPE "B" & "BC"

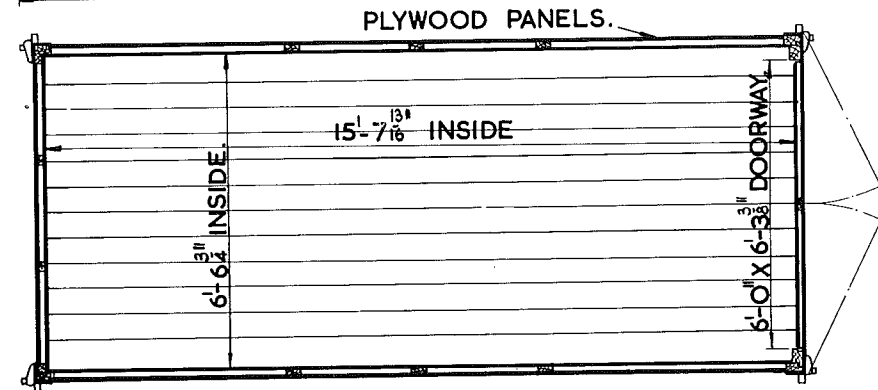
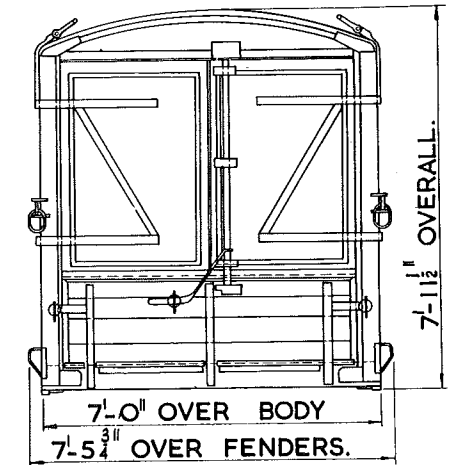
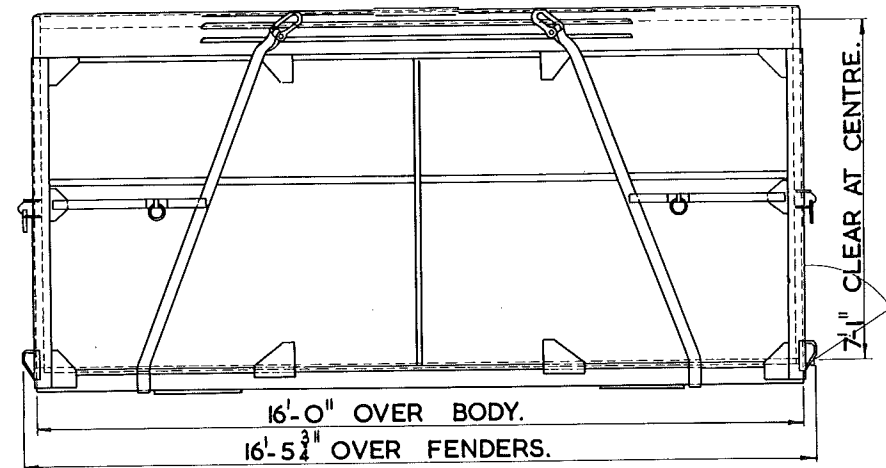
B.R. 3/101.



DRG. NO. RCH.2507A & RCH. 2982.
 CU. CAP. 735 CU. FT.
 CARR. CAP. (TYPE 'B') 5 TONS. (TYPE 'BC')
 4 TONS OR 76 CYCLES.
 APPROX. TARE. 2T.-OC.- 2Q.

CONTAINER TYPE 'BK'

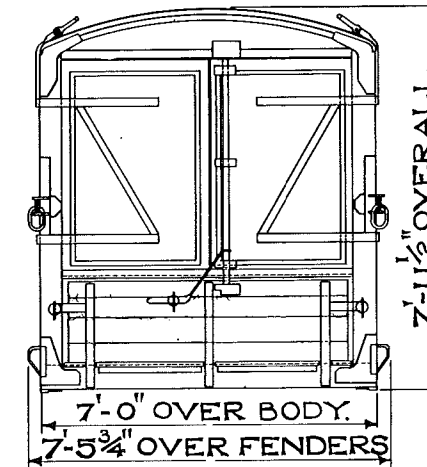
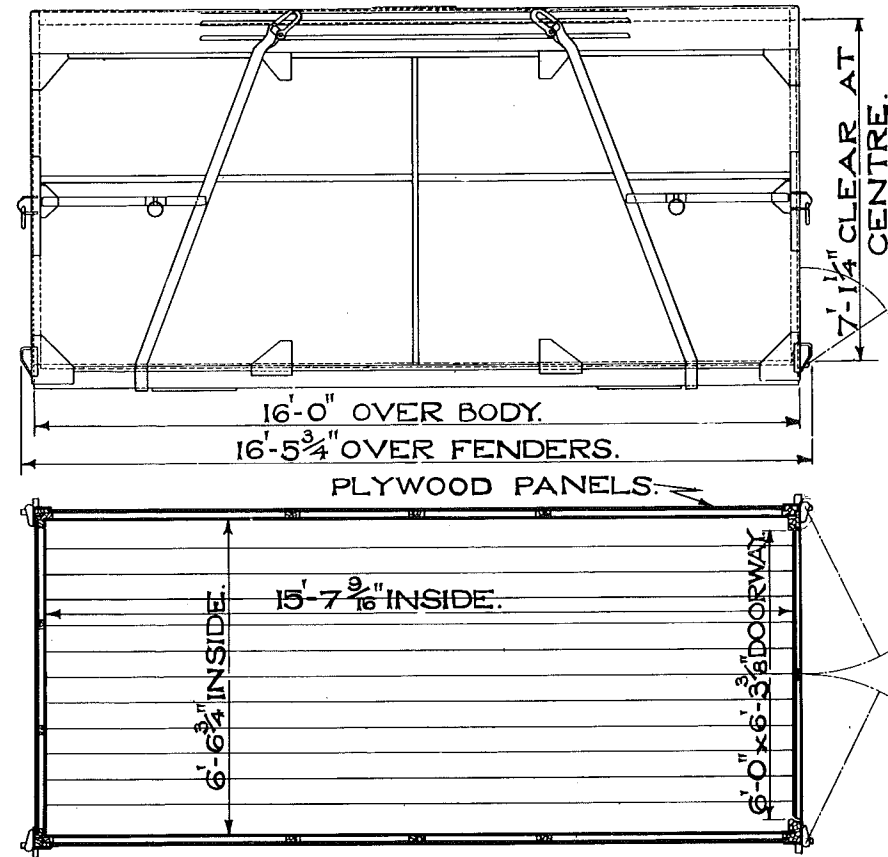
B.R.3/125.



DRG. NO. 17763 N.
CU. CAP. 704 CU. FT.
CARR. CAP. 4 TONS.
APPROX. TARE. 1T.-13C.-3Q.

CONTAINER TYPE 'BK'

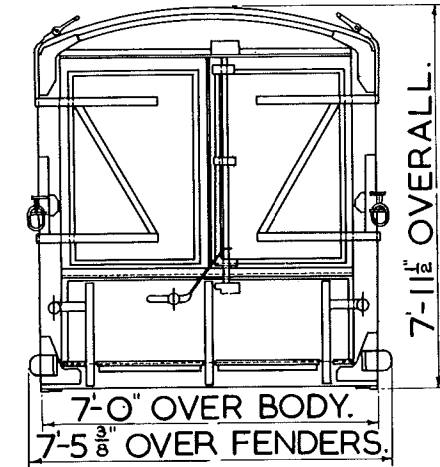
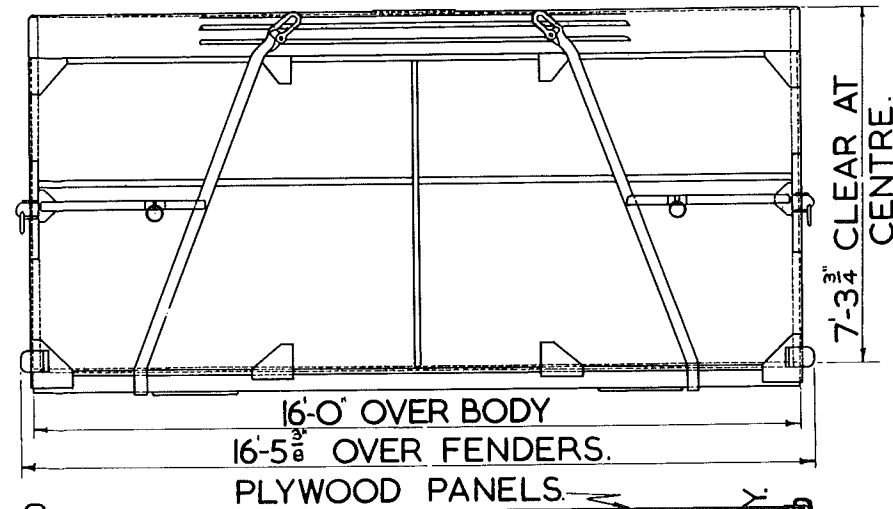
BR. 3/126



DRG. NO. RCH. 2108.
 CU. CAP. 708 CU. FT.
 CARR. CAP. 4 TONS.
 APPROX. TARE. IT. - 12C. - 3Q.

CONTAINER TYPE 'B K'.

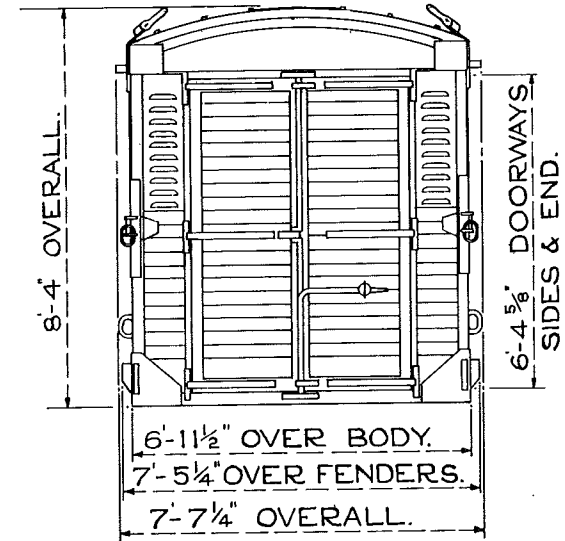
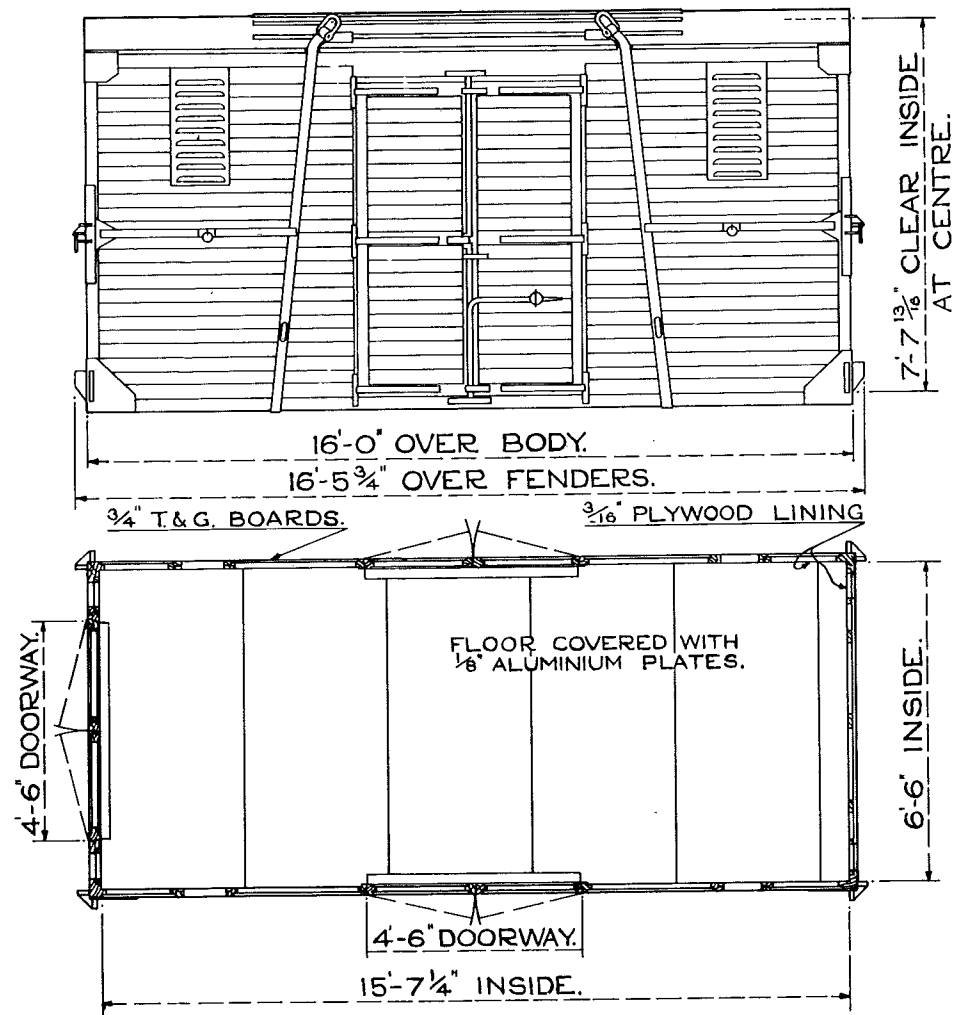
B.R. 3/127



DRG. NO. RCH. 3030.
 CU. CAP. 708 CU. FT.
 CARR CAP. 4 TONS.
 APPROX. TARE. 1T.-12C.-3Q.

CONTAINER TYPE BM.

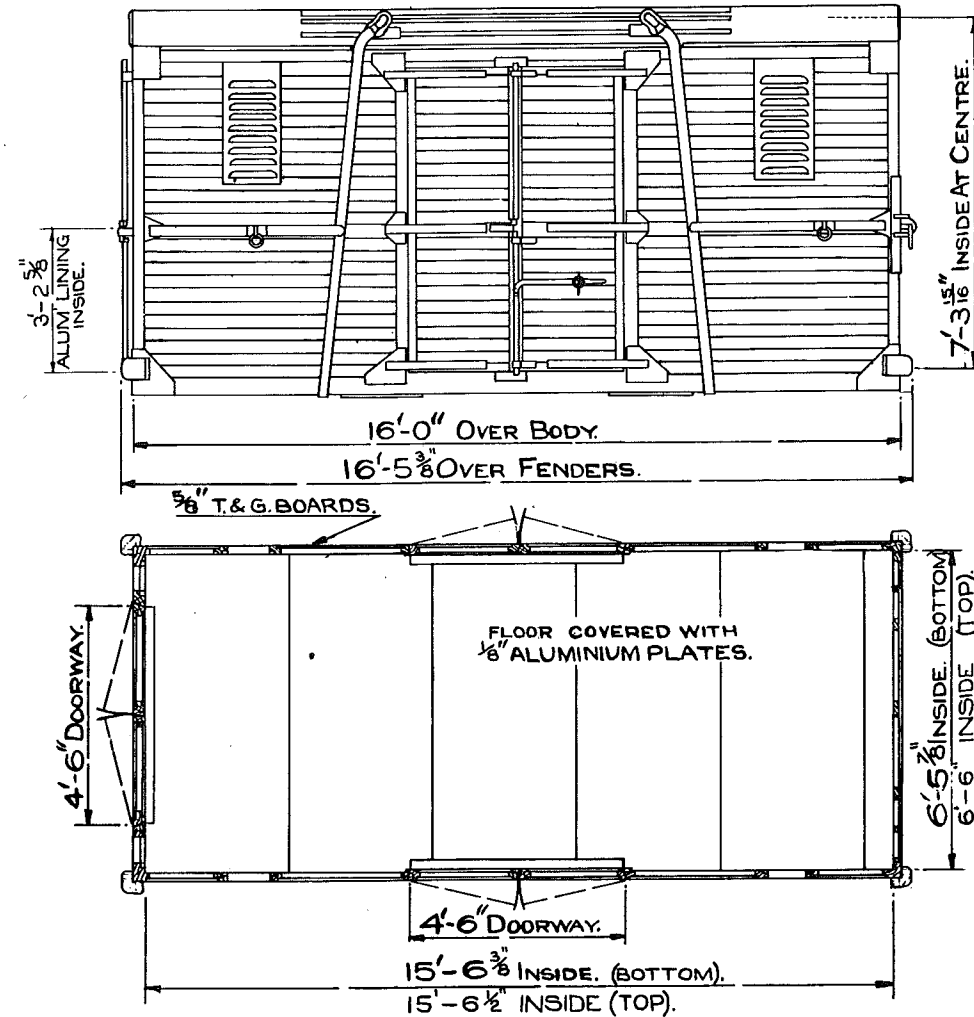
BR. 3/150



DRG. No.-13/3970
CU. CAP-760 CU. FT.
CARR. CAP-4 TONS.
APPROX. TARE-2T-6C-2Q.

CONTAINER TYPE "BM"

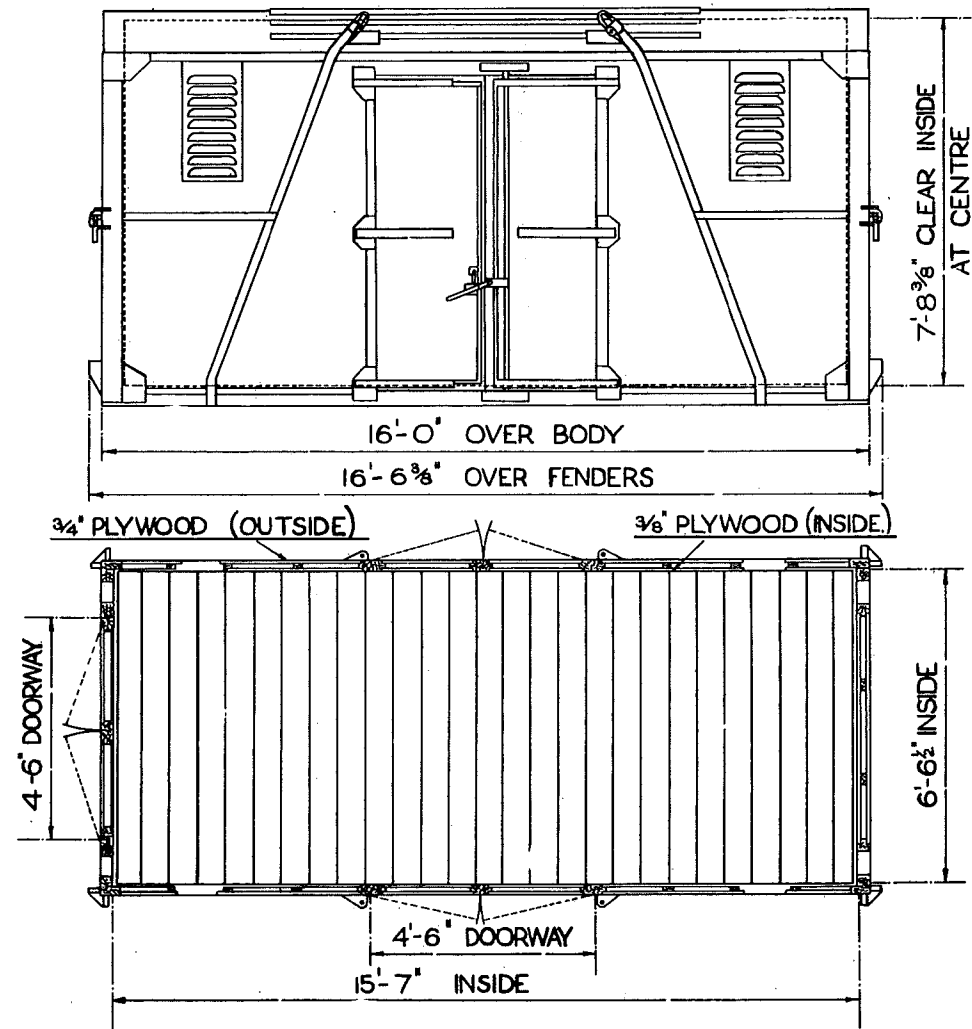
B.R. 3/151.



DRG. NO. RCH. 2854
 CU. CAP. 725 CU. FT.
 CARR. CAP. 4 TONS.
 APPROX. TARE. 2T-7C-OQ.

CONTAINER. TYPE - "BM."

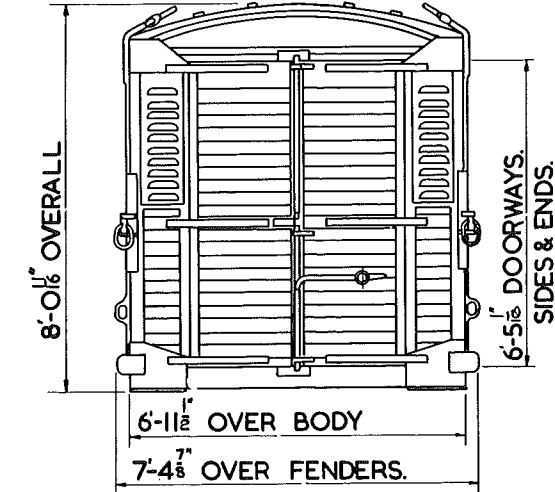
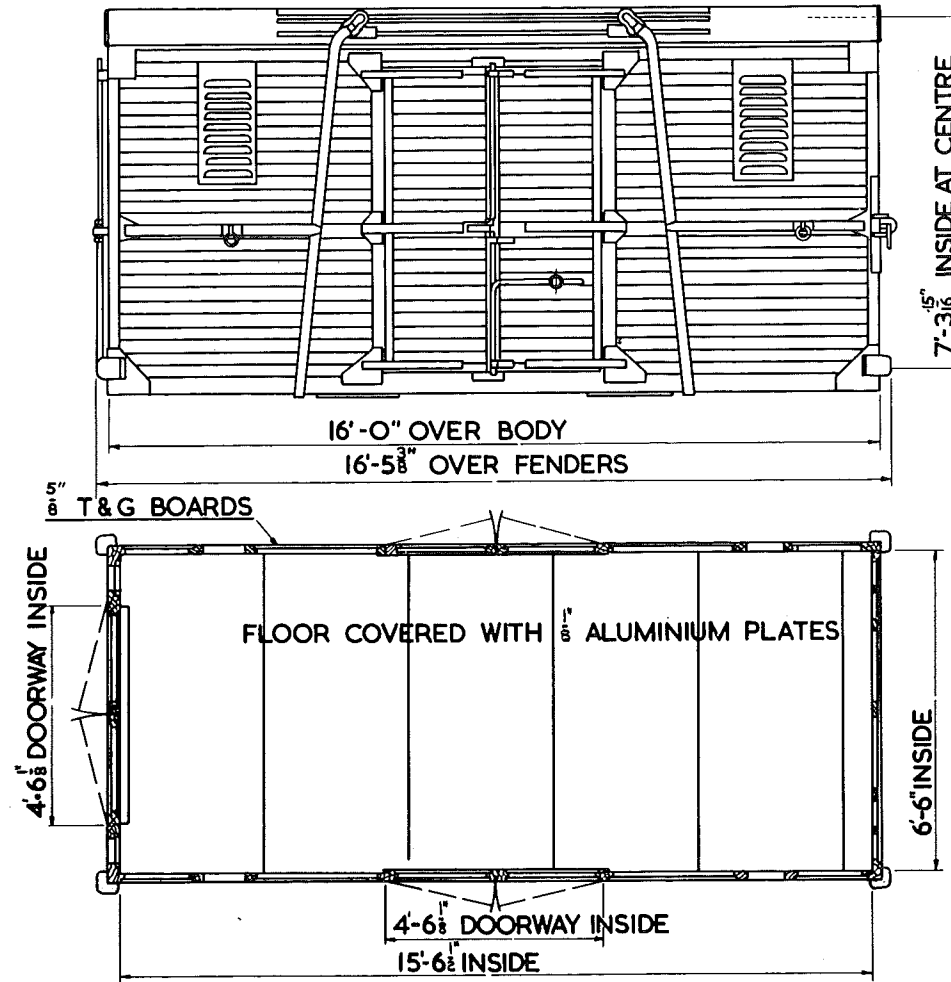
B.R. 3/152.



DRG. NO. 17864 N.
 CU. CAP. 760 CU. FT.
 CARR. CAP. 4 TONS.
 APPROX. TARE. 2T.-6C.-OQ.

CONTAINER TYPE "BM"

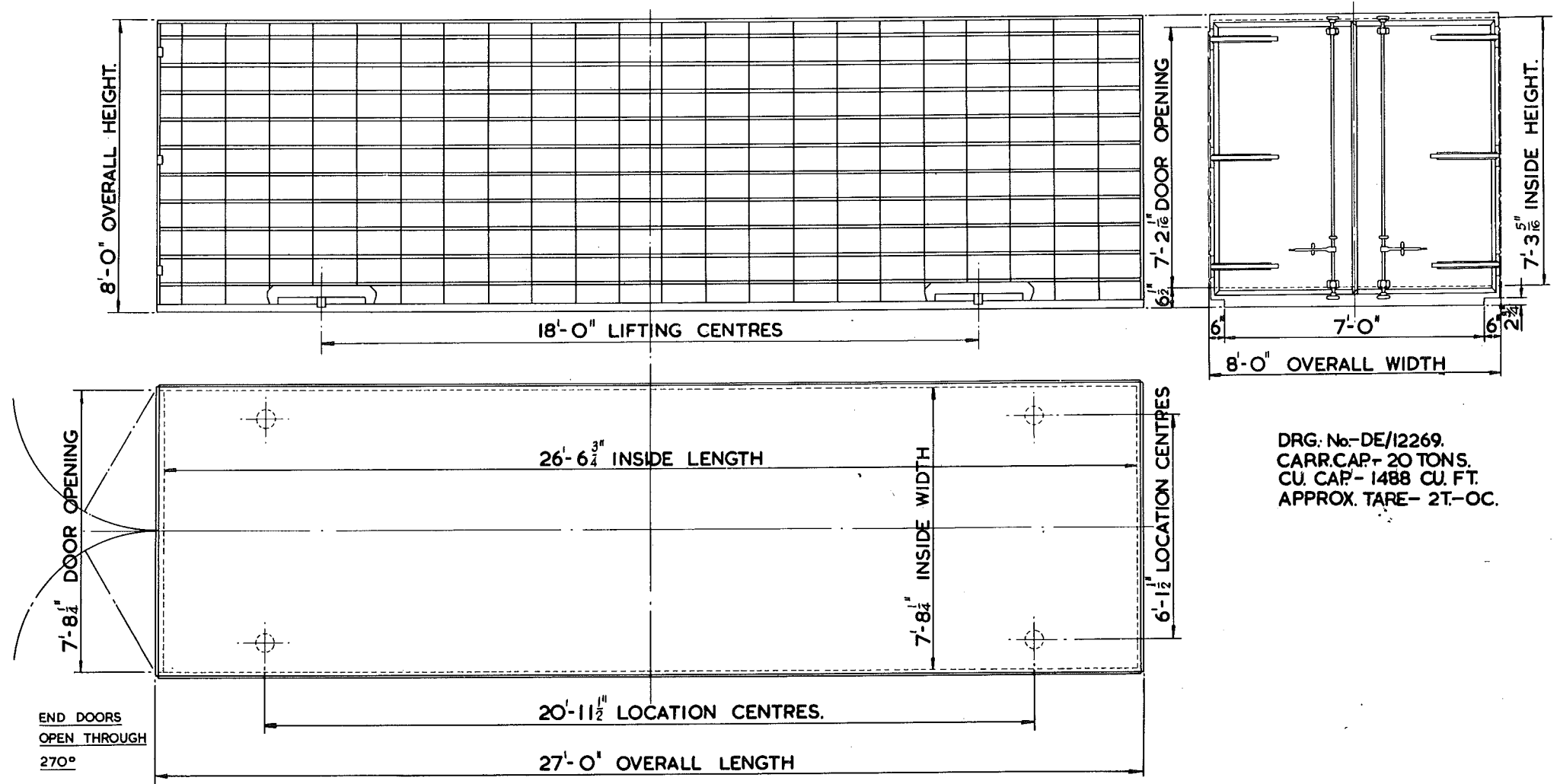
B.R. 3/153



DRG. NO. RCH. 3028.
 CU. CAP. 725 CU. FT.
 CARR. CU. 4 TONS.
 APPROX. TARE. 2T-8C-OQ.

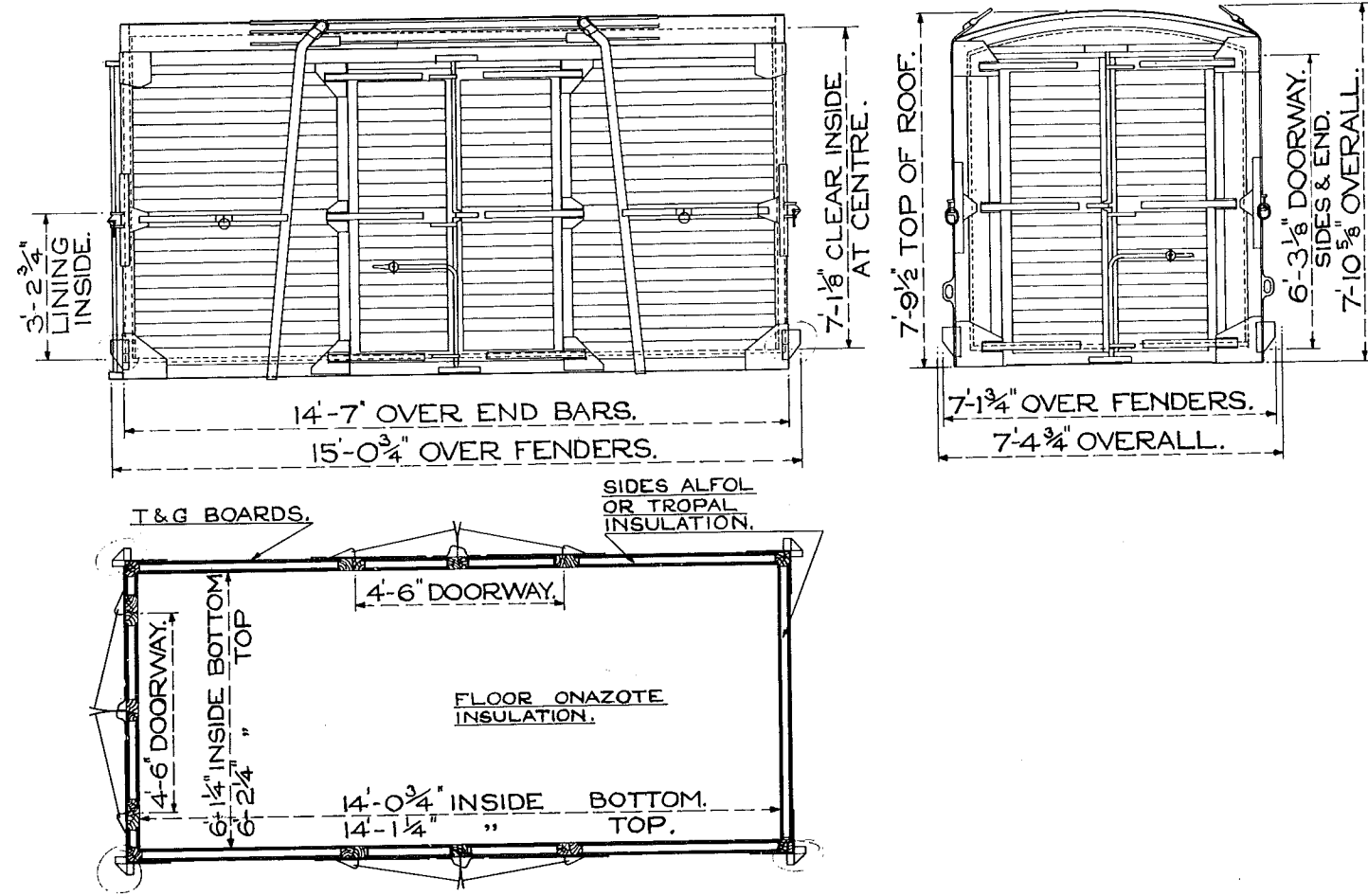
27 FT. COVERED CONTAINER TYPE C FREIGHTLINER

BR. 3/181



CONTAINER TYPE FM.

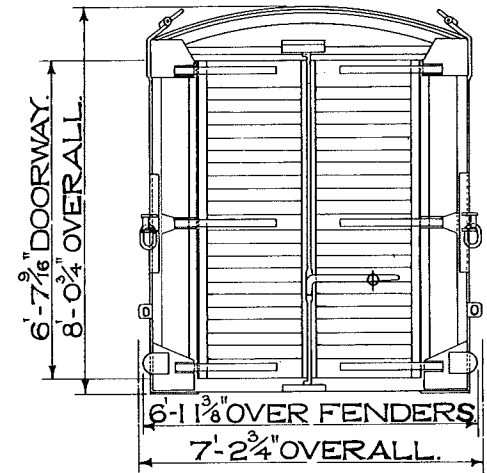
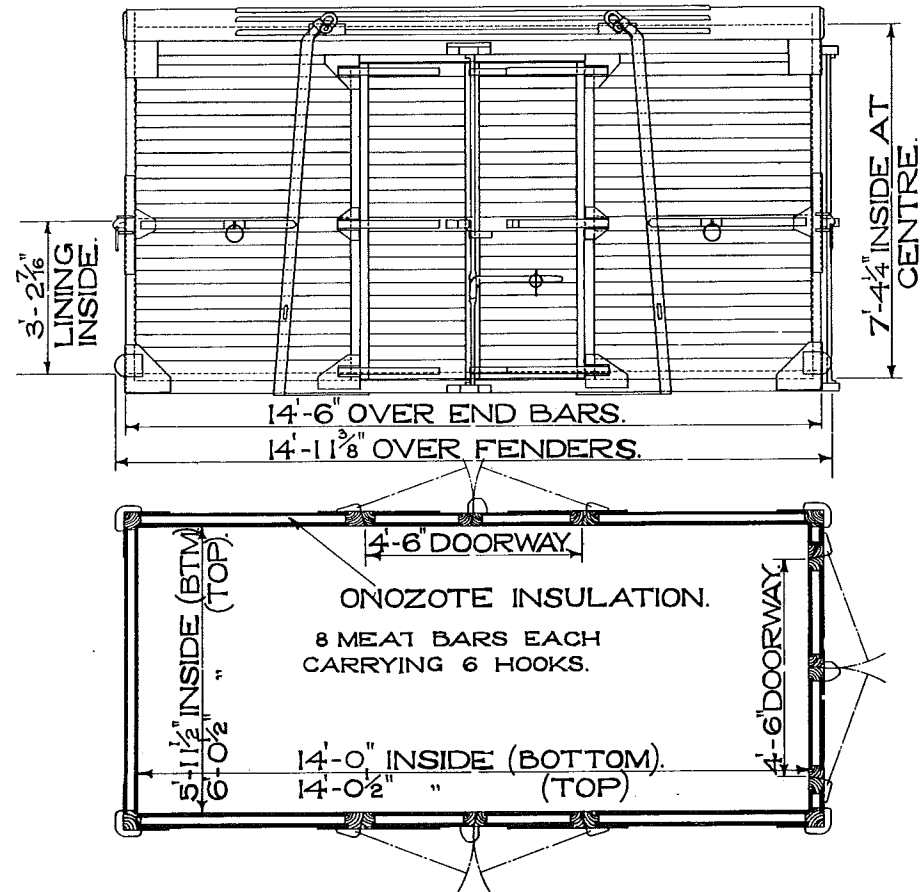
BR. 3/200.



DRG. NO. - 13/3886A
 CU. CAP. - 600 CU. FT.
 CARR. CAP. - 4 TONS.
 APPROX. TARE - 2T-3C-2Q.

MEAT CONTAINER TYPE FM.

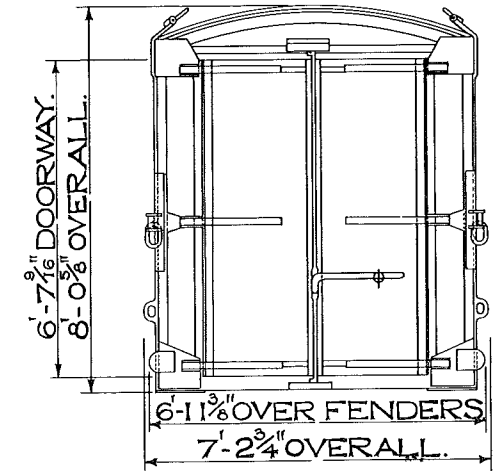
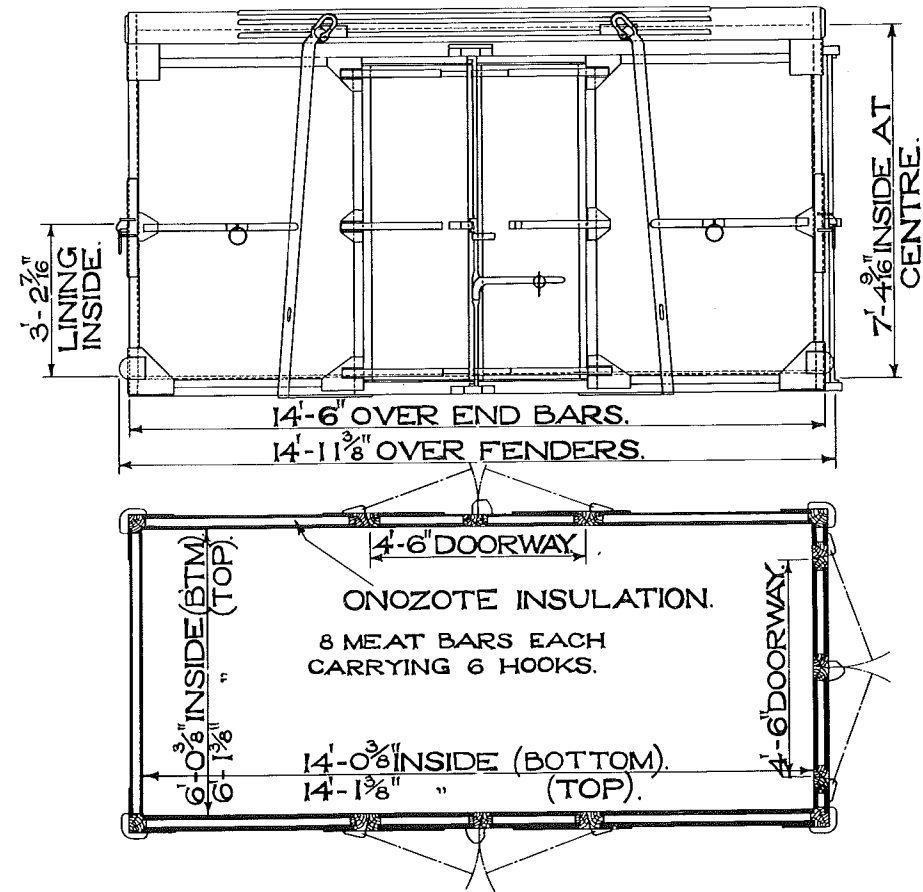
BR. 3/201.



DRG. No. - RCH2615
 CU. CAP. - 632 CU. FT.
 CARR. CAP. - 4 TONS.
 APPROX. TARE - 2T-2C-1Q.

MEAT CONTAINER TYPE 'FM.'

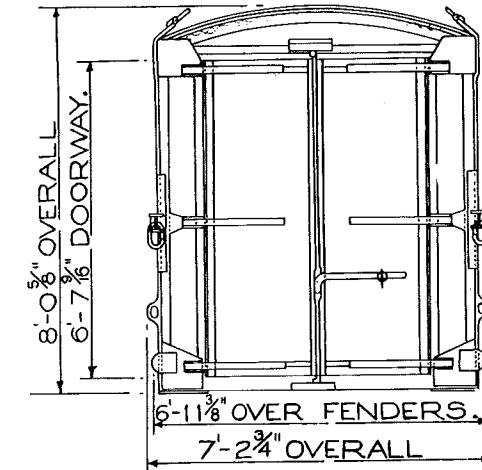
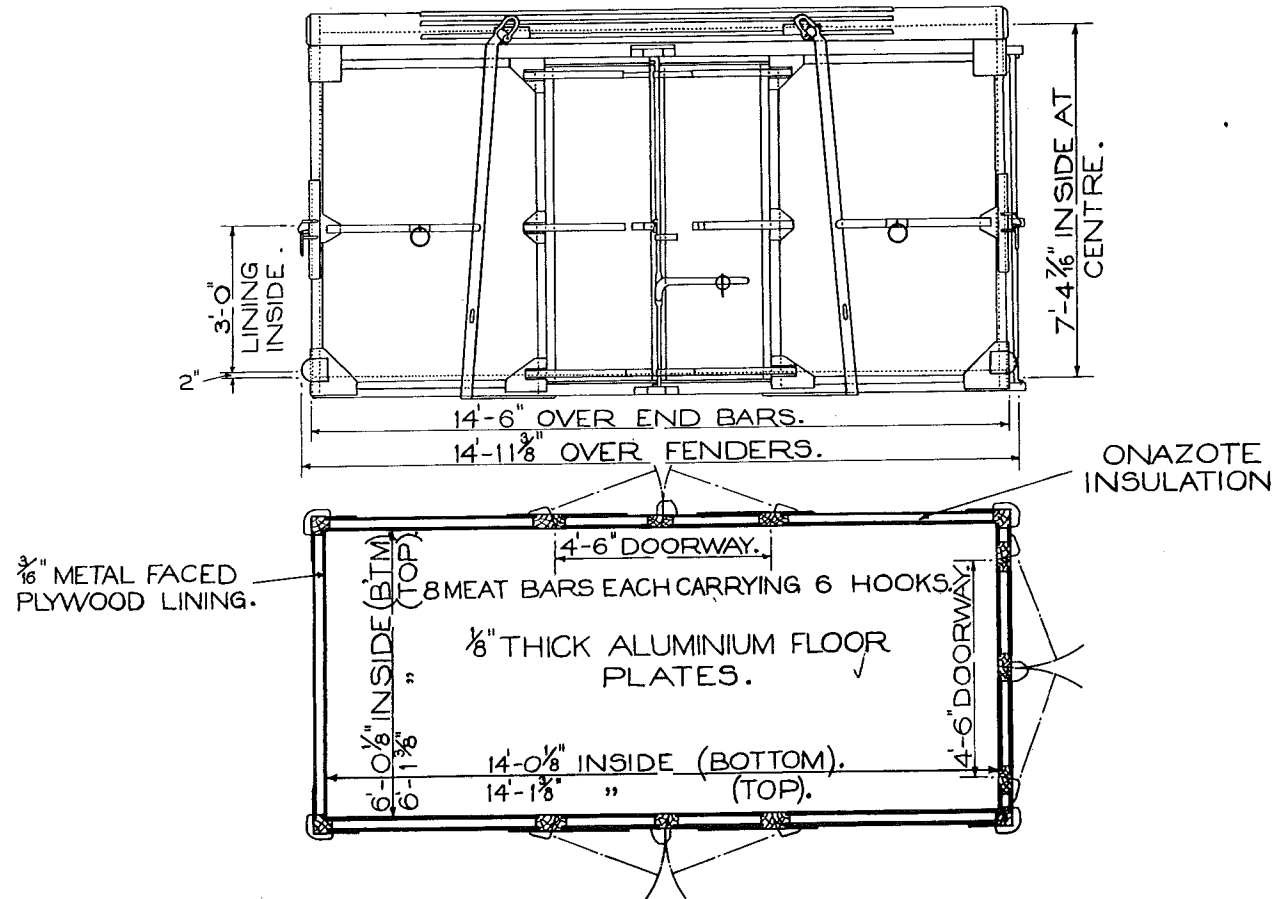
BR. 3/202.



DRG. No.—RCH2649
CARR. CAP—4 TONS.
CU. CAP—632 CU. FT.
APPROX. TARE—2 T.—1 C.

MEAT CONTAINER TYPE F.M.

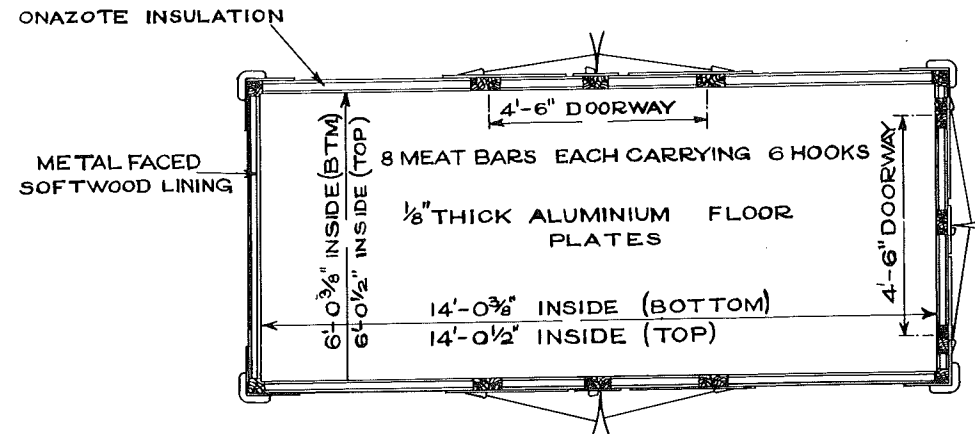
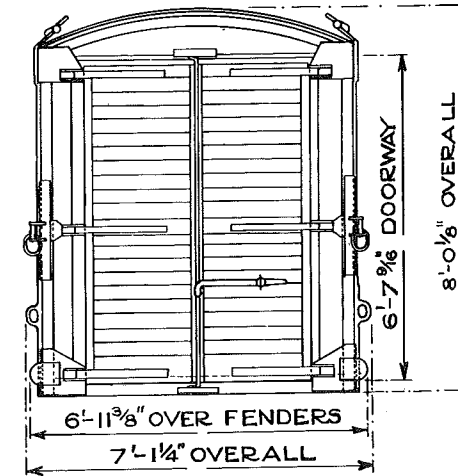
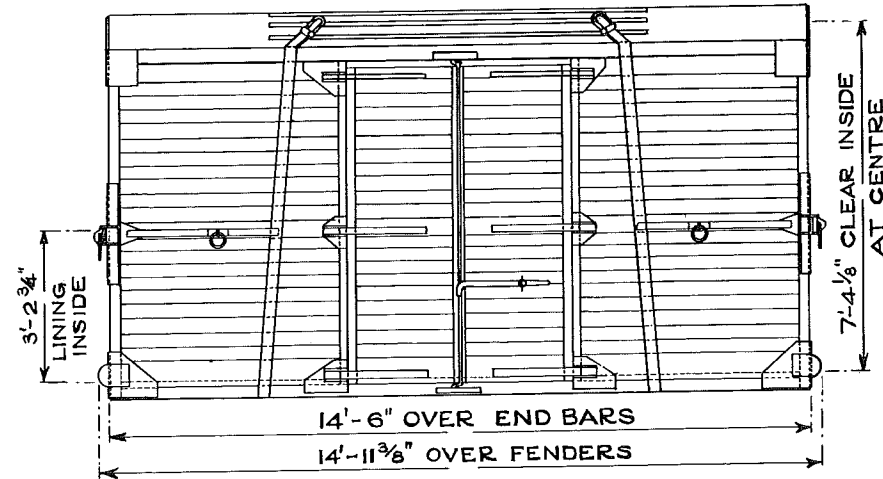
B.R 3/203.



DRG. No. — RCH2894.
CU. CAP. — 632 CU. FT.
CARR. CAP. — 4 TONS.
APPROX. TARE — 2 T. — 2 C.

MEAT CONTAINER TYPE "F.M."

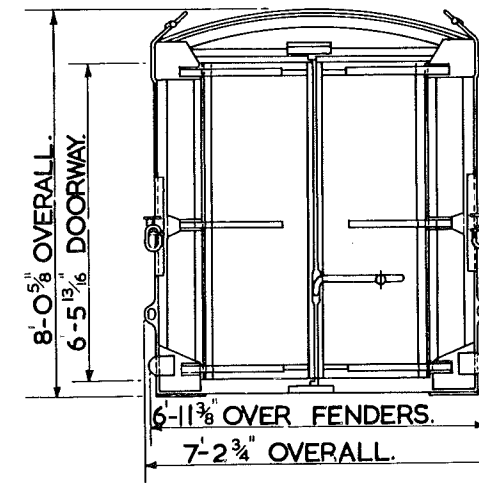
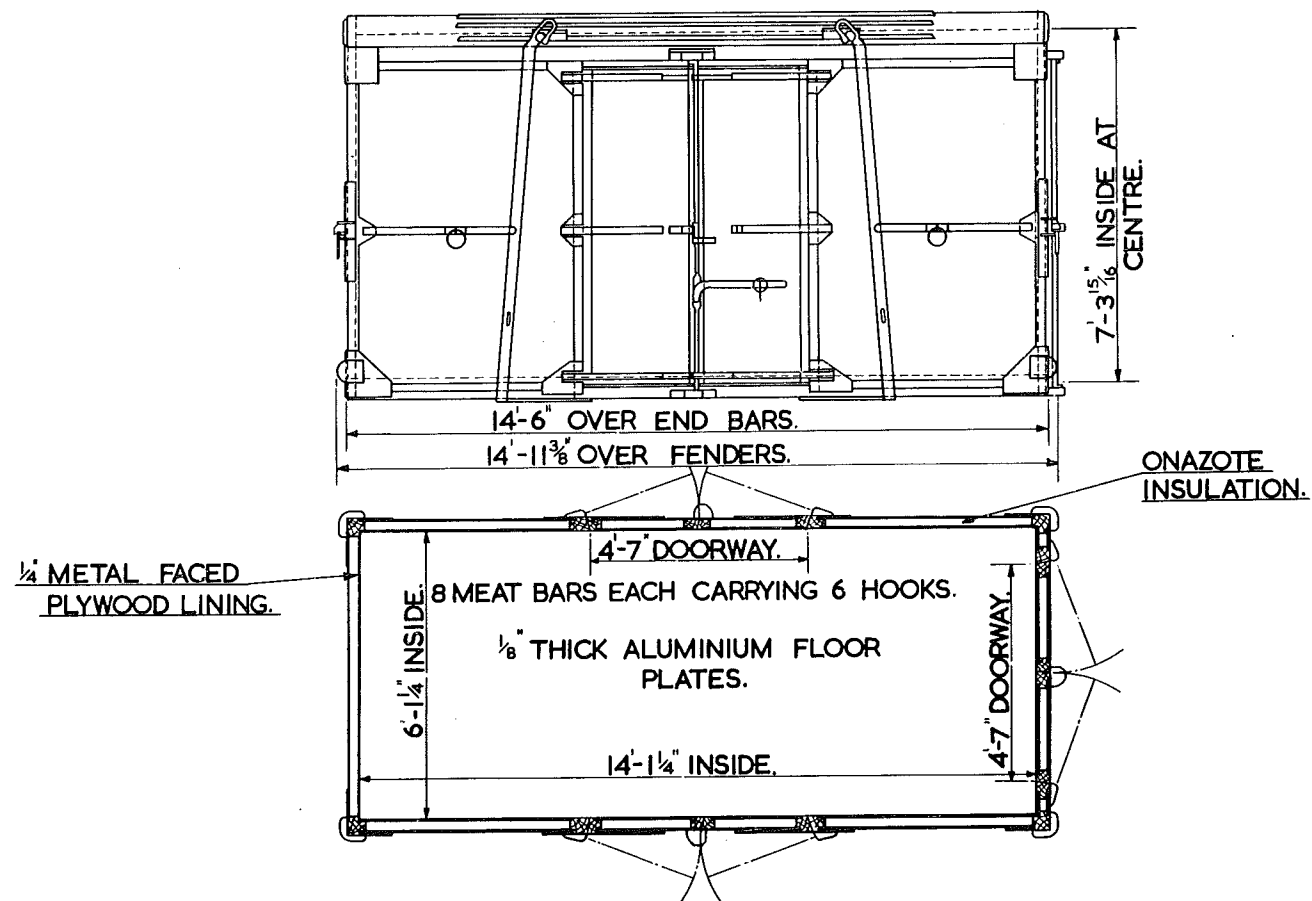
B.R. 3/204.



DRG. No. - RCH2 889D
CU. CAP - 632 CU. FT.
CARR. CAP - 4 TONS.
APPROX. TARE - 2T.-5C.-3Q

MEAT CONTAINER TYPE F.M.

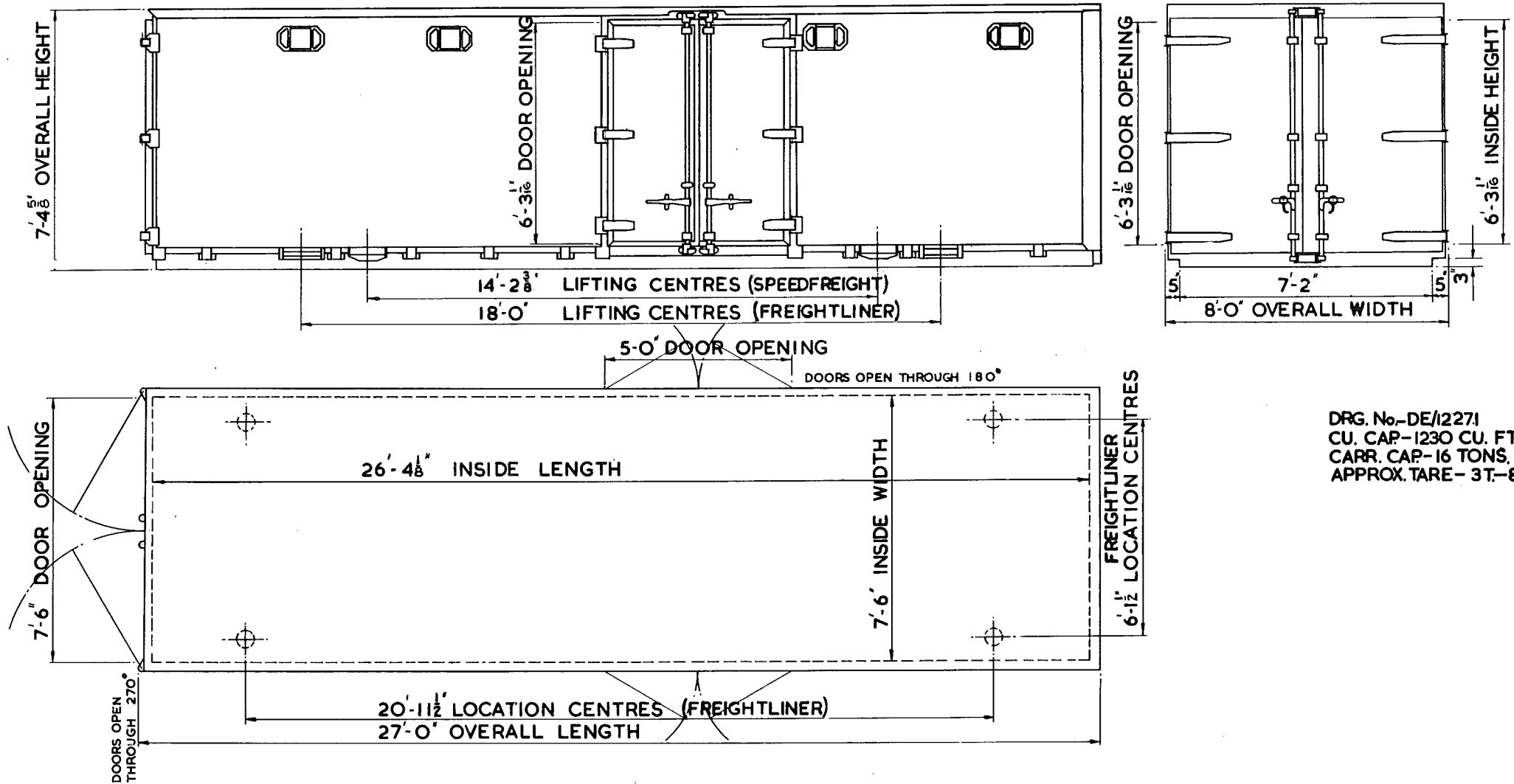
BR 3/205



DRG. No-RCH2990
CARR CAP-4T-15C.
CU. CAP-632 CU. FT.
APPROX. TARE- 2T. 3C. 3Q.

27 FT COVERED CONTAINER TYPE CA SPEEDFREIGHT

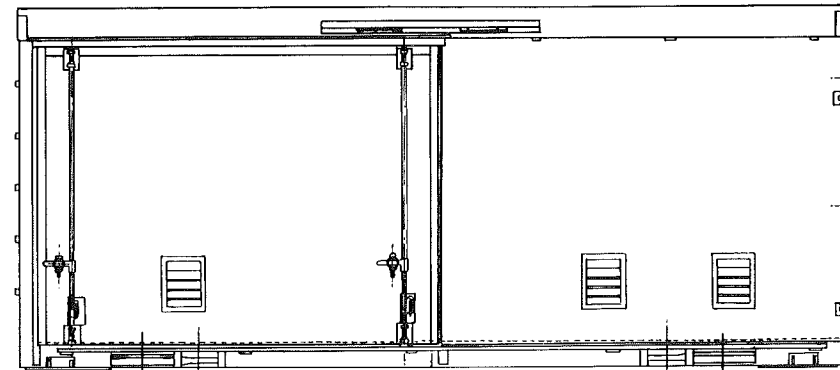
BR 3/210.



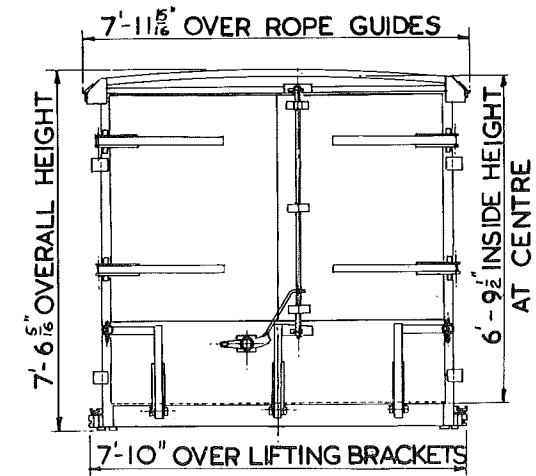
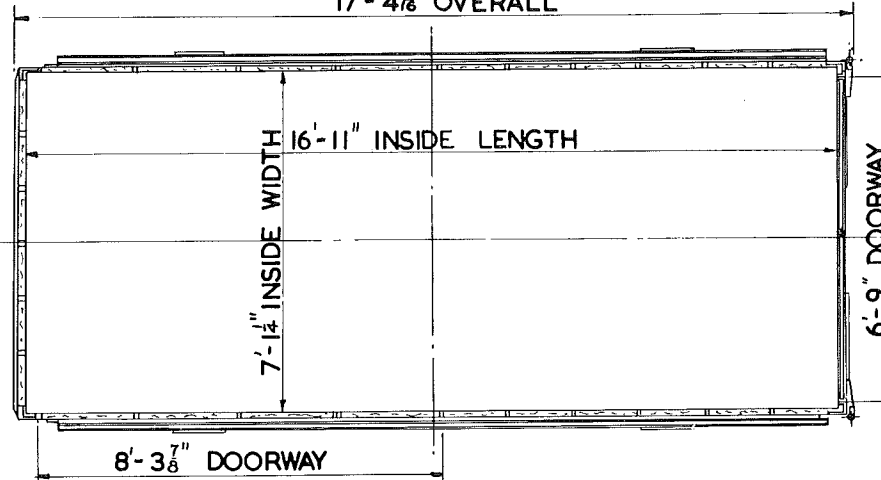
DRG. No.-DE/12271
CU. CAP-1230 CU. FT.
CARR. CAP-16 TONS.
APPROX. TARE- 3T.-8C.

FA TYPE CONTAINER (INSULATED)

BR. 3/230.



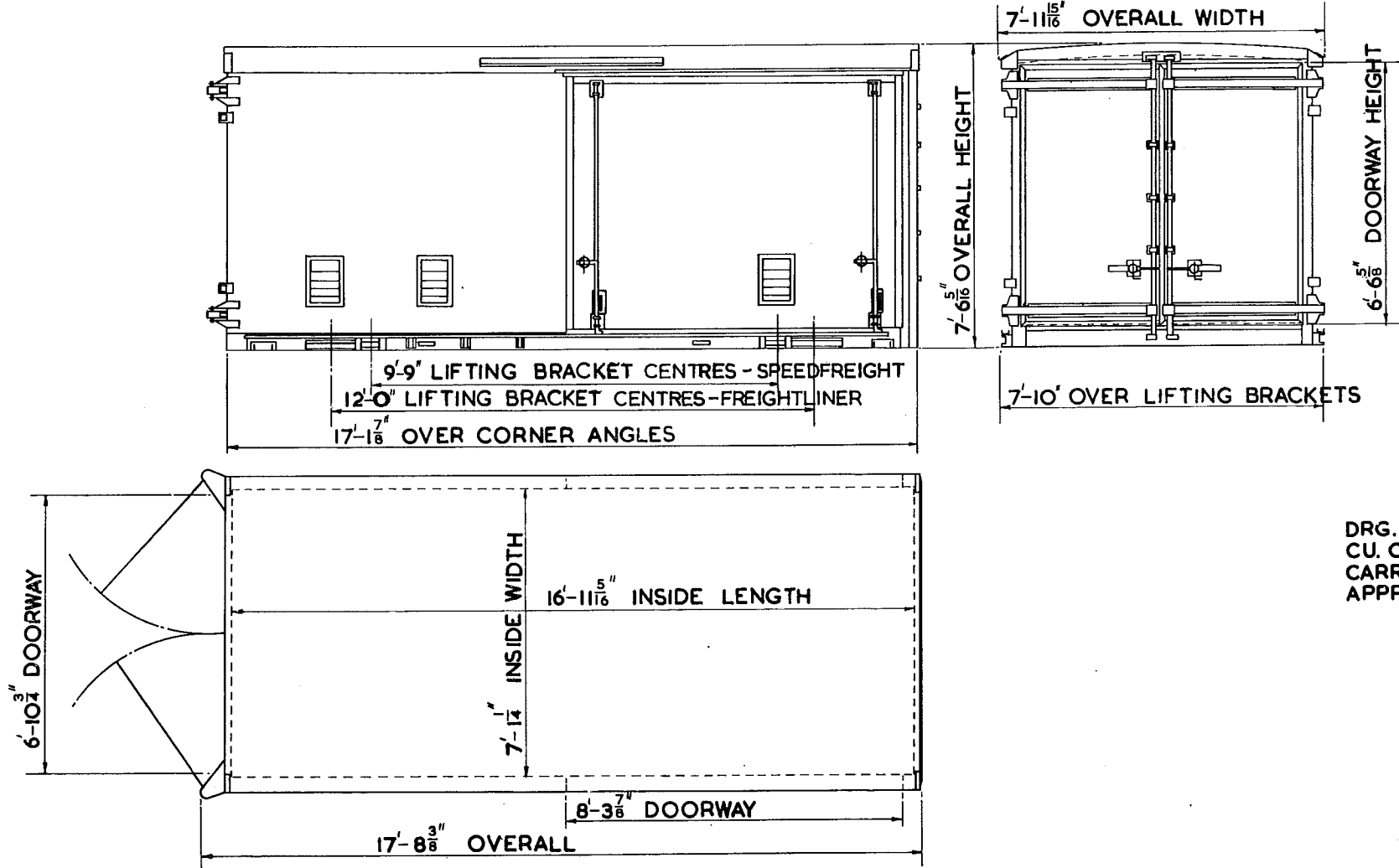
9'-9" LIFTING BRACKET CENTRES - SPEEDFREIGHT
 12'-0" LIFTING BRACKET CENTRES - FREIGHTLINER
 17'-4¹³/₈" OVERALL



DRG. No. - DE11680
 CU. CAP. - 807 CU. FT.
 CARR. CAP - 10 TONS.
 TARE - 1T. - 18 C. - 1Q.

CONTAINER TYPE FA

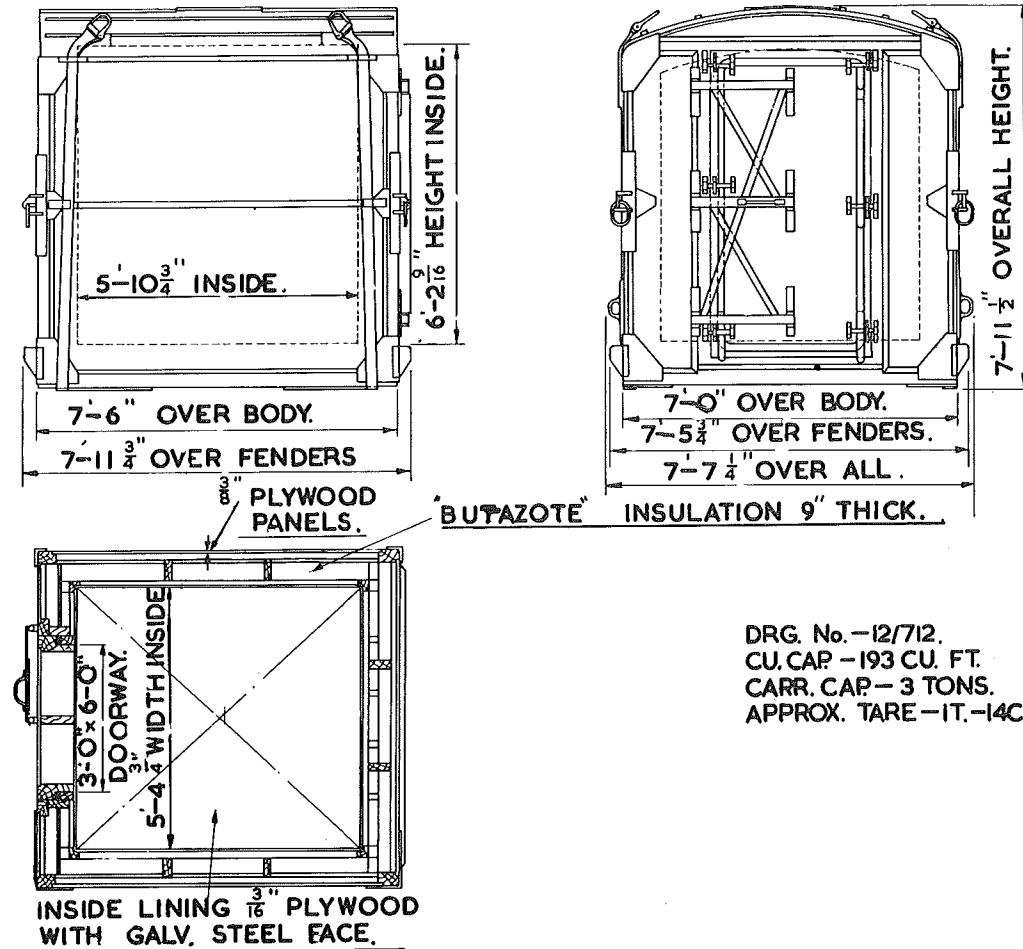
B.R. 3/231.



DRG. No. DE/11679.
CU. CAP - 807 CU. FT.
CARR. CAP - 10 TONS.
APPROX. TARE - 2T-1C-3Q.

CONTAINER. TYPE AF.

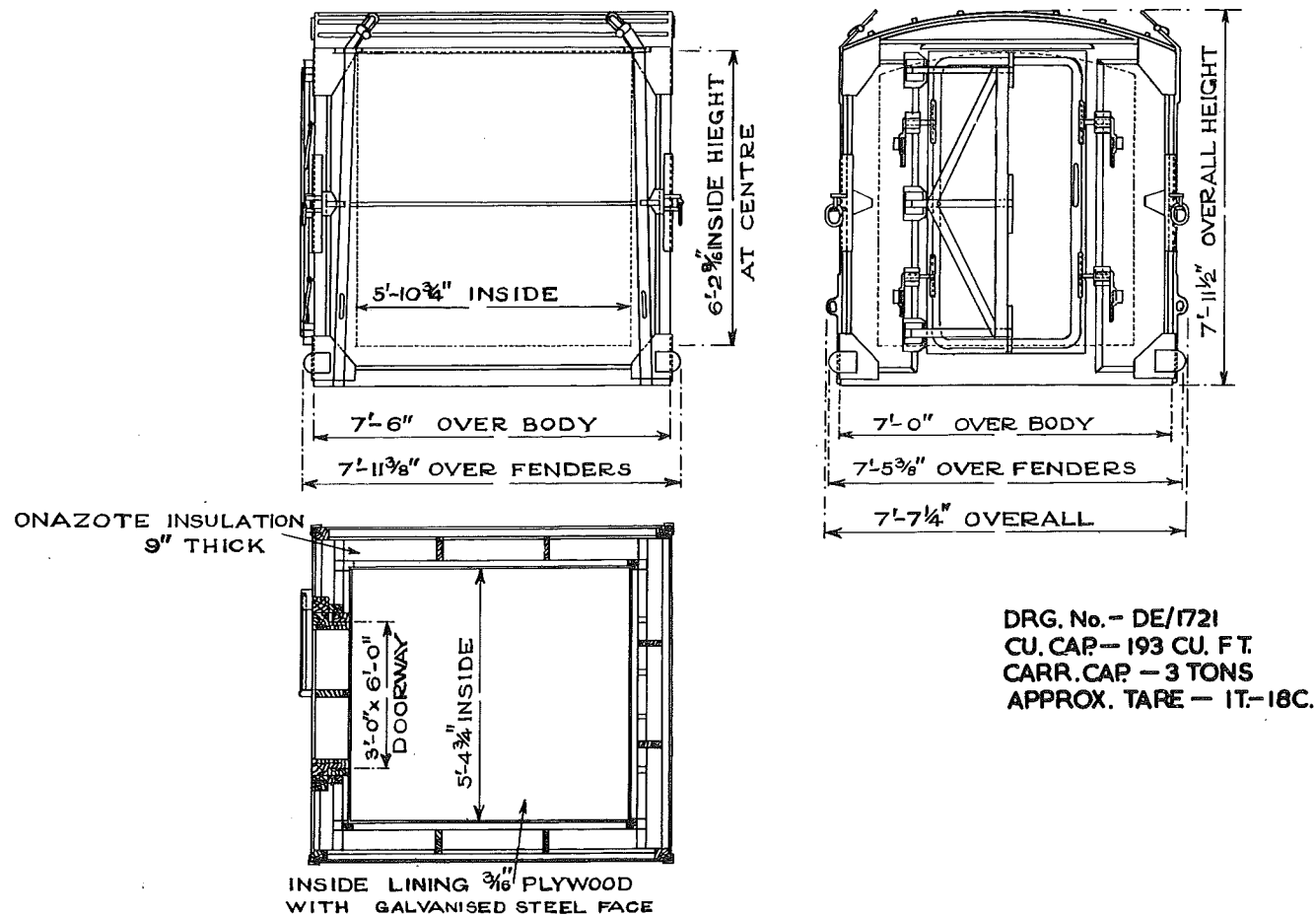
BR. 3/250.



DRG. No. -12/712.
CU. CAP - 193 CU. FT.
CARR. CAP - 3 TONS.
APPROX. TARE - 1T. - 14C. - 2Q.

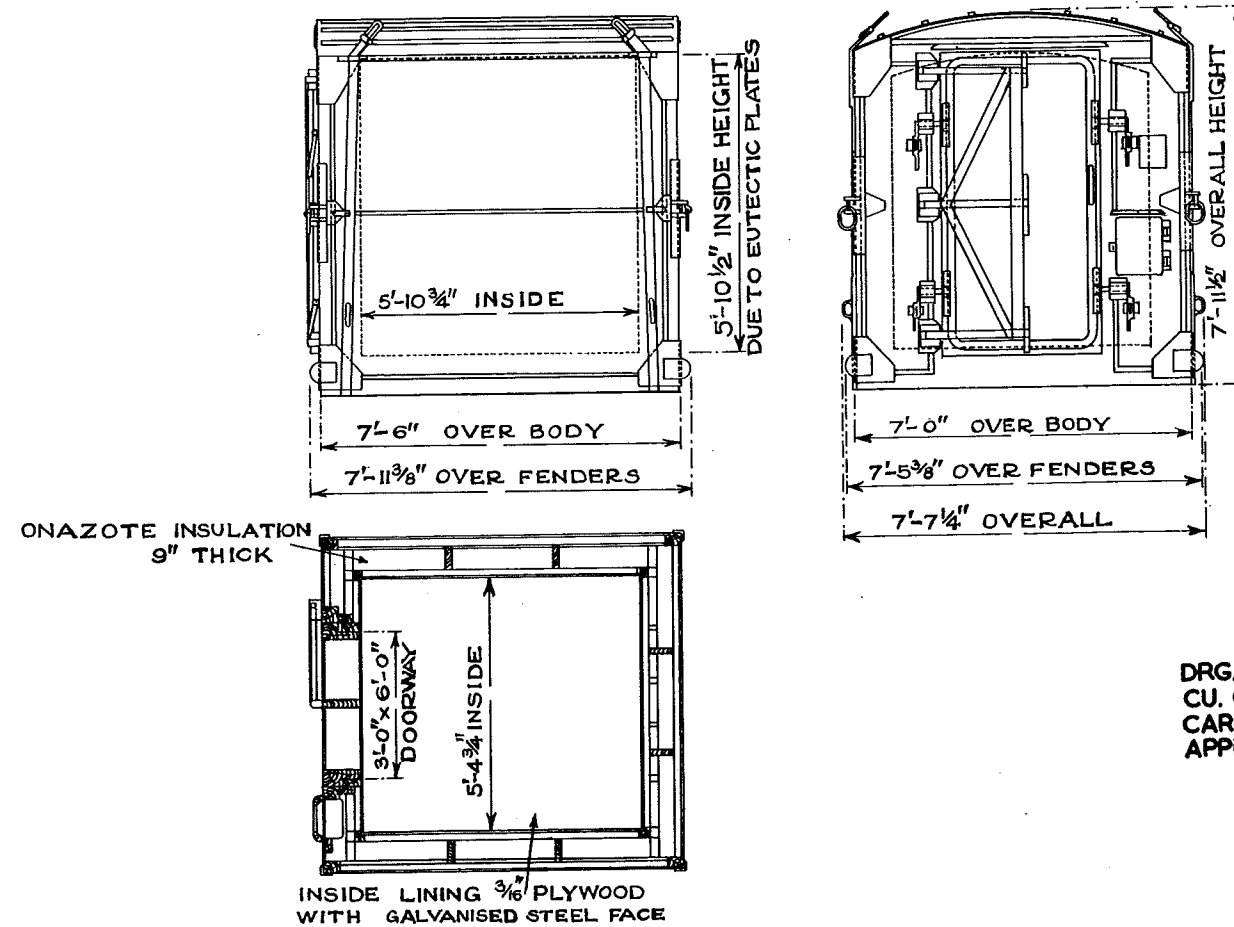
CONTAINER TYPE "AF"

B.R. 3/252.



CONTAINER TYPE "A F U."
FITTED WITH EUTECTIC PLATES.

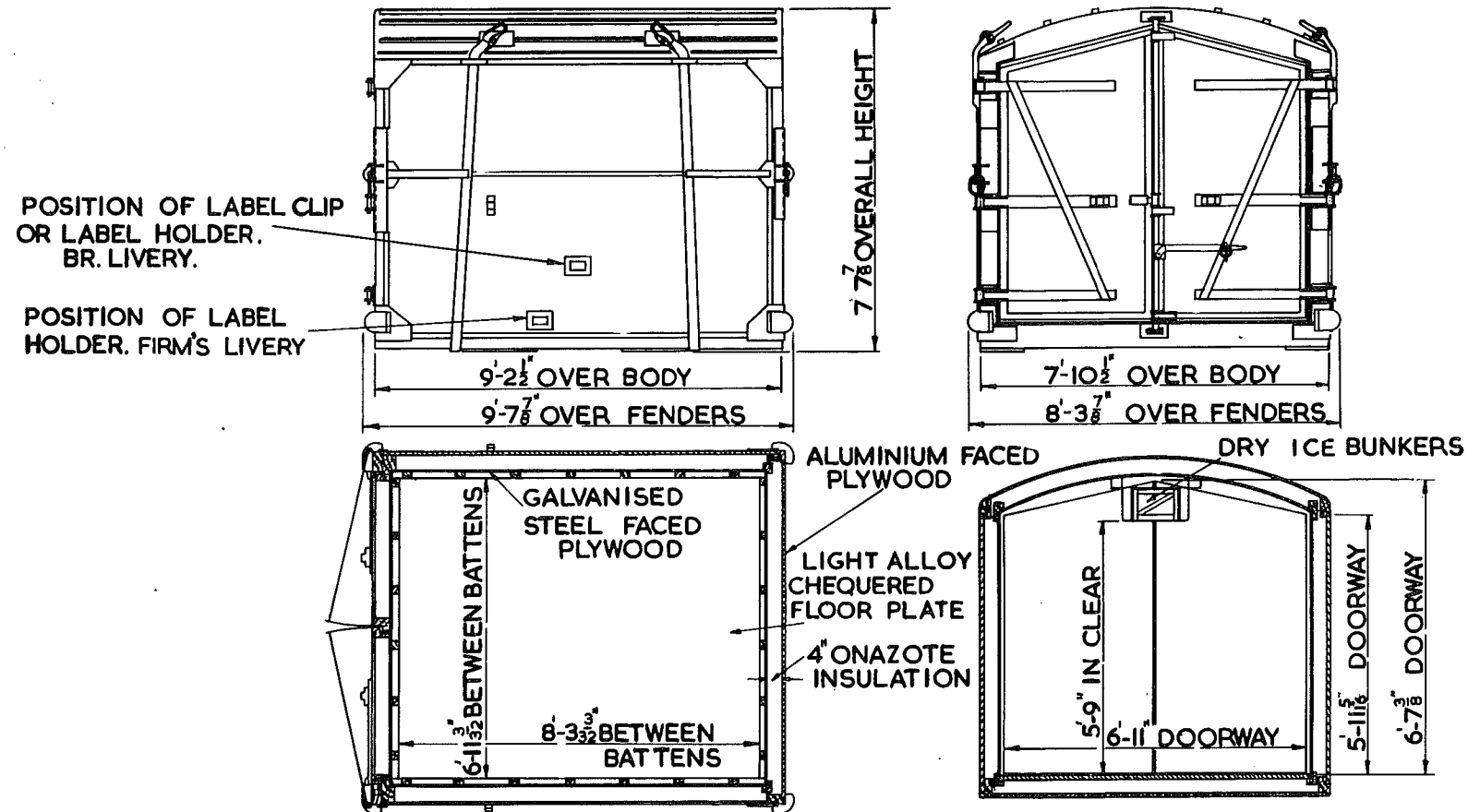
B.R. 3/253.



DRG. No. - DE/1744.
 CU. CAP - 183 CU. FT.
 CARR. CAP - 3 TONS.
 APPROX. TARE - 2 T.-2 C.

CONTAINER TYPE AFP.

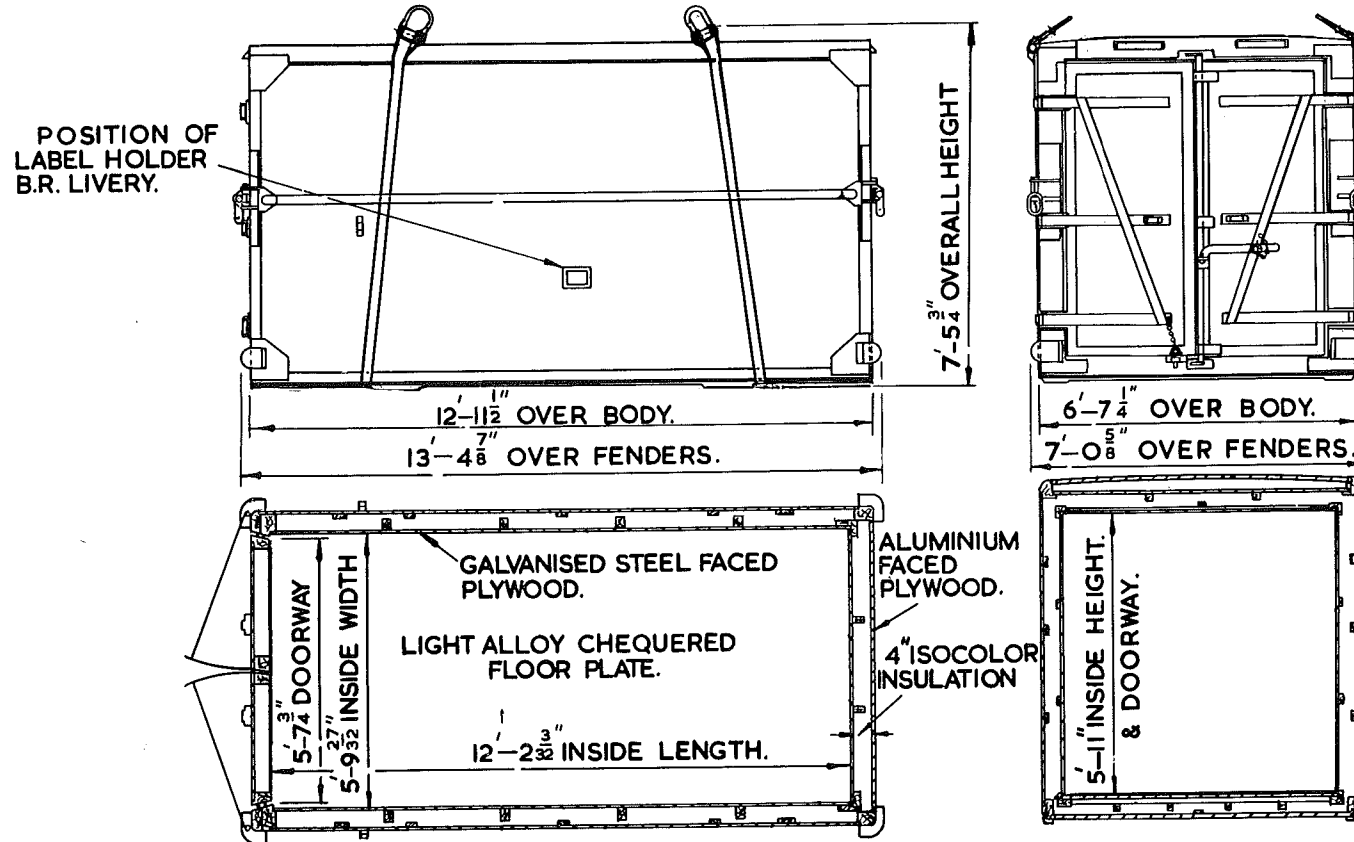
BR. 3/256.



DRG. NO - SW/SW/404
 CU. CAP. - 328 CU. FT.
 CARR. CAP. - 4 TONS.
 APPROX. TARE. - 2T.-OC.-OLBS.

CONTAINER TYPE AFC

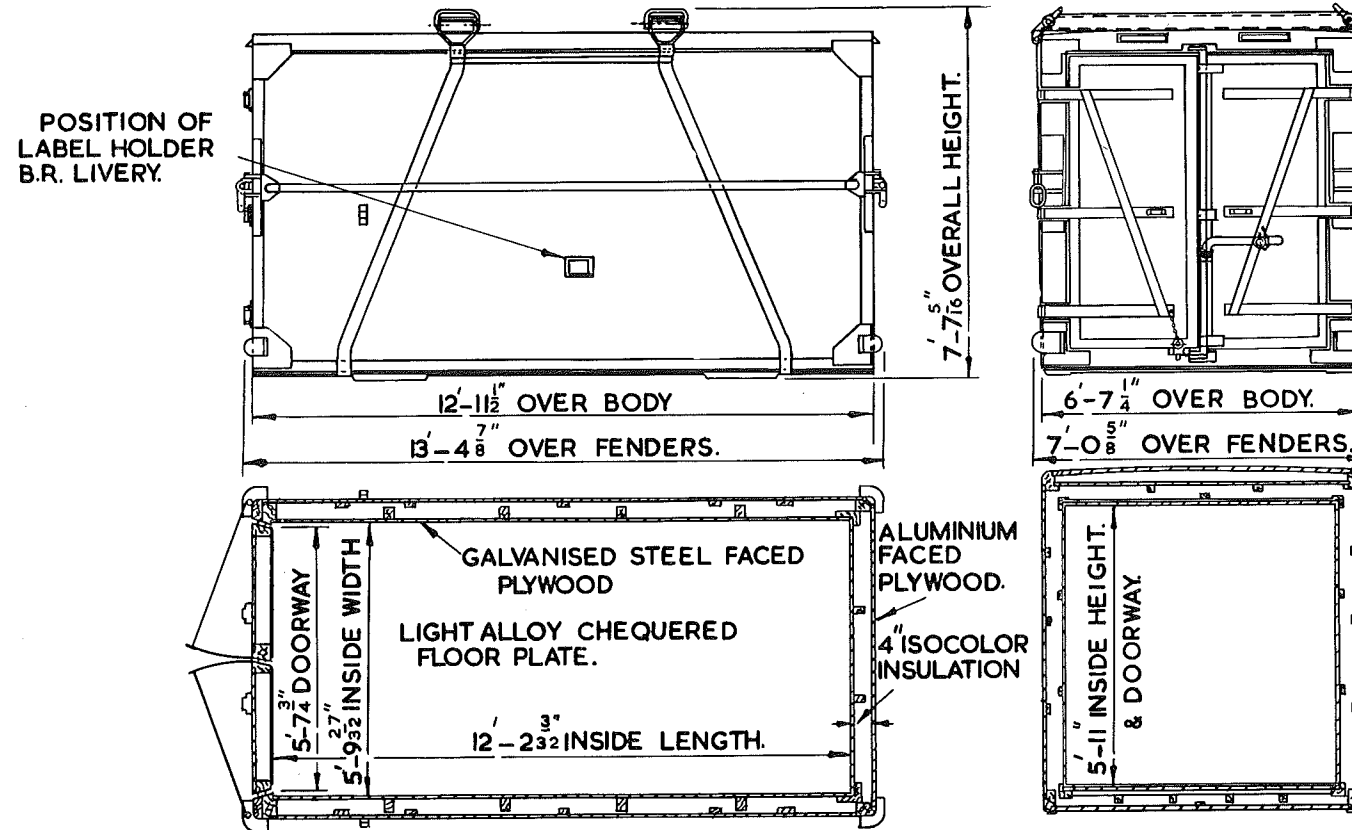
B.R.3/260.



DRG. No. — SW/SW/815
 CU. CAP — 422 CU. FT.
 CARR. CAP — 4T.—15C.
 APPROX. TARE — 2T.—0C.—1Q.

CONTAINER TYPE AFC.

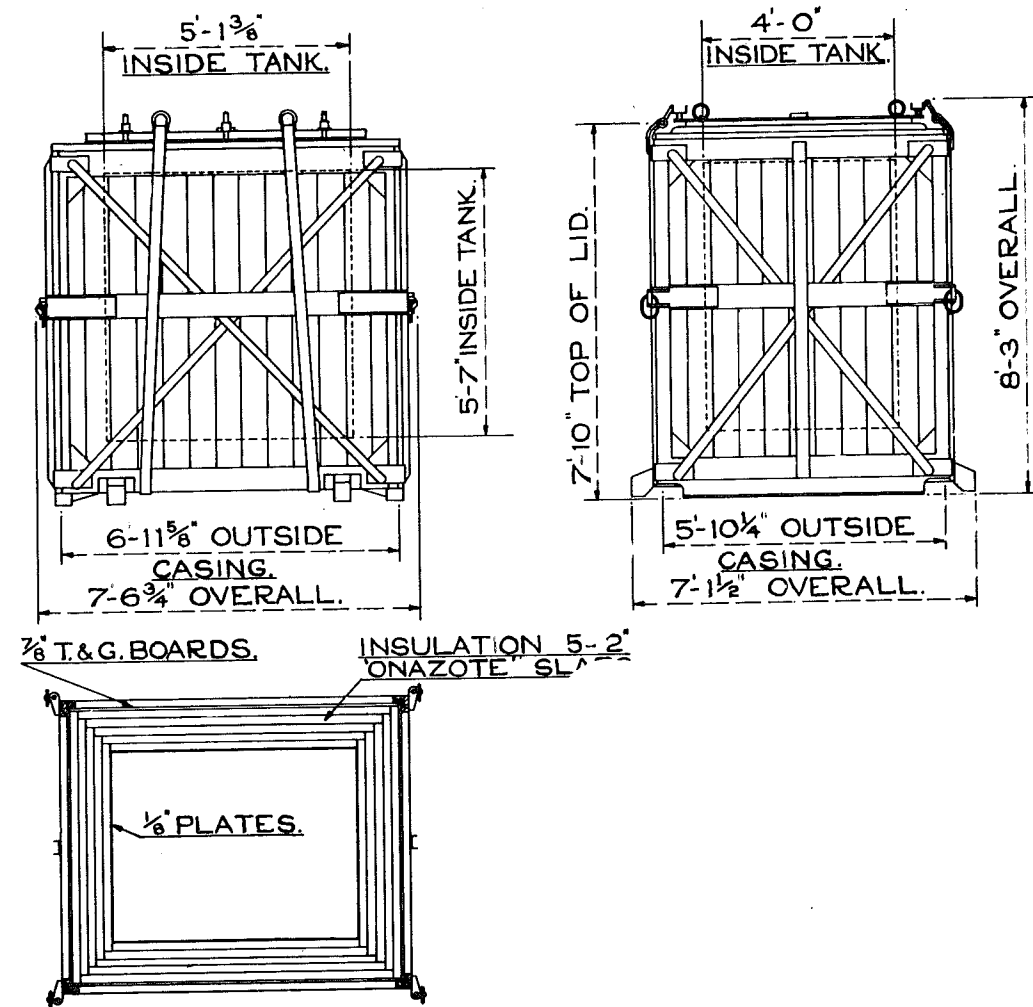
BR. 3/261.



DRG. No. - SW/SW/851
CARR. CAP - 4T-15C.
CU. CAP - 422 CU. FT.
APPROX. TARE - 2 TONS.

CONTAINER TYPE AX.

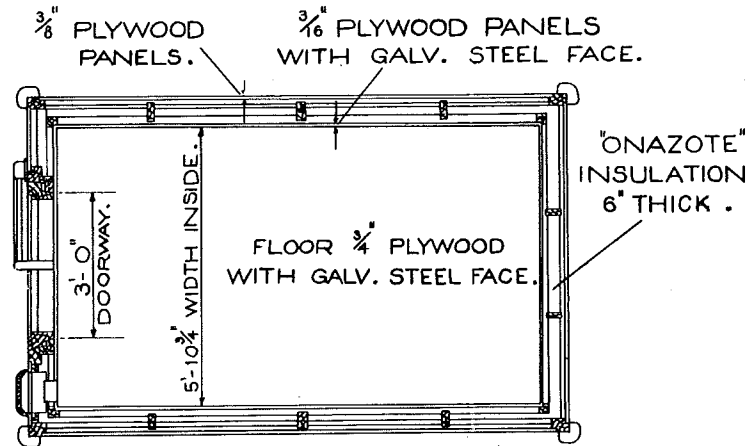
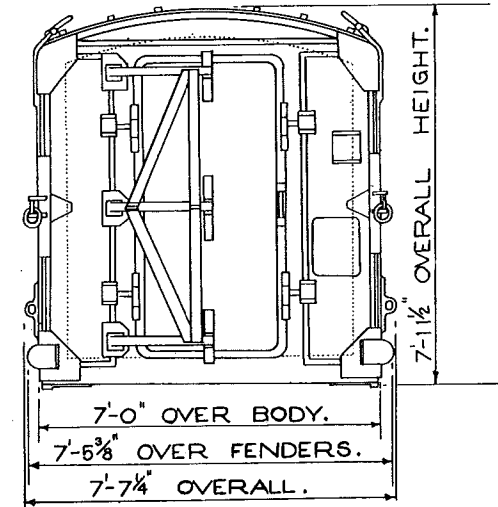
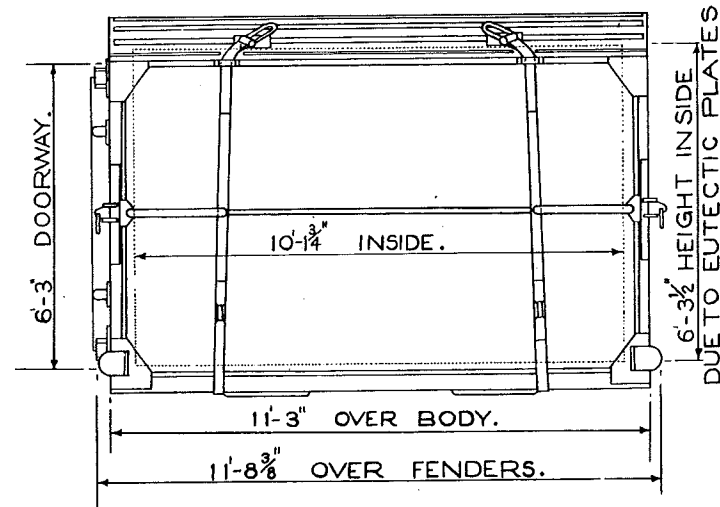
BR. 3/275.



DRG. No. - 17268N.
CU. CAP - 110 CU. FT.
CARR. CAP - 3 TONS.
APPROX. TARE - 17-19C-3Q.

CONTAINER TYPE "AFX".
FITTED WITH EUTECTIC PLATES.

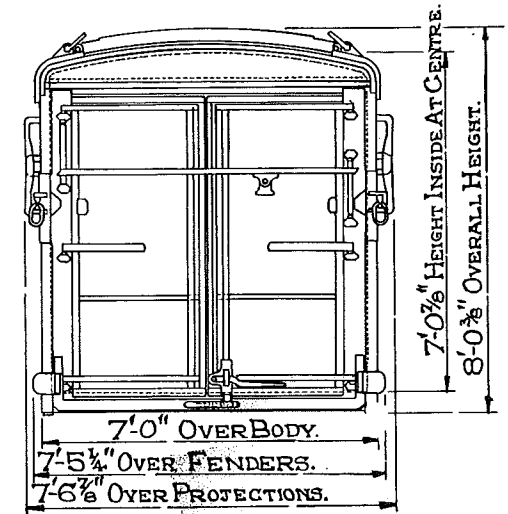
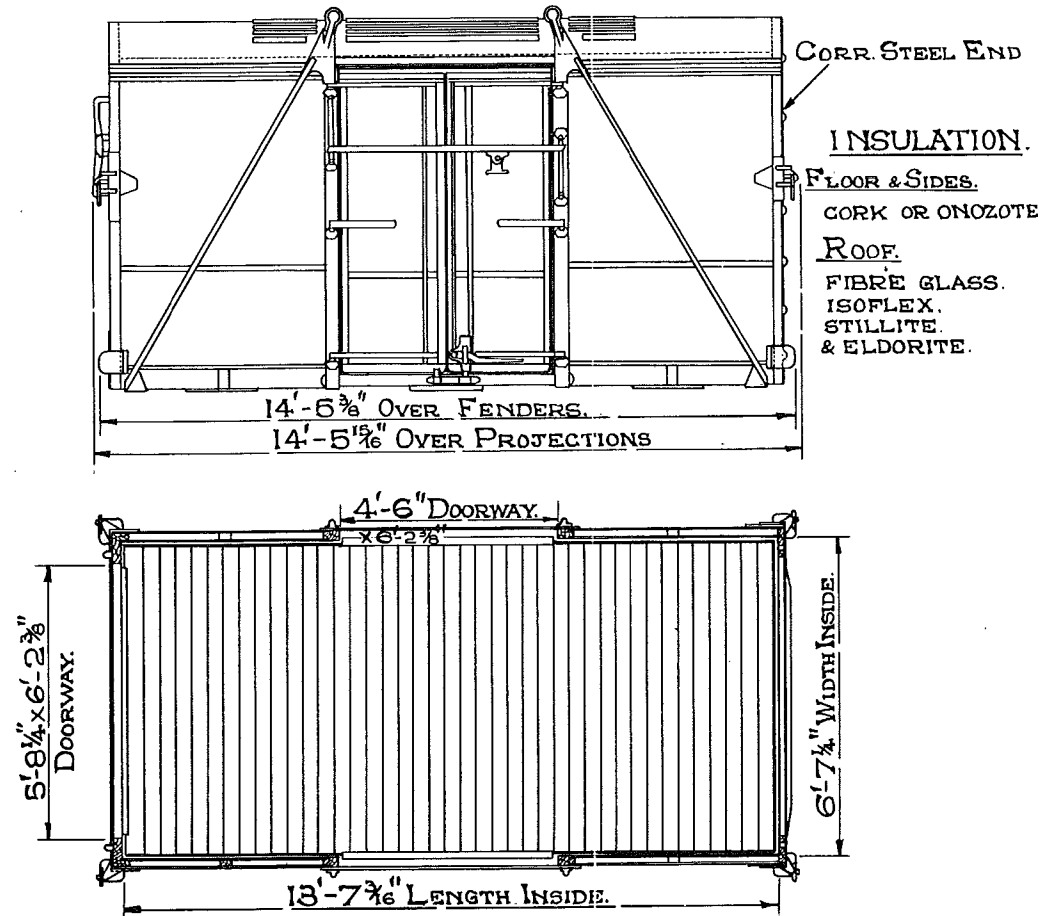
B.R 3/300



DRG. No.- DE/1650
 CU. CAP.- 360 CU. FT.
 CARR. CAP.- 3 1/2 TONS.
 APPROX. TARE - 2T.-10C.-2Q.

CONTAINER TYPE "F"

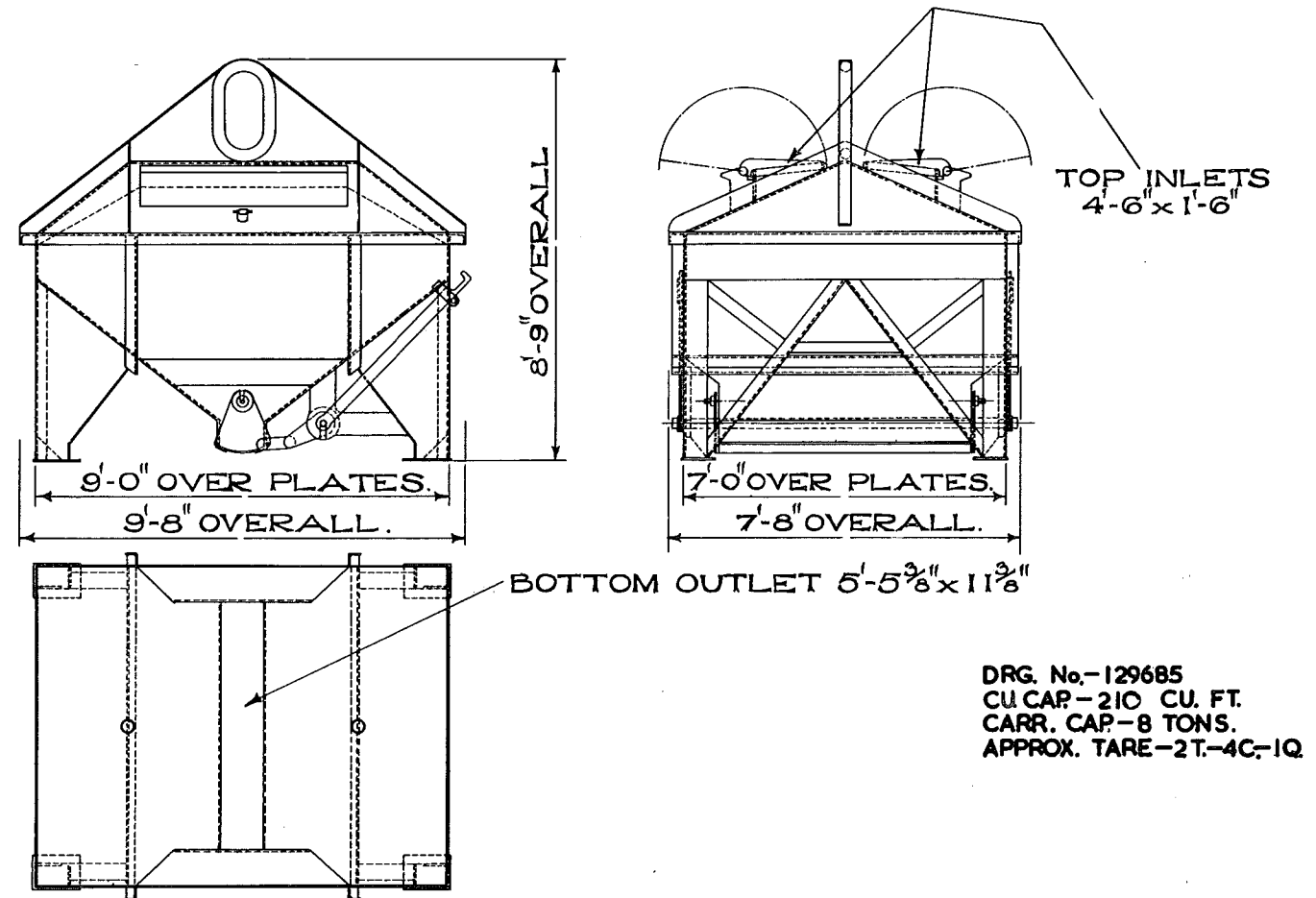
B.R. 3/375.



DRG. No. - E38663.
 CU. CAP - 644 CU. FT.
 CARR. CAP - 3T. - 10C.
 APPROX. TARE - 2T. - 3C.

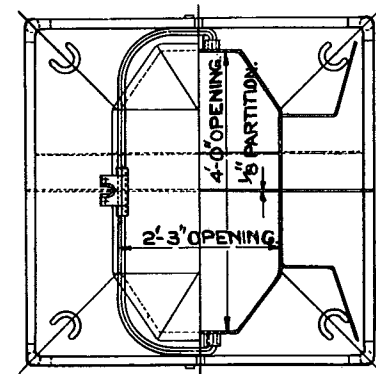
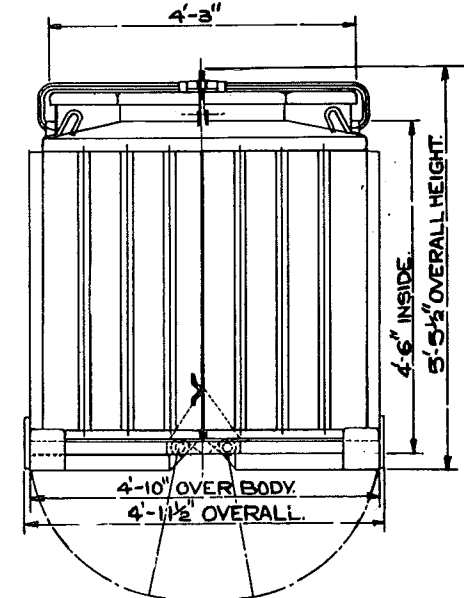
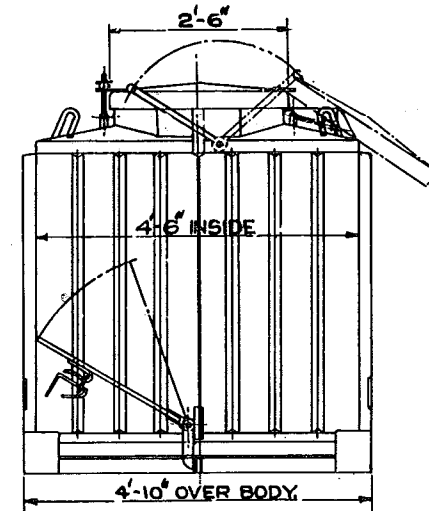
CONTAINER TYPE 'LD.'

B.R. 3/400.



CONTAINER TYPE "L"

B.R. 3/450.

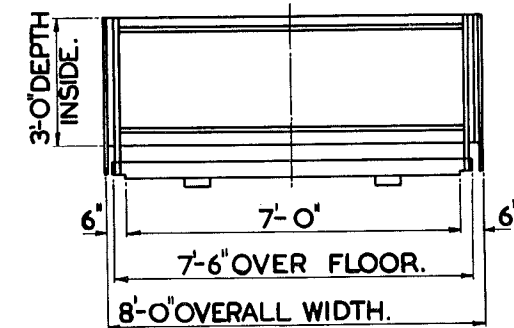
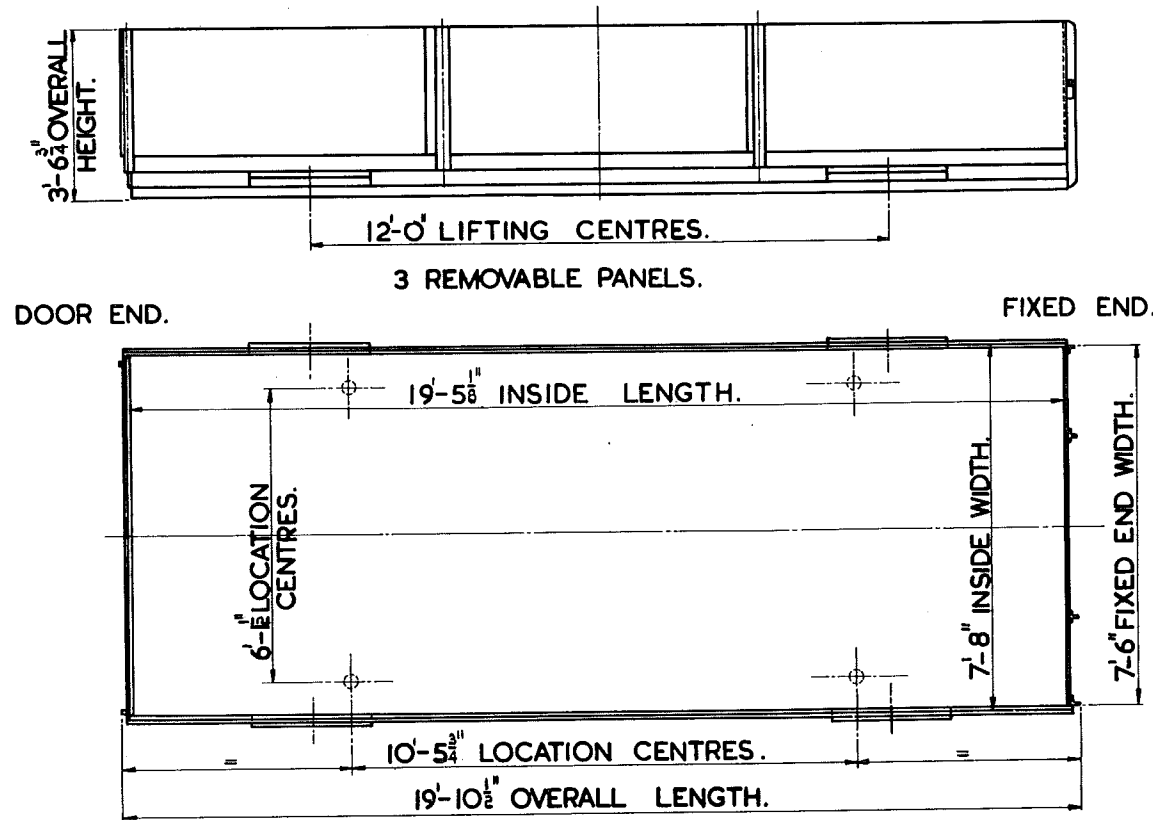


HALF TOP PLAN. LID REMOVED.

DRG. No. — SX28904
CU. CAP — 90 CU. FT.
APPROX. TARE — 11C. — 2Q.
CARR. CAP. — 4 TONS.

20 FT. OPEN CONTAINER TYPE H - FREIGHTLINER.

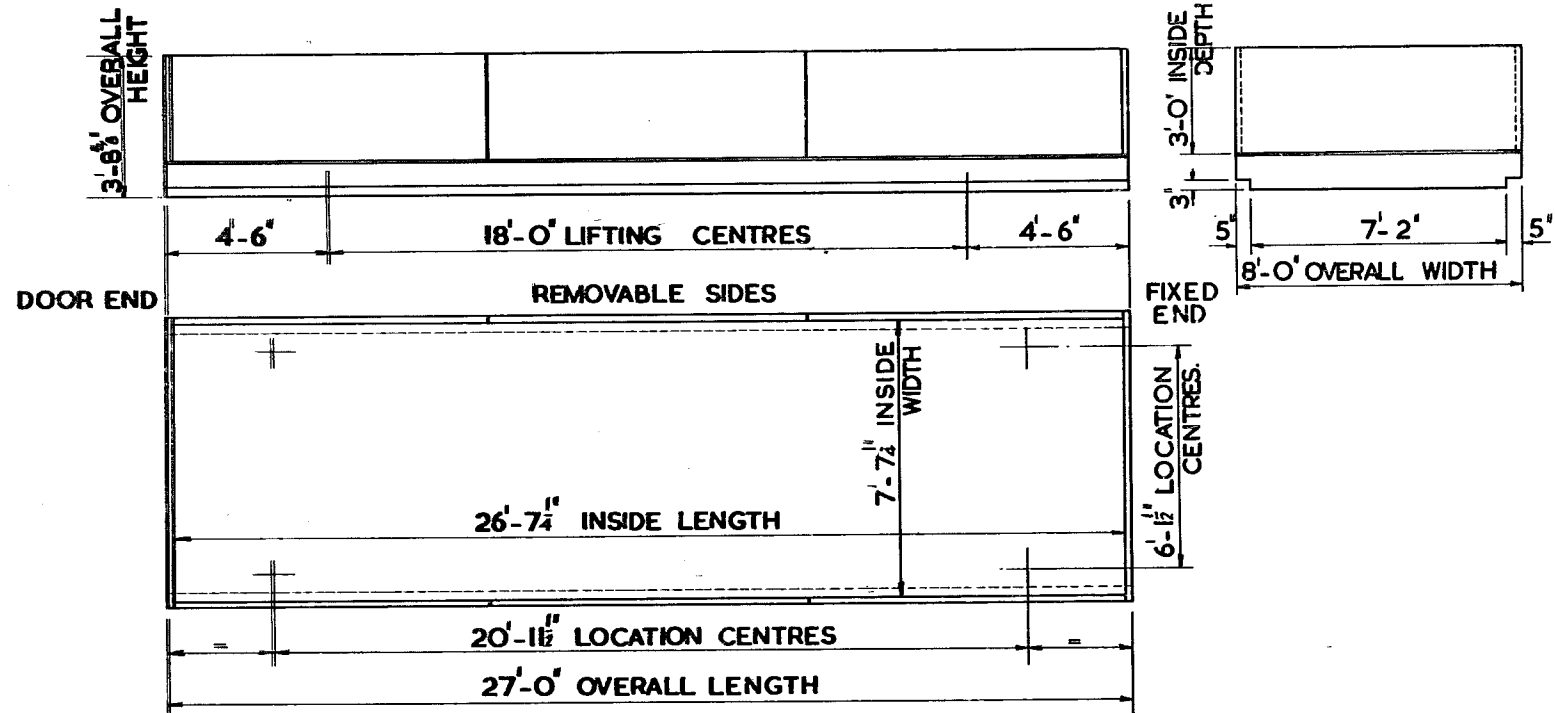
B.R. 3/607



DRG. NO. - DE/59078.
 CU. CAP. - 446 CU. FT.
 CARR. CAP. - 15 TONS.
 APPROX. TARE. - IT. - 8C. - OQ.

27FT. OPEN CONTAINER TYPE J - FREIGHTLINER

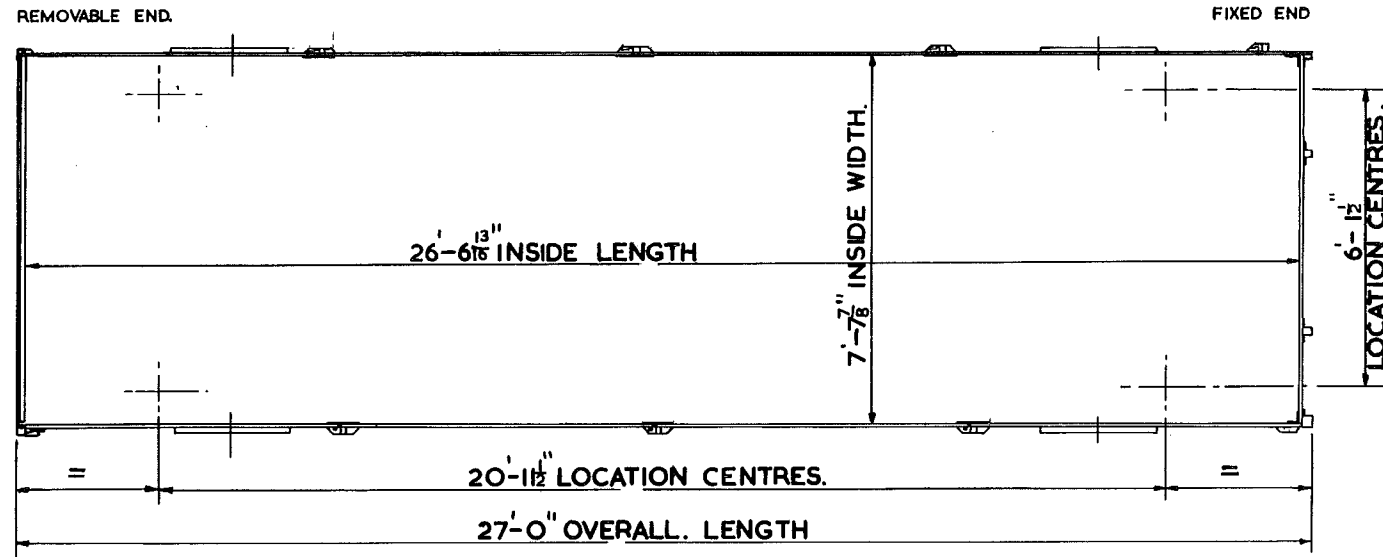
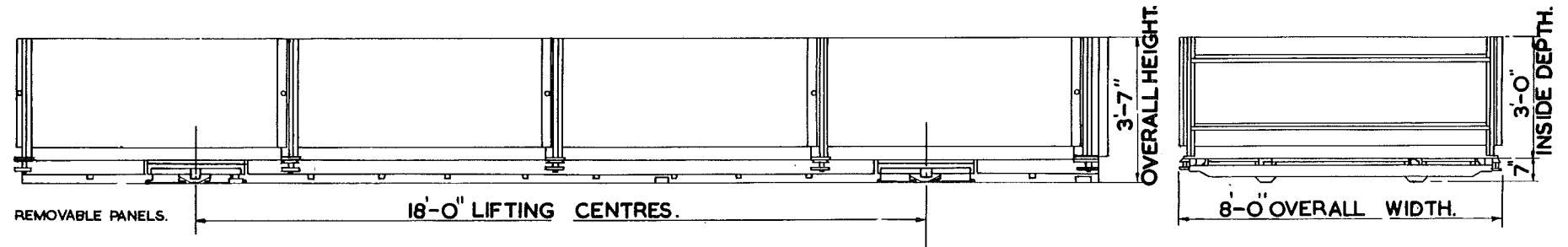
BR. 3/625.



DRG. No. - DE/12182.
CU. CAP. - 610 CU. FT.
CARR. CAP. - 20 TONS.
APPROX. TARE. - 2T. 10C.

27FT. OPEN CONTAINER TYPE J—FREIGHTLINER

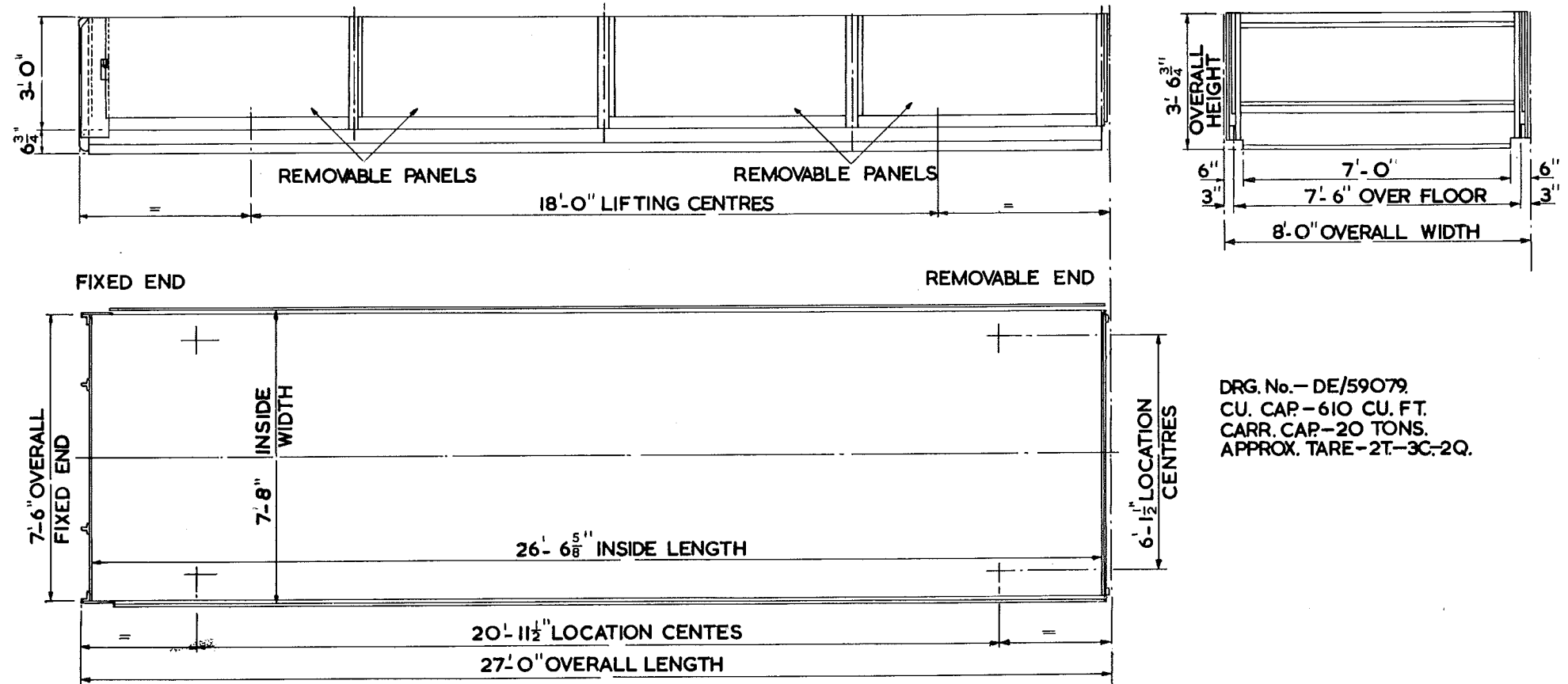
BR. 3/626.



DRG. No.—DE/58964
CU. CAP.—618 CU. FT.
CARR. CAP.—20 TONS.
APPROX. TARE—2T.-1C.-1Q.

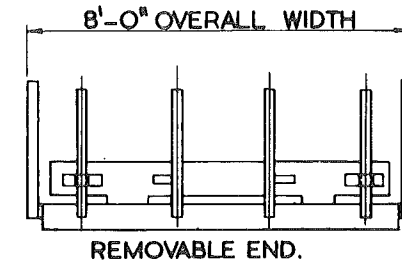
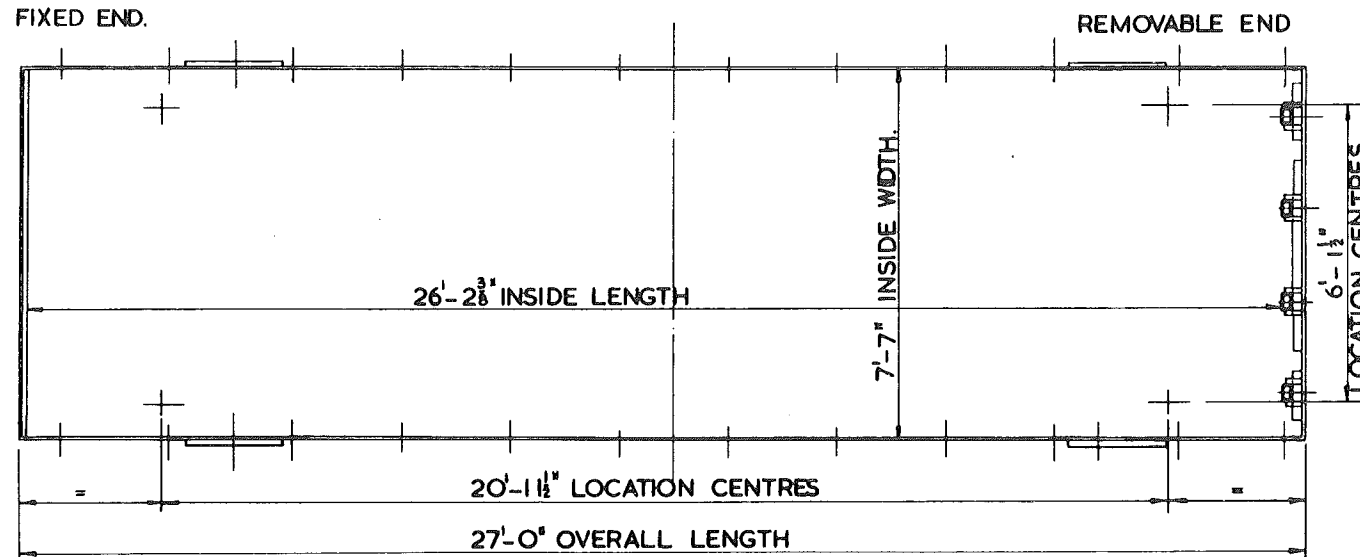
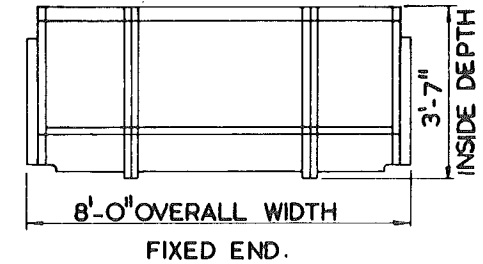
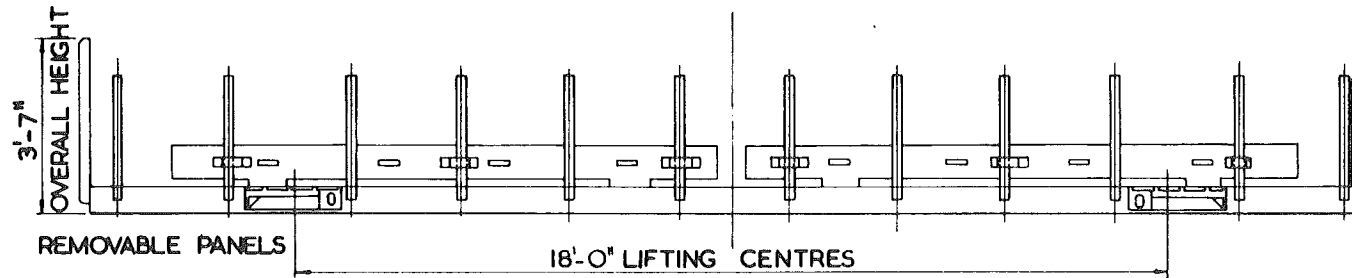
27 FT. OPEN CONTAINER TYPE J - FREIGHTLINER

BR 3/627



27 FT. OPEN CONTAINER - COIL CARRYING - J TYPE - WITH FREIGHTLINER LIFT.

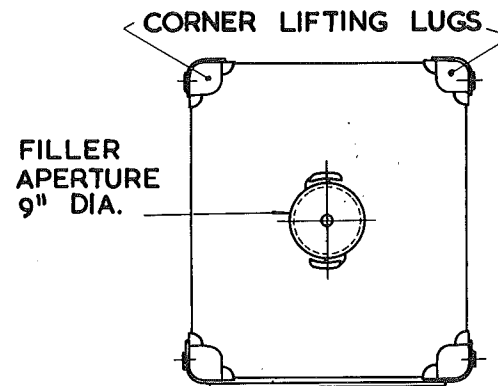
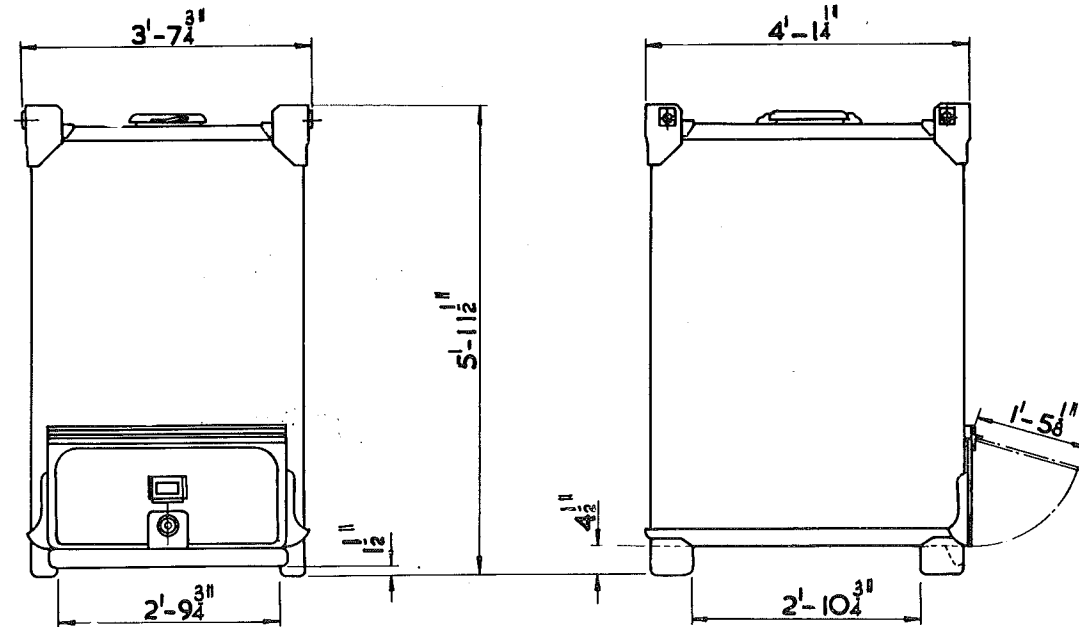
BR. 3/628



DRG. N° - DY/F-AO-109
CARR. CAP. - 20 TONS.
APPROX. TARE - 2T-9C-2Q.

TOTE BIN TYPE T

B.R. 3/70I.



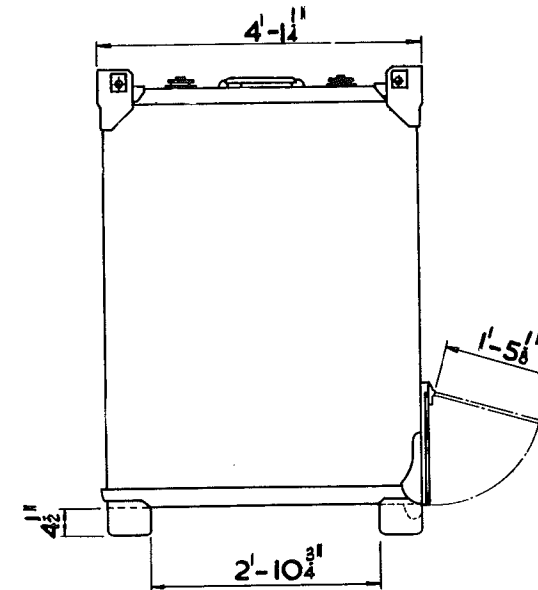
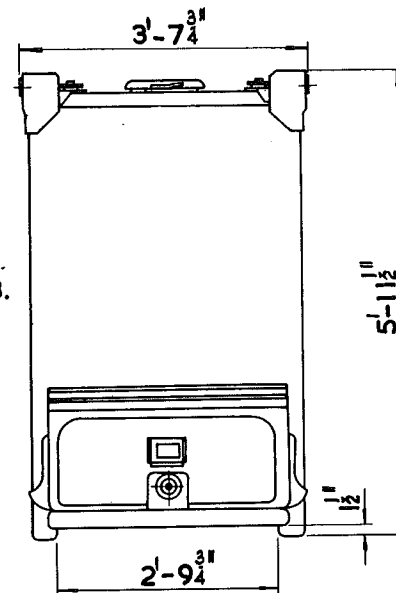
MANUFACTURERS IDENTIFICATION 'BA. 74 F'

DRG. NO. - PRESSOTURN DRG. TS. 1528.
 LIFTING LUGS PRESSOTURN DRG. TS. 1503
 CU. CAP. - 74 CU. FT.
 CARR. CAP. - $1\frac{1}{4}$ TONS.
 APPROX. TARE. - 2 C. - OQ. - 0 LBS.

TOTE BIN TYPE T.

B.R. 3/703

DRG. NO.- PRESSOTURN DRG. TS.1528.
LIFTING LUGS .. DRG. TS.1503.
CU. CAP. - 74 CU. FT.
CARR. CAP. - 1 1/4 TONS.
APPROX. TARE. - 2C. - OQ. - OLBS.

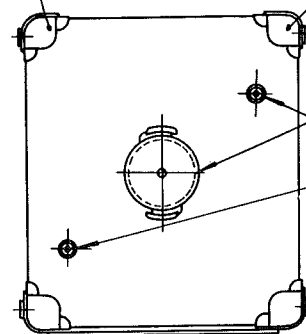


CORNER LIFTING LUGS.

MANUFACTURERS IDENTIFICATION BA 74 VF.

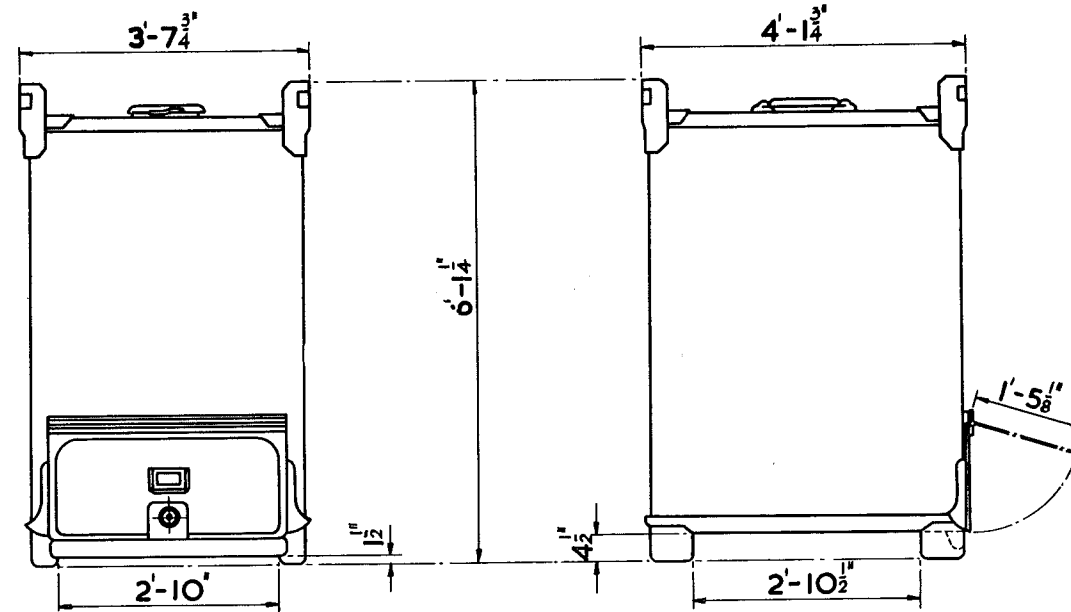
FILLER APERTURE 9' DIA.

VACUUM CONNECTIONS.



TOTE BIN TYPE T

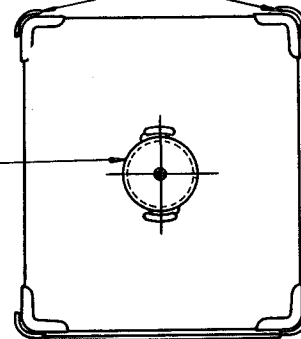
BR.3/704.



CORNER LIFTING LUGS

MANUFACTURERS IDENTIFICATION 'BA. 74 E.'

FILLER
APERTURE
9" DIA.



DRG. No. PRESSOTURN DRG. T.S. 1528.
LIFTING LUGS PRESSOTURN DRG. T.B. 108.
CUB. CAP. 74 CUB. FT.
CARR. CAP. 1, $1\frac{1}{2}$, OR 2 TONS.
APPROX. TARE 2C. OQ. 25 LBS.