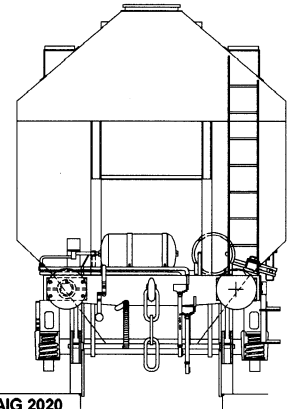
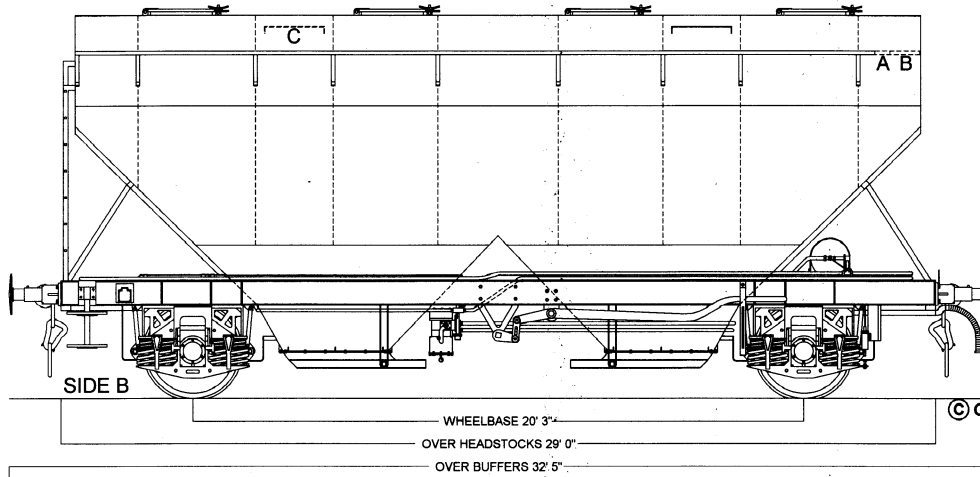
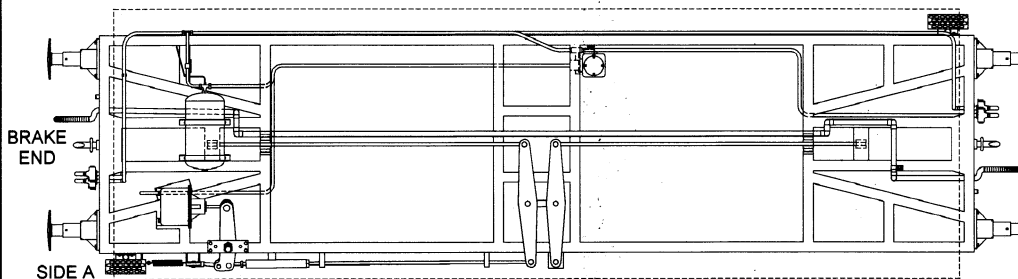
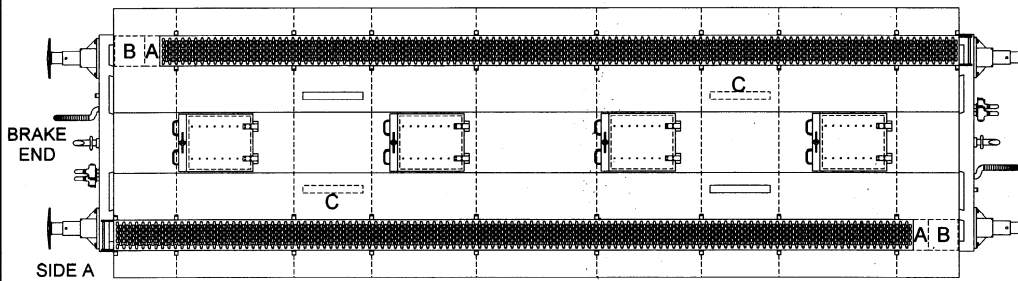
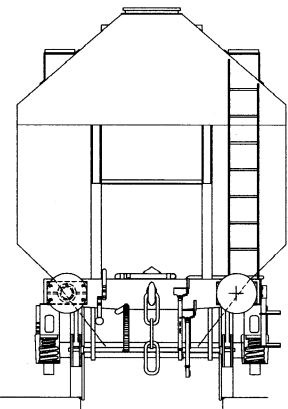
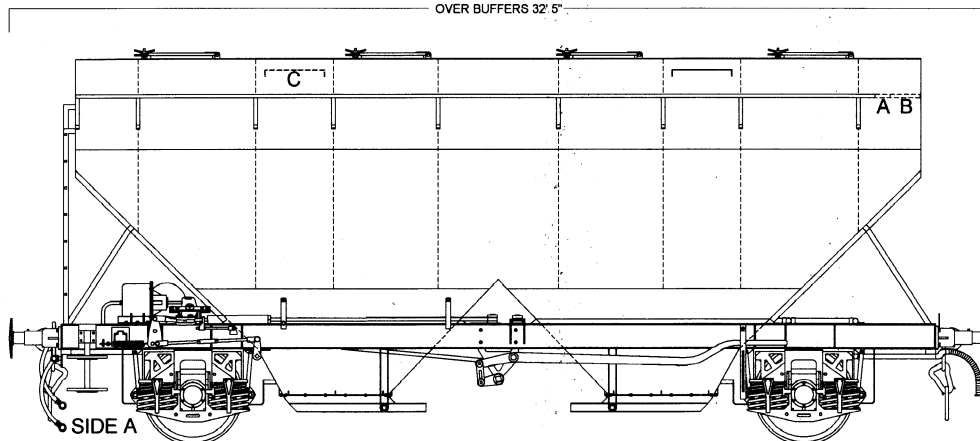


**PAB PETROLEUM COKE COVERED HOPPER WAGON PA007A**

BRT12102, 103, 106, 111, 112, 115



© COLIN CRAIG 2020



**Individual Variations.**

12102  
Both walkways extended fully as B.

12112  
Both walkways partially extended as A  
Hopper vents in mirrored position as C.