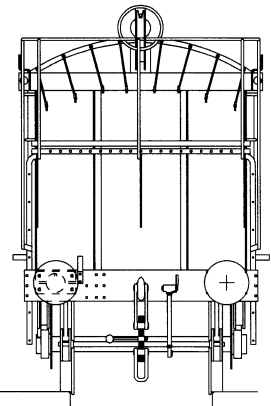
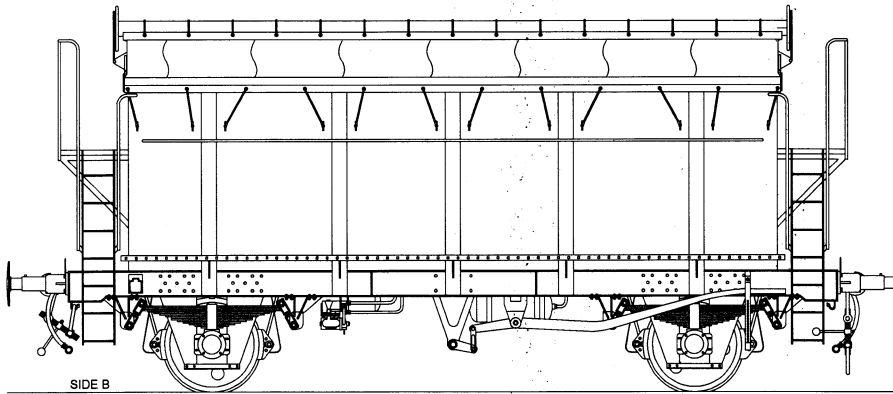
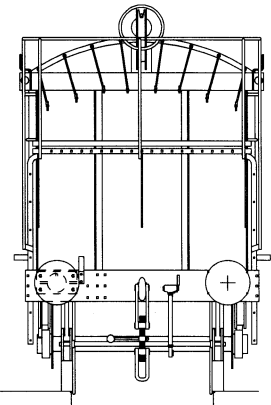
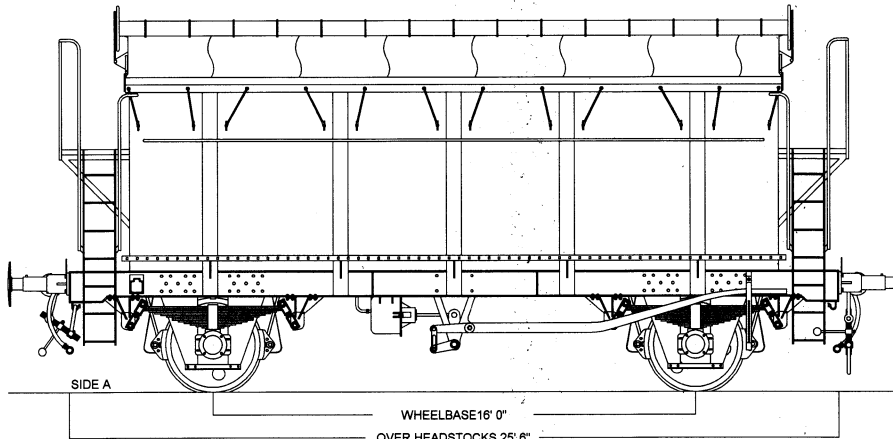


**PRA CHINA CLAY WAGON Design codes PR001A, PR001B**

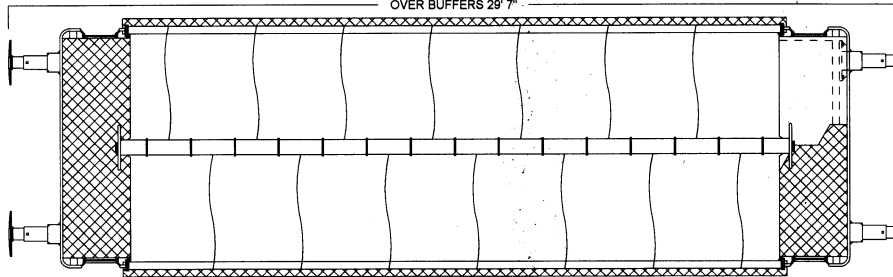
RLS6303 - 6316



© COLIN CRAIG 2000



WHEELBASE 16' 0"  
OVER HEADSTOCKS 25' 6"  
OVER BUFFERS 29' 7"



DRAWING CREATED ON CAD BY COLIN CRAIG FROM PRINCIPAL DIMENSIONS IN THE OFFICIAL BR DIAGRAM AND FROM PHOTOGRAPHS BY DAVID LARKIN



Scale 4mm to 1 foot

**NOTES:**

Built in 1983 by Standard Wagon Ltd., Heywood, and Reddish for Release Ltd., using the chassis from redundant APCM pallet vans originally built in 1964 to Dia. 6/492.

They were designed to carry China Clay, hired to Wiggins Teape Ltd, and used between Cornwall and Corpach, near Fort William.

The underframes were fitted with airbrakes during the conversion, which allowed use on Speedlink services.

They had a relatively short working life, with the last few remaining vehicles being stored out of use by 1992; this is probably due to a change to hopper discharge wagons, and/or slurry tankers, offering more efficient handling for this type of material.