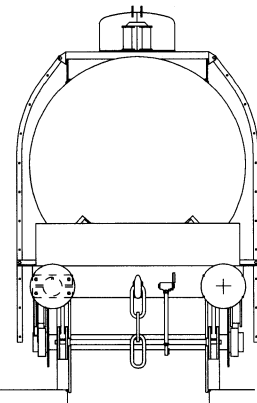
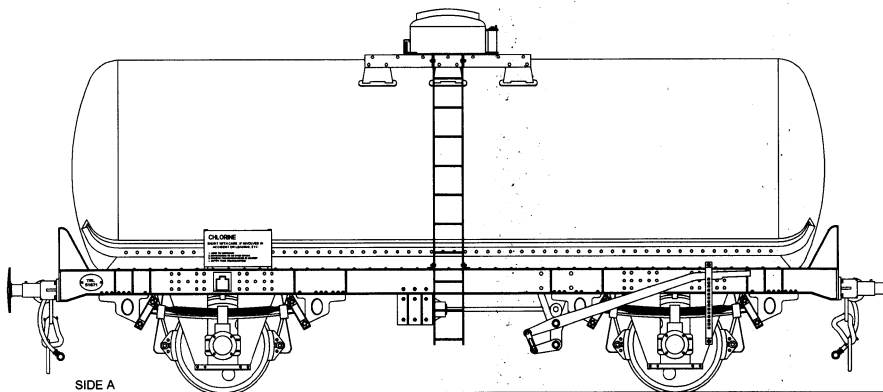
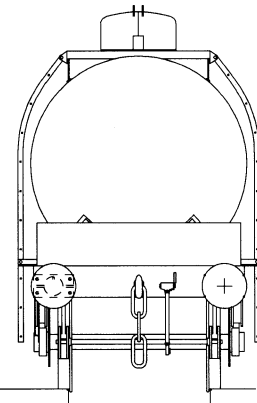
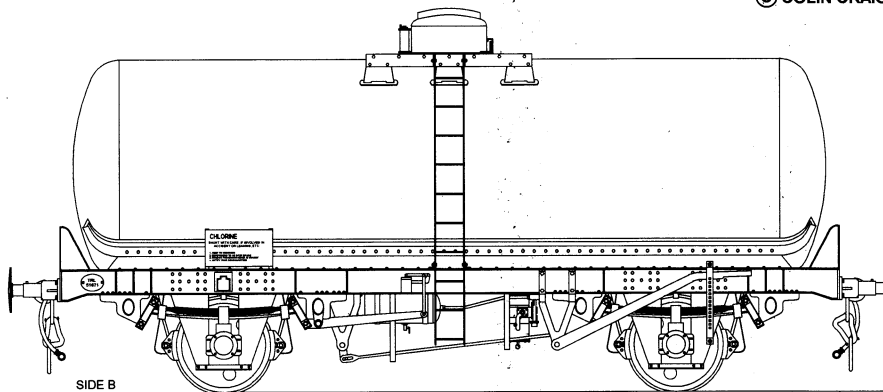


TTA 46T LIQUID CHLORINE TANK

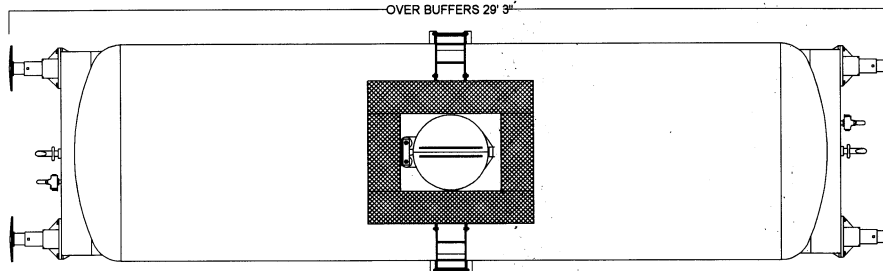
Design Code TT051J TRL51649-51723



© COLIN CRAIG 2000



WHEELBASE 15' 0"
OVER HEADSTOCKS 25' 10"
OVER BUFFERS 29' 9"



DRAWING CREATED ON CAD BY
COLIN CRAIG FROM PRINCIPAL
PUBLISHED DIMENSIONS AND
FROM PHOTOGRAPHS BY DAVID
LARKIN AND GREG BROOKES

1 0 1 2 3 4 5 10 15 20 25 30 FEET 35

NOTES:

Scale 4mm to 1 foot

Built in 1967/8 by Charles Roberts Ltd., Horbury Junction, Wakefield for Tank Rentals Ltd.,
They were designed to carry Liquid Chlorine, hired to Associated Octel Ltd., and ICI Mond Ltd.
Originally fitted with Vacuum through pipe and leaf springs, in which condition they had the TOPs code TTB.
Refurbishment, as shown in these drawings, saw removal of the vacuum through pipe, the fitting of Parabolic
type springs, and buffer over-ride plates

These wagons are very similar to earlier builds - 1965 design Code TT051Q TRL51410-51430 (Originally
vacuum braked), and 1966 Design Codes TT051B/TT051M TRL51562-51577; refurbishments were similar
to those on Design Code TT051J