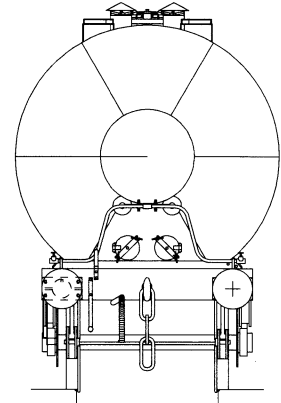
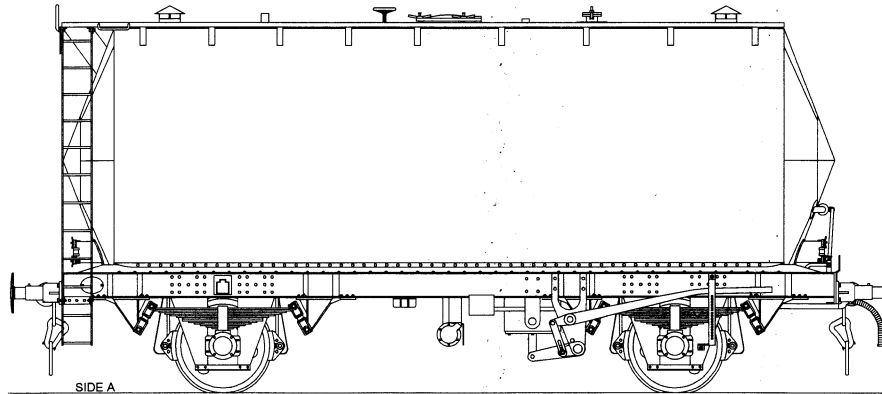
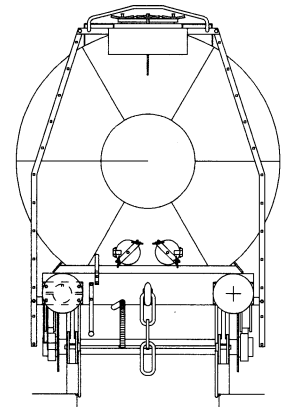
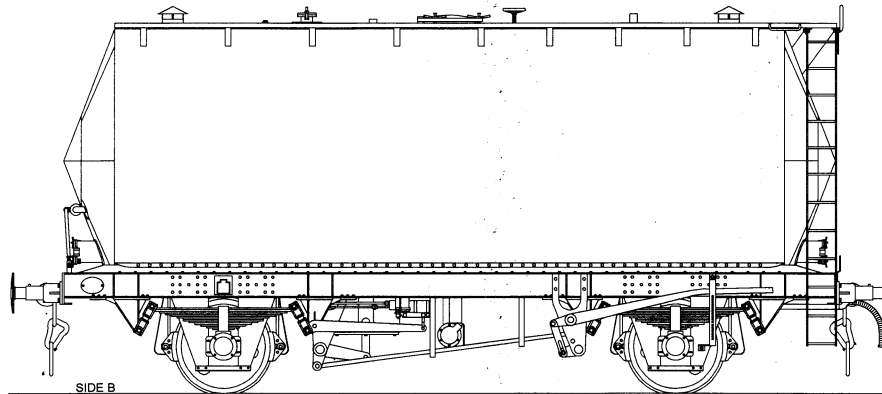


**45T Class Bitumen Tank Wagon Design Code TT066A**

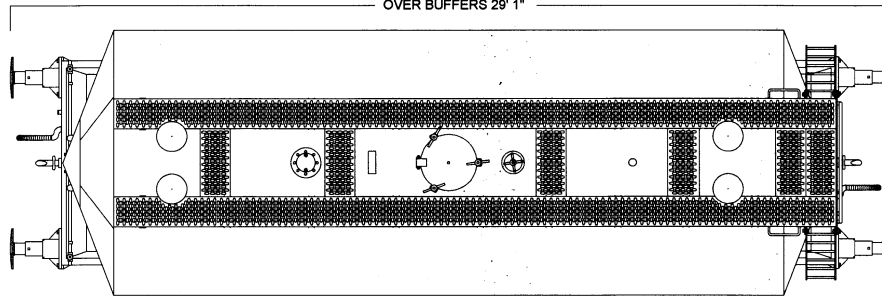
SMBP 62100 - 199



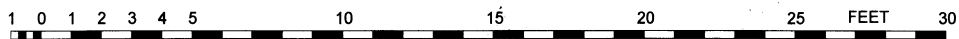
© COLIN CRAIG 2020



WHEELBASE 15'  
OVER HEADSTOCKS 25' 8"  
OVER BUFFERS 29' 1"



Scale 4mm to 1 foot



Drawing created in CAD by Colin Craig, based on the BR weight diagram dimensions, and web posted photographs.

**Notes:**

Built by Metropolitan Cammell in 1965, for Shell Mex BP  
Vacuum braked with AFI (Accelerated Freight Inshot)  
Gresham and Cravens Empty / Loaded auto changeover  
Buffers 520mm with 406mm dia.head.  
Instanter couplings  
TOPs classification TTF  
Original owners numbers 9365 - 9464, Registered as SMBP 62100 - 62199  
The fleet was all assigned to Shell at the separation of BP and Shell, and renumbered SUKO 62100 - 62199.  
All the wagons were converted to air braking TTA, and later Bruninghaus upgraded.suspension.  
Further renumbering to SUKO 61100 - 61199 occurred at a later date (TT066H, TT066M)