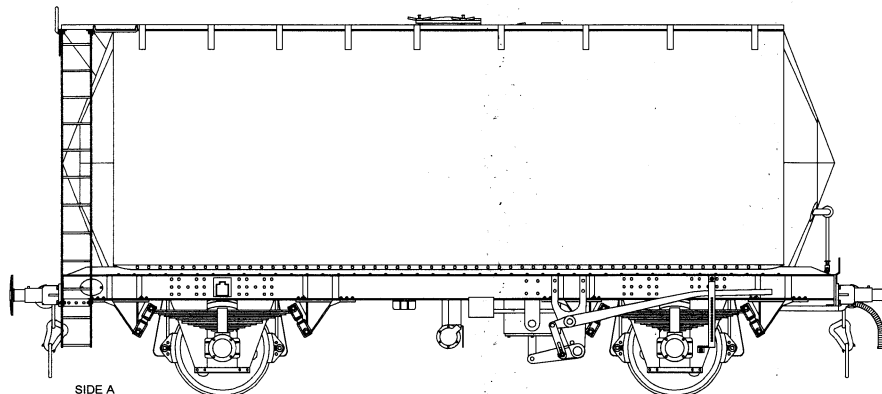


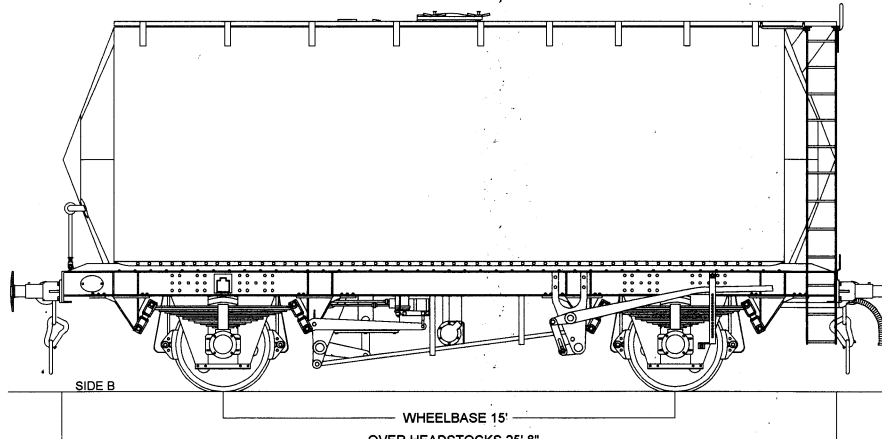
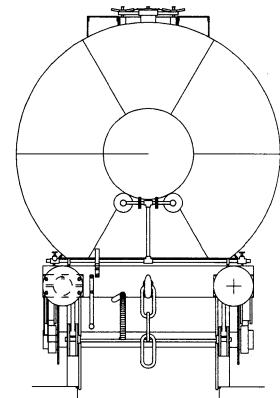
45T Class B Insulated Tank Wagon Design Code TT066D

SMBP 64330 - 618



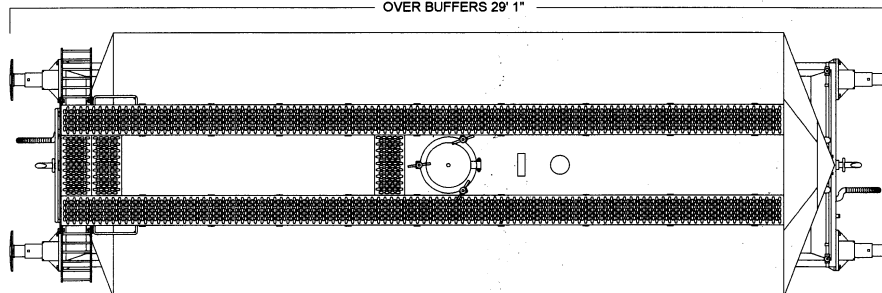
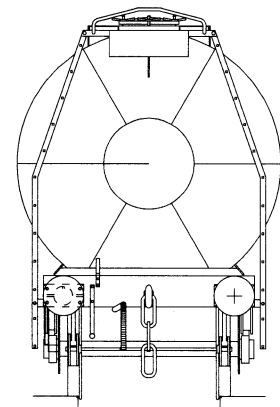
SIDE A

© COLIN CRAIG 2020

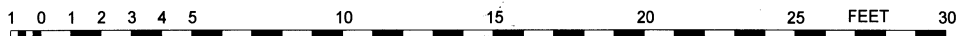


SIDE B

WHEELBASE 15'
OVER HEADSTOCKS 25' 8"
OVER BUFFERS 29' 1"



Scale 4mm to 1 foot



Drawing created in CAD by Colin Craig, based on the BR weight diagram dimensions, and web posted photographs.

Notes:

Built by Metropolitan Cammell in 1964/5, for Shell Mex BP
Vacuum braked with AFI (Accelerated Freight Inshot)
Gresham and Cravens Empty / Loaded auto changeover
Buffers 520mm with 406mm dia.head.

Instanter couplings
TOPs classification TTF

Original owners numbers 6161 - 6450, Registered as SMBP 64330 - 618

The fleet was split with the separation of BP and Shell, and renumbering SUKO 64320 - 359, BPO 64370 - 399,
SUKO 64400 - 459, BPO 64460 - 499, SUKO 64500 - 64541, BPO 64560 - 569, BPO 64660 - 696, BPO 64660 - 696
Some wagons were sold on and re-registered to Esso.

Some wagons were converted to air braking, and Bruninghaus upgraded suspension. (TT066R, TT066T, TT066W)