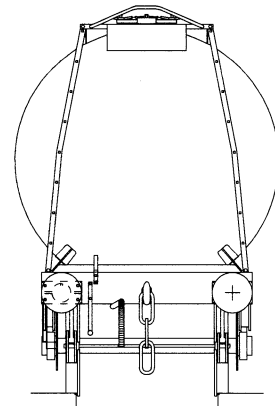
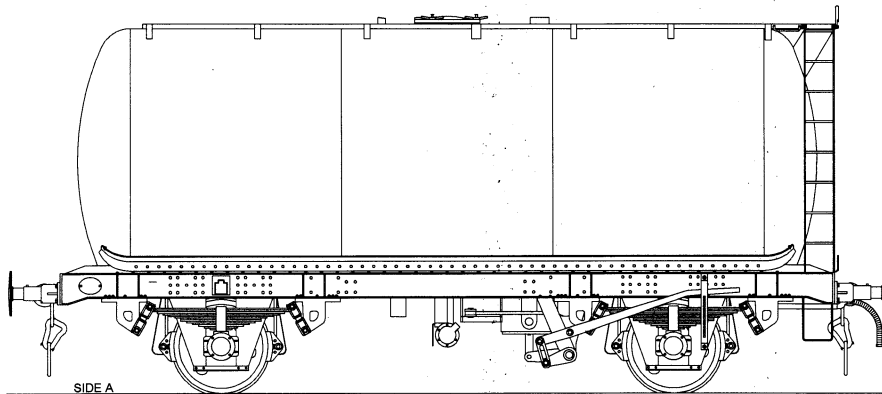
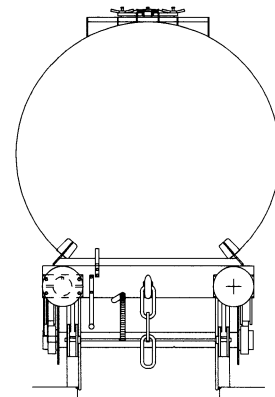
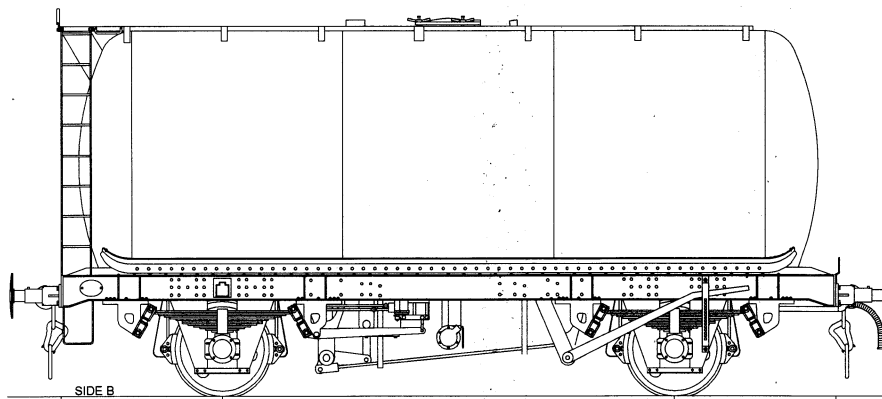


**45T Class B Tank Wagon Design Code TT026H.**

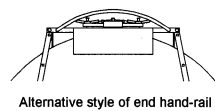
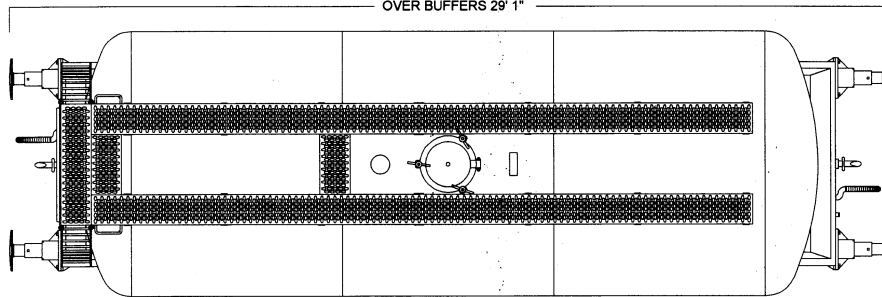
SMBP 66130 - 229



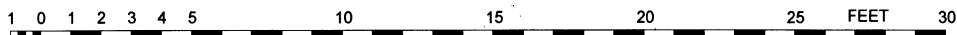
© COLIN CRAIG 2020



WHEELBASE 15'  
OVER HEADSTOCKS 25' 8"  
OVER BUFFERS 29' 1"



Scale 4mm to 1 foot



Drawing created in CAD by Colin Craig, based on the BR weight diagram dimensions, and web posted photographs.

**Notes:**

Built by R Y Pickering in 1965, for Shell Mex BP.  
Vacuum braked with AFI (Accelerated Freight Inshot)  
Gresham and Cravens Empty / Loaded auto changeover  
Buffers 520mm with 406mm dia.head.  
Instanter couplings.  
TOPs classification TTF  
Original owners numbers 3052 - 3151, Registered as SMBP 66130 - 66229  
The fleet was split with the separation of BP and Shell, and renumbered SUKO 66118 - 154, BPO 66172 - 199,  
SUKO 66200 - 222, BPO 66260 - 271.  
Some wagons were sold on and reregistered to Esso.  
Some wagons were converted to air braking, and Bruninghaus upgraded suspension. (TT091W, TT091Y),

Two other designs TT026J, and TT26N (Class A) were visually structurally indistinguishable from TT026H.  
TT026J Original owners numbers 3152 - 3245 (range), registered SMBP 66230 - 66326 (range).  
TT026N Original owners numbers 1333 - 1482 (range), registered SMBP 68500 - 68579