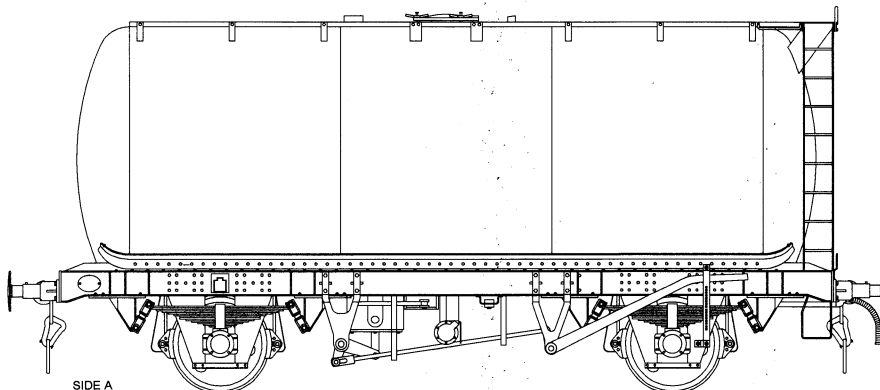
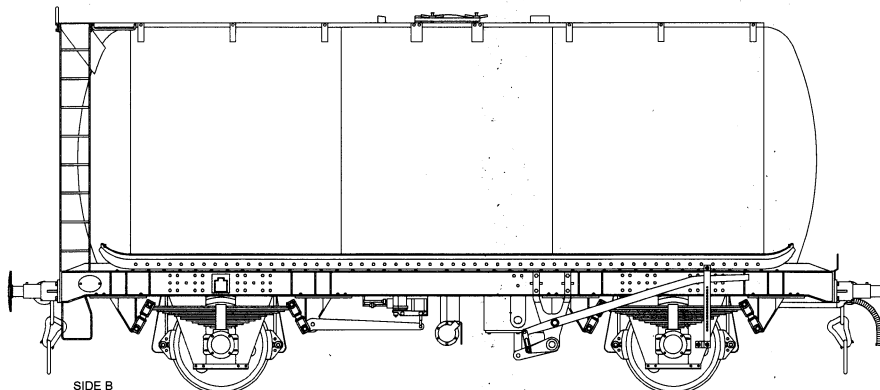
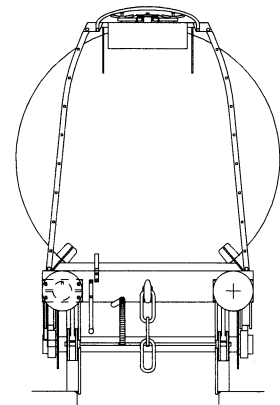


45T Class B Tank Wagon Design Code TT034B

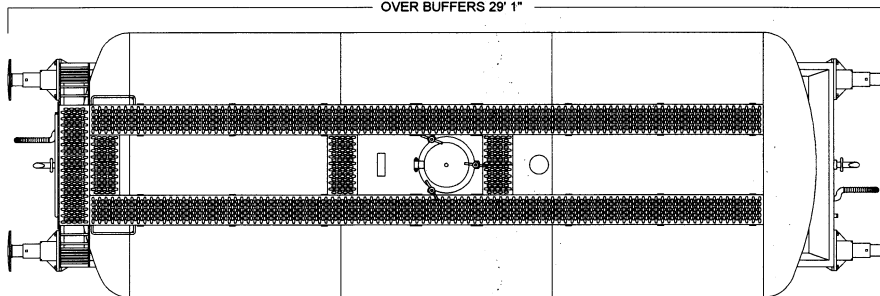
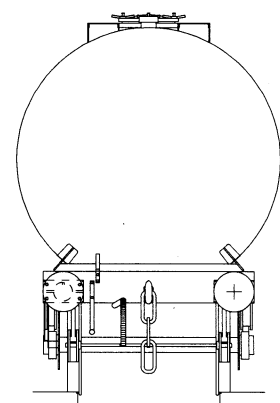
SMBP 66322 - 378



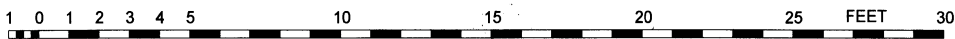
© COLIN CRAIG 2020



WHEELBASE 15'
OVER HEADSTOCKS 25' 8"
OVER BUFFERS 29' 1"



Scale 4mm to 1 foot



Drawing created in CAD by Colin Craig, based on the BR weight diagram dimensions, and web posted photographs.

Notes:

Built by Charles Roberts in 1966, for Shell Mex BP
Vacuum braked with AFI (Accelerated Freight Inshot)
Gresham and Cravens Empty / Loaded auto changeover
Buffers 520mm with 406mm dia.head.
Instanter couplings
TOPs classification TTF
Original owners numbers 3246 - 3301, Registered as SMBP66322 - 66378
The fleet was split with the separation of BP and Shell, and renumbered SUKO 66319 - 351, BPO 66369 - 391.
Some wagons were sold on and re-registered to Esso.
Some wagons were converted to air braking, and Bruninghaus upgraded suspension. (TT034L, TT034M)